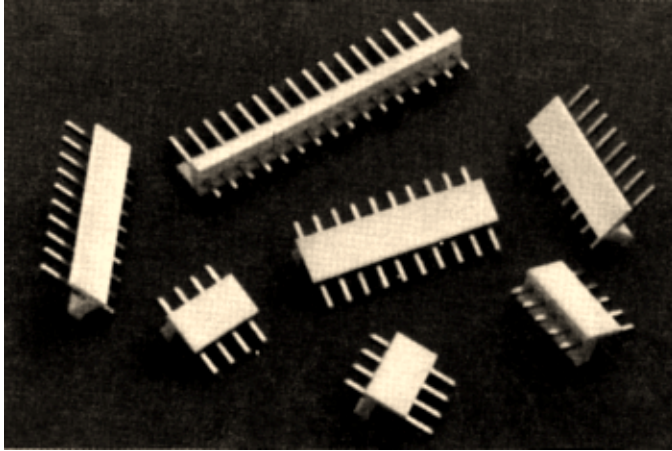


.156" (3.96mm) Single Row Through Hole, Vertical Polarizing Headers



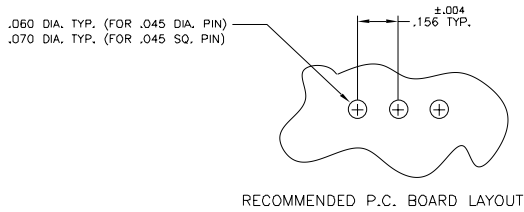
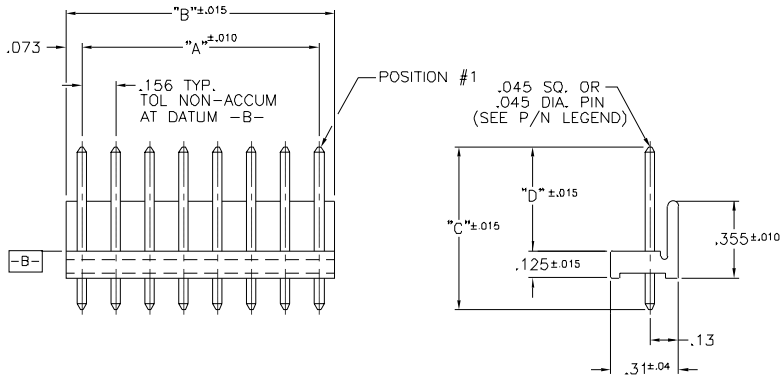
3100 SERIES ("TERMACON")

PART NUMBER LEGEND

310X-11-XXX-XX

- PIN NO: (SEE TABLE II)
- NUMBER OF POSITIONS (SEE TABLE I)
- PIN STYLE: "1" IS .045 SQ., "2" IS .045 RD.
- INSULATOR TYPE
- PIN PLATING (SEE NOTE 3)
- INSULATOR MATERIAL (SEE NOTE 1)

MATING CONNECTORS: 3000 SERIES AND 3300 SERIES CRIMP OR IDC STYLE CONNECTORS



NOTES:

- 1) INSULATOR MATERIAL: 310X - POLYESTER, UL 94V-0, COLOR: WHITE
- 2) PIN MATERIAL: BRASS
- 3) PIN FINISH: 31X0 - BRITE TIN OVER NICKEL PLATE. (-205)
31X2 - .000015 GOLD OVER NICKEL PLATE. (-002)
31XZ - .000030 GOLD OVER NICKEL PLATE. (-007)

PART No.	No. OF POS.	DIM "A"	DIM "B"
310X-11-X02-XX	2	.156	.302
-X03	3	.312	.458
-X04	4	.468	.614
-X05	5	.624	.770
-X06	6	.780	.926
-X07	7	.936	1.082
-X08	8	1.092	1.238
-X09	9	1.248	1.394
-X10	10	1.404	1.550
-X11	11	1.560	1.706
-X12	12	1.716	1.862
-X13	13	1.872	2.018
-X14	14	2.028	2.174
-X15	15	2.184	2.330
-X16	16	2.340	2.486
-X17	17	2.496	2.642
-X18	18	2.652	2.798
-X19	19	2.808	2.954
-X20	20	2.964	3.110
-X21	21	3.120	3.266
-X22	22	3.276	3.422
-X23	23	3.432	3.578
310X-11-X24-XX	24	3.588	3.734

PIN No.	DIM "C"	DIM "D"
-01	.750	.450
-02	.750	.480
-03	.812	.560
-04	.937	.640
-05	.937	.560
-06	1.000	.690
-07	1.187	.890
-08	1.187	.940
-09	1.187	.530
-10	1.250	.450
-11	1.375	1.080
-12	1.375	.620
-13	1.562	.750
-14	1.562	1.280
-15	1.562	.620
-16	1.750	.720
-19	1.290	1.180
-20	1.000	.445

PIN No.	DIM "C"	DIM "D"
-21	.937	.625
-22	.750	.437
-23	1.812	.950
-24	1.750	1.250
-26	.937	.530
-27	1.400	1.085
-28	1.125	.825
-29	1.290	1.055
-30	1.031	.812
-31	1.250	.940
-32	.937	.600
-33	1.250	1.000
-34	.937	.375
-36	1.670	.550
-39	.812	.480
-40	.750	.500
-41	1.200	.450
-42	.812	.530
-43	.660	.425
-46	1.750	1.500

PIN No.	DIM "C"	DIM "D"
-47	1.560	1.310
-48	1.031	.450
-49	2.000	1.750
-51	1.812	1.562
-53	1.125	.450
-54	.750	.390
-56	1.125	.900
-57	1.400	.637
-58	1.250	.715
-60	1.312	1.012
-67	1.000	.760
-72	1.000	.720
-77	1.437	1.137
-79	1.670	1.370
-80	1.150	.850
-81	2.000	1.690