

3rd. Over Tone Quartz Crystal Oscillator

■GENERAL DESCRIPTION

The NJU6377 series is a C-MOS 3rd. over tone quartz crystal oscillator that consists of an oscillation amplifier and 3-state output buffer.

The type number is classified in six versions by their oscillation capacitors mentioned in the line-up table.

The oscillation amplifier is realized very low stand-by current using NAND circuit.

The 3-state output buffer is C-MOS compatible.

■FEATURES

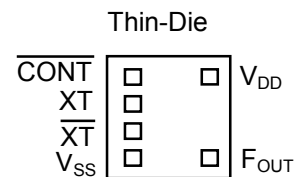
- Operating Voltage 2.2 to 5.5V
- Oscillation Frequency Range (See Line-up Table)
- Low Operating Current
- High Fan-out
 - $I_{OH}/I_{OL}=4mA@2.5V$
 - $I_{OH}/I_{OL}=5mA@3.0V$
 - $I_{OH}/I_{OL}=8mA@5.0V$
- Oscillation Stop and Output Stand-by Function
- 3-State Output Buffer
- Oscillation Capacitors C_g and C_d on-chip
- Package Outline Thin-Die/Wafer
- C-MOS Technology

■PACKAGE OUTLINE



NJU6377XC-X

■PAD LOCATION



■LINE-UP TABLE

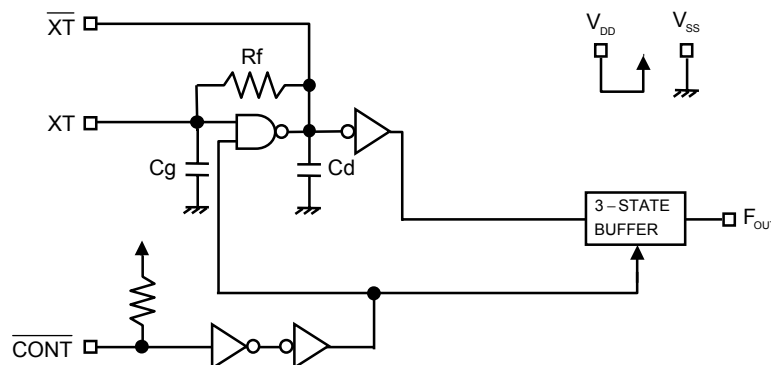
Type No.	Recommended Oscillation Frequency	Output Frequency	Rf	Cg/Cd
NJU6377	E 30 to 40 MHz	f_0	4.5k Ω	18/18pF
	F 40 to 50 MHz		3.1k Ω	16/16pF
	G 50 to 60 MHz		3.9k Ω	11/11pF
	H 60 to 75 MHz		3.1k Ω	10/10pF
	J 45 to 55 MHz		3.9k Ω	14/14pF
	K 40 to 50 MHz		3.9k Ω	14/16pF

■COORDINATES

No	Pad Name	X	Y
1	\overline{CONT}	-178	231
2	XT	-178	77
3	\overline{XT}	-178	-77
4	V_{SS}	-178	-231
5	F_{OUT}	206	-231
8	V_{DD}	206	231

Starting Point: Die Center Unit[μm]
 Die Size: 0.7x0.75mm
 Thin-Die Thickness(C-D): 200 \pm 20 μm
 Thin-Die Thickness(C-L): 140 \pm 10 μm
 Wafer Thickness(W-H): 200 \pm 20 μm
 Wafer Thickness(W-L): 140 \pm 10 μm
 Pad Size: 90x90 μm
 Die Substrate: V_{DD} Level

■BLOCK DIAGRAM



■ TERMINAL DESCRIPTION

SYMBOL	FUNCTION	
$\overline{\text{CONT}}$	Oscillation and 3-state Output Buffer Control	
	$\overline{\text{CONT}}$	F_{OUT}
	H or OPEN	Output frequency f_0 Note1)
	L	Oscillation Stop and High impedance Output
$\overline{\text{XT}}$	Quartz Crystal Connecting Terminals	
V_{SS}	$V_{\text{SS}}=0\text{V}$	
F_{OUT}	Frequency Output	
V_{DD}	$V_{\text{DD}}=2.5\text{V}/3.0\text{V}/5.0\text{V}$	

Note1) Refer to the line-up table.

■ ABSOLUTE MAXIMUM RATINGS

($T_a=25^\circ\text{C}$)

PARAMETER	SYMBOL	RATING	UNIT
Supply Voltage	V_{DD}	-0.5 to +7.0	V
Input Voltage	V_{IN}	$V_{\text{SS}}-0.5$ to $V_{\text{DD}}+0.5$	V
Output Voltage	V_{O}	-0.5 to $V_{\text{DD}}+0.5$	V
Input Current	I_{IN}	± 10	mA
Output Current	I_{O}	± 25	mA
Operating Temperature Range	T_{opr}	-40 to +85	$^\circ\text{C}$
Storage Temperature Range	T_{stg}	-55 to +125	$^\circ\text{C}$

Note2) If the supply voltage(V_{DD}) is less than 7.0V, the input voltage must not over the V_{DD} level though 7.0V is limit specified.

Note3) Decoupling capacitor should be connected between V_{DD} and V_{SS} due to the stabilized operation for the circuit.

■ ELECTRICAL CHARACTERISTICS

(Ta=25°C)

PARAMETER	SYMBOL	CONDITIONS	MIN	TYP	MAX	UNIT
Operating Voltage	V _{DD}		2.2		5.5	V

(V_{DD}=2.5V, Ta=25°C)

PARAMETER	SYMBOL	CONDITIONS	MIN	TYP	MAX	UNIT
Operating Current	I _{DD}	E version, fosc=40MHz, C _L =15pF			6	mA
		F version, fosc=50MHz, C _L =15pF			9	
		G version, fosc=60MHz, C _L =15pF			9	
		H version, fosc=75MHz, C _L =15pF			10	
		J version, fosc=55MHz, C _L =15pF			9	
		K version, fosc=50MHz, C _L =15pF			9	
Oscillation Stopping Current	I _{STB}	$\overline{\text{CONT}} = V_{SS}$, No load		2	5	uA
Stand-by Current	I _{st}	$\overline{\text{CONT}} = \text{XT} = V_{SS}$, No load Note4)			1	uA
Input Voltage	V _{IH}		2.0		2.5	V
	V _{IL}		0		0.5	V
Output Current	I _{OH}	V _{OH} =2.7V	4			mA
	I _{OL}	V _{OL} =0.3V	4			mA
Input Current	I _{IN}	$\overline{\text{CONT}} = 0.8V_{DD}$		7.5	12.0	uA
		$\overline{\text{CONT}} = 0.2V_{DD}$		1.2	2.0	uA
3-state Off Leakage Current	I _{oz}	$\overline{\text{CONT}} = V_{SS}$, F _{OUT} = V _{DD} or V _{SS}			±0.1	uA
Feedback Resistance	R _f	E version		4.5		kΩ
		F version		3.1		
		G version		3.9		
		H version		3.1		
		J version		3.9		
		K version		3.9		
Internal Capacitor	C _g /C _d	E version, fosc=40MHz		18/18		pF
		F version, fosc=50MHz		16/16		
		G version, fosc=60MHz		11/11		
		H version, fosc=75MHz		10/10		
		J version, fosc=55MHz		14/14		
		K version, fosc=50MHz		14/16		
Maximum Oscillation Frequency	F _{MAX}	E version	40			MHz
		F version	50			
		G version	60			
		H version	75			
		J version	55			
		K version	50			
Output Signal Symmetry	SYM	C _L =15pF, @V _{DD} /2	45	50	55	%
Output Signal Rise Time	t _r	C _L =15pF, 10% to 90%		3	6	ns
Output Signal Fall Time	t _f	C _L =15pF, 90% to 10%		3	6	ns
Output Disable time	t _{PLZ}	C _L =15pF, R _{UP} =10kΩ			200	ns
Output Enable Time	t _{PZL}	C _L =15pF, R _{UP} =10kΩ			200	ns

Note4) Excluding input current on $\overline{\text{CONT}}$ Terminal.

(V_{DD}=3.0V, Ta=25°C)

PARAMETER	SYMBOL	CONDITIONS	MIN	TYP	MAX	UNIT
Operating Current	I _{DD}	E version, fosc=40MHz, C _L =15pF			8	mA
		F version, fosc=50MHz, C _L =15pF			10	
		G version, fosc=60MHz, C _L =15pF			11	
		H version, fosc=75MHz, C _L =15pF			12	
		J version, fosc=55MHz, C _L =15pF			11	
		K version, fosc=50MHz, C _L =15pF			11	
Oscillation Stopping Current	I _{STB}	CONT = V _{SS} , No load		2	5	uA
Stand-by Current	I _{st}	CONT = XT = V _{SS} , No load Note4)			1	uA
Input Voltage	V _{IH}		2.1		3.0	V
	V _{IL}		0		0.9	V
Output Current	I _{OH}	V _{OH} =2.7V	5			mA
	I _{OL}	V _{OL} =0.3V	5			mA
Input Current	I _{IN}	CONT = 0.8V _{DD}		10.0	15.0	uA
		CONT = 0.2V _{DD}		1.8	3.0	uA
3-state Off Leakage Current	I _{oz}	CONT = V _{SS} , F _{OUT} = V _{DD} or V _{SS}			±0.1	uA
Feedback Resistance	R _f	E version		4.5		kΩ
		F version		3.1		
		G version		3.9		
		H version		3.1		
		J version		3.9		
		K version		3.9		
Internal Capacitor	C _g /C _d	E version, fosc=40MHz		18/18		pF
		F version, fosc=50MHz		16/16		
		G version, fosc=60MHz		11/11		
		H version, fosc=75MHz		10/10		
		J version, fosc=55MHz		14/14		
		K version, fosc=50MHz		14/16		
Maximum Oscillation Frequency	F _{MAX}	E version	40			MHz
		F version	50			
		G version	60			
		H version	75			
		J version	55			
		K version	50			
Output Signal Symmetry	SYM	C _L =15pF, @V _{DD} /2	45	50	55	%
Output Signal Rise Time	t _r	C _L =15pF, 10% to 90%		2.5	5	ns
Output Signal Fall Time	t _f	C _L =15pF, 90% to 10%		2.5	5	ns
Output Disable time	t _{PLZ}	C _L =15pF, R _{UP} =10kΩ			150	ns
Output Enable Time	t _{PZL}	C _L =15pF, R _{UP} =10kΩ			150	ns

Note4) Excluding input current on CONT Terminal.

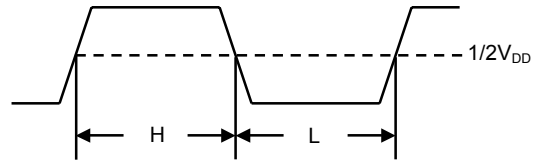
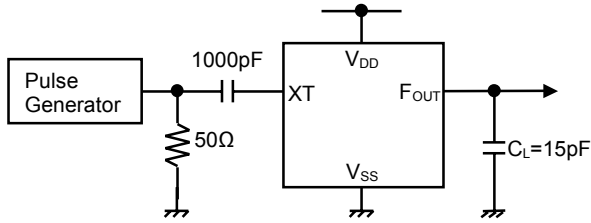
(V_{DD}=5.0V, Ta=25°C)

PARAMETER	SYMBOL	CONDITIONS	MIN	TYP	MAX	UNIT
Operating Current	I _{DD}	E version, fosc=40MHz, C _L =15pF			22	mA
		F version, fosc=50MHz, C _L =15pF			25	
		G version, fosc=60MHz, C _L =15pF			32	
		H version, fosc=75MHz, C _L =15pF			34	
		J version, fosc=55MHz, C _L =15pF			30	
		K version, fosc=50MHz, C _L =15pF			32	
Oscillation Stopping Current	I _{STB}	CONT = V _{SS} , No load		5	10	uA
Stand-by Current	I _{st}	CONT = XT = V _{SS} , No load Note4)			1	uA
Input Voltage	V _{IH}		3.5		5.0	V
	V _{IL}		0		1.5	V
Output Current	I _{OH}	V _{OH} =4.5V	8			mA
	I _{OL}	V _{OL} =0.5V	8			mA
Input Current	I _{IN}	CONT = 0.8V _{DD}		27.0	40.0	uA
		CONT = 0.2V _{DD}		5.5	8.0	uA
3-state Off Leakage Current	I _{oz}	CONT = V _{SS} , F _{OUT} = V _{DD} or V _{SS}			±0.1	uA
Feedback Resistance	R _f	E version		4.5		kΩ
		F version		3.1		
		G version		3.9		
		H version		3.1		
		J version		3.9		
		K version		3.9		
Internal Capacitor	C _g /C _d	E version, fosc=40MHz		18/18		pF
		F version, fosc=50MHz		16/16		
		G version, fosc=60MHz		11/11		
		H version, fosc=75MHz		10/10		
		J version, fosc=55MHz		14/14		
		K version, fosc=50MHz		14/16		
Maximum Oscillation Frequency	F _{MAX}	E version	40			MHz
		F version	50			
		G version	60			
		H version	75			
		J version	55			
		K version	50			
Output Signal Symmetry	SYM	C _L =15pF, @V _{DD} /2	45	50	55	%
Output Signal Rise Time	t _r	C _L =15pF, 10% to 90%		2	4	ns
Output Signal Fall Time	t _f	C _L =15pF, 90% to 10%		2	4	ns
Output Disable time	t _{PLZ}	C _L =15pF, R _{UP} =10kΩ			100	ns
Output Enable Time	t _{PZL}	C _L =15pF, R _{UP} =10kΩ			100	ns

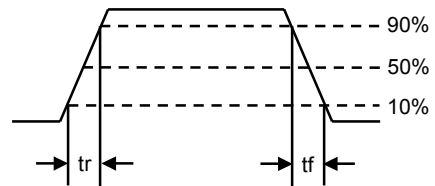
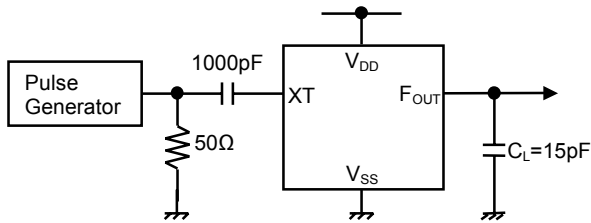
Note4) Excluding input current on CONT Terminal.

MEASUREMENT CIRCUITS

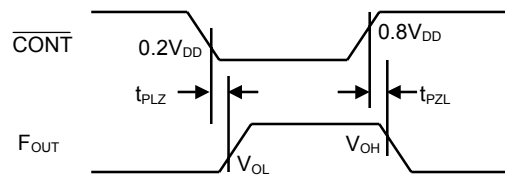
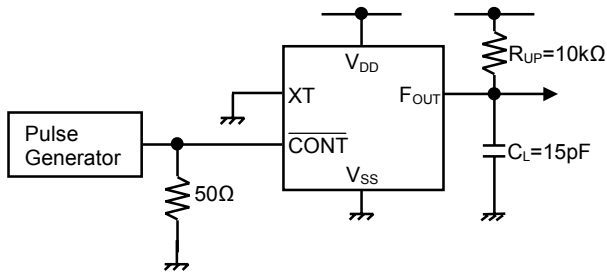
(1) Output Signal Symmetry ($C_L=15\text{pF}$)



(2) Output Signal Rise/Fall Time ($C_L=15\text{pF}$)



(3) Output Disable/Enable Time ($C_L=15\text{pF}, R_{UP}=10\text{k}\Omega$)



[CAUTION]
 The specifications on this data book are only given for information, without any guarantee as regards either mistakes or omissions. The application circuits in this data book are described only to show representative usages of the product and not intended for the guarantee or permission of any right including the industrial rights.