


Have a Question?
 Chat with a Product Information Specialist

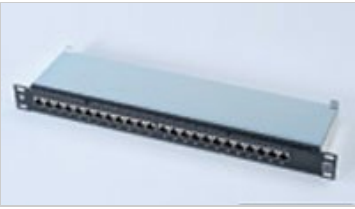




[Home](#) > [Products](#) > [Product Feature Selector](#) > [Product Details](#)

1644042-1 Product Details

[Share](#) [Print](#) [Email](#)



✓ **Active**

AMPTRAC™ System

PA PANEL 24P CAT6 SHLD AMPTRAC

1644042-1

TE Internal Number: 1644042-1

Product Highlights [View All](#)

- Patch Panel
- Copper/Fiber Application = Copper
- 24 Ports
- Performance Category = Cat 6
- Ethernet Speed = 10G Base-T

[Pricing & Availability](#)

[Request Sample](#)

[Add to My Part List](#)

[Buy Product through Distributor](#)

[Documents](#)[Features](#)[Compliance](#)

Product Drawings
PATCH PANEL Cat. 6 24 PORTS SHIELDED WITH AMPTRAC AP... (PDF, English)
Catalog Pages/Data Sheets
Enterprise Networks EMEA Product Catalog (PDF, English)
Product Specifications
Product Specification
SHIELDED AND UNSHIELDED PATCH PANEL. Cat 5E and Cat 6. (PDF, English)
Application Specification
AMP Netconnect Cat.6 Shielded Patch Panel, 24 Ports,... (PDF, English)
Packaging Specification
PATCH PANEL 24 PORTS (PDF, English)

Related Products

Not quite the product you're looking for?
[Find Similar Products](#)

[View Part in Product Feature Selector](#)

[Check for Tooling](#)

[Feedback](#)

Corporate Information

- [About TE](#)
- [Investors](#)
- [News Room](#)
- [Supplier Portal](#)
- [Careers](#)
- [Terms & Conditions](#)
- [Privacy Policy](#)
- [Global Accessibility Statement](#)

Quick Links

- [Distributor Inventory](#)
- [Product Cross Reference](#)
- [Documents & Drawings](#)
- [Product Compliance Support Center](#)
- [Site Map](#)

Customer Support

- [Email or Chat With Us](#)
- [Find a Phone Number](#)
- [Knowledge Base](#)
- [Manage Your Account](#)

Keep Me Informed

