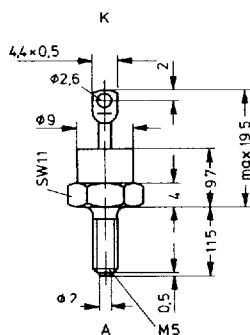


Schraubdioden  
Stud-base diodes  
Diodes à embases filetées

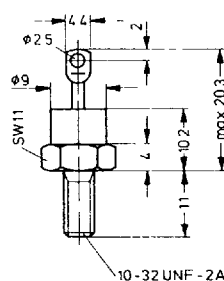
Diodentyp Type of diode Type de diode	V <sub>RRM</sub> V	V <sub>(BR)</sub> V	I <sub>FAVM</sub> A	I <sub>FRMS</sub> A	I <sub>FSM</sub>	∫ i <sup>2</sup> dt	I <sub>R</sub> mA	P <sub>RSM</sub> kW	V <sub>F</sub> /i <sub>F</sub> V/A	V <sub>(TO)</sub> V	r <sub>F</sub> mΩ	T <sub>VJM</sub> °C	R <sub>thJC</sub> K/W	w g	Fig. Nr.
					A	A <sup>2</sup> s									
					T <sub>VJM</sub>										
HD 10/04-2 08 12 14 16	400 800 1200 1400 1600	—	10	16	140	100	2	1,1	1,6/30	0,85	30	180	3	5	6
HDA 10/12-2 14 16	1200 1400 1600	≧1200 ≧1550 ≧1750	10	16	140	100	2	3,4	1,6/30	0,85	30	180	3	5	6
HD 11/04-2 08 12 14 16	400 800 1200 1400 1600	—	11	18	200	200	2	1,4	1,4/36	0,85	15	185	2	5	6
HDA 11/12-2 14 16	1200 1400 1400	≧1200 ≧1550 ≧1750	11	18	200	200	2	4,5	1,4/36	0,85	15	180	2	5	6
HD 25/02-4 + 04 HDI 08 12 14 16	200 400 800 1200 1400 1600	—	25	40	300	450	2	2,25	1,36/55	0,85	8	180	1,5	6	7
HDA 25/12-4 + 14 HDIA 16	1200 1400 1600	≧1200 ≧1550 ≧1750	25	40	300	450	2	7	1,36/55	0,85	8	180	1,5	6	7
HD 33/04-1 08 12 14 16	400 800 1200 1400 1600	—	41	65	420	880	4	3	1,8/120	0,85	8	180	1	15	8

Maße in mm / Dimensions in mm / Dimensions en mm

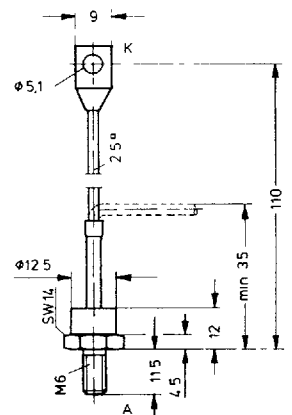
6



7



8

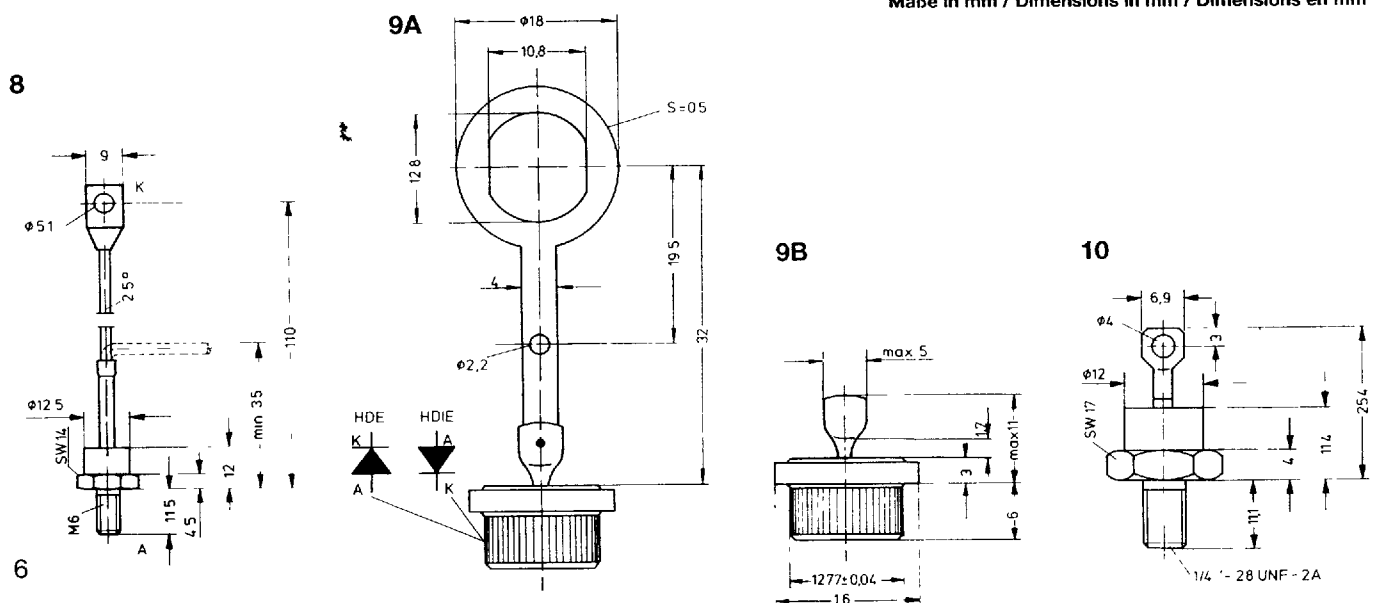


5

**Schraubdioden**  
**Stud-base diodes**  
**Diodes à embases filetées**

Diodentyp Type of diode Type de diode	V <sub>RRM</sub> V	V <sub>(BR)</sub> V	I <sub>FAVM</sub> A	I <sub>FRMS</sub> A	I <sub>FSM</sub> A	i <sup>2</sup> dt A <sup>2</sup> s	I <sub>R</sub> mA	P <sub>RSM</sub> kW	V <sub>F</sub> /i <sub>F</sub> V/A	V <sub>(TO)</sub> V	r <sub>F</sub> mΩ	T <sub>VJM</sub> °C	R <sub>thJC</sub> K/W	w g	Fig.
															Nr.
HDA 33/12-1 14 16	1200 1400 1600	≥1200 ≥1550 ≥1750	41	65	420	880	4	9,5	1,8/120	0,85	8	180	1	15	8
HDE 35/02 + 03 HDIE 04 06 10 12	200 300 400 600 1000 1200	—	35	55	300 280 280 280 280	450 390 390 390 390	6 3 3 4 4	—	1,06/50 1,09/50 1,09/50 1,09/50 1,20/50	0,725 0,735 0,735 0,735 0,700	5,56 6,14 6,14 6,14 9,70	175	0,70 0,70 0,70 0,75 0,75	10	9A/9B
HD 42/02-4 + 04 HDI 08 12 14 16	200 400 800 1200 1400 1600	—	52	80	600	1800	4	3,5	1,55/150	0,85	4,5	180	1,05	15	10
HDA 42/12-4 + 14 HDIA 16	1200 1400 1600	≥1200 ≥1550 ≥1750	52	80	600	1800	4	11	1,55/150	0,85	4,5	180	1,05	15	10
HD 60/04-1 08 12 14 16	400 800 1200 1400 1600	—	65	100	800	3200	6	5,5	1,7/200	0,85	4	180	0,6	33	12
HD 75/02-4 + 04 HDI 08 12 14 16	200 400 800 1200 1400 1600	—	100 80	160 160	1250 1000	7800 5000	2	9	1,15/200 1,4/200	0,75 0,85	2 4	180	0,6	21	11

Maße in mm / Dimensions in mm / Dimensions en mm

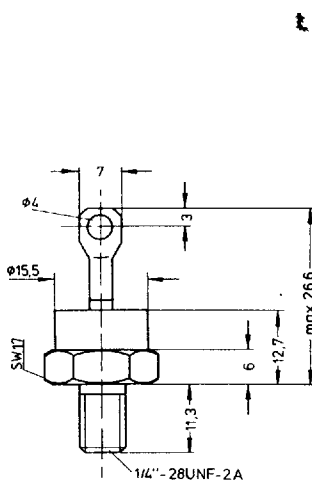


Schraubdioden  
Stud-base diodes  
Diodes à embases filetées

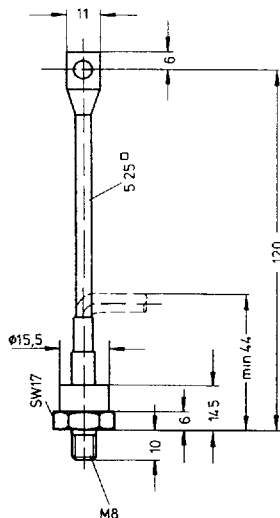
Diodentyp Type of diode Type de diode	V <sub>RRM</sub> V	V <sub>(BR)</sub> V	I <sub>FAVM</sub> A	I <sub>FRMS</sub> A	I <sub>FSM</sub> A	∫ i <sup>2</sup> dt A <sup>2</sup> s	I <sub>R</sub> mA	P <sub>RSM</sub> kW	V <sub>F</sub> /i <sub>F</sub> V/A	V <sub>(TO)</sub> V	r <sub>F</sub> mΩ	T <sub>VJM</sub> °C	R <sub>thJC</sub> K/W	w g	Fig. Nr.
HD 80/04-1 + 08 HDI 12 14 16	400 800 1200 1400 1600	—	110	175	1800	16200	10	10	1,4/350	0,85	1,6	180	0,5	130	13
HDA 80/12-1 + 14 HDIA 16	1200 1400 1600	≧ 1200 ≧ 1550 ≧ 1750	110	175	1800	16200	10	28	1,4/350	0,85	1,6	180	0,5	130	13
HD 95/02-1 04 08 12 14 16	200 400 800 1200 1400 1600	—	95	150	1000	5000	10	—	1,5/200	0,85	3	180	0,55	30	14
HD 110/04-1 + 08 HDI 12 14 16	400 800 1200 1400 1600	—	160	250	2800	39000	10	11	1,4/500	0,85	1,1	180	0,35	130	13
HDA 110/12-1 + 14 HDIA 16	1200 1400 1600	≧ 1200 ≧ 1550 ≧ 1750	160	250	2800	39000	10	35	1,4/500	0,85	1,1	180	0,35	130	13

Maße in mm / Dimensions in mm / Dimensions en mm

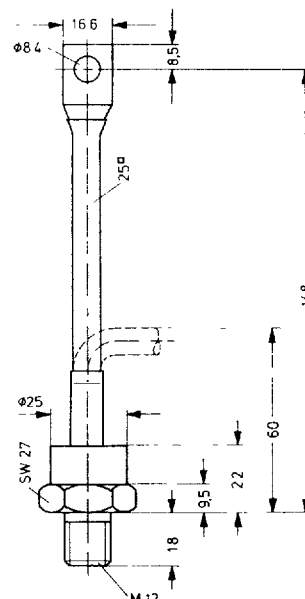
11



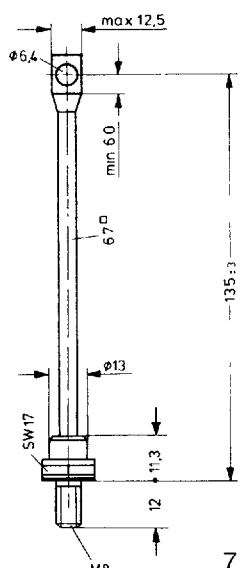
12



13



14

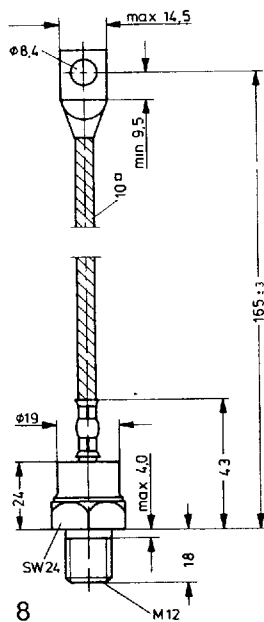


**Schraubdioden**  
**Stud-base diodes**  
**Diodes à embases filetées**

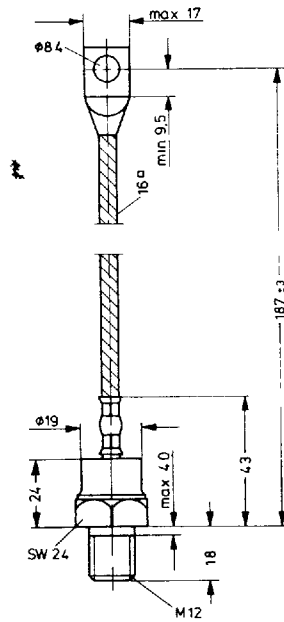
Diodentyp Type of diode Type de diode	V <sub>RRM</sub> V	V <sub>(BR)</sub> V	I <sub>FAVM</sub> A	I <sub>FRMS</sub> A	I <sub>FSM</sub>	∫ i <sup>2</sup> dt	I <sub>R</sub> mA	P <sub>RSM</sub> kW	V <sub>F</sub> /i <sub>F</sub> V/A	V <sub>(TO)</sub> V	r <sub>F</sub> mΩ	T <sub>VJM</sub> °C	R <sub>thJC</sub> K/W	w g	Fig. Nr
					T <sub>VJM</sub>										
HD 125/02-1 + 04 HDI 08 12 14 16	200 400 800 1200 1400 1600	—	125	200	1500	11500	15	—	1,55/400	0,85	1,8	180	0,45	100	15
HD 165/02-1 + 04 HDI 08 12 14 16	200 400 800 1200 1400 1600	—	165	260	2000	20000	22	—	1,50/500	0,85	1,3	180	0,35	100	16
HD 321/04-1 + 08 HDI 12 14 16	400 800 1200 1400 1600	—	320	500	5000	125.000	60	—	1,40/750	0,85	0,6	180	0,20	250	17
HD 420/04-1 + 08 HDI 12 14 16	400 800 1200 1400 1600	—	420	700	8000	300.000	100	—	1,35/1000	0,80	0,45	180	0,16	500	18

Maße in mm / Dimensions in mm / Dimensions en mm

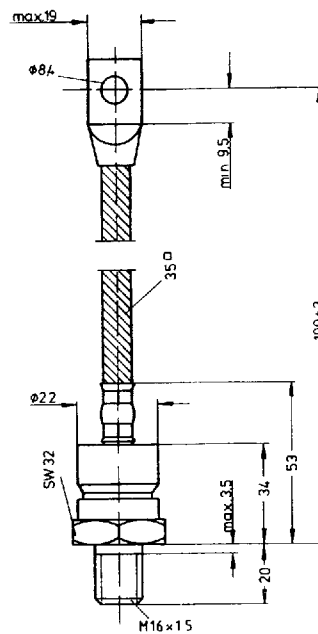
15



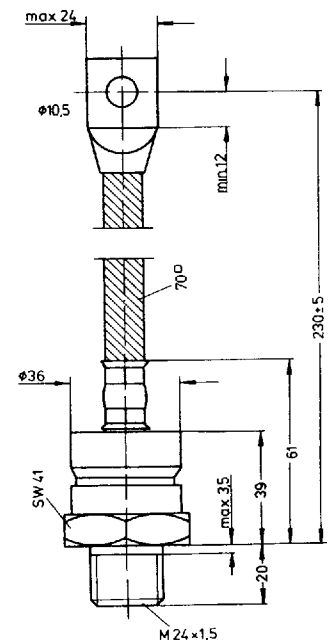
16



17



18



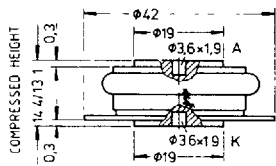
**Scheibendioden**  
**Capsule diodes**  
**Diodes à boîtiers disques**

Diodentyp Type of diode Type de diode	V <sub>RRM</sub> V	V <sub>(BR)</sub> V	I <sub>FAVM</sub> A	I <sub>FRMS</sub> A	I <sub>FSM</sub>	f <sub>i</sub> <sup>2</sup> dt	I <sub>R</sub> mA	P <sub>RSM</sub> kW	V <sub>F</sub> /I <sub>F</sub> V/A	V <sub>(TO)</sub> V	r <sub>F</sub> mΩ	T <sub>VJM</sub> °C	R <sub>thJC</sub> K/W	w g	Fig. Nr.
					A	A <sup>2</sup> s									
					T <sub>VJM</sub>										
HD 480/04-6	400	—	630	1170	6050	183000	15	—	2,09/1517	0,95	0,75	180	0,06	70	22
06	600		③	③									③		
08	800														
12	1200														
14	1400														
15	1500														
HD 620/04-6	400	—	740	1420	8250	340000	15	—	1,86/1930	0,80	0,548	180	0,06	70	22
06	600		③	③									③		
08	800														
12	1200														
14	1400														
15	1500														
HD 1020/36-6	3600	—	1020	2170	10600	559000	30	—	2,4/2420	1,0	0,575	160	0,024	340	23
38	3800		③	③									③		
40	4000														
42	4200														
44	4400														
HD 1140/36-6	3600	—	1140	2560	14300	1,02 · 10 <sup>6</sup>	50	—	2,48/3000	0,975	0,501	160	0,022	510	24
38	3800		③	③									③		
40	4000														
42	4200														
44	4400														
HD 1210/32-6	3200	—	1210	2590	12200	744200	30	—	2,0/2870	0,9	0,388	160	0,024	340	23
34	3400		③	③									③		
36	3600														

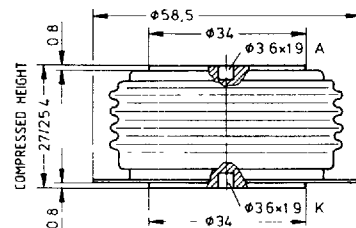
③ doppelsetzige Kühlung / double side cooling / refroidissement sur deux faces

Maße in mm / Dimensions in mm / Dimensions en mm

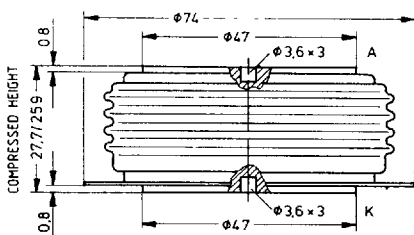
22



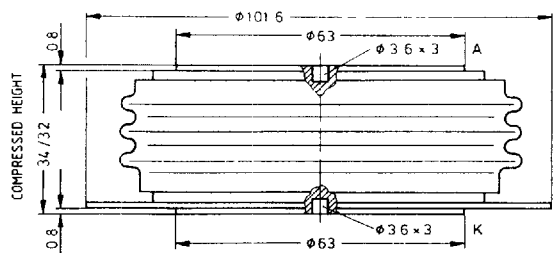
23



24



25



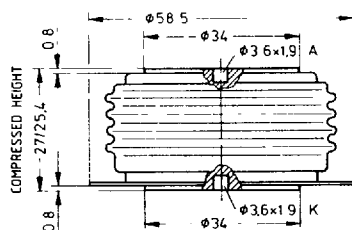
**Scheibendioden**  
**Capsule diodes**  
**Diodes à boîtiers disques**

Diodyentyp Type of diode Type de diode	V <sub>RRM</sub> V	V <sub>(BR)</sub> V	I <sub>FAVM</sub> A	I <sub>FRMS</sub> A	I <sub>FSM</sub>	f <sub>i</sub> <sup>2</sup> dt	I <sub>R</sub> mA	P <sub>RSM</sub> kW	V <sub>F</sub> /i <sub>F</sub> V/A	V <sub>(TO)</sub> V	r <sub>F</sub> mΩ	T <sub>VJM</sub> °C	R <sub>thJC</sub> K/W	w g	Fig.
					A	A <sup>2</sup> s									Nr.
					T <sub>VJM</sub>										
HD 1440/26-6	2600	—	1440	3265	21450	2,3 · 10 <sup>6</sup>	50	—	1,96/3800	0,865	0,288	160	0,022	510	24
28	2800		③	③									③		
30	3000														
32	3200														
34	3400														
36	3600														
HD 1860/04-6	400	—	1860	3730	22400	2,51 · 10 <sup>6</sup>	30	—	1,63/4400	0,79	0,192	175	0,024	340	23
06	600		③	③									③		
08	800														
10	1000														
12	1200														
HD 2400/26-6	2600	—	2400	5750	33000	5,45 · 10 <sup>6</sup>	60	—	1,95/6800	0,875	0,158	160	0,0138	1000	25
28	2800		③	③									③		
30	3000														
32	3200														
34	3400														
36	3600														
HD 2410/04-6	400	—	2400	5080	36300	6,59 · 10 <sup>6</sup>	50	—	1,47/6400	0,73	0,116	175	0,022	510	24
06	600		③	③									③		
08	800														
10	1000														
12	1200														
14	1400														
15	1500														
HD 2670/04-6	400	—	2670	6340	44000	9,68 · 10 <sup>6</sup>	60	—	1,65/6800	0,70	0,14	160	0,0138	1000	25
06	600		③	③									③		
08	800														
12	1200														
14	1400														
16	1600														
18	1800														
20	2000														

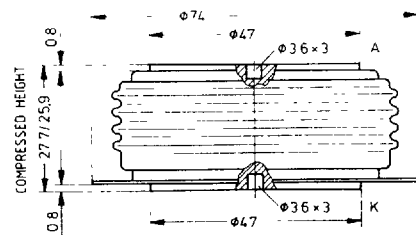
③ doppelseitige Kühlung / double side cooling / refroidissement sur deux faces

Maße in mm / Dimensions in mm / Dimensions en mm

23



24



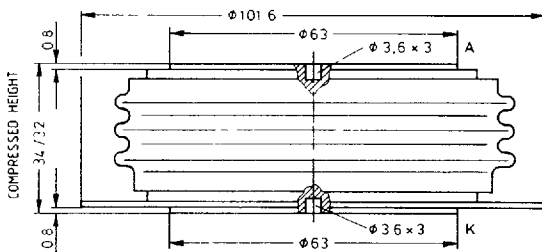
Scheibendioden  
Capsule diodes  
Diodes à boîtiers disques

Diodyentyp Type of diode Type de diode	V <sub>RRM</sub> V	V <sub>(BR)</sub> V	I <sub>FAVM</sub> A	I <sub>FRMS</sub> A	I <sub>FSM</sub> A	∫i <sup>2</sup> dt A <sup>2</sup> s	I <sub>R</sub> mA	P <sub>RSM</sub> kW	V <sub>F</sub> /I <sub>F</sub> V/A	V <sub>(TO)</sub> V	r <sub>F</sub> mΩ	T <sub>VJM</sub> °C	R <sub>thJC</sub> K/W	w g	Fig.
					T <sub>VJM</sub>										Nr.
HD 2930/28-6	2800	—	2930	6870	57000	16,24 · 10 <sup>6</sup>	200	—	2,0/6000	0,976	0,17	160	0,0093	1700	26
30	3000		③	③									③		
32	3200														
34	3400														
36	3600														
38	3800														
40	4000														
42	4200														
HD 3380/20-6	2000	—	3380	7875	60500	18,3 · 10 <sup>6</sup>	100	—	1,6/6000	0,80	0,133	160	0,0093	1700	26
22	2200		③	③									③		
24	2400														
26	2600														
28	2800														
30	3000														

③ doppelseitige Kühlung / double side cooling / refroidissement sur deux faces

Maße in mm / Dimensions in mm / Dimensions en mm

25



26

