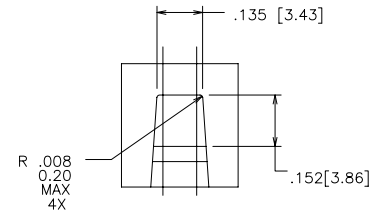
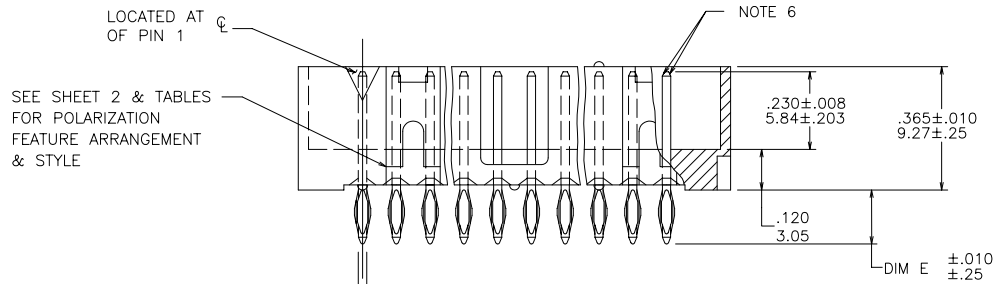
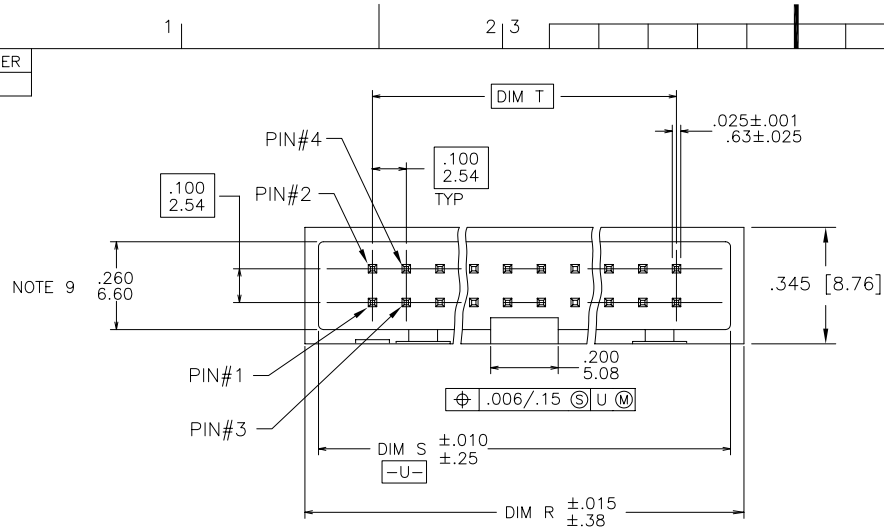
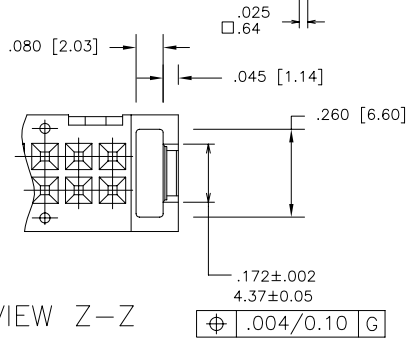


PRODUCT NUMBER
SEE TABLE



WITH END WINDOW
NOTE 10
-5XXX & POCKETS
FOR END LATCHES

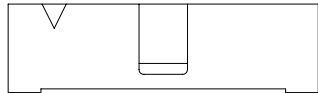


mat'l. code		surface ISO 1302 ✓		tolerance ISO 406 ISO 1101		projection INCH/MM		product family QUICKIE	
ltr	ecn no dr	date		tolerances unless otherwise specified		angles		title	
J	V01358	MEM	6/01/00	.XX±.01/.3		linear		P.F. HDR. ASS'Y.	
K	V01830	MEM	7/19/00	.XXX±.005/.13		.XXXX±.0020/.051		SLIMLINE 4 WALL	
L	V11733	DAI	6/20/01	0°±2'		scale 1:1		dwg no	
M	V20434	RGD	3/05/02	dr	S. ROYER	9/09/97	sheet 1 of 6		size
N	V21540	GIP	9/25/02	enr	L. FYE	9/09/97	73638		A3
P	M05-0089	ERE	5/20/05	chr	L. FYE	9/09/97	type		Product Customer Drawing
R	M07-0116	AGS	2/24/07	appd	L. FYE	9/09/97			
sheet	revision	R	R	R	R	R	R		
index	sheet	1	2	3	4	5	6		

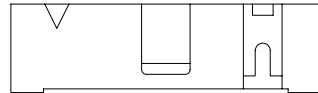
PRODUCT NUMBER
SEE TABLE

NOTES:

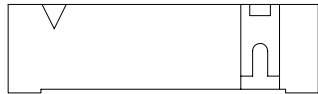
- ① MOLDING MATERIAL: 30% GLASS FILLED POLYESTER
FLAME RETARDANT PER UL94V-0. COLOR-BLUE.
- ② TERMINAL MATERIAL: PHOSPHOR BRONZE.
- ③ REFER TO TA 556 FOR APPLICATION, TOOLING
AND INSTRUCTIONS.
4. UNLESS OTHERWISE SPECIFIED, 1°
PERMISSIBLE ON ALL SURFACES.
5. LOGO LOCATION OPTIONAL.
- ⑥ TWO NON-CRITICAL SIDES OF PIN TIP NOT
PLATED TYP BOTH ENDS.
7. 3 LBS / .36 KG PIN RETENTION IN BOTH
DIRECTIONS. MAX DRAFT
8. RECOMMENDED PLATED-THRU-HOLE DIMENSIONS ARE:
DRILLED HOLE: .0453/1.151±.0010/.025 DIA
COPPER PLATING THICKNESS: .001/.025 TO .003/.076
SOLDER PLATING THICKNESS: .0003/.076 TO .0007/.0178
OVERALL HOLE SIZE: .040/1.016±.003/.076 DIA
- ⑨ ON HEADERS 2 X 20 AND LARGER THE .260/6.6 DIM
HAS A MINIMUM SIZE OF .240/6.1.
- ⑩ DASH -5XX SERIES HAS END WINDOWS & POCKETS
FOR END LATCHES. P/N 68767-002
11. DASH -0XX SERIES; NO END WINDOWS
- ⑫ DASH -2XX SERIES; DUPLEX (GOLD-TIN/LEAD 60/40)
PLATING WITH NO END WINDOWS
LEAD FREE OPTION: DASH -2XX SERIES; DUPLEX (GOLD-TIN)
PLATING WITH NO END WINDOWS
- ⑬ ADD "LF" SUFFIX AT THE END OF PART NUMBER FOR LEAD FREE OPTION.
- ⑭ IF "LF" P/N THE PRODUCT MEETS EUROPEAN UNION DIRECTIVES AND OTHER
COUNTRY REGULATION AS DESCRIBED IN GS-22-008.
- ⑮ THE PRODUCT IS NOT INTENDED TO BE EXPOSED TO A MANUFACTURING
SOLDER PROCESS.
- ⑯ PLATING OPTIONS:
MAY BE EITHER GOLD OR GXT PLATED AT MANUFACTURER'S OPTION.



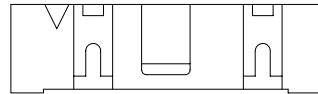
2 X 5
STYLE A



2 X 7
STYLE C



2 X 5
STYLE B



2 X 8 & LARGER
STYLE D



FCIconnect.com

Copyright FCI

mat'l. code		surface ISO 1302 ✓		tolerance ISO 406 ISO 1101		projection ⊕		product family QUICKIE	
ltr	ecn	no	dr	date		tolerances unless otherwise specified		title	
R						angles	linear	P.F. HDR. ASS'Y. SLIMLINE 4 WALL	
						0°±2'	.XX±.01/.3 .XXX±.005/.13 .XXXX±.0020/.051	INCH/MM	
						dr	S. ROYER	9/09/97	scale 1:1
						enr	L. FYE	9/09/97	dwg no
						chr	L. FYE	9/09/97	sheet 2 of 6
						appd	L. FYE	9/09/97	size A3
sheet		revision						type Product Customer Drawing	
index		sheet							

PRODUCT NO NOTE 13	NO. OF POS	DIM R	DIM S	DIM T	DIM E	TERMINAL PLATING NOTE 16	STYLE
73638 -X01	2 X 5	.78/19.81	.72/18.28	.400/10.16	.160/4.06	30u"/.76u Au OVER 50u"/1.27 Ni	A
-X02					.160/4.06	30u"/.76u GXT OVER 50u"/1.27u Ni	
-X03					.610/15.49	30u"/.76u Au OVER 50u"/1.27 Ni	
-X04					.610/15.49	30u"/.76u GXT OVER 50u"/1.27u Ni	
-X05					.733/18.62	30u"/.76u Au OVER 50u"/1.27 Ni	
-X06	2 X 5	.78/19.81	.72/18.28	.400/10.16	.733/18.62	30u"/.76u GXT OVER 50u"/1.27u Ni	A
-X07	2 X 7	.98/24.89	.92/23.37	.600/15.24	.160/4.06	30u"/.76u Au OVER 50u"/1.27 Ni	C
-X08					.160/4.06	30u"/.76u GXT OVER 50u"/1.27u Ni	
-X09					.610/15.49	30u"/.76u Au OVER 50u"/1.27 Ni	
-X10					.610/15.49	30u"/.76u GXT OVER 50u"/1.27u Ni	
-X11					.733/18.62	30u"/.76u Au OVER 50u"/1.27 Ni	
-X12	2 X 7	.98/24.89	.92/23.37	.600/15.24	.733/18.62	30u"/.76u GXT OVER 50u"/1.27u Ni	C
-X13	2 X 8	1.08/27.43	1.02/25.91	.700/17.78	.160/4.06	30u"/.76u Au OVER 50u"/1.27 Ni	D
-X14					.160/4.06	30u"/.76u GXT OVER 50u"/1.27u Ni	
-X15					.610/15.49	30u"/.76u Au OVER 50u"/1.27 Ni	
-X16					.610/15.49	30u"/.76u GXT OVER 50u"/1.27u Ni	
-X17					.733/18.62	30u"/.76u Au OVER 50u"/1.27 Ni	
-X18	2 X 8	1.08/27.43	1.02/25.91	.700/17.78	.733/18.62	30u"/.76u GXT OVER 50u"/1.27u Ni	D
-X19	2 X 10	1.28/35.51	1.22/30.99	.900/22.86	.160/4.06	30u"/.76u Au OVER 50u"/1.27 Ni	D
-X20					.160/4.06	30u"/.76u GXT OVER 50u"/1.27u Ni	
-X21					.610/15.49	30u"/.76u Au OVER 50u"/1.27 Ni	
-X22					.610/15.49	30u"/.76u GXT OVER 50u"/1.27u Ni	
-X23					.733/18.62	30u"/.76u Au OVER 50u"/1.27 Ni	
73638-X24	2 X 10	1.28/35.51	1.22/30.99	.900/22.86	.733/18.62	30u"/.76u GXT OVER 50u"/1.27u Ni	D



Copyright FCI

mat'l. code		surface ISO 1302 <input checked="" type="checkbox"/>		tolerance ISO 406 ISO 1101		projection 		product family QUICKIE	
ltr	ecn	no	dr	date		tolerances unless otherwise specified		title	
R						angles	linear	P.F. HDR. ASS'Y. SLIMLINE 4 WALL	
						0°±2'	.XX±.01/.3 .XXX±.005/.13 .XXXX±.0020/.051	INCH/MM	
						dr	S. ROYER	9/09/97	scale 1:1
						enr	L. FYE	9/09/97	FCJ
						chr	L. FYE	9/09/97	dwg no 73638 sheet 3 of 6 size A3
						appd	L. FYE	9/09/97	type Product Customer Drawing
sheet index	revision sheet								

PRODUCT NO. NOTE 13	NO OF POS	DIM R	DIM S	DIM T	DIM E	TERMINAL PLATING NOTE 16	STYLE
73638-X25	2 X 12	1.48/37.59	1.42/36.07	1.100/27.94	.160/4.06	30u"/.76u Au OVER 50u"/1.27 Ni	D
-X26					.160/4.06	30u"/.76u GXT OVER 50u"/1.27u Ni	
-X27					.610/15.49	30u"/.76u Au OVER 50u"/1.27 Ni	
-X28					.610/15.49	30u"/.76u GXT OVER 50u"/1.27u Ni	
-X29					.733/18.62	30u"/.76u Au OVER 50u"/1.27 Ni	
-X30	2 X 12	1.48/37.59	1.42/36.07	1.100/27.94	.733/18.62	30u"/.76u GXT OVER 50u"/1.27u Ni	D
-X31	2 X 13	1.58/40.13	1.52/38.61	1.200/30.48	.160/4.06	30u"/.76u Au OVER 50u"/1.27 Ni	D
-X32					.160/4.06	30u"/.76u GXT OVER 50u"/1.27u Ni	
-X33					.610/15.49	30u"/.76u Au OVER 50u"/1.27 Ni	
-X34					.610/15.49	30u"/.76u GXT OVER 50u"/1.27u Ni	
-X35					.733/18.62	30u"/.76u Au OVER 50u"/1.27 Ni	
-X36	2 X 13	1.58/40.13	1.52/38.61	1.200/30.48	.733/18.62	30u"/.76u GXT OVER 50u"/1.27u Ni	D
-X37	2 X 15	1.78/45.21	1.72/43.69	1.400/35.56	.160/4.06	30u"/.76u Au OVER 50u"/1.27 Ni	D
-X38					.160/4.06	30u"/.76u GXT OVER 50u"/1.27u Ni	
-X39					.610/15.49	30u"/.76u Au OVER 50u"/1.27 Ni	
-X40					.610/15.49	30u"/.76u GXT OVER 50u"/1.27u Ni	
-X41					.733/18.62	30u"/.76u Au OVER 50u"/1.27 Ni	
-X42	2 X 15	1.78/45.21	1.72/43.69	1.400/35.56	.733/18.62	30u"/.76u GXT OVER 50u"/1.27u Ni	D
-X43	2 X 17	1.98/50.29	1.92/48.77	1.600/40.64	.160/4.06	30u"/.76u Au OVER 50u"/1.27 Ni	D
-X44					.160/4.06	30u"/.76u GXT OVER 50u"/1.27u Ni	
-X45					.610/15.49	30u"/.76u Au OVER 50u"/1.27 Ni	
-X46					.610/15.49	30u"/.76u GXT OVER 50u"/1.27u Ni	
-X47					.733/18.62	30u"/.76u Au OVER 50u"/1.27 Ni	
-X48	2 X 17	1.98/50.29	1.92/48.77	1.600/40.64	.733/18.62	30u"/.76u GXT OVER 50u"/1.27u Ni	
-X49	2 X 20	2.28/57.91	2.22/56.39	1.900/48.26	.160/4.06	30u"/.76u Au OVER 50u"/1.27 Ni	
73638-X50	2 X 20	2.28/57.91	2.22/56.39	1.900/48.26	.160/4.06	30u"/.76u GXT OVER 50u"/1.27u Ni	D



Copyright FCI

mat'l. code		surface ISO 1302 <input checked="" type="checkbox"/>		tolerance ISO 406 ISO 1101		projection 		product family QUICKIE	
ltr	ecn	no	dr	date		tolerances unless otherwise specified		title	
R						angles	linear	P.F. HDR. ASS'Y. SLIMLINE 4 WALL	
						0°±2'	.XX±.01/.3 .XXX±.005/.13 .XXXX±.0020/.051	INCH/MM	
						dr	S. ROYER	9/09/97	scale 1:1
						enr	L. FYE	9/09/97	dwg no
						chr	L. FYE	9/09/97	sheet 4 of 6
						appd	L. FYE	9/09/97	size A3
sheet index		revision sheet						type Product Customer Drawing	



PRODUCT NO NOTE 13	NO OF POS	DIM R	DIM S	DIM T	DIM E	TERMINAL PLATING NOTE 16	STYLE
73638-X51	2 X 20	2.28/57.91	2.22/56.39	1.900/48.26	.610/15.49	30u"/.76u Au OVER 50u"/1.27 Ni	D
-X52					.610/15.49	30u"/.76u GXT OVER 50u"/1.27u Ni	
-X53					.733/18.62	30u"/.76u Au OVER 50u"/1.27 Ni	
-X54	2 X 20	2.28/57.91	2.22/56.39	1.900/48.26	.733/18.62	30u"/.76u GXT OVER 50u"/1.27u Ni	D
-X55	2 X 22	2.48/62.99	2.42/61.47	2.100/53.34	.160/4.06	30u"/.76u Au OVER 50u"/1.27 Ni	D
-X56					.160/4.06	30u"/.76u GXT OVER 50u"/1.27u Ni	
-X57					.610/15.49	30u"/.76u Au OVER 50u"/1.27 Ni	
-X58					.610/15.49	30u"/.76u GXT OVER 50u"/1.27u Ni	
-X59					.733/18.62	30u"/.76u Au OVER 50u"/1.27 Ni	
-X60	2 X 22	2.48/62.99	2.42/61.47	2.100/53.34	.733/18.62	30u"/.76u GXT OVER 50u"/1.27u Ni	D
-X61	2 X 25	2.78/70.61	2.72/69.09	2.400/60.96	.160/4.06	30u"/.76u Au OVER 50u"/1.27 Ni	D
-X62					.160/4.06	30u"/.76u GXT OVER 50u"/1.27u Ni	
-X63					.610/15.49	30u"/.76u Au OVER 50u"/1.27 Ni	
-X64					.610/15.49	30u"/.76u GXT OVER 50u"/1.27u Ni	
-X65					.733/18.62	30u"/.76u Au OVER 50u"/1.27 Ni	
-X66	2 X 25	2.78/70.61	2.72/69.09	2.400/60.96	.733/18.62	30u"/.76u GXT OVER 50u"/1.27u Ni	D
-X67	2 X 30	3.28/83.31	3.22/81.79	2.900/73.66	.160/4.06	30u"/.76u Au OVER 50u"/1.27 Ni	D
-X68					.160/4.06	30u"/.76u GXT OVER 50u"/1.27u Ni	
-X69					.610/15.49	30u"/.76u Au OVER 50u"/1.27 Ni	
-X70					.610/15.49	30u"/.76u GXT OVER 50u"/1.27u Ni	
-X71					.733/18.62	30u"/.76u Au OVER 50u"/1.27 Ni	
-X72	2 X 30	3.28/83.31	3.22/81.79	2.900/73.66	.733/18.62	30u"/.76u GXT OVER 50u"/1.27u Ni	
-X73	2 X 17	1.98/50.29	1.92/48.77	1.600/40.64	.160/4.06	50u"/1.27u Au OVER 50u"/1.27u Ni	D
-X74	2 X 5	.78/19.81	.72/18.29	.400/10.16	.110/2.79	30u"/.76u GXT OVER 50u"/1.27u Ni	A
-X75	2 X 10	1.28/32.51	1.22/30.99	.900/22.86	.110/2.79	30u"/.76u GXT OVER 50u"/1.27u Ni	D
-X76	2 X 12	1.48/37.59	1.42/36.07	1.100/27.94	.110/2.79	30u"/.76u GXT OVER 50u"/1.27u Ni	D
-X77	2 X 20	2.28/57.91	2.22/56.39	1.900/48.26	.160/4.06	30u"/.76u Au OVER 50u"/1.27 Ni	D
-X78	2 X 5	.78/19.81	.72/18.29	.400/10.16	.110/2.79	30u"/.76u Au OVER 50u"/1.27 Ni	A
-201	2 X 5	.78/19.81	.72/18.29	.400/10.16	.160/4.06	30u"/.76u GOLD DUPLEX	A
73638-207	2 X 7	.98/24.89	.92/23.37	.600/15.24	.160/4.06	30u"/.76u GOLD DUPLEX	C

OMIT PIN 20

NOTE 12

NOTE 12



Copyright FCI

mat'l. code		surface ISO 1302 <input checked="" type="checkbox"/>		tolerance ISO 406 ISO 1101		projection 		product family QUICKIE	
ltr		ecn no dr		date		tolerances unless otherwise specified		title	
R						.XX±.01/.3		P.F. HDR. ASS'Y.	
						linear .XXX±.005/.13		SLIMLINE 4 WALL	
						.XXXX±.0020/.051		scale 1:1	
						dr S. ROYER 9/09/97		dwg no	
						enr L. FYE 9/09/97		sheet 5 of 6 size	
						chr L. FYE 9/09/97		73638 A3	
						appd L. FYE 9/09/97		type Product Customer Drawing	
sheet index		revision sheet							

PRODUCT NO NOTE 13	NO OF POS	DIM R	DIM S	DIM T	DIM E	TERMINAL PLATING	STYLE
73638-210	2 X 5	.78/19.81	.72/18.29	.400/10.16	.255/6.48	30u"/.76u GOLD DUPLEX	A
-219	2 X 10	1.28/32.51	1.22/30.99	.900/22.86	.160/4.06	30u"/.76u GOLD DUPLEX	D
-220	2 X 10	1.28/32.51	1.22/30.99	.900/22.86	.255/6.48	30u"/.76u GOLD DUPLEX	D
-225	2 X 12	1.48/39.59	1.42/36.07	1.100/27.94	.160/4.06	30u"/.76u GOLD DUPLEX	D
-237	2 X 15	1.78/45.21	1.72/43.69	1.400/35.56	.160/4.06	30u"/.76u GOLD DUPLEX	D
73638-261	2 X 25	2.78/70.61	2.72/69.09	2.400/60.91	.160/4.06	30u"/.76u GOLD DUPLEX	D

NOTE 12
NOTE 12
NOTE 12
NOTE 12
NOTE 12
NOTE 12



Copyright FCI

mat'l. code		surface ISO 1302 <input checked="" type="checkbox"/>		tolerance ISO 406 ISO 1101		projection 		product family QUICKIE	
ltr	ecn	no	dr	date		tolerances unless otherwise specified		title	
R						angles	linear	INCH/MM	
						0°±2'	.XX±.01/.3	P.F. HDR. ASS'Y.	
							.XXX±.005/.13	SLIMLINE 4 WALL	
							.XXX±.0020/.051	scale 1:1	
			dr	S. ROYER	9/09/97			dwg no	
			enr	L. FYE	9/09/97			sheet 6 of 6	
			chr	L. FYE	9/09/97			size	
			appd	L. FYE	9/09/97			A3	
sheet index		revision sheet						type Product Customer Drawing	

form: A3