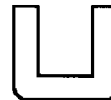
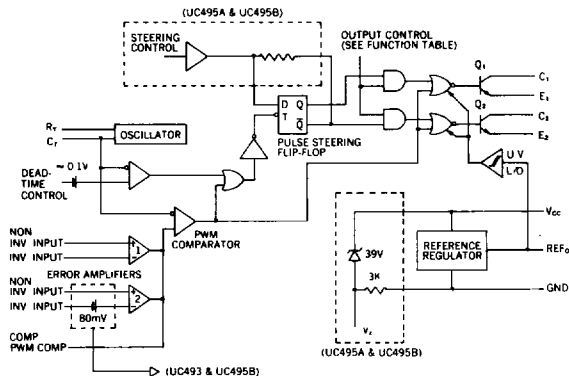


Switching Regulators (PWM) Voltage Mode



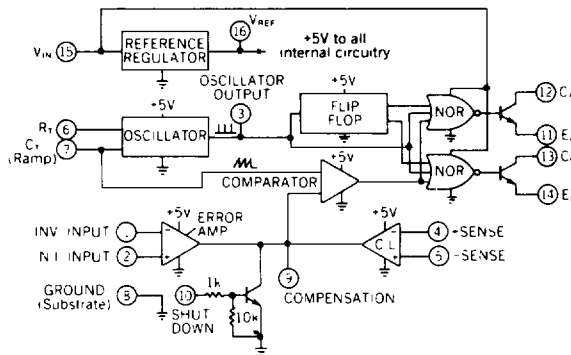
UC493A/UC494A/UC495A UC493AC/UC494AC/UC495AC

- Dual uncommitted 40V, 200mA output transistors
- 1% accurate 5V reference
- Dual error amplifiers
- Wide range, variable deadtime
- Single-ended or push-pull operation
- Under-voltage lockout with hysteresis
- Double pulse protection
- Master or slave oscillator operation
- UC493A/UC495B: Built in 80mV threshold for current limiting
- UC495A/UC495B: Internal 39V zener diode
- UC495A/UC495B: Buffered steering control
- UC493A/AC, UC494A/AC: 16-pin dual-in-line package
- UC495A/AC, UC495B/BC: 18-pin dual-in-line package



UC1524/UC2524/UC3524

- Complete PWM power control circuitry
- Uncommitted outputs for single-ended or push-pull applications 100mA
- Output voltage 40V
- Supply voltage, V_{CC} 8V to 40V
- Low standby current 8mA typical
- Reference voltage, V_{REF} 5V \pm 4%
- Sawtooth oscillator operation to 300KHz
- Analog external shutdown
- Analog current limiting
- 16-pin dual-in-line package



12

UC1524A/UC2524A/UC3524A

- Fully interchangeable with standard UC1524 family
- Precision reference internally trimmed to \pm 1%
- High-performance current limit function
- Under-voltage lockout with hysteretic turn-on
- Start-up supply current less than 4mA
- Output current to 200mA
- 60V output capability
- Wide common-mode input range for both error and current limit amplifiers
- PWM latch insures single pulse per period
- Double pulse suppression logic
- 200ns shutdown through PWM latch
- Guaranteed frequency accuracy
- Thermal shutdown protection
- 16-pin dual-in-line package

