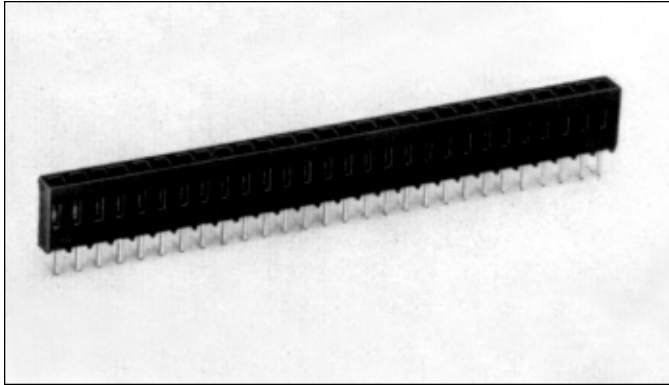


.100" (2.54mm) Single Row Through Hole Vertical Connector



9000 SERIES "POST/BOXE"

PART NUMBER LEGEND

900X-1XX-30X

TAIL CONFIGURATION

- 1=STRAIGHT TAILS
- 3=OFFSET TAILS

NUMBER OF POSITIONS PER ROW

- 2- 65

CONTACT FINISH

- 0= TIN
- 8= .000030 SELECTIVE GOLD
- F= .000015 SELECTIVE GOLD

MATING HEADERS: 9100 SERIES

NOTES:

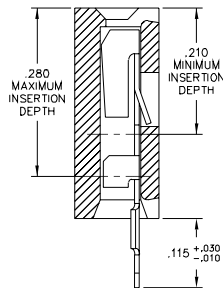
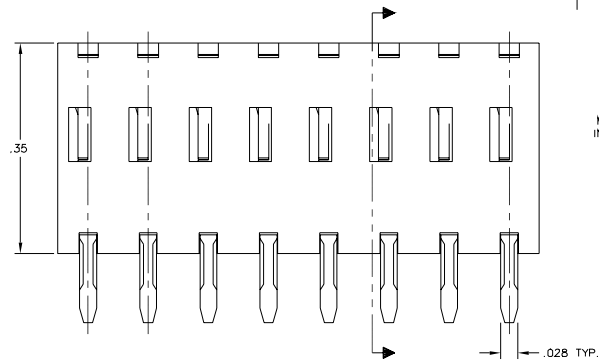
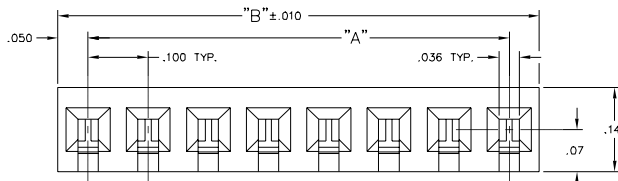
MATERIALS:

INSULATOR: PART NUMBERS 9000-101-301 THRU 9000-125-301 ARE POLYESTER (PET), 30% GLASS FILLED, UL 94-V0, COLOR IS BLACK; PART NUMBERS 9000-126-301 THRU 9000-165-301 ARE POLYESTER (PBT), 30% GLASS FILLED, UL 94-V0, COLOR IS BLACK;

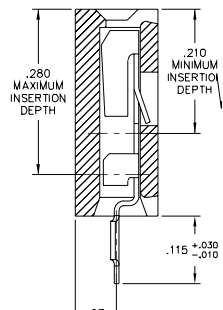
CONTACTS: PHOSPHOR BRONZE.

CONTACT FINISH:

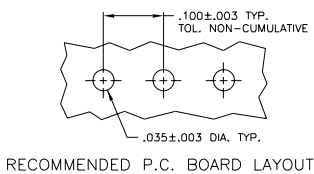
- 9000 - TIN/LEAD OVER NICKEL PLATE;
- 9008 - SELECT GOLD (.000030) IN CONTACT AREA AND SELECT TIN/LEAD (.0002/.0003) ON SOLDER TAILS WITH NICKEL UNDERPLATE OVERALL;
- 900E - SELECT GOLD (.000015) IN CONTACT AREA AND SELECT TIN/LEAD (.0002/.0003) ON SOLDER TAILS WITH NICKEL UNDERPLATE OVERALL.



-301 STRAIGHT TAILS



-303 OFFSET TAILS



ADDITIONAL SPECIFICATIONS

PART NUMBER	No. OF CKTS.	DIM "A"	DIM "B"
900X-101-30X	1	---	.100
-102-	2	.100	.200
-103-	3	.200	.300
-104-	4	.300	.400
-105-	5	.400	.500
-106-	6	.500	.600
-107-	7	.600	.700
-108-	8	.700	.800
-109-	9	.800	.900
-110-	10	.900	1.000
-111-	11	1.000	1.100
-112-	12	1.100	1.200
-113-	13	1.200	1.300
-114-	14	1.300	1.400
-115-	15	1.400	1.500
-116-	16	1.500	1.600
-117-	17	1.600	1.700
-118-	18	1.700	1.800
-119-	19	1.800	1.900
-120-	20	1.900	2.000
-121-	21	2.000	2.100
-122-	22	2.100	2.200
-123-	23	2.200	2.300
-124-	24	2.300	2.400
-125-	25	2.400	2.500
-126-	26	2.500	2.600
-127-	27	2.600	2.700
-128-	28	2.700	2.800
-129-	29	2.800	2.900
-130-	30	2.900	3.000
-131-	31	3.000	3.100
-132-	32	3.100	3.200
900X-133-30X	33	3.200	3.300

PART NUMBER	No. OF CKTS.	DIM "A"	DIM "B"
900X-134-30X	34	3.300	3.400
-135-	35	3.400	3.500
-136-	36	3.500	3.600
-137-	37	3.600	3.700
-138-	38	3.700	3.800
-139-	39	3.800	3.900
-140-	40	3.900	4.000
-141-	41	4.000	4.100
-142-	42	4.100	4.200
-143-	43	4.200	4.300
-144-	44	4.300	4.400
-145-	45	4.400	4.500
-146-	46	4.500	4.600
-147-	47	4.600	4.700
-148-	48	4.700	4.800
-149-	49	4.800	4.900
-150-	50	4.900	5.000
-151-	51	5.000	5.100
-152-	52	5.100	5.200
-153-	53	5.200	5.300
-154-	54	5.300	5.400
-155-	55	5.400	5.500
-156-	56	5.500	5.600
-157-	57	5.600	5.700
-158-	58	5.700	5.800
-159-	59	5.800	5.900
-160-	60	5.900	6.000
-161-	61	6.000	6.100
-162-	62	6.100	6.200
-163-	63	6.200	6.300
-164-	64	6.300	6.400
900X-165-30X	65	6.400	6.500