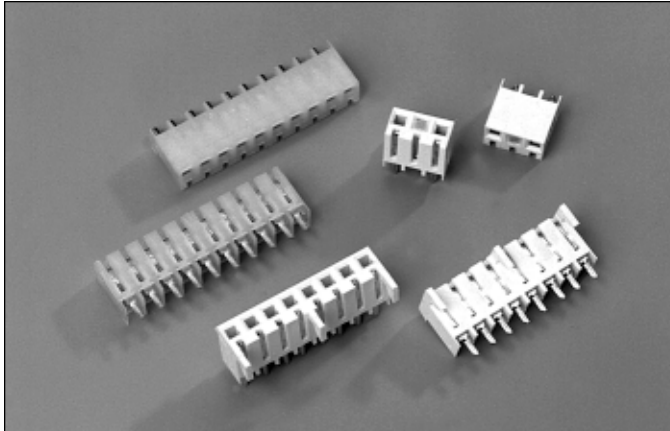


# .156" (3.96mm) Through Hole Vertical Mount Connector



## 3000 SERIES "TERMACON"

### PART NUMBER LEGEND

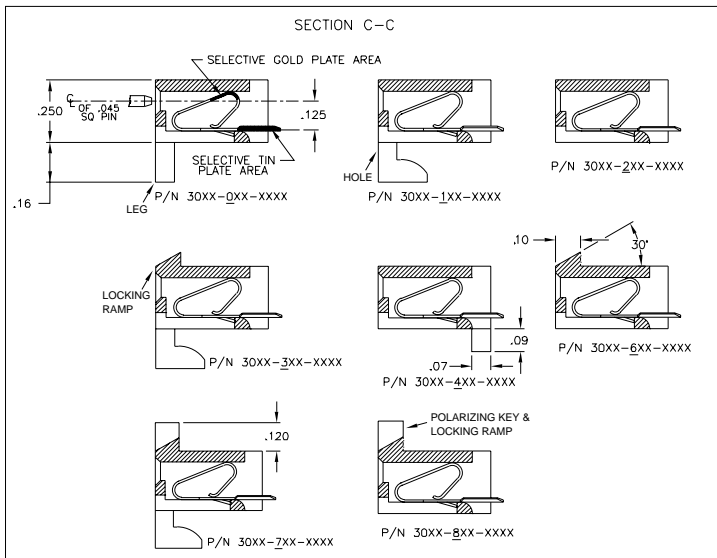
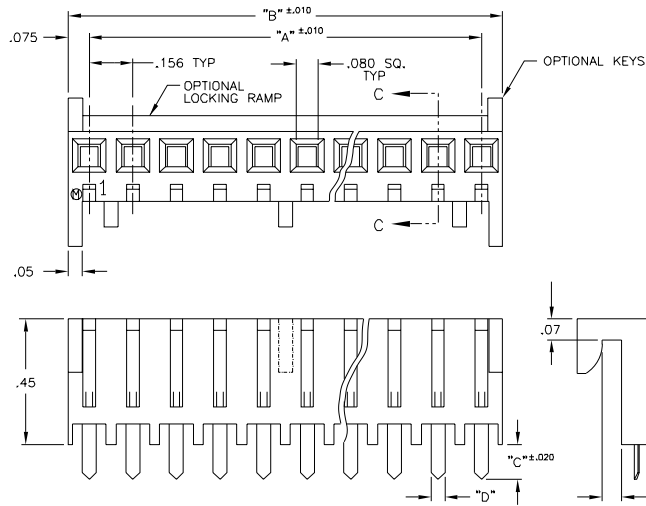
#### 30XX-XXX-XXXX

- CONTACT TAIL DIMS (SEE TABLE 2)
- CONTACT MATERIAL (SEE NOTE 1)
- OPTIONS
  - 2 - HIGH INSERTION FORCE CONTACT
  - 3 - LOW INSERTION FORCE CONTACT
- NO. OF POSITONS (SEE TABLE 1)
- OPTIONS
  - 0 - WITH LEGS
  - 1 - WITH HOOKS
  - 3 - WITH HOOKS AND LOCKING RAMP
  - 6 - WITH LOCKING RAMP
  - 7 - WITH HOOKS, LOCKING RAMP AND POLARIZING KEY
  - 8 - WITHOUT HOOKS, W/ LOCKING RAMP AND POLARIZING KEY
- CONTACT FINISH (SEE NOTE 2)
- INSULATOR MATERIAL (SEE NOTE 1)

### MATING HEADERS: 3100 SERIES

#### NOTES:

- 1) INSULATOR MATERIAL - 300X-XXX-XXXX: NYLON 6/6, UL 94V-2  
COLOR: NATURAL  
306X-XXX-XXXX: NYLON 6/6, UL 94V-0  
COLOR: NATURAL  
307X-XXX-XXXX: POLYESTER - PBT 15% G.R. UL 94V-0  
COLOR: NATURAL  
309X-XXX-XXXX: POLYESTER - PCT 30% G.R. UL 94V-0  
COLOR: BLACK  
CONTACT MATERIAL - 30XX-XXX-X0XX: PHOSPHOR BRONZE  
30XX-XXX-X1XX: 70/30 BRASS
- 2) CONTACT FINISH:  
30X0 - .0001/.0002 BRITE TIN OVER .0001 MIN COPPER PLATE (206)  
30XE - TIN/LEAD OVER NICKEL PLATE (405)  
30X2 - .000015 GOLD PLATE OVER .000050 NICKEL PLATE (002)  
30XB - .000020 MIN SELECTIVE GOLD PLATE OVER .000050 NICKEL PLATE ALL OVER; .0002 SELECTIVE TIN PLATE AS INDICATED (802)  
30XE - .000030 SELECTIVE GOLD PLATE OVER .000050 NICKEL PLATE ALL OVER; .0002 SELECTIVE TIN PLATE AS INDICATED (817)



PART NO.	DIM "C"	DIM "D"
30XX-XXX-XX01	.125	.050
30XX-XXX-XX02	.165 +/- .02	.050
30XX-XXX-XX06	.125	.033
30XX-XXX-XX07	.165 +/- .02	.033

PART NO.	NO. OF POS	DIM "A"	DIM "B"
30XX-X02-XXXX	2	.156	.306
-X03-	3	.312	.462
-X04-	4	.468	.618
-X05-	5	.624	.774
-X06-	6	.780	.930
-X07-	7	.936	1.086
-X08-	8	1.092	1.242
-X09-	9	1.248	1.398
-X10-	10	1.404	1.554
-X11-	11	1.560	1.710
-X12-	12	1.716	1.866
-X13-	13	1.872	2.022
-X14-	14	2.028	2.178
30XX-X15-XXXX	15	2.184	2.334

**ADDITIONAL SPECIFICATIONS**

