

# D-SUB ~ IDC

## Flat Cable Connector

# DNF SERIES

### MATERIAL

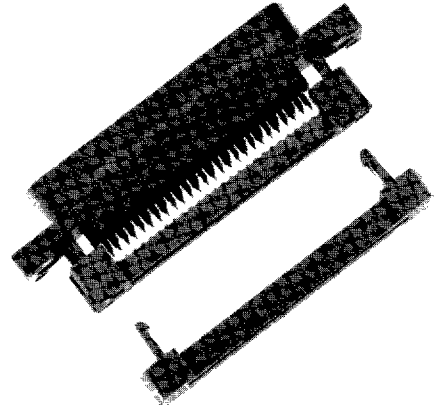
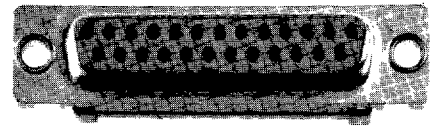
Insulator: PBT (UL 94V-0)  
 Contact: Copper Alloy  
 Contact Plating: Gold Over Nickel (see "Plating" below)  
 Shell: Thermoplastic or Tin Over Steel

### SPECIFICATIONS

Current Rating: 1A  
 Insulator Resistance: 1000 M $\Omega$  Min at DC 500V  
 Contact Resistance: 20 m $\Omega$  Max at 6V DC 0.3A  
 Voltage Rating: 500V AC for one minute  
 Operating Temperature: -55°C - +105°C  
 Cable Size: 1.27mm (0.05")  
 Spacing AWG #28 or #30

### FEATURES

- ♦ D-Subs for mass termination connections to flat cable AWG 28 without wire stripping
- ♦ Compatible with all other D-Sub connectors
- ♦ Connect to single connectors or use as jumpers
- ♦ Connectors have high pull-out resistance
- ♦ Conform to MIL-C-24308
- ♦ The position transmission from connector to cable occurs inside of the housing (1.376 to 1.27mm)
- ♦ Strain relief included
- ♦ Threaded inserts available for metal shell version (see "Hardware Option" below)
- ♦ **Mating Series:** DN, DNS, DNP, DNC, DNR, DNRI, DNRL, DNDD, DNF



## HOW TO ORDER:

1     2 -  3     4     5     6 - **SG**    7

1. **SERIES**  
 DNF = D-Sub, IDC (Flat Cable Connector)

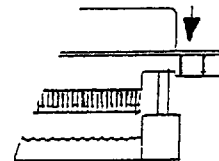
2. **SHELL**  
 P = All Plastic  
 M = Metal

3. **POSITION**  
 09 = 9 Position  
 15 = 15 Position  
 25 = 25 Position  
 37 = 37 Position  
 50 = 50 Position (Female Only)

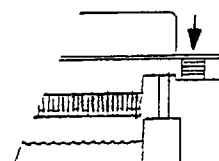
4. **GENDER**  
 P = Plug (Male)  
 S = Socket (Female)

5. **INSULATOR COLOR**  
 BL = Blue (Standard)  
 BK = Black  
 GR = Gray

6. **HARDWARE OPTION**  
 SH = 3.05mm Standard Mounting Holes



TI = Threaded Insert (Metal Shell Only)



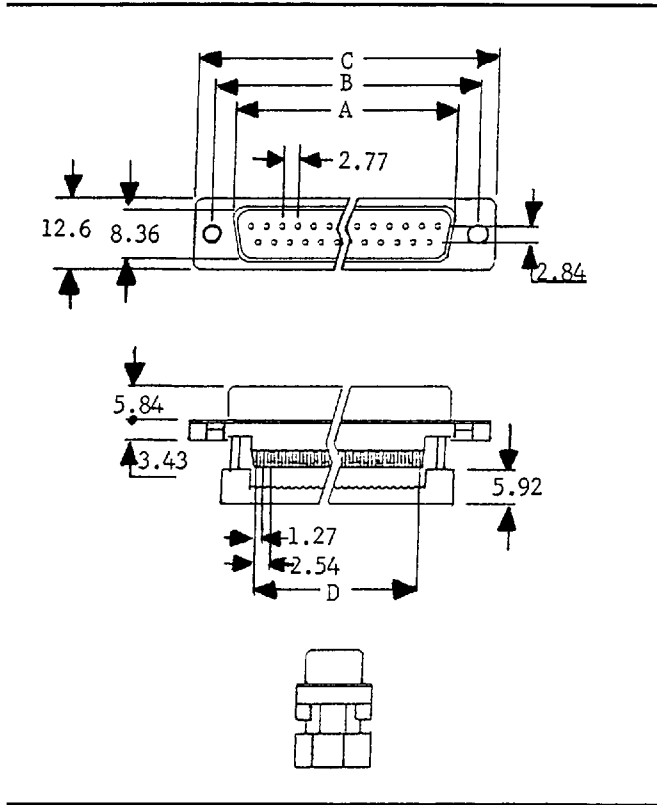
7. **PLATING**  
 SG = Selective Gold Flash

**D-SUB ~ IDC**  
**Flat Cable Connector**

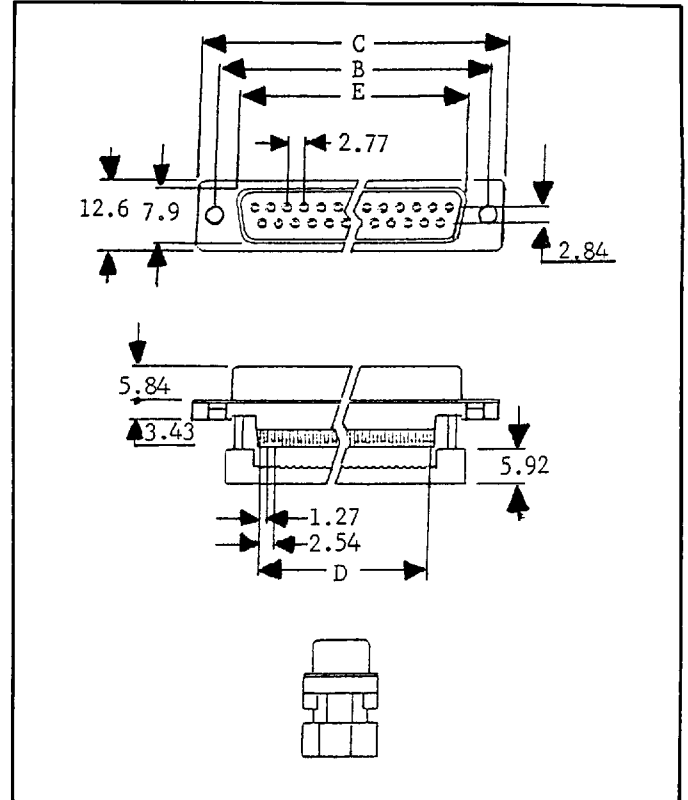
**DNF SERIES**

**SPECIFICATIONS:**

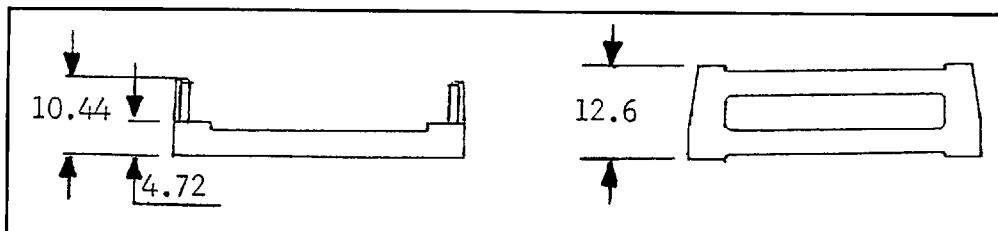
**MALE**



**FEMALE**



**STRAIN RELIEF**



**DIMENSIONS:**

POSITION	A	B	C	D	E
9	16.92	25.00	30.80	10.16	16.30
15	25.25	33.32	39.10	17.78	24.50
25	38.96	47.04	53.10	30.48	38.30
37	55.45	63.50	69.50	45.72	54.80

**ENGINEERS:** For detailed Data Sheets, including *tolerances*, see pages 157 & 159 or call us!