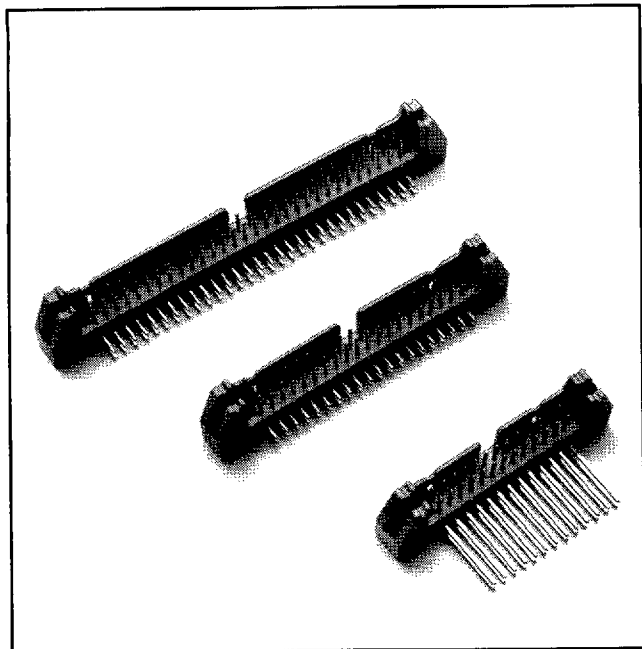


# .100" x .100" Latch/Ejector Header

Right Angle, 3 Wall



- Military (with 3M's 3518 polarizing key) and center bump polarization
- Low profile
- Optional ejector latches
- Mounting holes for securing header to board
- Three wall shrouded to help prevent physical and chemical pin damage
- Solder tail and wrap tail options

TS-0158-11  
Sheet 1 of 4

79

## Physical

### Insulation

Material: Glass Filled Polyester (PBT)  
Flammability: UL 94V-0  
Color: Gray

### Contact

Material: Phosphor Bronze (C510)  
Plating  
Underplate: 100  $\mu$ " [ 2.54  $\mu$ m ] Nickel — QQ-N-290, Class 2  
Wiping Area: 30  $\mu$ " [ 0.76  $\mu$ m ] Gold — MIL-G-45204, Type II, Grade C  
Solder Tails: 200  $\mu$ " [ 5.08  $\mu$ m ] 60/40 Tin Lead — MIL-P-81728  
Wrap Tails: Gold Flash

Marking: 3M Logo, Part Identification Number and Orientation Triangle

## Electrical

Current Rating: 1 A  
Insulation Resistance:  $>1 \times 10^9 \Omega$  at 500 Vdc  
Withstanding Voltage: 1000 Vrms at Sea Level

## Environmental

Temperature Rating:  $-55^\circ\text{C}$  to  $+105^\circ\text{C}$

UL File No.: E68080  
CSA File No.: LR 40971

3M Electronic Products Division

6801 River Place Blvd.  
Austin, TX 78726-9000

9005413 0000209 089

# .100" x .100" Latch/Ejector Header

Right Angle, 3 Wall

Sheet 2 of 4

PIN QTY	3M PART NUMBER	DIMENSIONS						POLARIZATION NOTCHES PROVIDED	
		A	B	C	D		H		
10	3446-X0XX -X2XX -X3XX -X4XX	1.26 [32.0]	.71 [18.0]	.865 [21.97]	2.00 2.18 2.10	[50.8] [55.4] [55.3]	1.14 1.32 1.24	[29.0] [33.5] [31.5]	C
14	3314-X0XX -X2XX -X3XX -X4XX	1.46 [37.1]	.91 [23.1]	1.065 [27.05]	2.20 2.38 2.30	[55.9] [60.5] [58.4]	1.14 1.32 1.24	[29.0] [33.5] [31.5]	B C
16	3408-X0XX -X2XX -X3XX -X4XX	1.56 [39.6]	1.01 [25.7]	1.165 [29.59]	2.30 2.48 2.49	[58.4] [63.0] [61.0]	1.14 1.32 1.24	[29.0] [33.5] [31.5]	A B C
20	3428-X0XX -X2XX -X3XX -X4XX	1.76 [44.7]	1.21 [30.7]	1.365 [34.67]	2.50 2.68 2.60	[63.5] [68.1] [66.0]	1.14 1.32 1.24	[29.0] [33.5] [31.5]	A B C
26	3429-X0XX -X2XX -X3XX -X4XX	2.06 [52.3]	1.51 [38.4]	1.665 [42.29]	2.80 2.98 2.90	[71.1] [75.7] [73.7]	1.14 1.32 1.24	[29.0] [33.5] [31.5]	A B C
34	3431-X0XX -X2XX -X3XX -X4XX	2.46 [62.5]	1.91 [48.5]	2.065 [52.45]	3.20 3.38 3.30	[81.3] [85.9] [83.8]	1.14 1.32 1.24	[29.0] [33.5] [31.5]	A B C
40	3432-X0XX -X2XX -X3XX -X4XX	2.76 [70.1]	2.21 [56.1]	2.365 [60.07]	3.50 3.68 3.60	[88.9] [93.5] [91.4]	1.14 1.32 1.24	[29.0] [33.5] [31.5]	A B C
50	3433-X0XX -X2XX -X3XX -X4XX	3.26 [82.8]	2.71 [68.8]	2.865 [72.77]	4.00 4.18 4.10	[101.6] [106.2] [104.1]	1.14 1.32 1.24	[29.0] [33.5] [31.5]	A B C
60	3372-X0XX -X2XX -X3XX -X4XX	3.76 [95.5]	3.21 [81.5]	3.365 [85.47]	4.50 4.68 4.60	[114.3] [118.9] [116.8]	1.14 1.32 1.24	[29.0] [33.5] [31.5]	A B C
64	3764-X0XX -X2XX -X3XX -X4XX	3.96 [100.6]	3.41 [86.6]	3.565 [90.55]	4.70 4.88 4.80	[119.4] [124.0] [121.9]	1.14 1.32 1.24	[29.0] [33.5] [31.5]	A B C

3M Part No. Suffix	Contact Tail	Dim E	Dim F	Dim G
-1XX2	Solder Tail for .062 [ 1.57 ] Thick PC Board	.112 [ 2.84 ]	.0245 ± .0005 with .028 ± .001 [ 0.71 ]	.035 ± .003 [ 0.89 ] (Note 3)
-1X03	Solder Tail for .094 to .125 [ 2.39 to 3.18 ] Thick PC Board	.155 [ 3.94 ]	.0245 ± .0005 with .028 ± .001 [ 0.71 ]	.035 ± .003 [ 0.89 ]
-3X05	Wire Wrap Tail for up to 3 Levels of Wire Wrap	.61 [ 15.4 ] Ref	.025 ± .002 [ 0.64 ]	.045 ± .003 [ 1.14 ]

**Notes:**

- Notches A & C will accommodate 3M Polarizing Keys (3M Part Number 3518 or M3518).
- Accepts rear and front entry: mounting hardware: #4-24 thread cutting screw, 3M Part #3341-5 (.116 [ 2.95 ] dia mounting hole). Front Entry (prior to installation of Latch): #2-56 bolt and nut. 3M Part #3341-6 (.106 [ 2.69 ] dia mounting hole).
- The recommended PCB hole size for the kinked tail positions on the .112" solder tail connector is .035" ± .002.

Inch  
[mm]

Tolerance Unless Noted			
	.0	.00	.000
Inch	±.1	±.01	±.005

[ ] Dimensions for Reference Only

## Ordering Information

XXXX-XXXX

3M Part Number

Pin Configuration and Shrouding:

- 1 = Right Angle Solder Tail, 3 Wall
- 3 = Right Angle Wrap Tail, 3 Wall

Ejector/Latch System

- 0 = None
- 2 = Short when non-strain relief socket is used.
- 3 = Long when socket with strain relief is used.
- 4 = Ejector Only

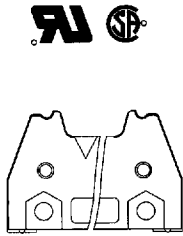
Tail

- 02 = Solder Tails for .062 [ 1.57 ] Thick Board.
- K2 = Kinked Solder Tails for .062 [ 1.57 ] Thick Board.
- 03 = Solder Tails for .094 to .125 [ 2.39 to 3.18 ] Thick Board.
- 05 = Wrap Tails for up to 3 Levels of Wire Wrap.

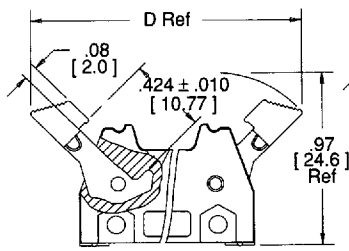
# .100" x .100" Latch/Ejector Header

Right Angle, 3 Wall

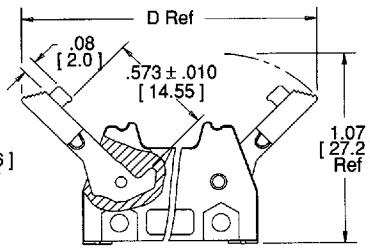
-10XX or -3005  
Header With  
No Ejector/Latch



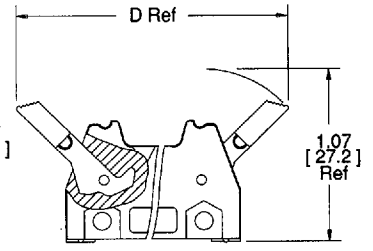
-12XX or -3205  
Header With  
Short Ejector/Latch  
(3M Part No. 3505-2)  
for 3M Sockets Without  
Strain Relief



-13XX or -3305  
Header With  
Long Ejector/Latch  
(3M Part No. 3505-3)  
for 3M Sockets With  
Strain Relief

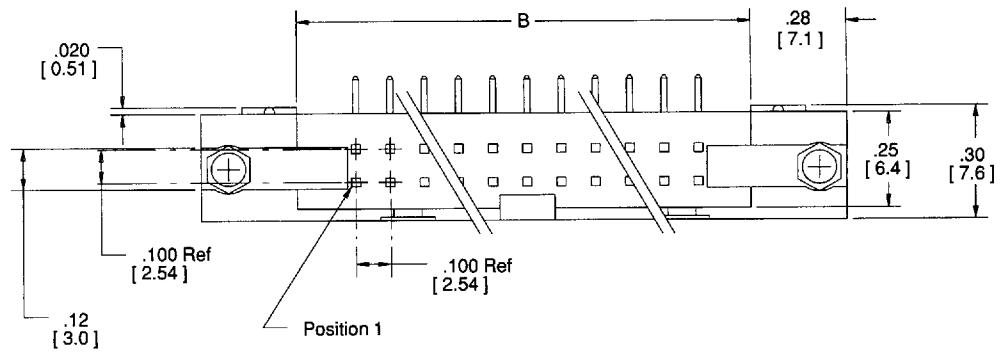


-14XX or -3405  
Header With  
Ejector Only  
(3M Part No. 3505-4)

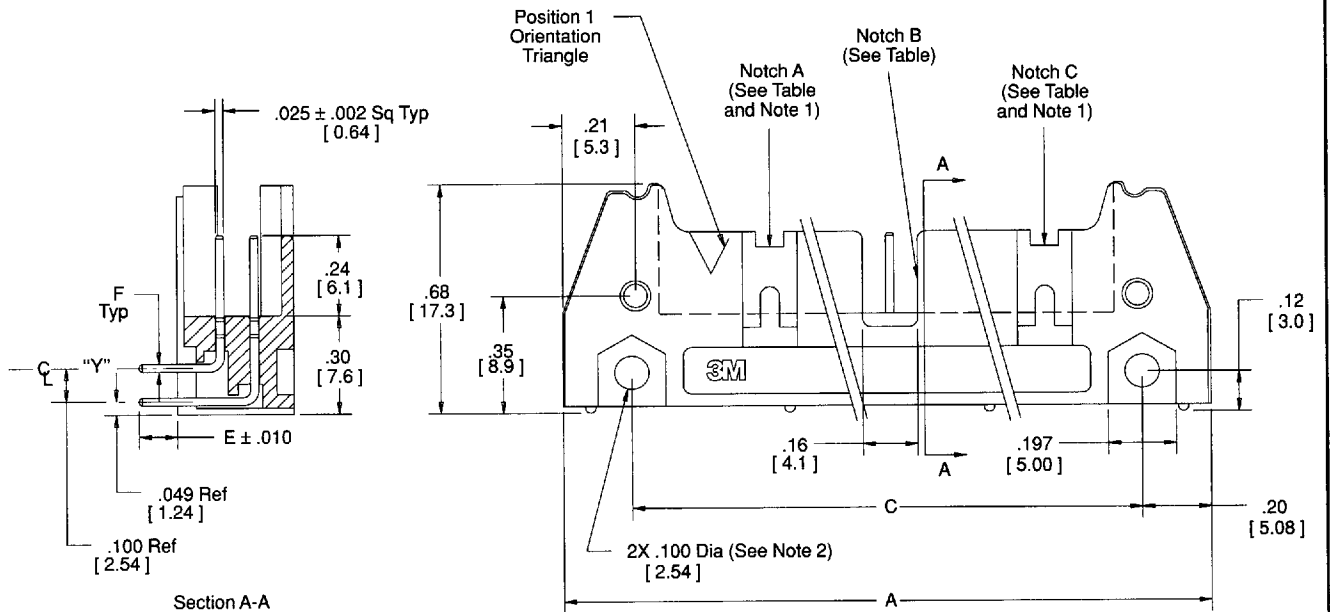


Note - This Ejector  
is a Nickel Plated  
Zinc Alloy Casting.

Sheet 3 of 4



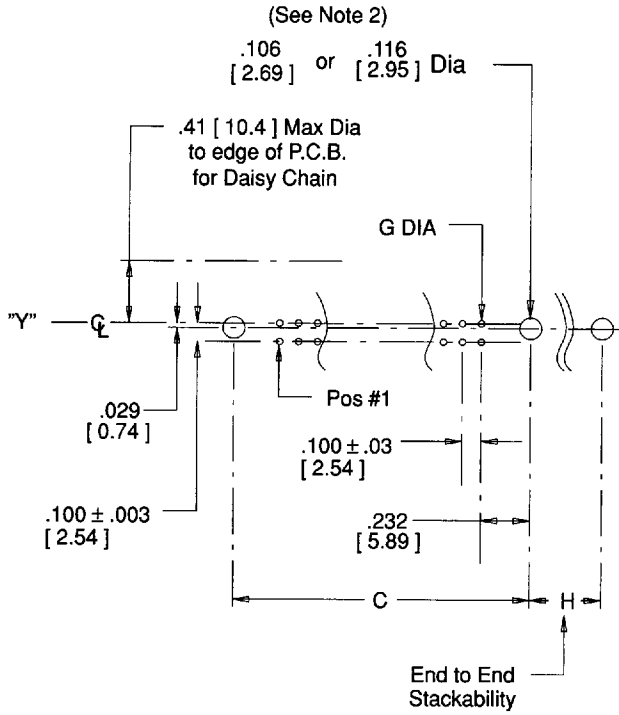
TS-0158-11



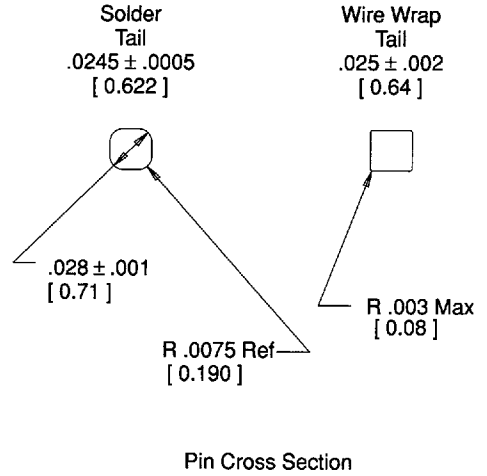
# .100" x .100" Latch/Ejector Header

Right Angle, 3 Wall

Sheet 4 of 4



Recommended Mounting Hold Pattern



TS-0158-11