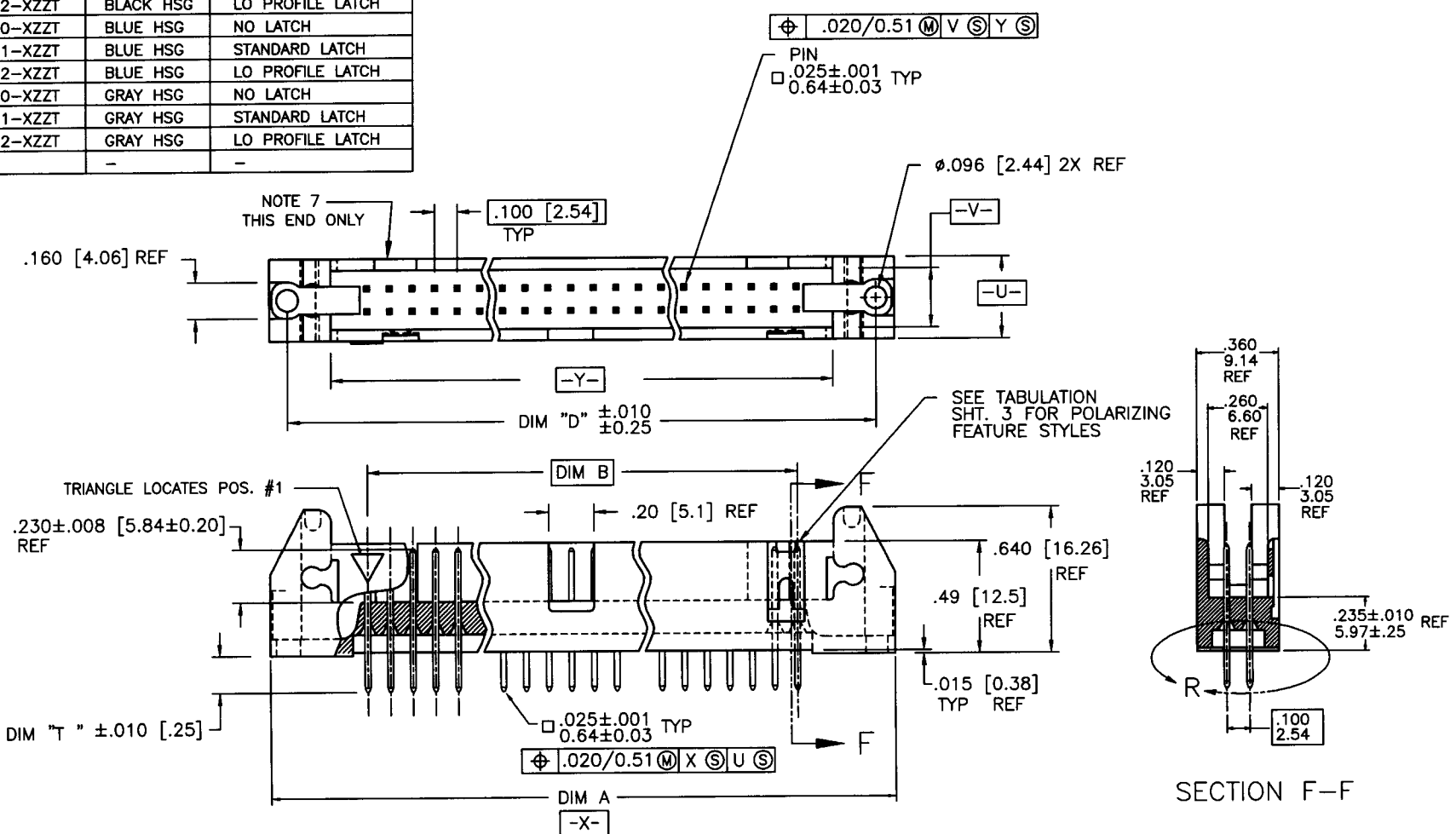


Tous droits strictement réservés. Reproduction ou communication à des tiers interdite sous quelque forme que ce soit sans autorisation écrite du propriétaire.
 Propriété de © BERG ELECTRONICS. Droits de reproduction BERG ELECTRONICS INC.



All rights strictly reserved. Reproduction or issue to third parties in any form whatever is not permitted without written authority from the proprietor.
 Property of © BERG ELECTRONICS Copyright BERG ELECTRONICS INC.

PRODUCT NO	HSG. COLOR	STYLE
72310-XZZT	BLACK HSG	NO LATCH
72311-XZZT	BLACK HSG	STANDARD LATCH
72312-XZZT	BLACK HSG	LO PROFILE LATCH
72320-XZZT	BLUE HSG	NO LATCH
72321-XZZT	BLUE HSG	STANDARD LATCH
72322-XZZT	BLUE HSG	LO PROFILE LATCH
72330-XZZT	GRAY HSG	NO LATCH
72331-XZZT	GRAY HSG	STANDARD LATCH
72332-XZZT	GRAY HSG	LO PROFILE LATCH
-	-	-



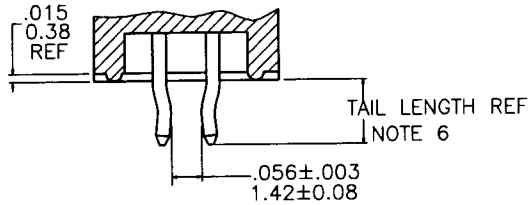
mat'l. code				tolerances unless otherwise specified		CUSTOMER COPY		BERG ELECTRONICS	
ltr	ech no	dr	date	linear	angles	projection	title		
A	V61151	MDF	8/16/98	linear	.XX $\pm .01/.3$		EJECT HEADER ASS'Y SEA-HORSE, 4 WALL		
B	V61479	EPK	10/15/96		.XXX $\pm .005/.13$				
C	V70787	SAR	6/2/97	angles	.XXXX $\pm .0020/.051$		product family HEADER code size dwg no		
D	V70908	SAR	6/12/97	dr	0' $\pm 2'$				
E	C90009	EPK	2/24/99	engr	M FETROW 8/16/96	INCH/MM	A 72310 sheet		
F	V90962	EPK	4/26/99	chr	L FYE 8/16/96				
				appd	L FYE 8/16/96	scale	1.5:1		
sheet index	revision sheet	F	E	F					
		1	2	3					

SECTION F-F

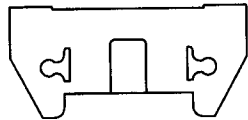
Tous droits strictement reserves. Reproduction ou communication a des tiers interdite sous quelque forme que ce soit sans autorisation écrite du propriétaire. Propriete de ©BERG ELECTRONICS. Droits de reproduction BERG ELECTRONICS INC.

All rights strictly reserved. Reproduction or issue to third parties in any form whatever is not permitted without written authority from the proprietor. Property of ©BERG ELECTRONICS Copyright BERG ELECTRONICS INC.

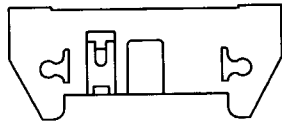
PRODUCT NUMBER
SEE TABLE



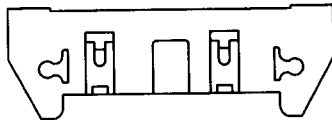
SECTION R-R
SCALE 3/1



2x5
STYLE A



2x7
STYLE C



2 X 8 & LARGER
STYLE D

NOTES:

- ①. PLASTIC MATERIAL: (SEE TABLES)
30% GLASS FILLED,
FLAME RETARDANT PER UL-94-V0
- ②. LATCH: (SEE TABLES)
STANDARD LATCH: - COLOR TO MATCH HOUSING.
(USED WITH FEMALE QUICKIE WITH STRAIN RELIEF)
LO PROFILE LATCH: - COLOR TO MATCH HOUSING.
(USED WITH FEMALE QUICKIE WITHOUT STRAIN RELIEF)
- ③. PIN MATERIAL: PHOS BRONZE.
4. 3 LBS/1.36 KG MIN PIN RETENTION.
5. PACKAGING:
* THE STANDARD METHOD OF PACKAGING IS IN TRAYS.
* "G" AT THE END OF THE PART NUMBER INDICATES
TAPE AND REEL "G-PAX".
- ⑥. PART NUMBER WITH "R" AT THE END WILL INDICATE RETENTIVE TAILS.
(ONLY TAIL LENGTH OF .120 AND .150).
FOR PRODUCT SIZES OF 2X14 AND SMALLER, THE CENTER TWO COLUMNS
OF PINS ARE TO BE KINKED; FOR PRODUCT SIZES OF 2X15 AND GREATER,
THE SECOND AND THIRD COLUMNS OF PINS IN EACH END ARE TO BE KINKED.
- ⑦. PART SIZE 2 X 5 (10 POSITION) ONLY HAS ONE SLOT ON
THE REAR WALL.

mat'l. code				tolerances unless otherwise specified		CUSTOMER COPY		BERG ELECTRONICS			
ltr	ecn no	dr	date	linear	.XX ±.01/.3	projection		title			
E					.XXX ±.005/.13			EJECT HEADER ASS'Y		SEA-HORSE, 4 WALL	
					.XXXX ±.0020/.051			product family		HEADER	
				angles	0° ±2'	INCH/MM	scale	size			
				dr	M. FETROW			8/16/96	dwg no		
				enrg	L. FYE			8/16/96	A 72310		
				chr	L. FYE			8/16/96	sheet		
				appd	L. FYE	8/16/96	1:1		2 of 3		
sheet index	revision sheet							cage code			
								22526			

Tous droits strictement reserves. Reproduction ou communication a des tiers interdite sous quelque forme que ce soit sans autorisation écrite du propriétaire. Propriete de ©BERG ELECTRONICS. Droits de reproduction BERG ELECTRONICS INC.



All rights strictly reserved. Reproduction or issue to third parties in any form whatever is not permitted without written authority from the proprietor. Property of ©BERG ELECTRONICS Copyright BERG ELECTRONICS INC.

PRODUCT NO.

723 M L - X ZZ T

PLASTIC MAT'L NOTE 1	
1	BLACK PCT HIGH TEMP
2	BLUE PBT
3	GRAY PBT

PLATING	
A	30u"/0.76u Au DUPLEX
B	30u"/0.76u GXT DUPLEX
G	15u"/0.38u DUPLEX
1	30u"/0.76u Au GOLD
5	30u"/0.76u GXT
6	15u"/0.38u GXT
7	UNPLATED/DUPLEX
9	15u"/0.38u Au GOLD

TAIL LENGTH	
1	.105/2.67
2	.120/3.05
5	.150/3.81
6	.200/5.08
7	.675/17.15

LATCH STYLE NOTE 2	
0	NO LATCH
1	STANDARD LATCH
2	LO PROFILE LATCH

	POSITIONS	DIM A	DIM B	DIM D	HDR. STYLE
10	2 x 5	1.260/32.00	.400/10.16	1.100/27.94	A
14	2 x 7	1.460/37.08	.600/15.24	1.300/33.02	C
16	2 x 8	1.560/39.62	.700/17.78	1.400/35.56	D
20	2 x 10	1.760/44.70	.900/22.86	1.600/40.64	D
24	2 x 12	1.960/49.78	1.100/27.49	1.800/45.72	D
26	2 x 13	2.060/52.34	1.200/30.48	1.900/48.26	D
30	2 x 15	2.260/57.40	1.400/35.56	2.100/53.34	D
34	2 x 17	2.460/62.48	1.600/40.64	2.300/58.42	D
36	2 x 18	2.560/65.02	1.700/43.18	2.400/60.96	D
40	2 x 20	2.760/70.10	1.900/48.26	2.600/66.04	D
44	2 x 22	2.960/75.18	2.100/53.34	2.800/71.12	D
50	2 x 25	3.260/82.80	2.400/60.96	3.100/78.74	D
60	2 x 30	3.760/95.50	2.900/73.66	3.600/91.44	D

mat'l. code				tolerances unless otherwise specified		CUSTOMER COPY		BERG ELECTRONICS			
ltr	ecp no	dr	date	linear	.XX ±.01/.3	projection		title			
F					.XXX ±.005/.13			EJECT HEADER ASS'Y SEA-HORSE, 4 WALL			
					.XXXX ±.0020/.051			product family		HEADER	
				angles	0° ±2°	INCH/MM		code			
				dr	M. FETROW	B/16/96	scale		-		
				enrg	L. FYE	B/16/96	1:1		-		
				chr	L. FYE	B/16/96	A		-		
				appd	L. FYE	B/16/96	72310		-		
sheet index		revision sheet						cage code			
								22526			