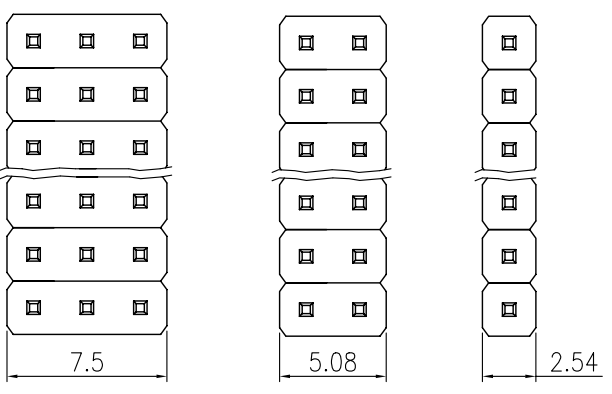
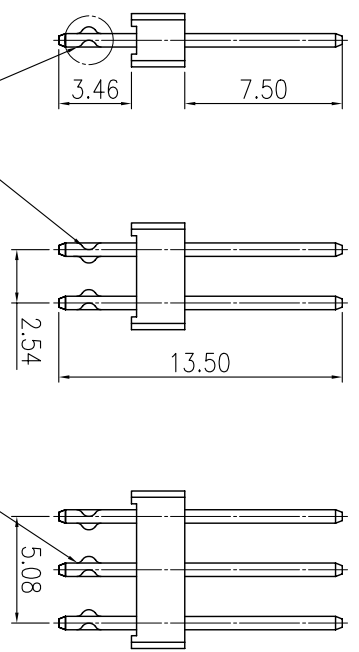
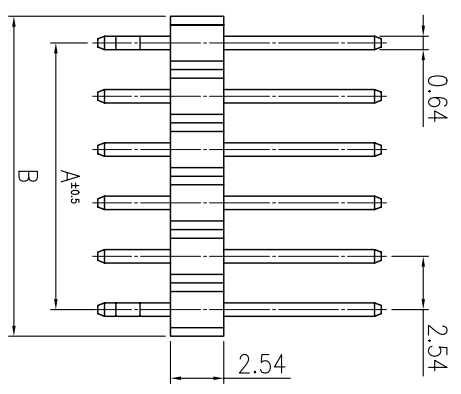


VI.1 NOTE: THIS DEVICE IS ROHS COMPLIANT.

		REVISIONS					
SYM	DISCRIPTION	DATE	APPROVED	SYM	DISCRIPTION	DATE	APPROVED
Δ	NOTS ROHS STANDARD	19/MAY/06	KEN	Δ			
Δ				Δ			

****CUSTOMER DRAWING FOR REFERENCE ONLY, SAMPLES APPROVAL ARE REQUIRED!!**



SPECIFICATION
 CURRENT RATING : 3 A
 INSULATOR RESISTANCE: 5000MΩ MIN.
 DIELECTRIC WITHSTANDING : AC 500V.
 OPERATING TEMPERATURE: -40C~+105C.
 CONTACT MATERIAL : BRASS
 INSULATOR MATERIAL : STANDARD : P.B.T
 FINISH : GOLD FLASH

ORDER INFORMATION:
 PHd014-PXXGXGf-750
 PH: PIN HEADER
 q: 2.54mmX2.54mm PITCH
 014: SERIES NO.
 P: PCB TYPE STRAIGHT
 XX: NO. OF PINS PER ROW
 OX: NO. OF ROW
 Gf: TERMINAL PLATING, GOLD FLUSH
 750: POST HEIGHT, 7.50 mm
 K: KINKED PINS(OPTION)

PART NO.	CIRCUITS	DIMENSION	
		A	B
PHd014-P020_Gf-750	X2	2.54	5.08
PHd014-P030_Gf-750	X3	5.08	7.62
PHd014-P040_Gf-750	X4	7.62	10.16
PHd014-P050_Gf-750	X5	10.16	12.70
PHd014-P060_Gf-750	X6	12.70	15.24
PHd014-P070_Gf-750	X7	15.24	17.78
PHd014-P080_Gf-750	X8	17.78	20.32
PHd014-P090_Gf-750	X9	20.32	22.86
PHd014-P100_Gf-750	X10	22.86	25.40
PHd014-P110_Gf-750	X11	25.40	27.94
PHd014-P120_Gf-750	X12	27.94	30.48
PHd014-P130_Gf-750	X13	30.48	33.02
PHd014-P140_Gf-750	X14	33.02	35.56
PHd014-P150_Gf-750	X15	35.56	38.10
PHd014-P160_Gf-750	X16	38.10	40.64
PHd014-P170_Gf-750	X17	40.64	43.18
PHd014-P180_Gf-750	X18	43.18	45.72
PHd014-P190_Gf-750	X19	45.72	48.26
PHd014-P200_Gf-750	X20	48.26	50.80
PHd014-P210_Gf-750	X21	50.80	53.34
PHd014-P220_Gf-750	X22	53.34	55.88
PHd014-P230_Gf-750	X23	55.88	58.42
PHd014-P240_Gf-750	X24	58.42	60.96
PHd014-P250_Gf-750	X25	60.96	63.50
PHd014-P260_Gf-750	X26	63.50	66.04
PHd014-P270_Gf-750	X27	66.04	68.58
PHd014-P280_Gf-750	X28	68.58	71.12
PHd014-P290_Gf-750	X29	71.12	73.66
PHd014-P300_Gf-750	X30	73.66	76.20
PHd014-P310_Gf-750	X31	76.20	78.74
PHd014-P320_Gf-750	X32	78.74	81.28
PHd014-P330_Gf-750	X33	81.28	83.82
PHd014-P340_Gf-750	X34	83.82	86.36
PHd014-P350_Gf-750	X35	86.36	88.90
PHd014-P360_Gf-750	X36	88.90	91.44
PHd014-P370_Gf-750	X37	91.44	93.98
PHd014-P380_Gf-750	X38	93.98	96.52
PHd014-P390_Gf-750	X39	96.52	99.06
PHd014-P400_Gf-750	X40	99.06	101.6

TOLERANCES UNLESS OTHERWISE SPECIFIED		SIGNATURES		DATE		MODEL	
±0.25		DRAWN	VVI	10/MAY/03		TITLE	
SYMBOL		UNIT	SCALE	CHECKED	ZOLA	10/MAY/03	
Δ	mm	5/1	APPROVALS			NO.	
		MMT CORPORATION				PHd014-P__0_Gf-750	