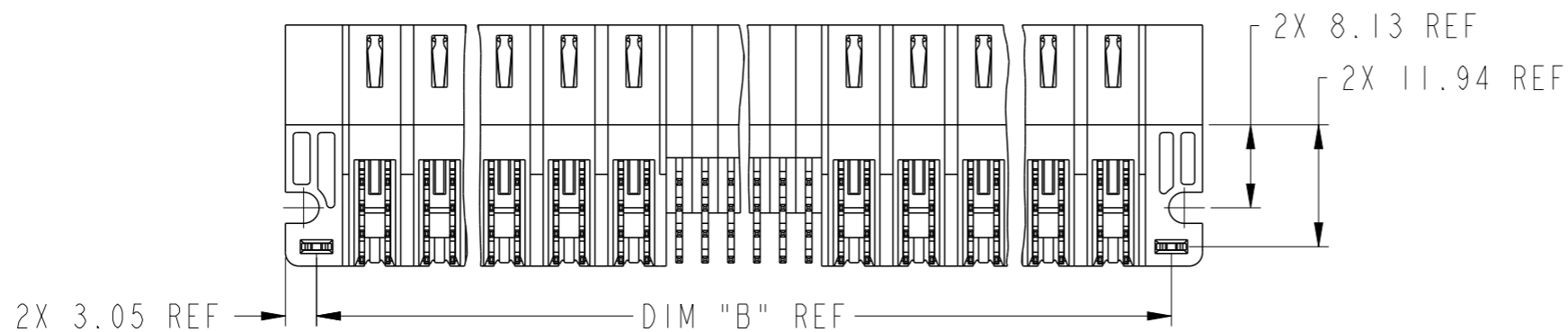
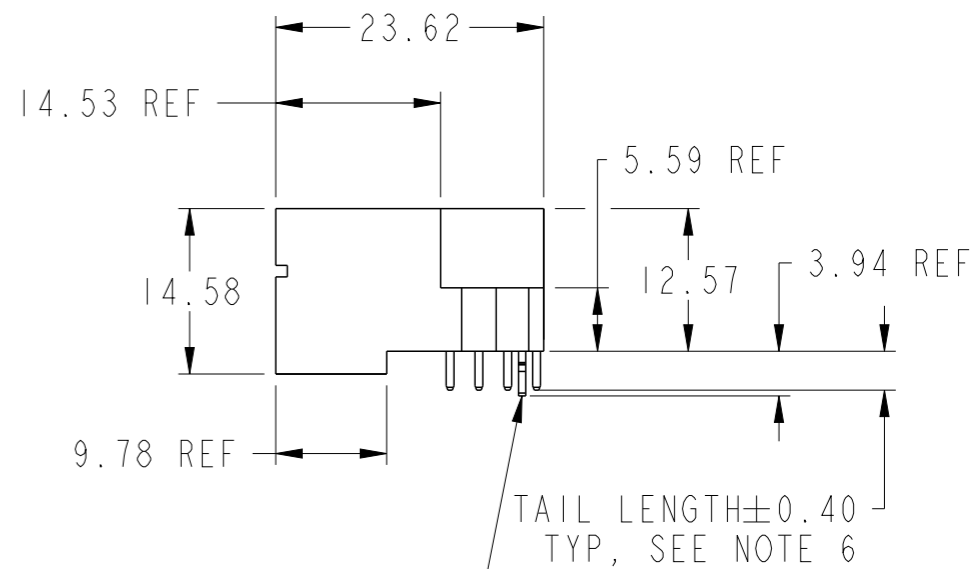
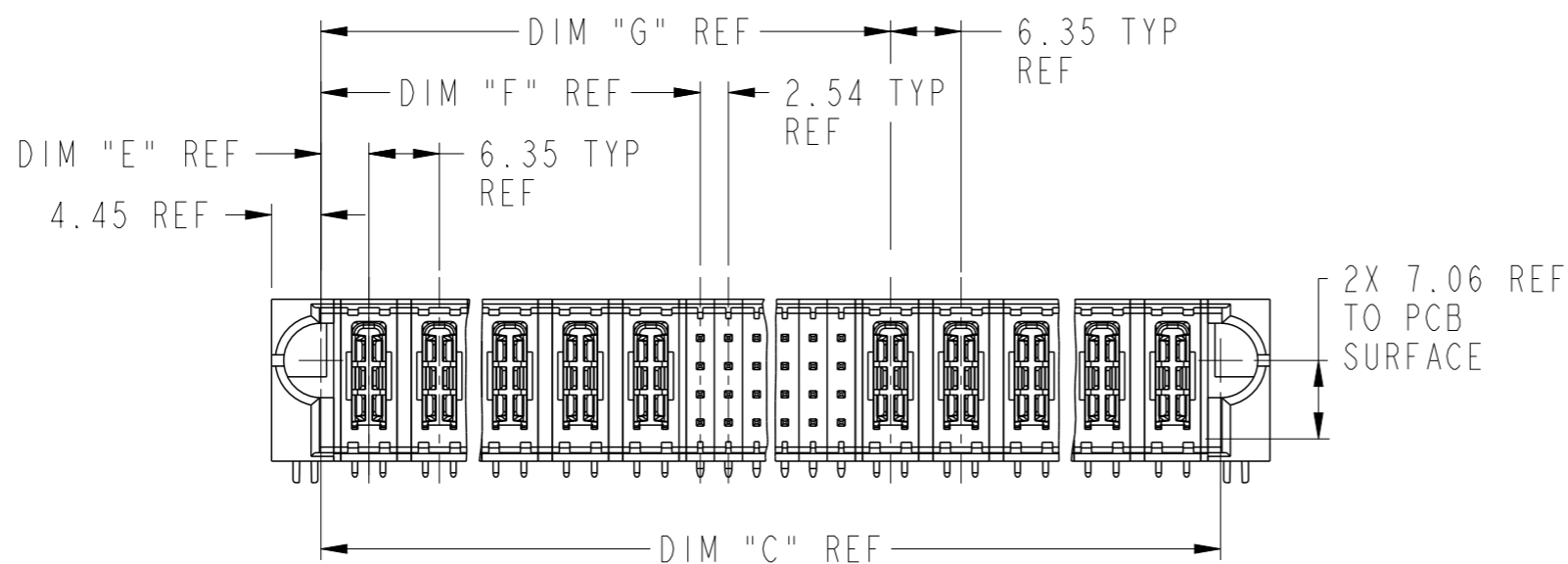
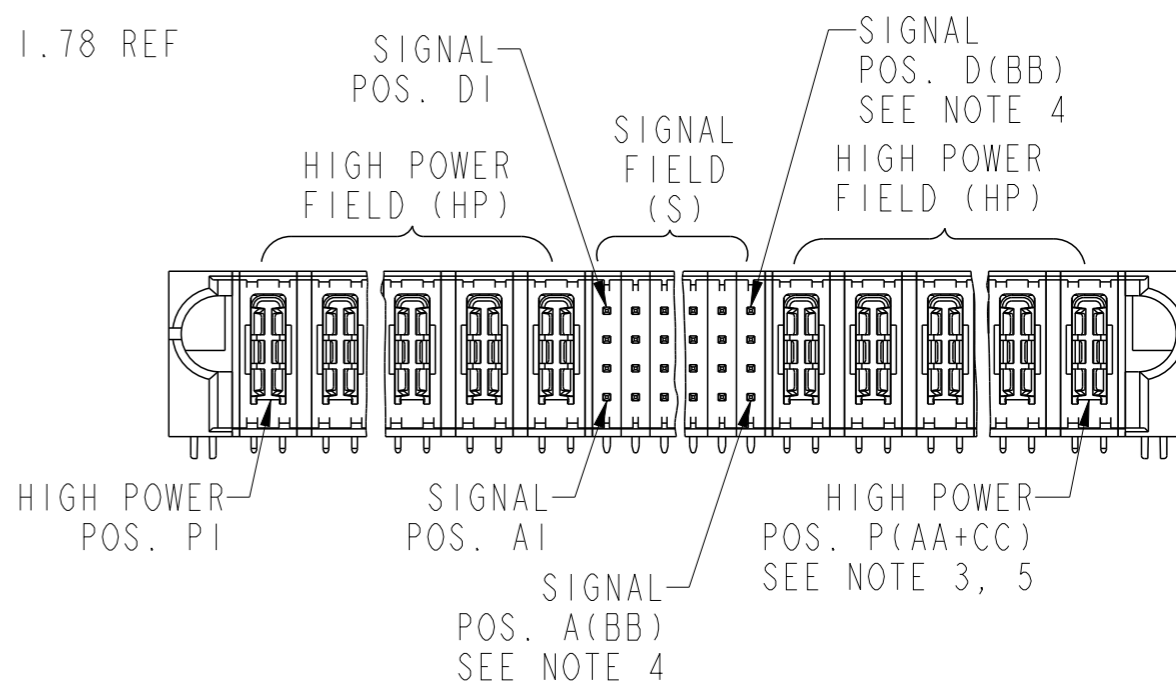
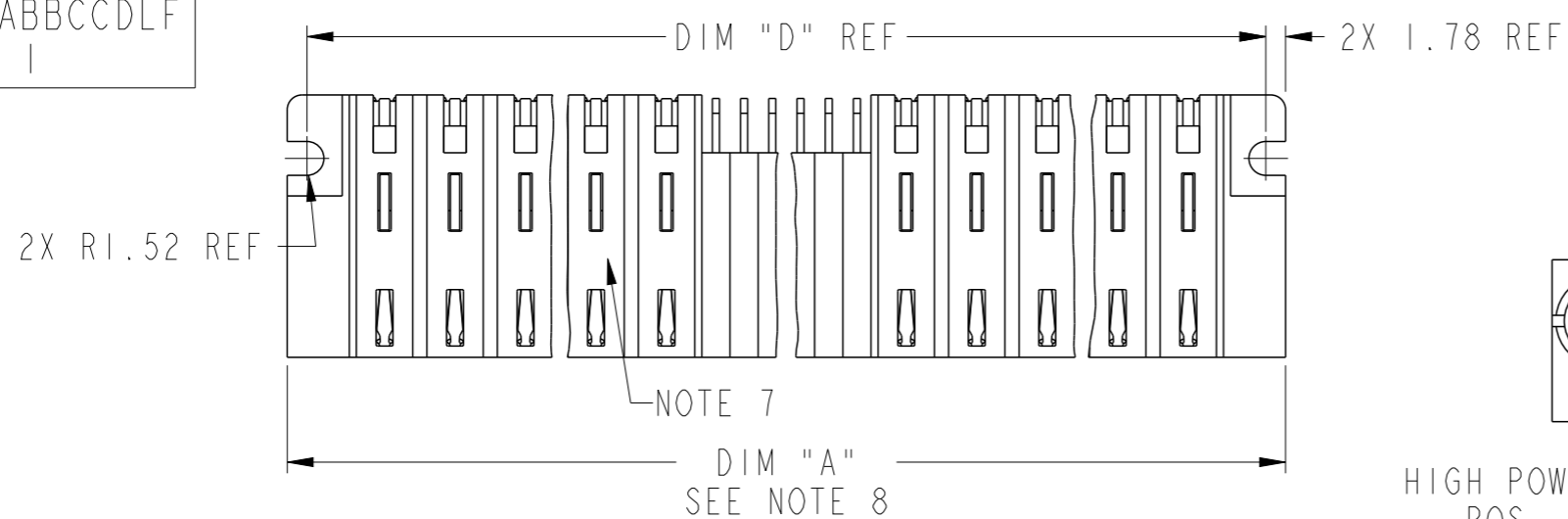


PRODUCT NUMBER
10121750-AABBCCDLF
NOTE 1



HOLD DOWN
2X IF SELECTED
SEE NOTE 6

spec ref	*		
tolerance std	ASME Y14.5	TOLERANCES UNLESS OTHERWISE SPECIFIED	
surface	linear	0.X	±0.5
		0.XX	±0.25
		0.XXX	±0.10
ASME Y14.5	angular	0°	±2°

dr	Peng-Bing Fu	2012/09/12
eng	Helen Zhang	2013/05/21
chr	Shao-Qi Kuang	2013/05/21
appr	Pei-Ming Zheng	2013/05/21

projection	MM	size	A3	scale	3:2
product family	PwrBlade+	ecn no	-	rel level	Released
POWER / SIGNAL / POWER		dwg no	10121750	rev	A
RA HEADER WITH HALF GUIDE PIN		Product - Customer Drw		sheet 1 of 3	



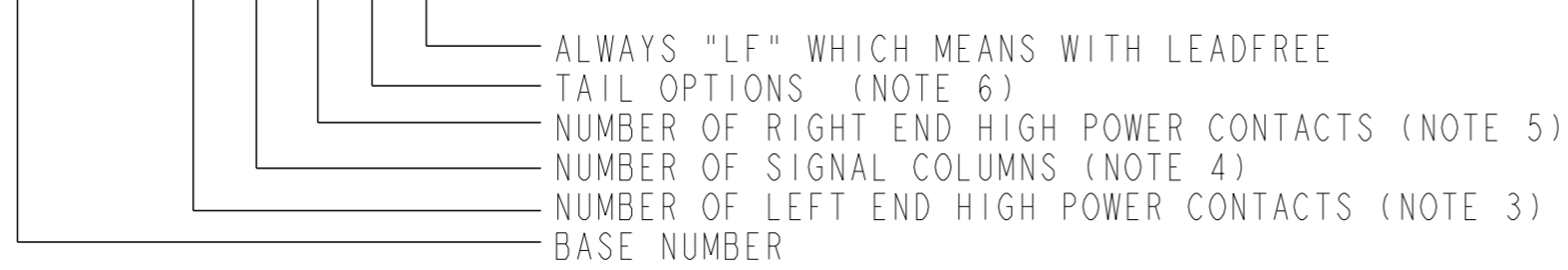
Copyright FCI.

PRODUCT NUMBER
10121750-AABBCCDLF
NOTE 1

ITEM	CONFIGURATIONS	DIM	LENGTH FORMULAS (SEE NOTE 8)
1	HP + S + HP	DIM "A"	6.35 x AA + 2.54 x BB + 6.35 x CC + 11.18 (NOTE 8)
2	HP + S	DIM "B"	DIM "A" - 6.1
3	S + HP	DIM "C"	DIM "A" - 8.89
4	S	DIM "D"	DIM "A" - 3.56
5	HP	DIM "E"	4.32(EXCLUDE ITEM 3 & 4)
		DIM "F"	6.35 x AA + 2.41(EXCLUDE ITEM 5)
		DIM "G"	6.35 x AA + 2.54 x BB + 4.32(EXCLUDE ITEM 2 & 4 & 5)
		DIM "H"	DIM "A" + 0.76
		DIM "J"	5.72(EXCLUDE ITEM 3 & 4)
		DIM "K"	6.35 x AA + 5.08(EXCLUDE ITEM 5)
		DIM "L"	6.35 x AA + 2.54 x BB + 5.72(EXCLUDE ITEM 2 & 4 & 5)

CONNECTOR NOTES:

①. 10121750 - AA BB CC D LF



2. MATERIAL:
 -HOUSING - GLASS FILLED WITH HIGH TEMP THERMOPLASTIC, UL94V-0.
 -SIGNAL CONTACT - COPPER ALLOY.
 -POWER CONTACT - HIGH CONDUCTIVITY COPPER ALLOY.

- ③. LEFT END HIGH POWER CONTACTS, 00 TO 28 AVAILABLE. MAXIMUM OF 28 HIGH POWER CONTACTS PER CONNECTOR.
 ④. SIGNAL CONTACTS, 00 TO 37 COLUMNS AVAILABLE.
 ⑤. RIGHT END HIGH POWER CONTACTS, 00 TO 28 AVAILABLE. MAXIMUM OF 28 HIGH POWER CONTACTS PER CONNECTOR.
 ⑥. TAIL OPTIONS:
 1: 3.43 SOLDER TO BOARD WITH HOLD DOWN
 2: 3.43 SOLDER TO BOARD WITHOUT HOLD DOWN
 3: 3.05 PRESS FIT TO BOARD WITH HOLD DOWN
 4: 3.05 PRESS FIT TO BOARD WITHOUT HOLD DOWN
 5: 4.19 SOLDER TO BOARD WITH HOLD DOWN
 6: 4.19 SOLDER TO BOARD WITHOUT HOLD DOWN
 7: 4.19 PRESS FIT TO BOARD WITH HOLD DOWN
 8: 4.19 PRESS FIT TO BOARD WITHOUT HOLD DOWN

- ⑦. "FCI", PART NUMBER AND DATE CODE TO BE MARKED ON THIS SURFACE. THE MARK CAN BE OMITTED IF THERE IS NOT ENOUGH SPACE ON THIS SURFACE.
 ⑧. THE MAXIMUM OVERALL LENGTH (DIM A) OF A PART IS 203MM.
 9. PLATING SPECIFICATION REFER TO FCI 10116351.

10. PRODUCT SPECIFICATION REFER TO FCI GS-12-658. APPLICATION SPECIFICATION REFER TO FCI GS-20-141. PRODUCT PACKAGED IN TRAYS, REFER TO FCI GS-14-1502.

PCB NOTES:

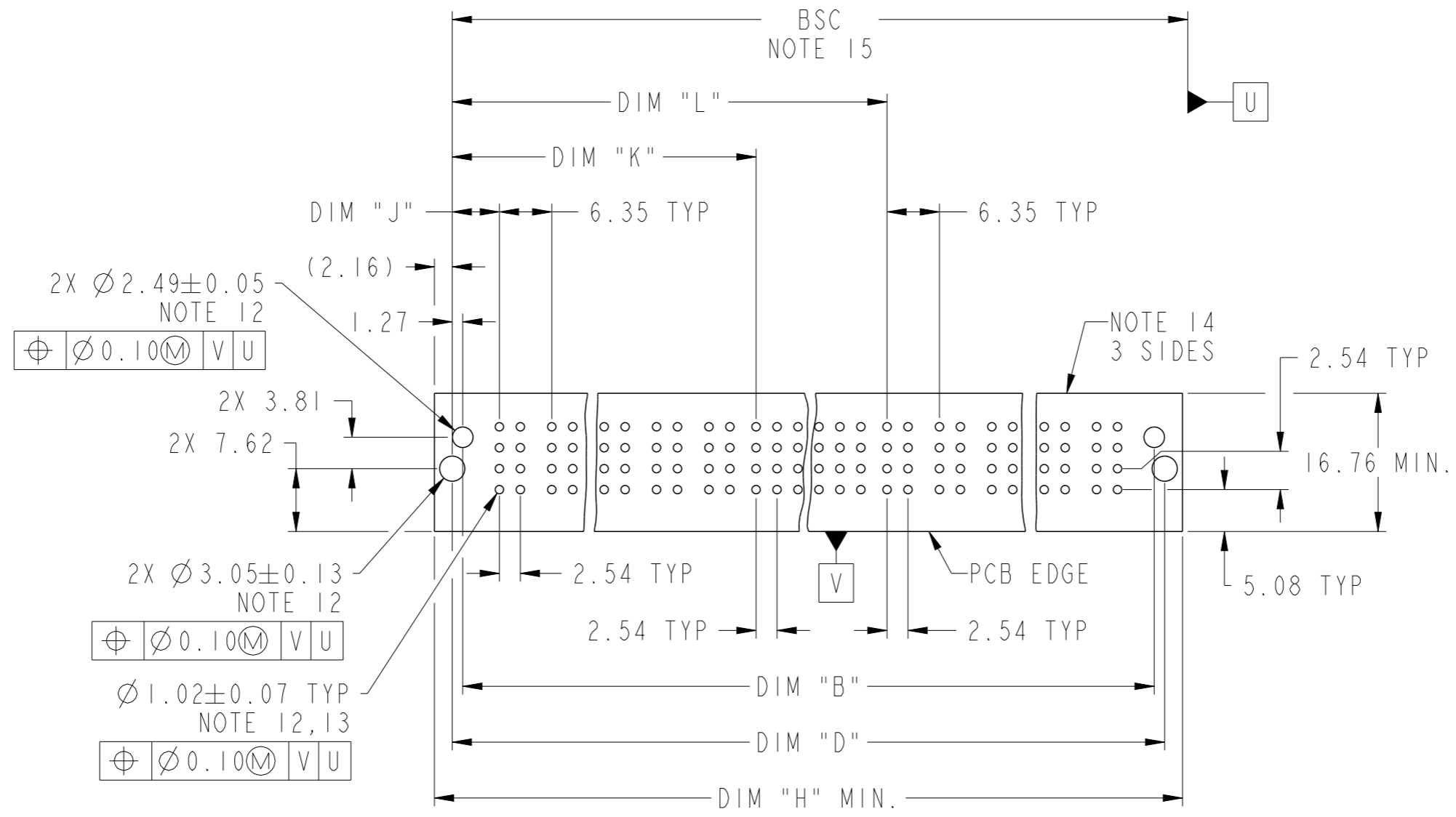
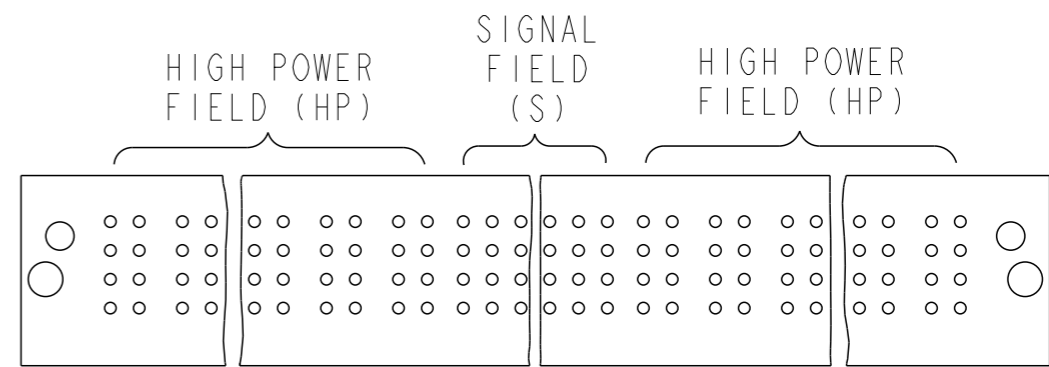
11. ALL DIMENSIONS ARE BASIC UNLESS OTHERWISE SPECIFIED.
 ⑫. ALL HOLE DIAMETERS ARE FINISHED HOLE SIZES.
 ⑬. 1.15±0.025MM DRILLED HOLE PLATED WITH 0.00762MM MIN Sn OVER 0.0254-0.0762MM Cu PLATING TO ACHIEVE A 1.02±0.07MM HOLE.
 ⑭. DENOTES CONNECTOR KEEP OUT ZONE.
 ⑮. DATUM AND BASIC DIMENSIONS WERE ESTABLISHED BY CUSTOMER.



Copyright FCI.

dr	Peng-Bing Fu	2012/09/12	projection 	MM 	size	A3	scale	3:2
eng	Helen Zhang	2013/05/21			ecn no	-		
chr	Shao-Qi Kuang	2013/05/21			rel level	Released		
appr	Pei-Ming Zheng	2013/05/21			product family	PwrBlade+		
		POWER / SIGNAL / POWER RA HEADER WITH HALF GUIDE PIN			dwg no 10121750	rev A		
www.fci.com		cat. no.	Product - Customer Drw		sheet 2 of 3			

PRODUCT NUMBER
10121750-AABBCCDLF
NOTE 1



2X $\varnothing 2.49 \pm 0.05$
NOTE 12
 $\varnothing 0.10 \text{ (M)}$ V U

2X $\varnothing 3.05 \pm 0.13$
NOTE 12
 $\varnothing 0.10 \text{ (M)}$ V U

$\varnothing 1.02 \pm 0.07$ TYP
NOTE 12, 13
 $\varnothing 0.10 \text{ (M)}$ V U

RECOMMENDED PCB LAYOUT

dr	Peng-Bing Fu	2012/09/12	projection	MM	size	A3	scale	3:2	
eng	Helen Zhang	2013/05/21		← →	ecn no	-			
chr	Shao-Qi Kuang	2013/05/21			rel level	Released			
appr	Pei-Ming Zheng	2013/05/21	product family	PwrBlade+	rel level	Released			
		POWER / SIGNAL / POWER			dwg no	10121750		rev	A
www.fci.com		cat. no.	Product - Customer Drw			sheet 3 of 3			

Copyright FCI.