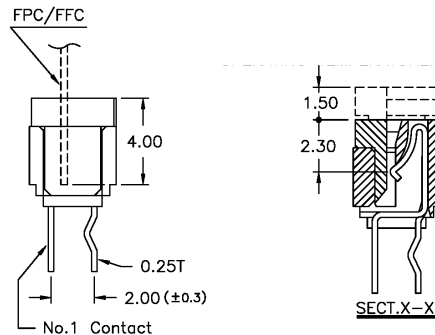
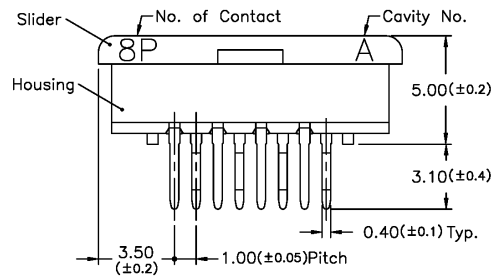


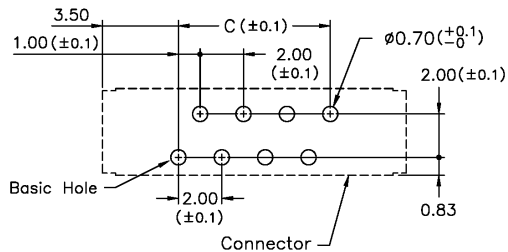
A=Pos. + 6
 B=Pos. + 1.2
 C=Pos. - 1

SPECIFICATIONS

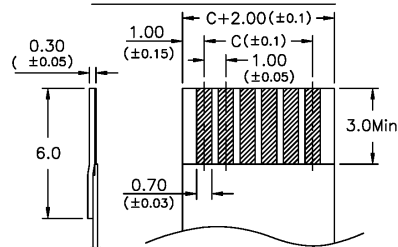
Voltage rating: 50 volts
 Current rating: 0.5 amps
 Contact material: Copper alloy
 Housing material: Thermoplastic
 Slider material: Thermoplastic
 Operating temperature: -55°C to +85°C



PCB Layout



Applicable FPC



RoHS compliant

Series	Type	Positions	Plating
CZF	B	XX	XX
FPC/FFC connector	See drawing	04-32 positions	TN=Tin GD1=Gold 1μ" over nickel GD2=Gold 2μ" over nickel

Rev.	Description	Date	Approved	Drawing	Name	Date
				Approved	Howard	06/08/04
				Checked	Lizzy	06/08/04
				Drawn	Tina	06/08/04
				0.0 ± 0.35	0.00 ± 0.20	Angles ± 3'
				UNIT: mm		

Central Components Manufacturing
 440 Lincoln Blvd., Middlesex, New Jersey 08846
 Phone 732 469-5720 888 288-5152 Fax 732 469-1919

Part No.: **CZF-B-XX-XX**

Description: FPC/FFC connector, 1.0mm pitch