

Ph Free

RoHS Compliant

Features

- High specific capacitance
- 0.01 farad to 1.0 farad
- Very low ESR down to 25 milliOhm.
- Low profile: down to 2.1mm height
- High power pulse capability
- Leakage current 5-120 micro amperes
- Non-polar
- Foot prints 20×15mm or 28×17mm or 48×30mm
- Voltage ratings 3.5V-25V
- Operating temperature range: -20 to +70°C

Applications

- GSM/ GPRS Wireless Communication Products
- ADSL/ xDSL and Other Communication Equipment
- Automatic Meter Reading Systems
- Wireless Alarm Systems
- Memory Back-up
- Mainframe Computer De-coupling
- Hybrid Battery Packs
- Portable Medical Laser

How to Order

BZ 01 5 A 503 Z A B
 ① ② ③ ④ ⑤ ⑥ ⑦ ⑧

① Series (BZ: BestCap)

② Size

| | | | |
|--------------|---------|--------------|---------|
| 01/11 | 28×17mm | 02/12 | 48×30mm |
| 05/25 | 20×15mm | | |

③ Rated Voltage (VDC)

| | | | |
|----------|------|----------|------|
| 3 | 3.5 | 7 | 7.0 |
| 4 | 4.5 | 9 | 9.0 |
| 5 | 5.5 | C | 12.0 |
| F | 15.0 | | |

④ A: Standard

B/ C: LowProfile

⑤ Capacitance (μF)

| | | | |
|------------|------|------------|--------|
| ex: | | 204 | 200mF |
| 603 | 60mF | 105 | 1000mF |

⑥ Tolerance

| | | | |
|----------|------------|----------|------------|
| Z | +80%, -20% | P | +100%, -0% |
|----------|------------|----------|------------|

⑦ Lead Specifications

| | |
|------------|----------------------------------|
| A | Through Hole Type |
| H | Through Hole with stand off Type |
| L/S | Surface Mount Type |

⑧ Package

| | |
|----------|--------------|
| B | Bulk in tray |
|----------|--------------|

Ratings and Part Number Preference

● BZ01/ BZ11 case size

| AVX Part Number | Rated Voltage (V) | Cap (mF) | ESR (mW@1kHz) | | Leakage Current (max. μA) | Height (mm/ max.) | | | | |
|-----------------|-------------------|----------|---------------|------|---------------------------|-------------------|--------|--------|--------|--------------|
| | | | typ. | max. | | A-lead | H-lead | L-lead | S-lead | S-lead (AJ)* |
| BZ013B503Z_B | 3.6 | 50 | 100 | 120 | 5 | — | — | — | 3.2 | 2.1 |
| BZ013A703Z_B | | 70 | 140 | 168 | 5 | 3.5 | 6.4 | — | 4 | 2.9 |
| BZ013A144Z_B | | 140 | 70 | 84 | 5 | 5.3 | 8.2 | — | 5.8 | — |
| BZ014B333Z_B | 4.5 | 33 | 150 | 180 | 5 | — | — | — | 3.5 | 2.4 |
| BZ014C453Z_B | | 45 | 60 | 72 | 10 | — | — | 2.6 | 2.7 | — |
| BZ114C104ZNB | | 100 | 60 | 72 | 20 | — | — | 2.6 | — | — |
| BZ015B303Z_B | 5.5 | 30 | 160 | 192 | 5 | — | — | — | 3.8 | 2.7 |
| BZ015A503Z_B | | 50 | 160 | 192 | 5 | 4.1 | 7 | — | 4.6 | 3.5 |
| BZ015B603Z_B | | 60 | 80 | 96 | 10 | 5.4 | 8.3 | 5.6 | 5.9 | — |
| BZ015A104Z_B | | 100 | 80 | 96 | 10 | 6.7 | 9.6 | 6.9 | 7.2 | — |
| BZ017A333Z_B | 7 | 33 | 225 | 270 | 5 | 5.1 | 8 | — | 5.6 | 4.5 |
| BZ019B223Z_B | 9 | 22 | 250 | 300 | 5 | 4.7 | 7.6 | — | 5.2 | 4.1 |
| BZ019A333Z_B | | 33 | 250 | 300 | 5 | 5.5 | 8.4 | — | 6 | 4.9 |
| BZ01CB153Z_B | | 15 | 350 | 420 | 5 | 5.9 | 8.8 | — | 6.4 | 5.3 |
| BZ01CA223Z_B | 12 | 22 | 350 | 420 | 5 | 7.1 | 10 | — | 7.6 | 6.5 |
| BZ11CA473ZSB | | 47 | 350 | 420 | 10 | — | — | — | 6.5 | — |

* Select S-Lead BZ01 BestCap are available with insulation on the bottom of the part and zero clearance from the PCB. To order, please add special requirement AJ to the end of the part number. Example) BZ013B503ZSBAJ

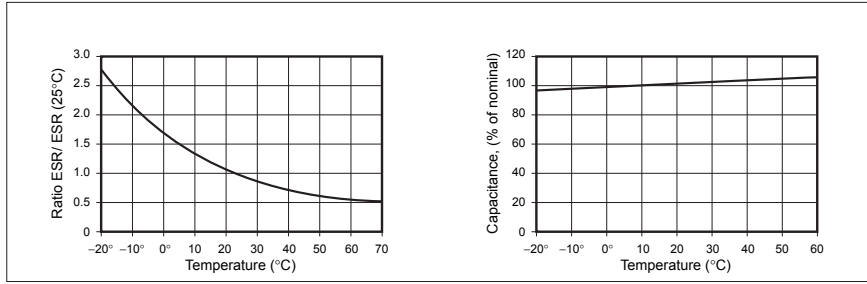
● BZ02/ BZ12 case size

| AVX Part Number | Rated Voltage (V) | Cap (mF) | ESR (m@1kHz) | | Leakage Current (max. μA) | Height (mm/ max.) | | |
|-----------------|-------------------|----------|--------------|------|---------------------------|-------------------|--------|--------|
| | | | typ. | max. | | A-lead | H-lead | L-lead |
| BZ023A284Z_B | 3.6 | 280 | 45 | 54 | 20 | 3.5 | 6.4 | 3.7 |
| BZ023A564Z_B | | 560 | 25 | 30 | 40 | 5.3 | 8.2 | 5.5 |
| BZ025A204Z_B | | 200 | 60 | 72 | 20 | 4.1 | 7 | 4.3 |
| BZ025A404Z_B | 5.5 | 400 | 35 | 42 | 40 | 6.7 | 9.6 | 6.9 |
| BZ125A105ZAB | | 1000 | 35 | 42 | 120 | 6.1 | — | — |
| BZ029A124Z_B | 9 | 120 | 70 | 84 | 20 | 5.8 | 8.7 | 6 |
| BZ02CA903Z_B | 12 | 90 | 90 | 108 | 20 | 7.4 | 10.3 | 7.6 |

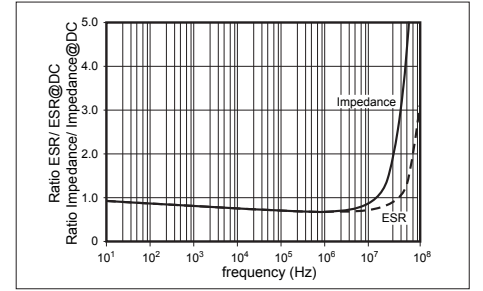
● BZ05/ BZ25 case size

| AVX Part Number | Rated Voltage (V) | Cap (mF) | ESR (m@1kHz) | | Leakage Current (max. μA) | Height (mm/ max.) S-lead |
|-----------------|-------------------|----------|--------------|------|---------------------------|--------------------------|
| | | | typ. | max. | | |
| BZ254B223ZSB | 4 | 22 | 140 | 168 | 5 | 1.9 |
| BZ254B473ZSB | | 47 | 80 | 96 | 10 | 2.95 |
| BZ054B223Z_B | 4.5 | 22 | 170 | 204 | 5 | 2.1 |
| BZ055B153Z_B | | 15 | 250 | 300 | 5 | 2.7 |
| BZ055A333Z_B | | 33 | 250 | 300 | 5 | 3.5 |
| BZ055B333Z_B | 5.5 | 33 | 125 | 150 | 10 | 4.8 |
| BZ055A683Z_B | | 68 | 125 | 150 | 10 | 6.1 |
| BZ05CA103Z_B | | 10 | 500 | 600 | 5 | 6.5 |
| BZ05FB682ZSB | 15 | 6.8 | 600 | 700 | 10 | 4.8 |

Typical Characteristics Over Temperature Range:

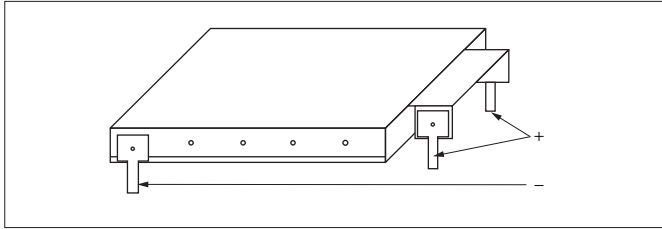


Impedance and ESR Versus Frequency

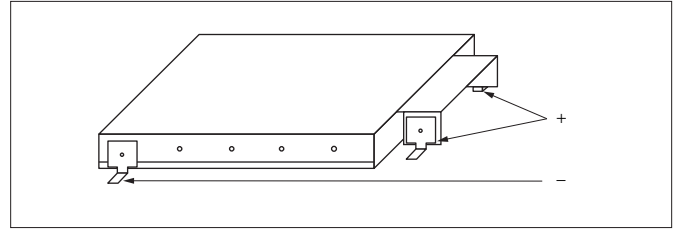


Lead Types

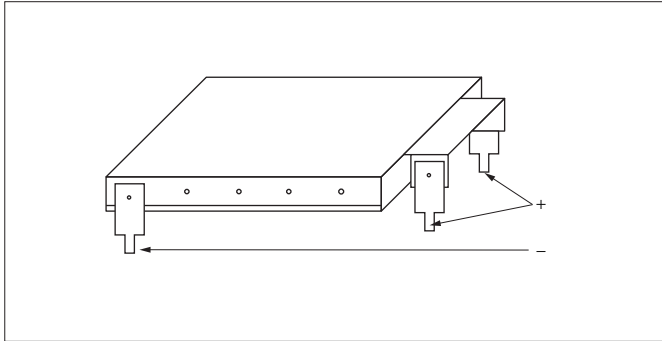
- A Lead (Through - Hole)



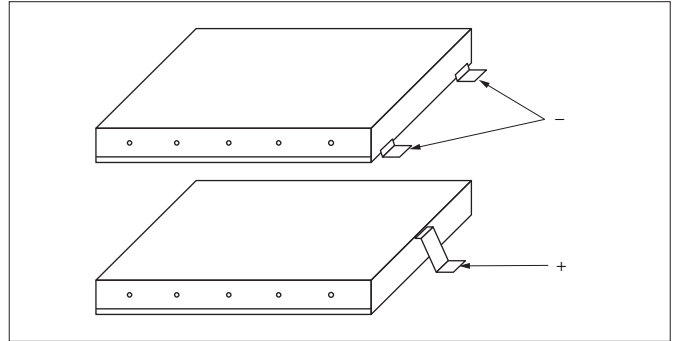
- L Lead (Surface Mount)



- H Lead (Extended Stand - Off)

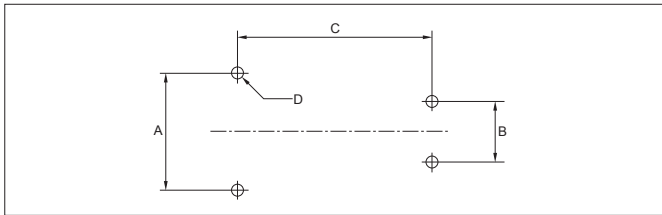


- S Lead (Surface Mount)



Recommended Footprint Dimensions

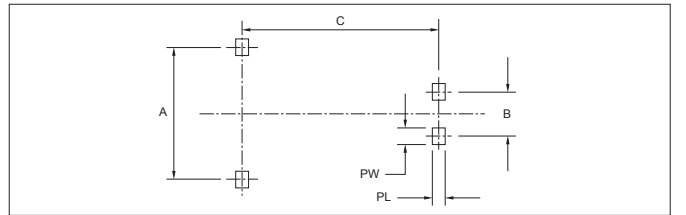
- A Lead



Pad dimensions: mm

| Case | A | B | C | D |
|------------|-------|-------|-------|------|
| | ±0.05 | ±0.05 | ±0.05 | ±0.1 |
| BZ01 | 17.25 | 8.9 | 28 | φ1.4 |
| BZ02/ BZ12 | 30.25 | 8.9 | 48 | φ1.4 |

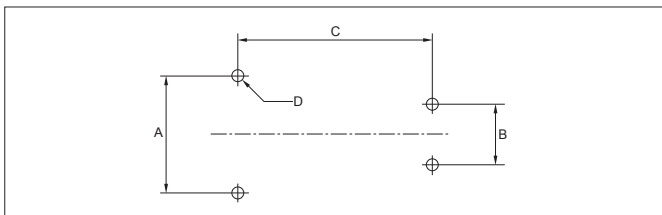
- L Lead



Pad dimensions: mm

| Case | A | B | C | PL | PW |
|------------|------|------|------|------|------|
| | ±0.1 | ±0.1 | ±0.1 | ±0.2 | ±0.2 |
| BZ01/ BZ11 | 19.2 | 10.8 | 28 | 3.2 | 3.7 |
| BZ02 | 32.2 | 10.8 | 48 | 3.2 | 3.7 |

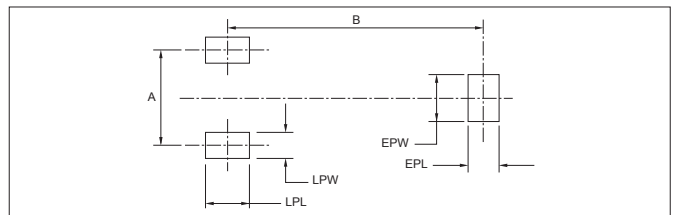
- H Lead



Pad dimensions: mm

| Case | A | B | C | D |
|------|-------|-------|-------|------|
| | ±0.05 | ±0.05 | ±0.05 | ±0.1 |
| BZ01 | 17.25 | 8.9 | 28 | φ1.4 |
| BZ02 | 30.25 | 8.9 | 48 | φ1.4 |

- S Lead



Pad dimensions: mm

| Case | A | B | EPL | EPW | LPL | LPW |
|------------|------|------|------|------|------|------|
| | ±0.1 | ±0.1 | ±0.1 | ±0.1 | ±0.1 | ±0.1 |
| BZ01/ BZ11 | 13 | 35.1 | 4.5 | 6 | 5.8 | 3.5 |
| BZ05/ BZ25 | 10 | 25 | 3 | 4.5 | 2.9 | 4.5 |