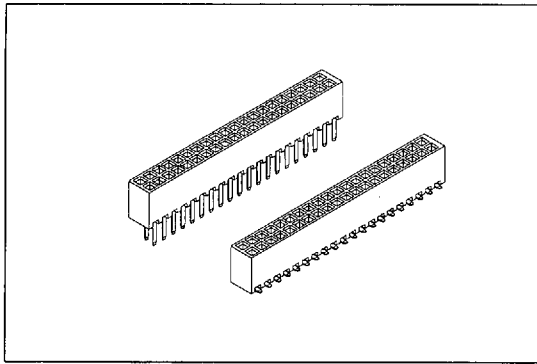


2242 SERIES

P.C.B. SOCKET 1.27mm X 1.27mm (0.050" X 0.050")



Features:

- * Choice of through-hole and surface mount.
- * Low profile 4.57mm (0.180").
- * Mates with 0.46mm (0.018") square pin.
- * Choice of two different dip length.

Mates with: 2215, 2216.

Material:

Housing: High temperature housing withstands IR and VPR soldering methods.

Contacts: Phosphor Bronze.

Plating: Gold plated: 5 μ " over 50 μ " nickel.
Tin plated: 150 μ " over 70 μ " nickel.

Electrical Characteristics:

Current Rating: 1 AMP

Insulator Resistance: 5000M Ω min. at DC 500V

Contact Resistance: 20m Ω max. at DC 100mA

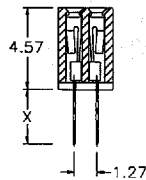
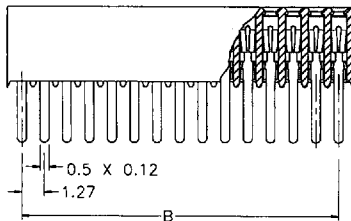
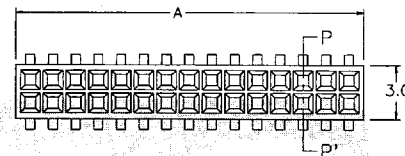
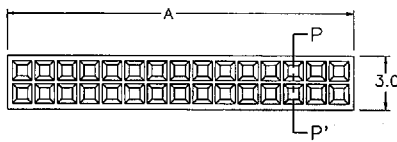
Operating Temperature: -65°C ~ +125°C

Max Processing Temperature: 230°C for 30 to 60 seconds.

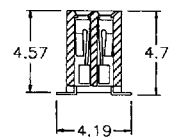
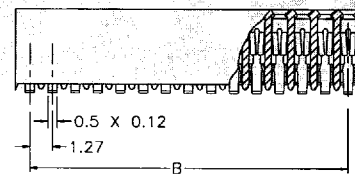
Mechanical Characteristics:

Insertion Force: 140g avg. (0.46mm dia. pin)

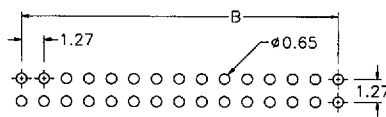
Withdrawal Force: 114g avg. (0.46mm dia. pin)



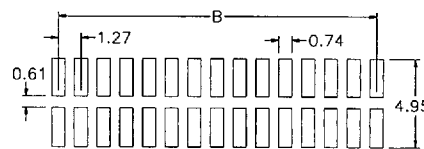
Section P-P'
DIP TYPE



Section P-P'
S.M.D TYPE



P.C. Board Layout



P.C. Board Layout

X	1	2
Length	3.05	1.91
Position	6 Thru 100	
Dimension		
A	1.27 X No. of Positions	
B	1.27 X No. of Positions - 1.27	

Ordering information

2242-2 X 50 G S 1
 Series Double Row No. of Pin Per Row G: Gold Plated S: Straight *1: 3.05mm
 C: Selective Gold Plated D: Surface Mount *2: 1.91mm

*Only apply to Straight dip type.