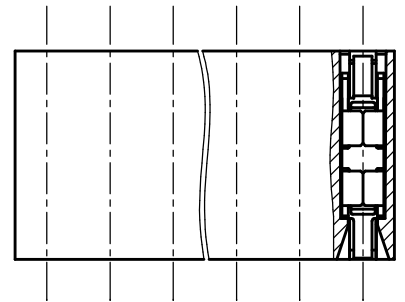


Tous droits réservés. Reproduction ou communication sans l'autorisation écrite de FCI Electronics S.A. est formellement interdite.

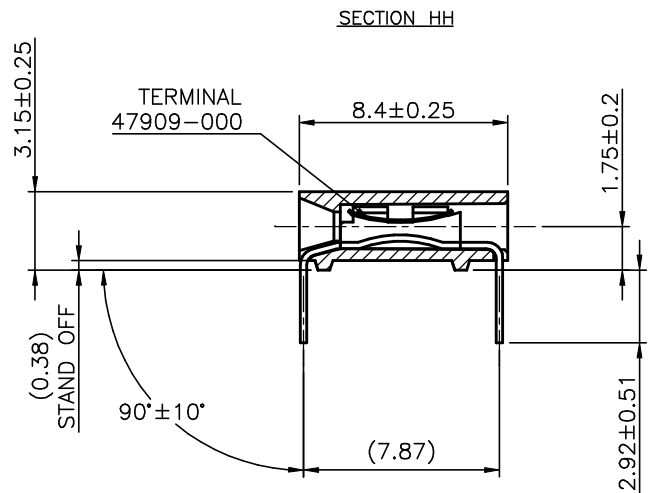
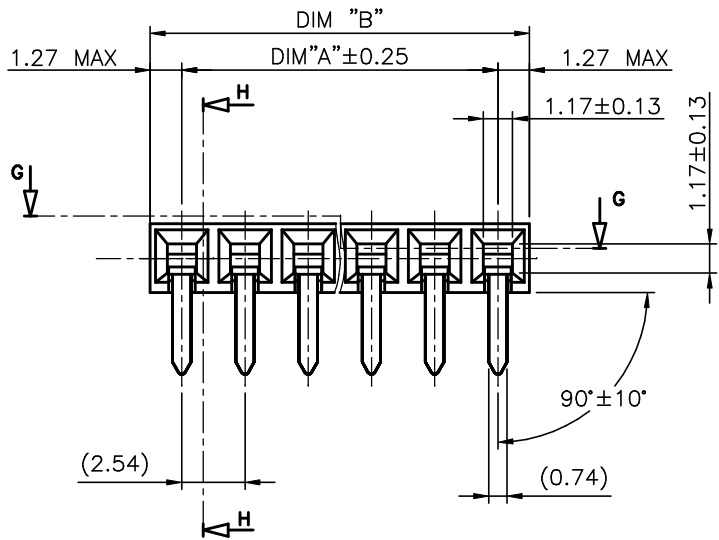
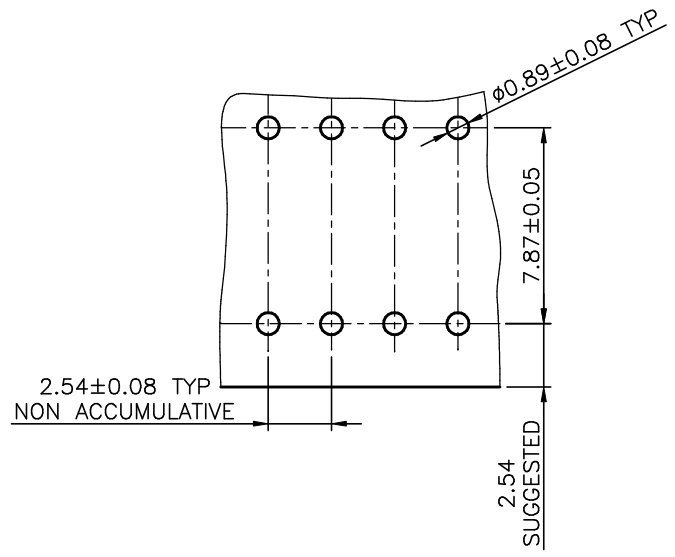
All rights reserved. Reproduction or communication without the written permission of FCI Electronics S.A. is expressly prohibited.



1 | 2 | 3 | 4 | 5 | 6



SECTION GG



mat'l. code SEE SHEET 2				tolerances unless otherwise specified		CUSTOMER COPY		ELECTRONICS	
A F03065 DLE 03.03.25				±0.13				www.fciconnect.com	
ltr	ecn no	dr	date	linear	angles	projection	title		
					±2°		HORIZONTAL SR		
				dr	DLE	03.03.24	product family		code
				engr	P NIZZI	03.03.24	BERGCON		213
				chr	JF NOTTEAU	03.03.24	size		sheet
				app	P.NZ	03.03.24	A3 77332		1 of 2
sheet	revision	A	A			scale			
index	sheet	1	2			5:1			

1 | 2 | 3 | 4 | 5 | 6

Tous droits réservés. Toute réimpression ou reproduction non autorisée sans la permission écrite de la FCI est formellement interdite.
 All rights reserved. Any reprinting or unauthorized reproduction without the written permission of FCI is expressly prohibited.

All rights reserved. Any reprinting or unauthorized reproduction without the written permission of FCI is expressly prohibited.
 Property of FCI Electronics S.A.



PRODUCT NUMBER	NUMBER OF POS.	DIM"A"	DIM"B"
77332-004	1 x 04	7.62	10.16
77332-006	1 x 06	12.70	15.24
77332-008	1 x 08	17.78	20.32
77332-010	1 x 10	22.86	25.40
77332-012	1 x 12	27.94	30.48
77332-014	1 x 14	33.02	35.56
77332-016	1 x 16	38.10	40.64
77332-018	1 x 18	43.18	45.72
77332-020	1 x 20	48.26	50.80
77332-022	1 x 22	53.34	55.88
77332-024	1 x 24	58.42	60.96
77332-026	1 x 26	63.50	66.04
77332-028	1 x 28	68.58	71.12
77332-030	1 x 30	73.66	76.20

NOTES :

- 1 - HOUSING MATERIAL:THERMOPLASTIC POLYESTER
30% GLASFILLED UL-94-VO COLOUR BLACK .
- 2 - TERMINAL MATERIAL
BODY: BRASS ASTM B36 ALLOY C26000-H02
SPRING: BE-CU ALLOY C17200 HEAT TREATED .
SPRINGTHICKNESS 0.09mm

BODY PLATING: 1.27 µm Au OVER 1.27 µm Ni
SPRING PLATING: Au FLASH
- 3 - APPLICATION INFORMATION:
ALL MATING PINS TO BE 0.64 SQUARE ON TRUE CENTER OF GIVEN
TERMINAL SPACINGS WITHIN 0.38 ø
SUGGESTED MATING PINS LENGTH 8.89±0.51
THICKNESS P.C. BOARD INCLUDING METAL FOIL 1.6±0.2 (NON PLATED HOLES)

mat'l. code		tolerances unless otherwise specified		CUSTOMER COPY		ELECTRONICS www.fciconnect.com	
ltr	ecn no	dr	date	linear	projection	title	
A	F03065	DLE	03.03.25			HORIZONTAL SR CARD CONNECTOR	
				angles	 mm	product family	code
				dr		BERGCON	213
				engr	scale	size	sheet
				P NIZZI		A3	2 of -
				chr	N/A	77332	
				JF NOTTEAU			
				appd			
				P.NZ			
sheet index	revision sheet						