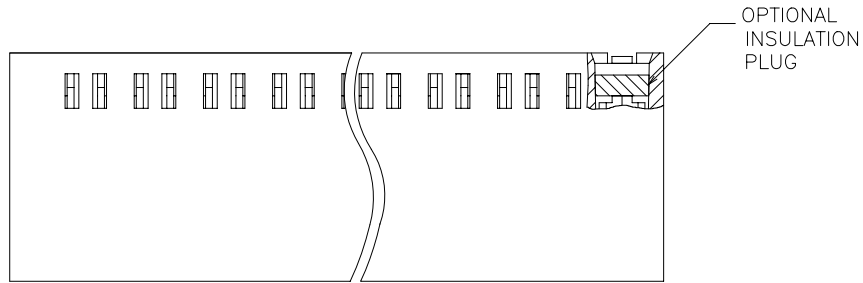
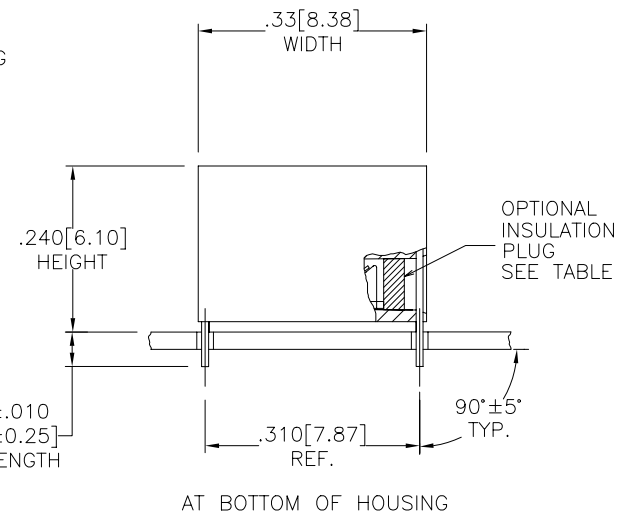
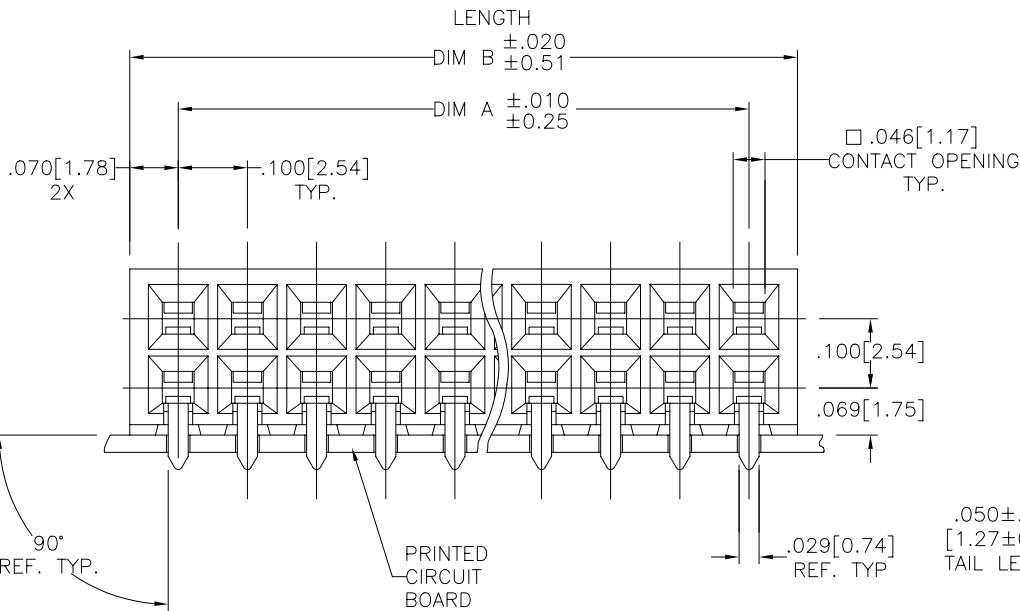


PRODUCT NO.  
SEE TABLE



OPTIONAL  
INSULATION  
PLUG



FCI  
FCIconnect.com

Copyright FCI

mat'l. code		surface ISO 1302 <input checked="" type="checkbox"/>		tolerance ISO 406 ISO 1101		projection 		product family CARD CONN	
A	ecn no	dr	date	tolerances unless otherwise specified				title	
B	v70467	JGS	3/20/90	angles	linear	INCH/MM		2 x.100 HORIZ. CARD	
C	v02386	RGD	10/14/97	$0^\circ \pm 2^\circ$		scale 4:1		CONN. .050 LEG 30 Au	
D	M05-0181	AZ	10/06/00					dwg no	
E	M06-0117	MHT	8/22/05	dr	J. SHREINER	3/20/90		sheet 1 of 6 size	
		AEA	06/27/06	enfr	M. HAHN	3/20/90		67943	
				chr	M. HAHN	3/20/90		A3	
				appd	M. HAHN	3/20/90		type Product Customer Drawing	
sheet index	revision sheet	E	E	E	E	E	E	E	E
		1	2	3	4	5	6		

PRODUCT NO.  
SEE TABLE

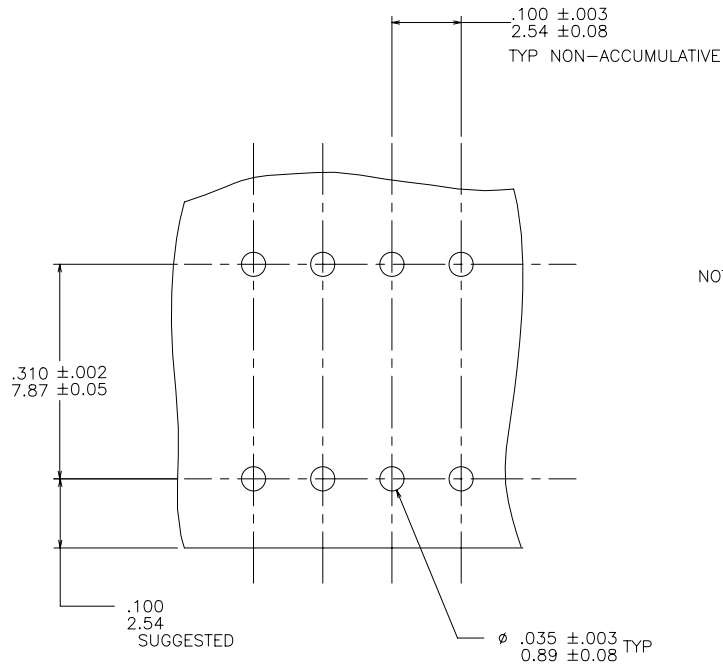


FIGURE 1

NOTES.

1. HOUSING MATERIAL:  
FILLED HIGH TEMPERATURE NYLON, COLOR BLACK
2. TERMINAL MATERIAL:  
BODY. BRASS .010/0.25 THICK.  
SPRING. BE-CU. HEAT TREATED  
BODY PLATING.  
30 MICROINCH GOLD/0.76 MICRON.  
OVER 50 MICROINCH NICKEL / 1.27 MICRON  
IN CONTACT AREA  
SPRING PLATING. GOLD FLASH
3. MARK "FCI" FCI PART NUMBER AND DATE CODE  
PARTS 1 X 8 OR LESS HAVE THIS INFORMATION  
ON TUBE LABEL INSTEAD OF HOUSING.
4. APPLICATION INFORMATION.  
A. RECOMMENDED MOUNTING HOLE PATTERN IS SHOWN IN FIG."1"  
B. ALL MATING PINS TO BE .025/0.64 SQUARE ON TRUE CENTER OF GIVEN TERMINAL SPACINGS WITHIN .015/0.38 DIA.
- ⑤ ADD "LF" SUFFIX AT THE END OF PART NUMBER FOR LEAD FREE OPTION.
- ⑥ THESE PRODUCT MEETS EUROPEAN UNION DIRECTIVES AND OTHER COUNTRY REGULATIONS AS DESCRIBED IN GS-22-008
7. THIS PART WILL WITHSTAND EXPOSURE TO 260°C PEAK TEMPERATURE FOR 20 SECONDS IN A WAVE SOLDER, INFRA-RED OR VAPOR PHASE SOLDER PROCESS.



FCIconnect.com

Copyright FCI

mat'l. code		surface ISO 1302 ✓		tolerance ISO 406 ISO 1101		projection ⊕		product family CARD CONN	
ltr	ecn	no	dr	date		tolerances unless otherwise specified		title	
E						angles	linear	2 x.100 HORIZ. CARD CONN. .050 LEG 30 Au	
						0°±2'	.xx ±.01/.3 .xxx ±.005/.13 .xxxx ±.0020/.051	INCH/MM scale 4:1	
						dr	J. SHREINER	3/20/90	
						enr	M. HAHN	3/20/90	
						chr	M. HAHN	3/20/90	
						appd	M. HAHN	3/20/90	
sheet index		revision sheet						FCI	
								dwg no 67943	
								sheet 2 of 6 size A3	
								type Product Customer Drawing	

form: A3

PRODUCT NO.	NO. OF POS.	DIM. A	DIM. B	INSULATION PLUG	LEAD FREE OPTION
67943-001		UNASSIGNED			NOTE 5,6
-002	2X2	.100/2.54	.240/6.10	NO	UNASSIGNED
-003	2X3	.200/5.08	.340/8.64		
-004	2X4	.300/7.62	.440/11.18		
-005	2X5	.400/10.16	.540/13.72		
-006	2X6	.500/12.70	.640/16.26		
-007	2X7	.600/15.24	.740/18.80		
-008	2X8	.700/17.78	.840/21.34		
-009	2X9	.800/20.32	.940/23.88		
-010	2X10	.900/22.86	1.040/26.42		
-011	2X11	1.00/25.40	1.140/28.96		
-012	2X12	1.10/27.94	1.240/31.50		
-013	2X13	1.20/30.48	1.340/34.04		
-014	2X14	1.30/33.02	1.440/36.58		
-015	2X15	1.40/35.56	1.540/39.12		
-016	2X16	1.50/38.10	1.640/41.66		
-017	2X17	1.60/40.64	1.740/44.20		
-018	2X18	1.70/43.18	1.840/46.74		
-019	2X19	1.80/45.72	1.940/49.28		
-020	2X20	1.90/48.26	2.040/51.82		
-021	2X21	2.00/50.80	2.140/54.36		
-022	2X22	2.10/53.34	2.240/56.90		
-023	2X23	2.20/55.88	2.340/59.44		
-024	2X24	2.30/58.42	2.440/61.98		
-025	2X25	2.40/60.96	2.540/64.52		
-026	2X26	2.50/63.50	2.640/67.06		
-027	2X27	2.60/66.04	2.740/69.60		
-028	2X28	2.70/68.58	2.840/72.14		
-029	2X29	2.80/71.12	2.940/74.68		
-030	2X30	2.90/73.66	3.040/77.22		
-031	2X31	3.00/76.20	3.140/79.76		
-032	2X32	3.10/78.74	3.240/82.30		
-033	2X33	3.20/81.28	3.340/84.84		
-034	2X34	3.30/83.82	3.440/87.38		
-035	2X35	3.40/86.36	3.540/89.92		
-036	2X36	3.50/88.90	3.640/92.46		
-037	2X37	3.60/91.44	3.740/95.00		
-038	2X38	3.70/93.98	3.840/97.54		
-039	2X39	3.80/96.52	3.940/100.08		
67943-040	2X40	3.90/99.06	4.040/102.62	NO	



Copyright FCI

mat'l. code		surface ISO 1302 <input checked="" type="checkbox"/>		tolerance ISO 406 ISO 1101		projection 		product family CARD CONN	
ltr	ecn	no	dr	date		tolerances unless otherwise specified		title	
E						.xx ±.01/.3 .xxx ±.005/.13 .xxxx ±.0020/.051		2 x.100 HORIZ. CARD CONN. .050 LEG 30 Au	
				0°±2'		linear		INCH/MM	
								scale 4:1	
				dr		J. SHREINER 3/20/90		dwg no	
				enfr		M. HAHN 3/20/90		sheet 3 of 6 size	
				chr		M. HAHN 3/20/90		67943 A3	
				appd		M. HAHN 3/20/90		type Product Customer Drawing	
sheet index	revision sheet								



PRODUCT NUMBER	NO. OF POS.	DIM. A	DIM. B	INSULATION PLUG	LEAD FREE OPTION
67943-041	2X41	4.00/101.6	4.14/105.1	NO	NOTE 5,6
-042	2X42	4.10/104.1	4.24/107.7		
-043	2X43	4.20/106.6	4.34/110.2		
-044	2X44	4.30/109.2	4.44/112.7		
-045	2X45	4.40/111.7	4.54/115.3		
-046	2X46	4.50/114.3	4.64/117.8		
-047	2X47	4.60/116.8	4.74/120.4		
-048	2X48	4.70/119.3	4.84/122.9		
-049	2X49	4.80/121.9	4.94/125.4		
-050	2X50	4.90/124.4	5.04/128.0		
-051	2X51	5.00/127.0	5.14/130.5		
-052	2X52	5.10/129.5	5.24/133.1		
-053	2X53	5.20/132.0	5.34/135.6		
-054	2X54	5.30/134.6	5.44/138.1		
-055	2X55	5.40/137.1	5.54/140.7		
-056	2X56	5.50/139.7	5.64/143.2		
-057	2X57	5.60/142.2	5.74/145.8		
-058	2X58	5.70/144.7	5.84/148.3		
-059	2X59	5.80/147.3	5.94/150.8		
-060	2X60	5.90/149.8	6.04/153.4		
-061	2X61	6.00/152.4	6.14/155.9		
-062	2X62	6.10/154.9	6.24/158.5		
-063	2X63	6.20/157.4	6.34/161.0		
-064	2X64	6.30/160.0	6.44/163.5		
67943-065	2X65	6.40/162.5	6.54/166.1	NO	NOTE 5,6



FCIconnect.com

Copyright FCI

mat'l. code		surface ISO 1302 ✓		tolerance ISO 406 ISO 1101		projection		product family CARD CONN	
ltr	ecn	no	dr	date		tolerances unless otherwise specified		title	
E						.xx ±.01/.3 .xxx ±.005/.13 .xxxx ±.0020/.051		INCH/MM	
				0'±2'		linear		scale 4:1	
				dr J. SHREINER		3/20/90		dwg no	
				enr M. HAHN		3/20/90		sheet 4 of 6 size	
				chr M. HAHN		3/20/90		67943 A3	
				appd M. HAHN		3/20/90		type Product Customer Drawing	
sheet index	revision sheet								



form: A3

PRODUCT NUMBER	NO. OF POS.	DIM. A	DIM. B	INSULATION PLUG	LEAD FREE OPTION
67943-501		UNASSIGNED			NOTE 5,6
-502	2X2	.10/2.5	.24/6.10	YES	
-503	2X3	.20/5.0	.34/8.6		
-504	2X4	.30/7.6	.44/11.1		
-505	2X5	.40/10.1	.54/13.7		
-506	2X6	.50/12.7	.64/16.2		
-507	2X7	.60/15.2	.74/18.8		
-508	2X8	.70/17.7	.84/21.3		
-509	2X9	.80/20.3	.94/23.8		
-510	2X10	.90/22.8	1.04/26.4		
-511	2X11	1.00/25.4	1.14/28.9		
-512	2X12	1.10/27.9	1.24/31.5		
-513	2X13	1.20/30.4	1.34/34.0		
-514	2X14	1.30/33.0	1.44/36.5		
-515	2X15	1.40/35.5	1.54/39.1		
-516	2X16	1.50/38.1	1.64/41.6		
-517	2X17	1.60/40.6	1.74/44.2		
-518	2X18	1.70/43.1	1.84/46.7		
-519	2X19	1.80/45.7	1.94/49.2		
-520	2X20	1.90/48.2	2.04/51.8		
-502	2X21	2.00/50.8	2.14/54.3		
-503	2X22	2.10/53.3	2.24/56.9		
-504	2X23	2.20/55.8	2.34/59.4		
-505	2X24	2.30/58.4	2.44/61.9		
-506	2X25	2.40/60.9	2.54/64.5		
-507	2X26	2.50/63.5	2.64/67.0		
-508	2X27	2.60/66.0	2.74/69.6		
-509	2X28	2.70/68.5	2.84/72.1		
-510	2X29	2.80/71.1	2.94/74.6		
-511	2X30	2.90/73.6	3.04/77.2		
-512	2X31	3.00/76.2	3.14/79.7		
-513	2X32	3.10/78.7	3.24/82.3		
-514	2X33	3.20/81.2	3.34/84.8		
-515	2X34	3.30/83.8	3.44/87.3		
-516	2X35	3.40/86.3	3.54/89.9		
-517	2X36	3.50/88.9	3.64/92.4		
-518	2X37	3.60/91.4	3.74/95.0		
-519	2X38	3.70/93.9	3.84/97.5		
-520	2X39	3.80/96.5	3.94/100.0		
67943-520	2X40	3.90/99.0	4.04/102.6	YES	NOTE 5,6

UNASSIGNED



Copyright FCI

mat'l. code		surface ISO 1302 <input checked="" type="checkbox"/>	tolerance ISO 406 ISO 1101	projection 	product family CARD CONN
ltr	ecn no	dr	date	tolerances unless otherwise specified	title
E				angles linear .xx ±.01/.3 .xxx ±.005/.13 .xxxx ±.0020/.051	2 x.100 HORIZ. CARD CONN. .050 LEG 30 Au
				0'±2'	INCH/MM scale 4:1
		dr	J. SHREINER	3/20/90	dwg no
		enrg	M. HAHN	3/20/90	sheet 5 of 6 size
		chr	M. HAHN	3/20/90	67943 A3
		appd	M. HAHN	3/20/90	type Product Customer Drawing
sheet index	revision sheet				

form: A3

PRODUCT NUMBER	NO. OF POS.	DIM. A	DIM. B	INSULATION PLUG	LEAD FREE OPTION
67943-541	2X41	4.00/101.6	.120/3.05	YES	NOTE 5,6
-542	2X42	4.10/104.1	.220/5.59		
-543	2X43	4.20/106.6	.320/8.13		
-544	2X44	4.30/109.2	.420/10.67		
-545	2X45	4.40/111.7	.520/13.21		
-546	2X46	4.50/114.3	.620/15.75		
-547	2X47	4.60/116.8	.720/18.27		
-548	2X48	4.70/119.3	.820/20.83		
-549	2X49	4.80/121.9	.920/23.37		
-550	2X50	4.90/124.4	1.020/25.91		
-551	2X51	5.00/127.0	1.120/28.45		
-552	2X52	5.10/129.5	1.220/30.99		
-553	2X53	5.20/132.0	1.320/33.53		
-554	2X54	5.30/134.6	1.420/36.07		
-555	2X55	5.40/137.1	1.520/38.61		
-556	2X56	5.50/139.7	1.620/41.15		
-557	2X57	5.60/142.2	1.720/43.69		
-558	2X58	5.70/144.7	1.820/46.23		
-559	2X59	5.80/147.3	1.920/48.77		
-560	2X60	5.90/149.8	2.020/51.31		
-561	2X61	6.00/152.4	2.120/53.85		
-562	2X62	6.10/154.9	2.220/56.39		
-563	2X63	6.20/157.4	2.320/58.93		
-564	2X64	6.30/160.0	2.420/61.47		
-565	2X65	6.40/162.5	2.520/64.01		
-908	2X8	.700/17.7	2.620/66.55		
67943-912	2X12	1.10/27.9	2.720/69.09	YES	NOTE 5,6



FCIconnect.com

Copyright FCI

mat'l. code		surface ISO 1302 <input checked="" type="checkbox"/>		tolerance ISO 406 ISO 1101		projection 		product family CARD CONN	
ltr	ecn	no	dr	date		tolerances unless otherwise specified		title	
E						linear .xx ±.01/.3 .xxx ±.005/.13 .xxxx ±.0020/.051		INCH/MM	
						0±2'		scale 4:1	
		dr		J. SHREINER 3/20/90				dwg no	
		enfr		M. HAHN 3/20/90				sheet 6 of 6 size	
		chr		M. HAHN 3/20/90				67943 A3	
		appd		M. HAHN 3/20/90				type Product Customer Drawing	
sheet index	revision sheet								

