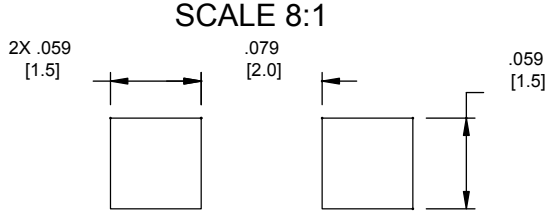
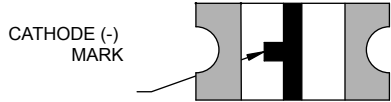
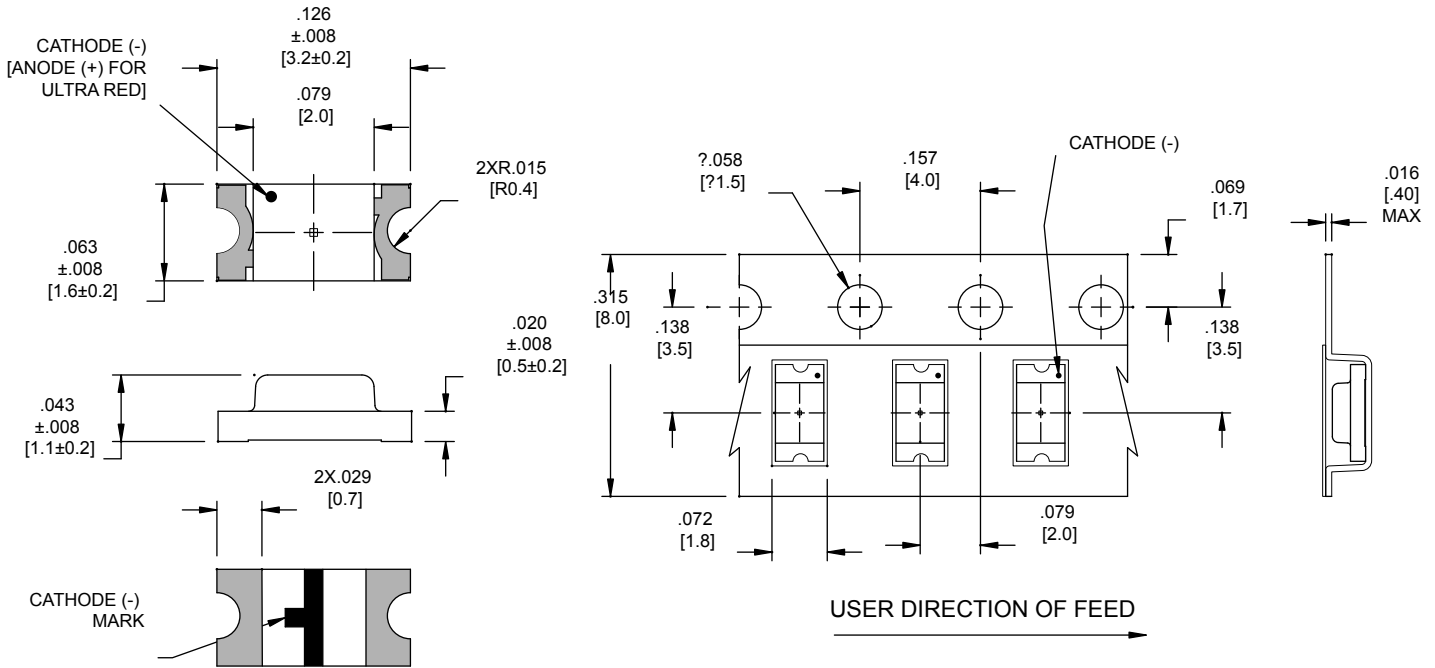


LTR	REVISION	DATE	APPD
G	091206-PL02: REMOVED PART# SML10G4H-TR	09-12-06	GP

Actual Size



1206 PROFILE



SUGGESTED PAD LAYOUT

NOTES:

- 7 INCH REEL - 3000 PIECES PER REEL
- ALL DIMS ARE IN INCHES (MILLIMETERS).
- TOLERANCE IS $\pm 0.10"$ ($\pm 0.25\text{mm}$) UNLESS OTHERWISE SPECIFIED.
- SPECIFICATIONS ARE SUBJECT TO CHANGE WITHOUT NOTICE.
- LEADS TO BE SOLDERABLE AND CAPABLE OF MEETING THE SOLDERABILITY REQUIREMENTS OF MIL-STD-202, METHOD 208.
- MANUFACTURE DATE SHALL NOT BE OLDER THAN 26 WEEKS.
- TAPE AND REEL TO BE IN ACCORDANCE WITH STANDARD EIA-481-A

LEDTRONICS PART NO.	L.E.D. RADIATION COLOR	L.E.D. APPEARANCE	ABSOLUTE MAXIMUM RATINGS (Ta=25°C)					ELECTRO-OPTICAL CHARACTERISTICS (Ta=25°C)						
			Pd mW	Ifp mA	If mA	Vr V	Topt (°C)	If mA	Iv mcd typ	Vf=V typ/max	VIEW ANGLE 2θ1/2	Ir max μA	Δλ nm	λ _{Peak} nm
SML10R6H-TR	ULTRA RED	CLEAR WATER	60	150	30	5	-40 TO +85	20	15.0	1.8/2.6	120	100	20	660
SML10R4H-TR	HI-EFF RED	CLEAR WATER	100	150	30	5	-40 TO +85	20	8.0	2.0/2.6	120	100	45	640
SML10O4H-TR	ORANGE	CLEAR WATER	80	150	30	5	-40 TO +85	20	2.4/5.0	2.0/2.6	120	100	35	610
SML10Y4H-TR	YELLOW	CLEAR WATER	80	150	30	5	-40 TO +85	20	10	2.2/2.6	120	100	15	583
SML10G5H-TR	HI-EFF GREEN	CLEAR WATER	100	150	30	5	-40 TO +85	20	12	2.0/2.6	120	100	30	568
SML10PG4H-TR	PURE GREEN	CLEAR WATER	80	150	30	5	-40 TO +85	20	1.5	2.2/2.6	120	100	25	555
SML10UB500H-TR	ULTRA BLUE	CLEAR WATER	150	150	30	5	-40 TO +85	20	15	3.5/4.0	120	100	65	430

Tstg: -40°C TO +100°C

PREHEATING TEMP: 100°C TO 150°C WITHIN 2 MINUTES

SOLDERING TEMP: 240°C TO 250°C WITHIN 5 SECONDS

-PROPRIETARY-
 This document contains Proprietary information of LEDTRONICS, INC. It may not be copied, used or disclosed for any purpose without the prior express written consent of LEDTRONICS, INC.
 .XXX ± .010 TOLERANCE PER ANSI-Y14.5
 XX ± .025 (UNLESS OTHERWISE STATED)
 ANGLES ± 0°, 30'
 FRACT. ± 1/32

TITLE					
SML10XXH-TR					
DWG NO		SCALE		SHEET	
DSTR0048		4:1		1 OF 1	
DATE		CHK BY		CUSTOMER	
12-05-98		PL 09-12-06			
CODE IDENT NO.	DWG BY	QA	MFG		
8Z410	SMA				