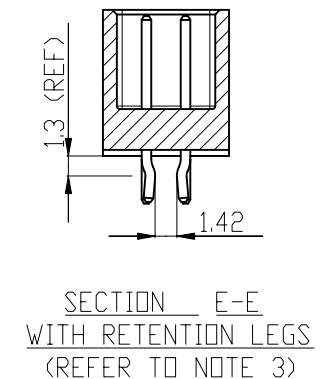
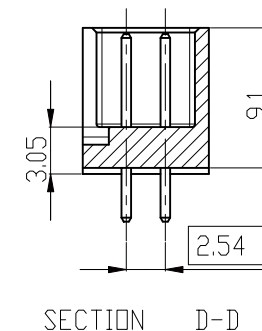
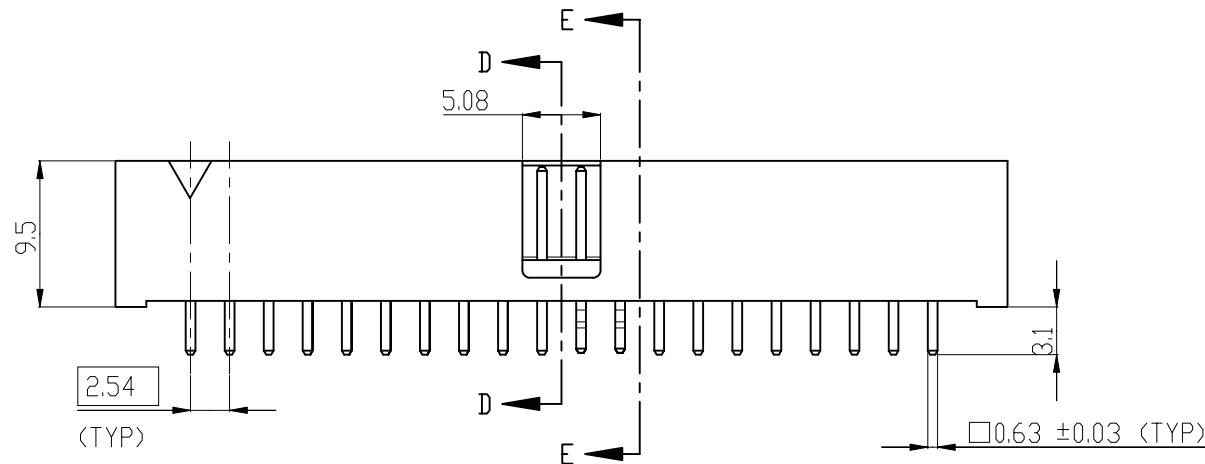
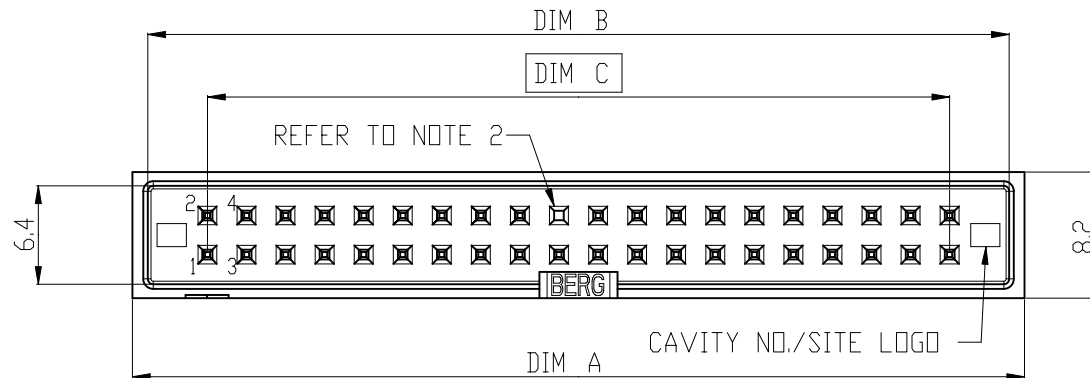




PRODUCT NO
SEE TABLE

REV	DESCRIPTION	REV'D BY	DATE
D	ECR S60323	SPYKE	06DEC1996
E	ECR S70303	SPYKE	23OCT1997
F	ECR S70354	SPYKE	15DEC1997
G	ECR S80249	SPYKE	10NOV1998
H	ECR N10128	MING CHENG	17JUL2001
J	ECR N04-0037	ZHENG CAI TAO	12AUG2004
K	ECR N05-0026	ZHENG CAI TAO	1FEB2005



ALL RIGHT RESERVED. REPRODUCTION OR ISSUE TO THIRD PARTIES IN ANY FORM WHATEVER IS NOT PERMITTED WITHOUT WRITTEN AUTHORITY FROM THE PROPRIETOR. PROPERTY OF F C I. COPYRIGHT F C I.

CUSTOMER COPY			 THIRD ANGLE PROJECTION			 AFCI				
DO NOT SCALE DRAWING			DIMENSIONAL LIMITS APPLY AFTER PLATING (IF SPECIFIED)			DESCRIPTION				
GENERAL TOLERANCE						QUICKIE STRIAIGHT 4-WALL SLIMLINE HEADER				
MILLIMETER	INCH	ANGLE	DRAWN	NAME	DATE	SCALE	SIZE	DRAWING NO.	REV	SHEET
X.X ±0.25	.XX ±0.010	±3°	CHECKED	Zhengcai Tao	1FEB 05	2:1	A4	69064	K	1 OF 3
X.XX ±0.13	.XXX ±0.005		APPROVED	Jason Zhou	1FEB 05					
X.XXX ±0.05	.XXXX ±0.002									

PDM: Rev:K

STATUS Released

Printed: Apr 12, 2011

4			3		2		1		
PRODUCT NO	POSITION	RETENTIVE	POST OMISSION	DIMENSION 'A'	DIMENSION 'B'	DIMENSION 'C'	PIN PLAT'G	<div>XXXXX-X XX X P</div> <div>ORIENTATION POST FEATURE (SEE DET:'A')</div> <div>STYLE TYPE</div> <div>NUMBER OF POSITION</div> <div>MATERIAL CODE</div> <div>BASE NUMBER</div> <div>NOTES: 1. HOUSING MATERIAL: REFER TO TABLE AS PER UL 94V-0 TERMINAL MATERIAL: COPPER ALLOY PLATING SPEC.: REFER TO TABLE 50u" MIN. NICKEL UNDER PLATE. 2. ELIMINATION OF PIN OPTION REFER TO TABLE FOR PIN POLARIZATION. 3. TWO PAIRS OF RETENTIVE LEGS WILL BE KINKED AT TAIL END APPROXIMATELY AT CENTER OF PRODUCT.</div>	
69064-X01	2 X 17	NO	PIN 03	50.4	48.4	40.64	15 u"GXT		
69064-X02	2 X 17	YES (SEE NOTE 3)	PIN 03	50.4	48.4	40.64	15 u"GXT		
69064-X03	2 X 20	NO	PIN 20	58.0	56.0	48.26	15 u"GXT		
69064-X04	2 X 20	YES (SEE NOTE 3)	PIN 20	58.0	56.0	48.26	15 u"GXT		
69064-X05	2 X 5	NO	PIN 10	19.9	18.0	10.16	15 u"GXT		
69064-X06	2 X 5	YES (SEE NOTE 3)	PIN 10	19.9	18.0	10.16	15 u"GXT		
69064-X07	2 X 10	NO	PIN 20	32.6	30.7	22.86	15 u"GXT		
69064-X08	2 X 10	YES (SEE NOTE 3)	PIN 20	32.6	30.7	22.86	15 u"GXT		
69064-X09	2 X 10	NO	NO	32.6	30.7	22.86	15 u"GXT		
69064-X10	2 X 8	NO	PIN 16	27.5	25.5	17.78	15 u"GXT		
69064-X11	2 X 8	YES (SEE NOTE 3)	PIN 16	27.5	25.5	17.78	15 u"GXT		
69064-X12	2 X 10	YES (SEE NOTE 3)	PIN 14	32.6	30.7	22.86	15 u"GXT		
69064-X13	2 X 17	YES (SEE NOTE 3)	NO	50.4	48.4	40.64	15 u"GXT		
69064-X14	2 X 17	YES (SEE NOTE 3)	PIN 20	50.4	48.4	40.64	15 u"GXT		
69064-X15	2 X 25	NO	NO	70.8	68.8	60.96	15 u"GXT		
69064-X16	2 X 25	YES (SEE NOTE 3)	NO	70.8	68.8	60.96	15 u"GXT		
69064-X17	2 X 25	NO	PIN 25	70.8	68.8	60.96	15 u"GXT		
69064-X18	2 X 17	NO	PIN 05	50.4	48.4	40.64	15 u"GXT		
69064-X19	2 X 17	YES (SEE NOTE 3)	PIN 05	50.4	48.4	40.64	15 u"GXT		
69064-X20	2 X 5	YES (SEE NOTE 3)	NO	19.9	18.0	10.16	15 u"GXT		
69064-X21	2 X 8	YES (SEE NOTE 3)	NO	27.5	25.5	17.78	15 u"GXT		
69064-X22	2 X 20	NO	PIN 25,27 &28	58.0	56.0	48.26	15 u"GXT		
69064-X23	2 X 20	NO	PIN 20	58.0	56.0	48.26	4 u"GOLD		
69064-X24	2 X 17	NO	PIN 05	50.4	48.4	40.64	4 u"GOLD		
PLASTIC MATERIAL:								<div>THIRD ANGLE PROJECTION</div> <div>DIMENSIONAL LIMITS APPLY AFTER PLATING (IF SPECIFIED)</div> <div>DESCRIPTION QUICKIE STRAIGHT 4-WALL SLIMLINE HEADER</div>	
CODE	TYPE	COLOR	REMARKS						
-0XX	PBT	BLACK							
-1XX	PCT	BLACK							
-2XX	PA46	BLACK	FOR LEAD FREE PROCESS						
ALL RIGHT RESERVED. REPRODUCTION OR ISSUE TO THIRD PARTIES IN ANY FORM WHATEVER IS NOT PERMITTED WITHOUT WRITTEN AUTHORITY FROM THE PROPRIETOR. PROPERTY OF F C I. COPYRIGHT F C I.								<div>CUSTOMER COPY</div> <div>DO NOT SCALE DRAWING</div> <div>GENERAL TOLERANCE</div> <div>MILLIMETERINCHANGLE</div> <div>X.X ±0.25 X.XX ±0.13 X.XXX±0.05</div> <div>.XX ±0.010 .XXX ±0.005 XXXX±0.008</div> <div>±3°</div> <div>THIRD ANGLE PROJECTION</div> <div>DIMENSIONAL LIMITS APPLY AFTER PLATING (IF SPECIFIED)</div> <div>NAMEDATE</div> <div>DRAWN Zhengcai Tao1 FEB 05</div> <div>CHECKED Zhengcai Tao1 FEB 05</div> <div>APPROVED Jason Zhou1 FEB 05</div> <div>SCALE2:1</div> <div>SIZEA4</div> <div>DRAWING NO.69064</div> <div>REV K</div> <div>SHEET2 of 3</div>	

4				3		2		1	
PRODUCT NO	POSITION	RETENTIVE	POST OMISSION	DIMENSION 'A'	DIMENSION 'B'	DIMENSION 'C'	PIN PLAT'G		
69064-201LF	2 X 17	NO	PIN 03	50.4	48.4	40.64	15 u"GXT		
69064-202LF	2 X 17	YES (SEE NOTE 3)	PIN 03	50.4	48.4	40.64	15 u"GXT		
69064-203LF	2 X 20	NO	PIN 20	58.0	56.0	48.26	15 u"GXT		
69064-204LF	2 X 20	YES (SEE NOTE 3)	PIN 20	58.0	56.0	48.26	15 u"GXT		
69064-205LF	2 X 5	NO	PIN 10	19.9	18.0	10.16	15 u"GXT		
69064-206LF	2 X 5	YES (SEE NOTE 3)	PIN 10	19.9	18.0	10.16	15 u"GXT		
69064-207LF	2 X 10	NO	PIN 20	32.6	30.7	22.86	15 u"GXT		
69064-208LF	2 X 10	YES (SEE NOTE 3)	PIN 20	32.6	30.7	22.86	15 u"GXT		
69064-209LF	2 X 10	NO	NO	32.6	30.7	22.86	15 u"GXT		
69064-210LF	2 X 8	NO	PIN 16	27.5	25.5	17.78	15 u"GXT		
69064-211LF	2 X 8	YES (SEE NOTE 3)	PIN 16	27.5	25.5	17.78	15 u"GXT		
69064-212LF	2 X 10	YES (SEE NOTE 3)	PIN 14	32.6	30.7	22.86	15 u"GXT		
69064-213LF	2 X 17	YES (SEE NOTE 3)	NO	50.4	48.4	40.64	15 u"GXT		
69064-214LF	2 X 17	YES (SEE NOTE 3)	PIN 20	50.4	48.4	40.64	15 u"GXT		
69064-215LF	2 X 25	NO	NO	70.8	68.8	60.96	15 u"GXT		
69064-216LF	2 X 25	YES (SEE NOTE 3)	NO	70.8	68.8	60.96	15 u"GXT		
69064-217LF	2 X 25	NO	PIN 25	70.8	68.8	60.96	15 u"GXT		
69064-218-LF	2 X 17	NO	PIN 05	50.4	48.4	40.64	15 u"GXT		
69064-219LF	2 X 17	YES (SEE NOTE 3)	PIN 05	50.4	48.4	40.64	15 u"GXT		
69064-220LF	2 X 5	YES (SEE NOTE 3)	NO	19.9	18.0	10.16	15 u"GXT		
69064-221LF	2 X 8	YES (SEE NOTE 3)	NO	27.5	25.5	17.78	15 u"GXT		
69064-222LF	2 X 20	NO	PIN 25,27 &28	58.0	56.0	48.26	15 u"GXT		
69064-223LF	2 X 20	NO	PIN 20	58.0	56.0	48.26	4 u"GOLD		
69064-224LF	2 X 17	NO	PIN 05	50.4	48.4	40.64	4 u"GOLD		

XXXXX-X XX LF X P

ORIENTATION POST FEATURE (SEE DET:'A')

STYLE TYPE

LEAD FREE PRODUCT

NUMBER OF POSITION

MATERIAL CODE

BASE NUMBER

NOTES:

1. HOUSING MATERIAL: REFER TO TABLE AS PER UL 94V-0
TERMINAL MATERIAL: COPPER ALLOY
PLATING SPEC.: REFER TO TABLE
50u" MIN. NICKEL UNDER PLATE.

2. ELIMINATION OF PIN OPTION REFER TO TABLE FOR PIN POLARIZATION.

3. TWO PAIRS OF RETENTIVE LEGS WILL BE KINKED AT TAIL END APPROXIMATELY AT CENTER OF PRODUCT.

PLASTIC MATERIAL:			
CODE	TYPE	COLOR	REMARKS
-0XX	PBT	BLACK	
-1XX	PCT	BLACK	
-2XX	PA46	BLACK	FOR LEAD FREE PROCESS

CUSTOMER COPY			THIRD ANGLE PROJECTION											
DO NOT SCALE DRAWING			DIMENSIONAL LIMITS APPLY AFTER PLATING (IF SPECIFIED)			DESCRIPTION								
GENERAL TOLERANCE						QUICKIE STRAIGHT 4-WALL SLIMLINE HEADER								
MILLIMETER		INCH	ANGLE		DRAWN	NAME	DATE	SCALE			SIZE	DRAWING NO.	REV	SHEET
X.X ±0.25		.XX ±0.010	±3°		CHECKED	Zhengcai Tao	1 FEB 05	2:1			A4	69064	K	3 of 3
X.XX ±0.13		.XXX ±0.005			APPROVED	Jason Zhou	1 FEB 05							
X.XXX±0.05		.XXX±0.002												

ALL RIGHT RESERVED. REPRODUCTION OR ISSUE TO THIRD PARTIES IN ANY FORM WHATEVER IS NOT PERMITTED WITHOUT WRITTEN AUTHORITY FROM THE PROPRIETOR. PROPERTY OF F C I. COPYRIGHT F C I.