



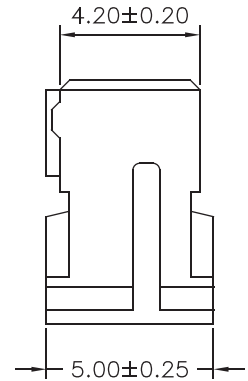
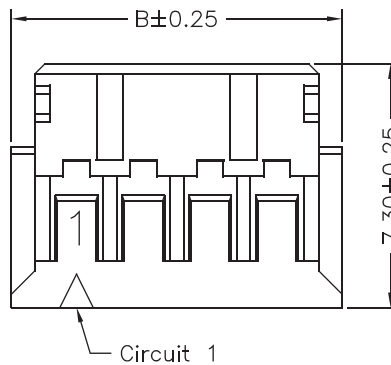
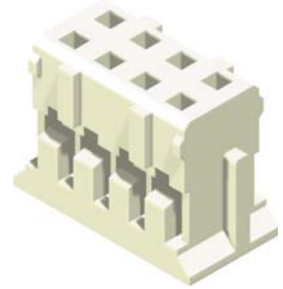
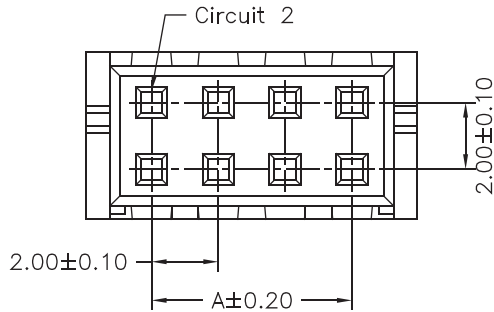
# CONNECTORS MANUFACTURER

## 2.0mm Housing

### Specifications

Current Rating: 3A AC,DC  
 Voltage Rating: 250V AC,DC  
 Temperature Range: -25°C to +85°C  
 Contact Resistance: 10mΩ Max  
 Insulation Resistance: 1000MΩ Min  
 Withstanding Voltage: 800V AC/minute  
 Material: Nylon 66, UL94V-0  
 \*Mates With 2004-T & 2004-T-A

Part No.	Dimensions	
	A	B
2004H-202W-L	2.00	5.90
2004H-203W-L	4.00	7.90
2004H-204W-L	6.00	9.90
2004H-205W-L	8.00	11.90
2004H-206W-L	10.00	13.90
2004H-207W-L	12.00	15.90
2004H-208W-L	14.00	17.90
2004H-209W-L	16.00	19.90
2004H-210W-L	18.00	21.90
2004H-211W-L	20.00	23.90
2004H-212W-L	22.00	25.90
2004H-213W-L	24.00	27.90
2004H-214W-L	26.00	29.90
2004H-215W-L	28.00	31.90
2004H-216W-L	30.00	33.90
2004H-217W-L	32.00	35.90
2004H-218W-L	34.00	37.90
2004H-219W-L	36.00	39.90
2004H-220W-L	38.00	41.90

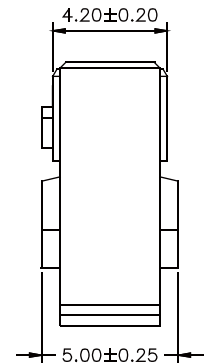
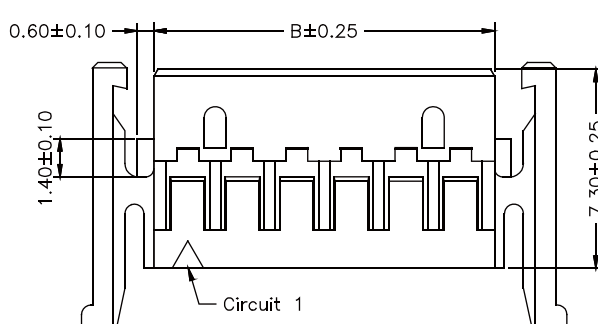
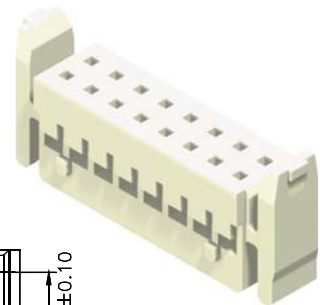
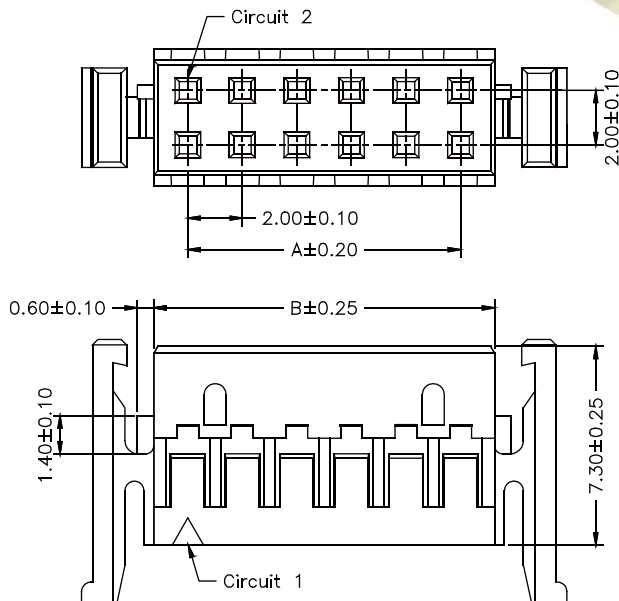


Part No.:2004H-2XXW-L

### Specifications

Current Rating: 3A AC,DC  
 Voltage Rating: 250V AC,DC  
 Temperature Range: -25°C to +85°C  
 Contact Resistance: 10mΩ Max  
 Insulation Resistance: 1000MΩ Min  
 Withstanding Voltage: 800V AC/minute  
 Material: Nylon 66, UL94V-0  
 \*Mates With 2004-T & 2004-T-A

Part No.	Dimensions	
	A	B
2004H-202TW1-L	2.00	6.00
2004H-203TW1-L	4.00	8.00
2004H-204TW1-L	6.00	10.00
2004H-205TW1-L	8.00	12.00
2004H-206TW1-L	10.00	14.00
2004H-207TW1-L	12.00	16.00
2004H-208TW1-L	14.00	18.00
2004H-209TW1-L	16.00	20.00
2004H-210TW1-L	18.00	22.00
2004H-211TW1-L	20.00	24.00
2004H-212TW1-L	22.00	26.00
2004H-213TW1-L	24.00	28.00
2004H-214TW1-L	26.00	30.00
2004H-215TW1-L	28.00	32.00
2004H-216TW1-L	30.00	34.00
2004H-217TW1-L	32.00	36.00
2004H-218TW1-L	34.00	38.00
2004H-219TW1-L	36.00	40.00
2004H-220TW1-L	38.00	42.00
2004H-221TW1-L	40.00	44.00
2004H-222TW1-L	42.00	46.00



Part No.:2004H-2XXW1-L

Housing wafer Terminal



ROHS