



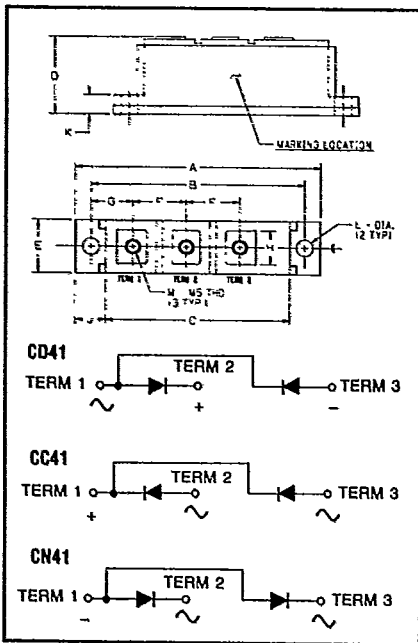
CD41 ___ 99

CC41 ___ 99

CN41 ___ 99

Powerex, Inc., Hills Street, Youngwood, Pennsylvania 15697 (412) 925-7272
 Powerex Europe, S.A., 428 Avenue G. Durand, BP107, 72003 Le Mans, France (43) 72.75.15

**Dual Diode
 POW-R-BLOK™ Modules
 100 Amperes/200-2400 Volts**

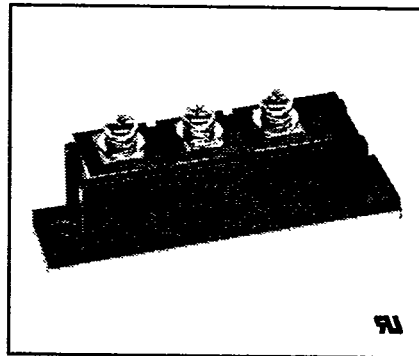


200-2400 Volts, CD41 ___ 99,
 CC41 ___ 99, CN41 ___ 99

Outline Drawing

Dimension	Inches		Millimeters	
	Min.	Max.	Min.	Max.
A	3.602	3.640	91.49	92.45
B	3.146	3.154	79.91	80.11
C	2.705	2.735	68.71	69.47
D	1.125	1.165	28.58	29.59
E	.795	.805	20.19	20.45
F	.788	.798	19.76	20.27
G	.608	.628	15.44	15.95
H	.480	.520	12.19	13.21
J	.43	.47	10.92	11.94
LO	.245	.255	6.22	6.48
M	—	—	M5 x 0.8	

CN—Common Anode Diode Module
 CD—Dual Diode Module
 CC—Common Cathode Diode Module



CD41 ___ 99, CC41 ___ 99,
 CN41 ___ 99

**Dual Diode
 POW-R-BLOK™ Modules
 100 Amperes/200-2400 Volts**

Ordering Information

Example: Select the complete eight digit module part number you desire from the table — i.e. CD412499 is a 2400 Volt, 100 Ampere Dual Diode POW-R-BLOK™ Module.

Type	V _{RRM} Volts (x100)	Current Rating Amperes (100)
CD41	02	99
CC41	04	
CN41	06	
	08	
	10	
	12	
	14	
	16	
	18	
	20	
	22	
	24	

Description

Powerex POW-R-BLOK™ Assemblies combine multiple power semiconductor devices in a single, electrically isolated module. This dense, cost-effective packaging is made possible by Powerex's proprietary *glass passivation* process, in which each semiconductor junction is sealed with a protective layer of glass. Exhaustive testing at high voltages and high temperatures has demonstrated the excellent parameter stability of these glass-protected products.

The POW-R-BLOK™ features a self-contained electrical isolation system. The use of BeO ceramic isolators with high thermal conductivity has achieved excellent circuit-to-baseplate isolation (≥2500 volts RMS), while maintaining efficient cooling of the semiconductors. POW-R-BLOK™ has been tested and recognized by Underwriters Laboratories (QQX2 Power Switching Semiconductors).

Features:

- Glass Passivation
- Hybrid Construction
- Isolated Base Plate
- Insulated Package
- Low Thermal Impedance
- Metal Base Plate
- UL Recognized

Applications:

- Battery Supplies
- DC Motor Power Supplies
- AC Motor Power Supplies
- Center Tap Circuits

Benefits:

- No Additional Insulating Components Required
- Easy Installation
- Reduced Engineering Time
- Improved Heat Transfer
- Voltage Stability



Powerex, Inc., Hillis Street, Youngwood, Pennsylvania 15697 (412) 925-7272
 Powerex Europe, S.A., 428 Avenue G. Durand, BP107, 72003 Le Mans, France (43) 72.75.15

GD41 ___ 99, CC41 ___ 99, CN41 ___ 99
 Dual Diode POW-R-BLOCK™ Modules
 100 Amperes/200-2400 Volts

Absolute Maximum Ratings

Characteristics	Symbol	CD410299	CD410499	CD410699	CD410899	CD411099	CD411299	Units
		CC410299	CC410499	CC410699	CC410899	CC411099	CC411299	
		CN410299	CN410499	CN410699	CN410899	CN411099	CN411299	
Peak Reverse Blocking Voltage	V_{RRM}	200	400	600	800	1000	1200	Volts
Transient Peak Reverse Blocking Voltage (Non-Repetitive) $t < 5ms$	V_{RSM}	300	500	800	1000	1200	1400	Volts
DC Reverse Blocking Voltage	$V_{R(DC)}$	160	320	480	640	800	960	Volts
		CD411499	CD411699	CD411899	CD412099	CD412299	CD412499	
		CC411499	CC411699	CC411899	CC412099	CC412299	CC412499	
		CN411499	CN411699	CN411899	CN412099	CN412299	CN412499	
Peak Reverse Blocking Voltage	V_{RRM}	1400	1600	1800	2000	2200	2400	Volts
Transient Peak Reverse Blocking Voltage (Non-Repetitive) $t < 5ms$	V_{RSM}	1600	1800	2000	2200	2400	2600	Volts
DC Reverse Blocking Voltage	$V_{R(DC)}$	1120	1280	1440	1600	1760	1920	Volts
				CD41 ___ 99				
				CC41 ___ 99				
				CN41 ___ 99				
RMS On-State Current	$I_{F(RMS)}$			157				Amperes
Average On-State Current, $T_C = 113^\circ C$	$I_{F(AV)}$			100				Amperes
Peak One-Cycle Surge (Non-Repetitive) On-State Current (60 Hz)	I_{FSM}			2400				Amperes
Peak Three-Cycle Surge (Non-Repetitive) On-State Current (60 Hz)	I_{FSM}			1950				Amperes
Peak Ten-Cycle Surge (Non-Repetitive) On-State Current (60 Hz)	I_{FSM}			1400				Amperes
Peak One-Cycle Surge (Non-Repetitive) On-State Current (50 Hz)	I_{FSM}			2190				Amperes
I^2t (for Fusing), 8.3 milliseconds	I^2t			23900				A ² sec
Storage Temperature	T_{STG}			-40 to 165				°C
Operating Temperature	T_J			-40 to 150				°C
Maximum Mounting Torque M6 Mounting Screw	—			50				in.-lb.
Maximum Terminal Torque M5 Terminal Screw	—			35				in.-lb.
Module Weight (Typical)	—			142				Grams
V Isolation	V_{RMS}			2500				Volts



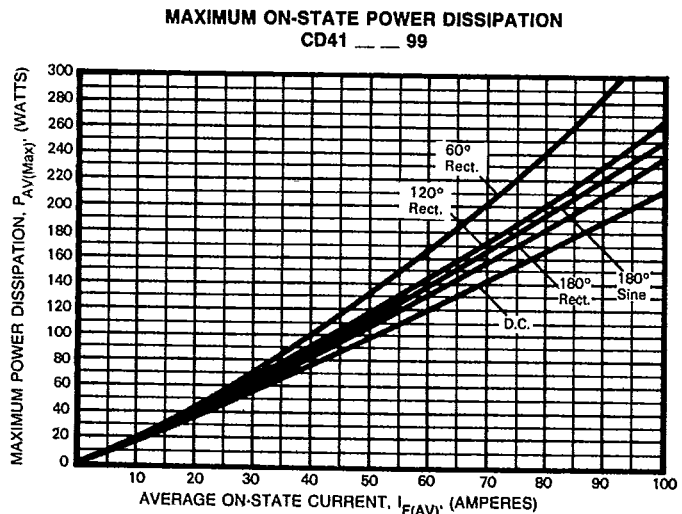
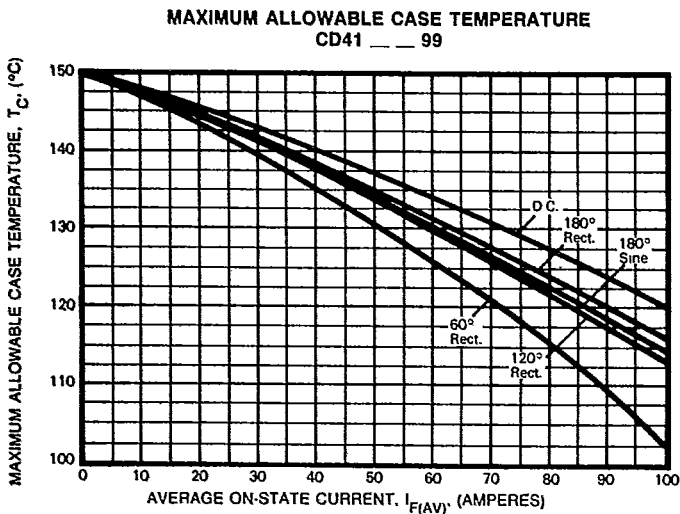
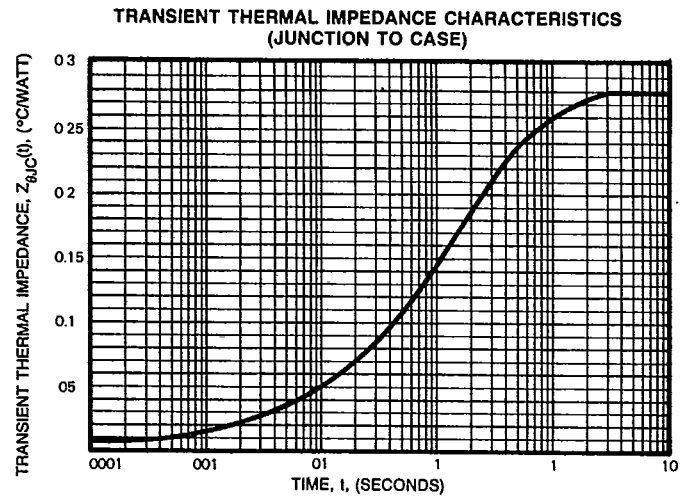
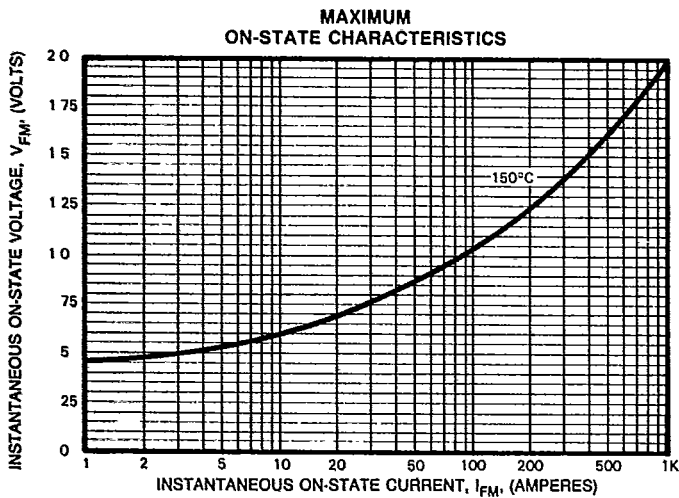
Powerex, Inc., Hillis Street, Youngwood, Pennsylvania 15697 (412) 925-7272
 Powerex Europe, S.A., 428 Avenue G. Durand, BP107, 72003 Le Mans, France (43) 72.75.15

CD41 ___ 99, CC41 ___ 99, CN41 ___ 99
 Dual Diode POW-R-BLOK™ Modules
 100 Amperes/200-2400 Volts

Electrical and Thermal Characteristics, $T_J=25^\circ\text{C}$ unless otherwise specified

Characteristic	Symbol	Test Conditions	CD41 ___ 99		Units
			CC41 ___ 99	CN41 ___ 99	
Blocking State Maximums					
Reverse Leakage Current, Peak	I_{RRM}	$T_J = 150^\circ\text{C}$, $V_{RRM} = \text{rated}$	15		mA
Conducting State Maximums					
Peak On-State Voltage	V_{FM}	$I_{FM} = 250\text{A}$	1.3		Volts
Switching Typical					
Reverse Recovery Time	t_{rr}	$I_{FM} = 314\text{A}$, $-di/dt = 25\text{A}/\mu\text{s}$	7		μs
Thermal Maximums					
Thermal Resistance, Junction to Case	$R_{\theta JC}$	Per Device	0.28		$^\circ\text{C}/\text{Watt}$
Thermal Resistance, Case to Sink Lubricated	$R_{\theta CS}$	Per Device	0.2		$^\circ\text{C}/\text{Watt}$

WARNING:
 Internal insulation used is Beryllium Oxide. User should avoid grinding, crushing or abrading these portions. Care must be exercised in properly disposing of unwanted modules.



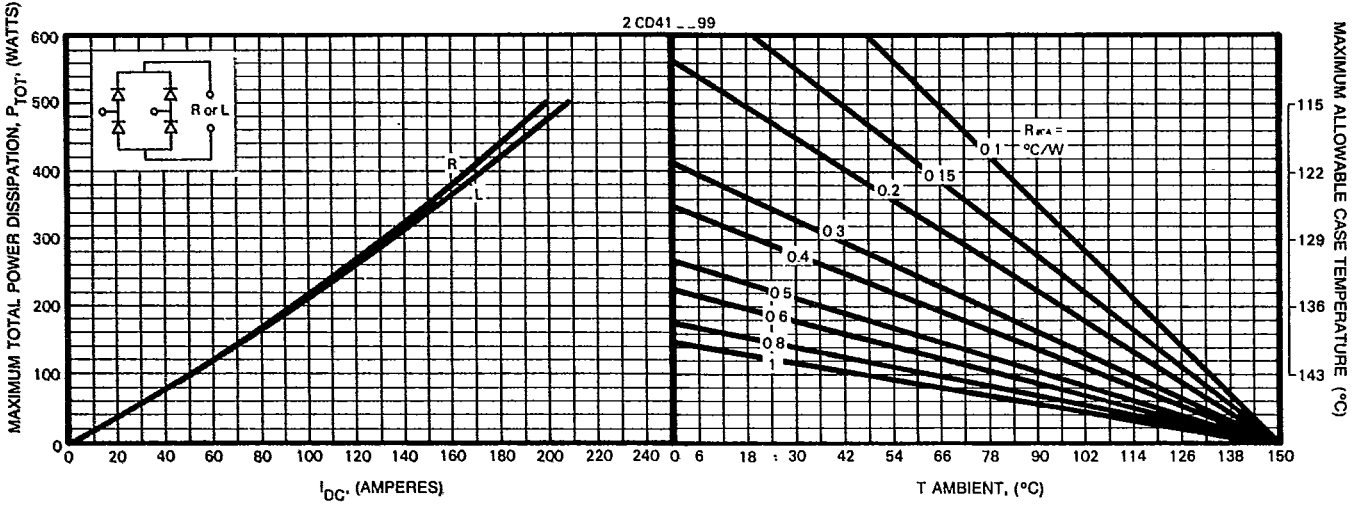


Powerex, Inc., Hillis Street, Youngwood, Pennsylvania 15697 (412) 925-7272
 Powerex Europe, S.A., 428 Avenue G. Durand, BP107, 72003 Le Mans, France (43) 72.75.15

CD41 ___ 99, CC41 ___ 99, CN41 ___ 99
 Dual Diode POW-R-BLOK™ Modules
 100 Amperes/200-2400 Volts

MAXIMUM TOTAL POWER DISSIPATION AND MAXIMUM AMBIENT TEMPERATURES

1φ—BRIDGE RESISTIVE AND INDUCTIVE LOAD



3φ—BRIDGE AND AC SWITCH

