

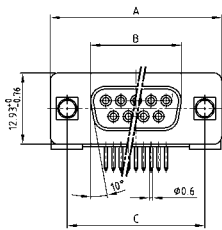
D-SUB STANDARD

Solder pin – Angled – .370" / 9.4 mm – Precision machined contacts – Plastic bracket



RoHS compliant – CSA listed, File No.: LR 115000-1 – UL listed, File No.: E202784

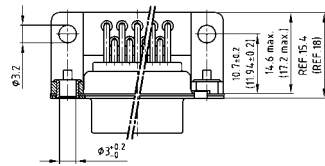
SOCKET CONNECTOR



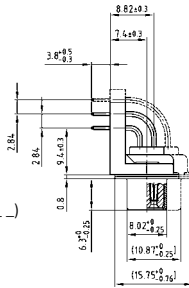
No. of pos.	A -0.76	B -0.25	C
09	31.19	16.46	25.00 +0.12
15	39.52	24.79	33.30 +0.15 -0.10
25	53.42	38.50	47.04 +0.13
37	69.70	54.96	63.50 +0.13
50	67.31	52.55	61.10 +0.14 -0.11

PCB layout: Kat1kGGA

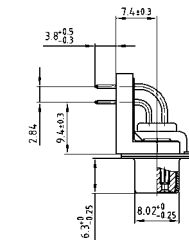
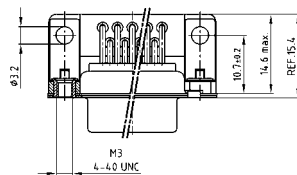
Mounting style: Through-hole



50 pos. = Dim. in (_)



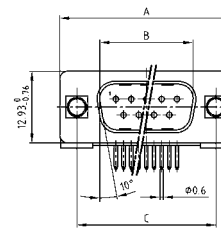
Mounting style: Threaded insert



DESCRIPTION

- Mounting styles:
 - with mounting bracket and Ø .118" / 3 mm through-hole
 - with mounting bracket, grounding strap and 4-40 UNC or M3 threaded insert
 - with mounting bracket, grounding strap and 4-40 UNC or M3 front spacer
 - with mounting bracket, PCB clip and 4-40 UNC or M3 threaded insert
 - with mounting bracket, PCB clip and 4-40 UNC or M3 front spacer
- Quality class 3 (also available in quality class 1)
- Shell: Steel tin plated (brass tin plated or stainless steel available on request)

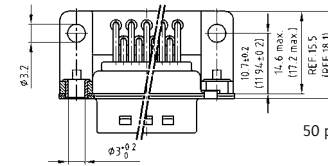
PLUG CONNECTOR



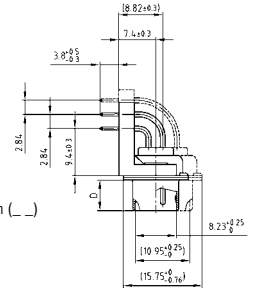
No. of pos.	A -0.76	B -0.25	C	D -0.3
09	31.19	16.79	25.00 +0.12	6.12
15	39.52	25.12	33.30 +0.15 -0.10	6.12
25	53.42	38.84	47.04 +0.13	5.99
37	69.70	55.30	63.50 +0.13	5.99
50	67.31	52.68	61.10 +0.14 -0.11	5.99

PCB layout: Kat1kGHA

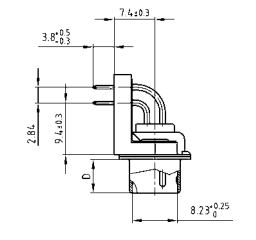
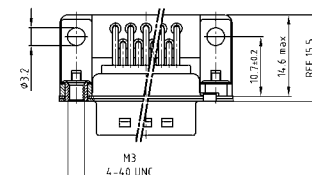
Mounting style: Through-hole



50 pos. = Dim. in (_)



Mounting style: Threaded insert



ORDER DATA

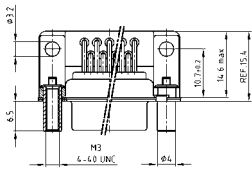
SOCKET CONNECTOR		
No. of pos.	Mounting style	Part Number
09	Through-hole	164 A 10669 X
15	Through-hole	164 A 10679 X
25	Through-hole	164 A 10689 X
37	Through-hole	164 A 10699 X
50	Through-hole	164 A 10709 X
09	Grounding strap / 4-40 UNC Threaded insert	164 A 12329 X
15	Grounding strap / 4-40 UNC Threaded insert	164 A 12339 X
25	Grounding strap / 4-40 UNC Threaded insert	164 A 12349 X
37	Grounding strap / 4-40 UNC Threaded insert	164 A 12359 X
09	Grounding strap / M3 Threaded insert	164 A 12519 X
15	Grounding strap / M3 Threaded insert	164 A 12529 X
25	Grounding strap / M3 Threaded insert	164 A 12539 X
37	Grounding strap / M3 Threaded insert	164 A 12549 X

PLUG CONNECTOR		
No. of pos.	Mounting style	Part Number
09	Through-hole	163 A 11719 X
15	Through-hole	163 A 11729 X
25	Through-hole	163 A 11739 X
37	Through-hole	163 A 11749 X
50	Through-hole	163 A 11759 X
09	Grounding strap / 4-40 UNC Threaded insert	163 A 14119 X
15	Grounding strap / 4-40 UNC Threaded insert	163 A 14129 X
25	Grounding strap / 4-40 UNC Threaded insert	163 A 14139 X
37	Grounding strap / 4-40 UNC Threaded insert	163 A 14149 X
09	Grounding strap / M3 Threaded insert	163 A 14169 X
15	Grounding strap / M3 Threaded insert	163 A 14179 X
25	Grounding strap / M3 Threaded insert	163 A 14189 X
37	Grounding strap / M3 Threaded insert	163 A 14199 X

D-SUB STANDARD – MOUNTING STYLES

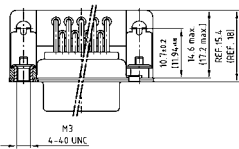
Solder pin – Angled – .370" / 9.4 mm – Precision machined contacts – Plastic bracket

ORDER DATA



SOCKET CONNECTOR			
No. of pos.	Mounting style	Part Number	
09	Grounding strap/4-40 UNC Front spacer	164 A 12229 X	
15	Grounding strap/4-40 UNC Front spacer	164 A 12239 X	
25	Grounding strap/4-40 UNC Front spacer	164 A 12249 X	
37	Grounding strap/4-40 UNC Front spacer	164 A 12259 X	
09	Grounding strap/M3 Front spacer	164 A 12279 X	
15	Grounding strap/M3 Front spacer	164 A 12289 X	
25	Grounding strap/M3 Front spacer	164 A 12299 X	
37	Grounding strap/M3 Front spacer	164 A 12309 X	

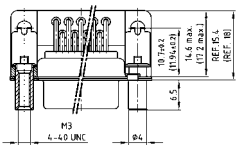
PLUG CONNECTOR			
No. of pos.	Mounting style	Part Number	
09	Grounding strap/4-40 UNC Front spacer	163 A 13829 X	
15	Grounding strap/4-40 UNC Front spacer	163 A 13839 X	
25	Grounding strap/4-40 UNC Front spacer	163 A 13849 X	
37	Grounding strap/4-40 UNC Front spacer	163 A 13859 X	
09	Grounding strap/M3 Front spacer	163 A 13879 X	
15	Grounding strap/M3 Front spacer	163 A 13889 X	
25	Grounding strap/M3 Front spacer	163 A 13899 X	
37	Grounding strap/M3 Front spacer	163 A 13909 X	



SOCKET CONNECTOR			
No. of pos.	Mounting style	Part Number	
09	PCB clip / 4-40 UNC Threaded insert	164 A 12969 X	
15	PCB clip / 4-40 UNC Threaded insert	164 A 12979 X	
25	PCB clip / 4-40 UNC Threaded insert	164 A 12989 X	
37	PCB clip / 4-40 UNC Threaded insert	164 A 12999 X	
50	PCB clip / 4-40 UNC Threaded insert	164 A 19139 X	
09	PCB clip / M3 Threaded insert	164 A 13009 X	
15	PCB clip / M3 Threaded insert	164 A 13019 X	
25	PCB clip / M3 Threaded insert	164 A 13029 X	
37	PCB clip / M3 Threaded insert	164 A 13039 X	
50	PCB clip / M3 Threaded insert	164 A 19149 X	

PLUG CONNECTOR			
No. of pos.	Mounting style	Part Number	
09	PCB clip / 4-40 UNC Threaded insert	163 A 14489 X	
15	PCB clip / 4-40 UNC Threaded insert	163 A 14499 X	
25	PCB clip / 4-40 UNC Threaded insert	163 A 14509 X	
37	PCB clip / 4-40 UNC Threaded insert	163 A 14519 X	
50	PCB clip / 4-40 UNC Threaded insert	163 A 18709 X	
09	PCB clip / M3 Threaded insert	163 A 14529 X	
15	PCB clip / M3 Threaded insert	163 A 14539 X	
25	PCB clip / M3 Threaded insert	163 A 14549 X	
37	PCB clip / M3 Threaded insert	163 A 14559 X	
50	PCB clip / M3 Threaded insert	163 A 18719 X	

PCB clip .122" / 3.1 ± .004" / 0.10 mm hole diameter and .063" / 1.6 mm circuit board thickness



SOCKET CONNECTOR			
No. of pos.	Mounting style	Part Number	
09	PCB clip / 4-40 UNC Front spacer	164 A 13089 X	
15	PCB clip / 4-40 UNC Front spacer	164 A 13099 X	
25	PCB clip / 4-40 UNC Front spacer	164 A 13109 X	
37	PCB clip / 4-40 UNC Front spacer	164 A 13119 X	
50	PCB clip / 4-40 UNC Front spacer	164 A 19159 X	
09	PCB clip / M3 Front spacer	164 A 13129 X	
15	PCB clip / M3 Front spacer	164 A 13139 X	
25	PCB clip / M3 Front spacer	164 A 13149 X	
37	PCB clip / M3 Front spacer	164 A 13159 X	
50	PCB clip / M3 Front spacer	164 A 19169 X	

PLUG CONNECTOR			
No. of pos.	Mounting style	Part Number	
09	PCB clip / 4-40 UNC Front spacer	163 A 14609 X	
15	PCB clip / 4-40 UNC Front spacer	163 A 14619 X	
25	PCB clip / 4-40 UNC Front spacer	163 A 14629 X	
37	PCB clip / 4-40 UNC Front spacer	163 A 14639 X	
50	PCB clip / 4-40 UNC Front spacer	163 A 18729 X	
09	PCB clip / M3 Front spacer	163 A 14649 X	
15	PCB clip / M3 Front spacer	163 A 14659 X	
25	PCB clip / M3 Front spacer	163 A 14669 X	
37	PCB clip / M3 Front spacer	163 A 14679 X	
50	PCB clip / M3 Front spacer	163 A 18739 X	

PCB clip .122" / 3.1 ± .004" / 0.10 mm hole diameter and .063" / 1.6 mm circuit board thickness

PCB layout: Kat1kGGA

PCB layout: Kat1kGHA