

**Wire to Board Connectors  
AMP ASL Connectors**



**Features**

- Wire-to-wire and wire-to-board connectors
- 2.54mm centerline pitch
- Receptacle and cap housings are halfway loaded with insulation displacement type contacts
- Accept 2 wire size ranges, #28-26 and #24 AWG.
- Post header features self retaining leg.
- Receptacle connectors mate with either cap connectors or post headers
- Housings available in three colors; black, blue, and red
- Mass termination
- Positive locking for easy mating and unmating

AMP ASL Connector is a complete Printed Circuit Board Interconnection System of 2.54mm pitch centerline. Receptacle housings and cap housings are provided with halfway loaded receptacle and pin contacts. The contacts are inserted into each housing fully upon wire termination.

Wires are mass terminated using insulation displacement technique by mini press or by DECAM III (Double Ended Cable Assembly Machine). DECAM III with the programmable connector autoloader enables production of multiple type wire harnesses automatically. Post header assemblies have PC board locks on both sides of headers so

that headers can be held in position until permanently secured by soldering.

Receptacle connectors with positive locking feature mate with both caps and post headers at low mating force. Two contact sizes are provided to accept two wire ranges of AWG #28-26 and AWG 24.

All of housings are available in three colors, black, blue, and red. Available positions of housings are 2, 3, 4, 5, 6, 8, 10, 12, 16 and 20 positions.

**Performance Data.**

**Voltage Rating:** 250VAC/DC

**Current Rating:**

- 1.5A (#28AWG wire)
- 2.0A (#26AWG wire)
- 3.0A (#24AWG wire)

**Operating Temperature:**  
-30-+105° C

**Overall Low Level Resistance:** 10mΩ max.(initial)

**Insulation Resistance:**  
500MΩ min.

**Withstand Voltage:**  
600V AC(for one minute)

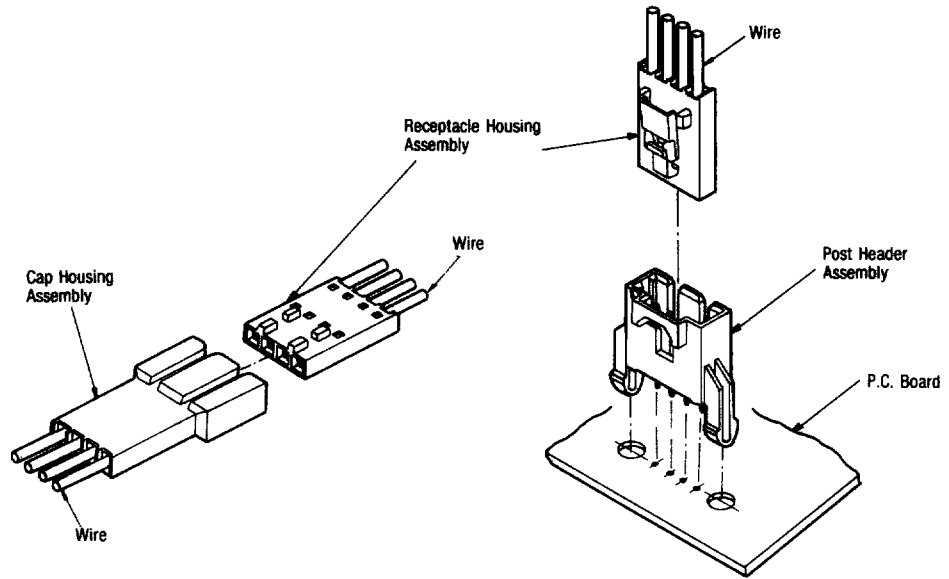
**Product Specifications:**  
108-5199

**Application Specifications:**  
114-5090

**Customer Manual:**  
CM-274J

## Wire to Board Connectors AMP ASL Connectors

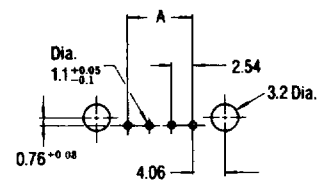
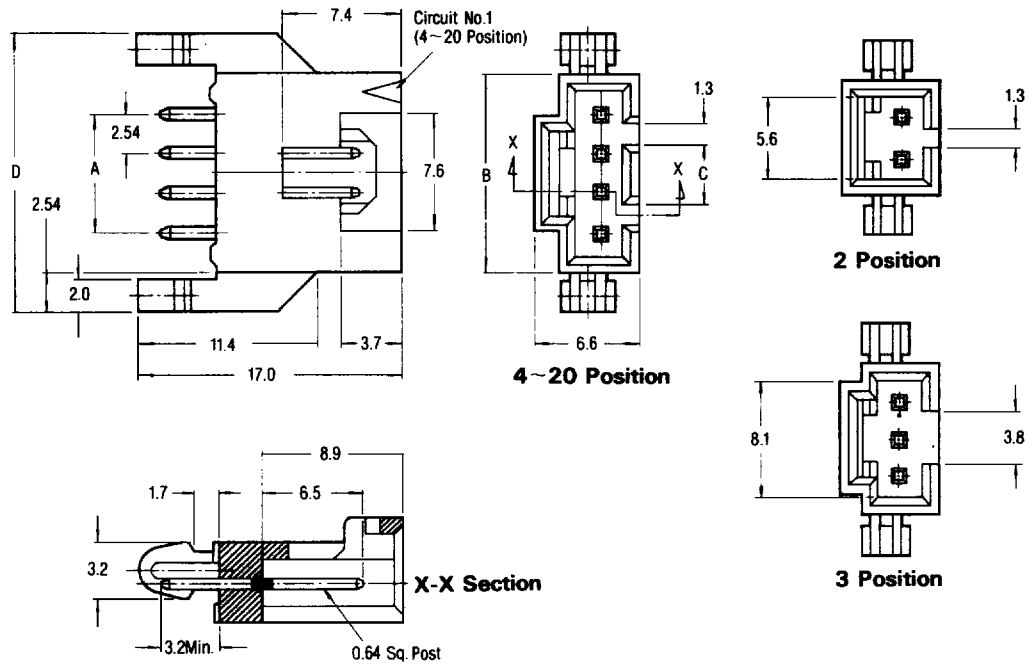
### Typical Application



### Post Header Assemblies (0.64 Sq. Post)

#### Material & Finish:

Housing—UL 94V-0 rated glass-filled P. B. T.  
(See chart for color)  
Post—Pre-tin Brass



P.C. Board Hole Pattern Layout

No. of Position	Dimensions				Part No.				
	A	B	C	D	Black*	Blue*	Red*	Green*	Orange*
2	2.54	—	—	12.7	173118-2	—	—	—	—
3	5.08	—	—	15.2	173118-3	2-173118-3	4-173118-3	—	—
4	7.62	12.7	3.8	17.8	173118-4	—	4-173118-4	6-173118-4	8-173118-4
5	10.16	15.2	6.4	20.3	173118-5	—	4-173118-5	6-173118-5	8-173118-5
6	12.70	17.8	8.9	22.9	173118-6	2-173118-6	4-173118-6	6-173118-6	8-173118-6
8	17.78	22.8	14.0	27.9	173118-8	2-173118-8	4-173118-8	6-173118-8	8-173118-8
10	22.86	27.9	19.1	33.0	1-173118-0	—	—	—	—
12	27.94	33.0	24.1	38.1	—	—	—	—	—
16	38.10	43.2	34.3	50.3	—	—	—	—	—
20	48.26	53.3	44.5	58.4	2-173118-0	4-173118-0	6-173118-0	—	—

\*Housing Color

# Wire to Board Connectors

## AMP ASL Connectors

### Cap Housing Assemblies

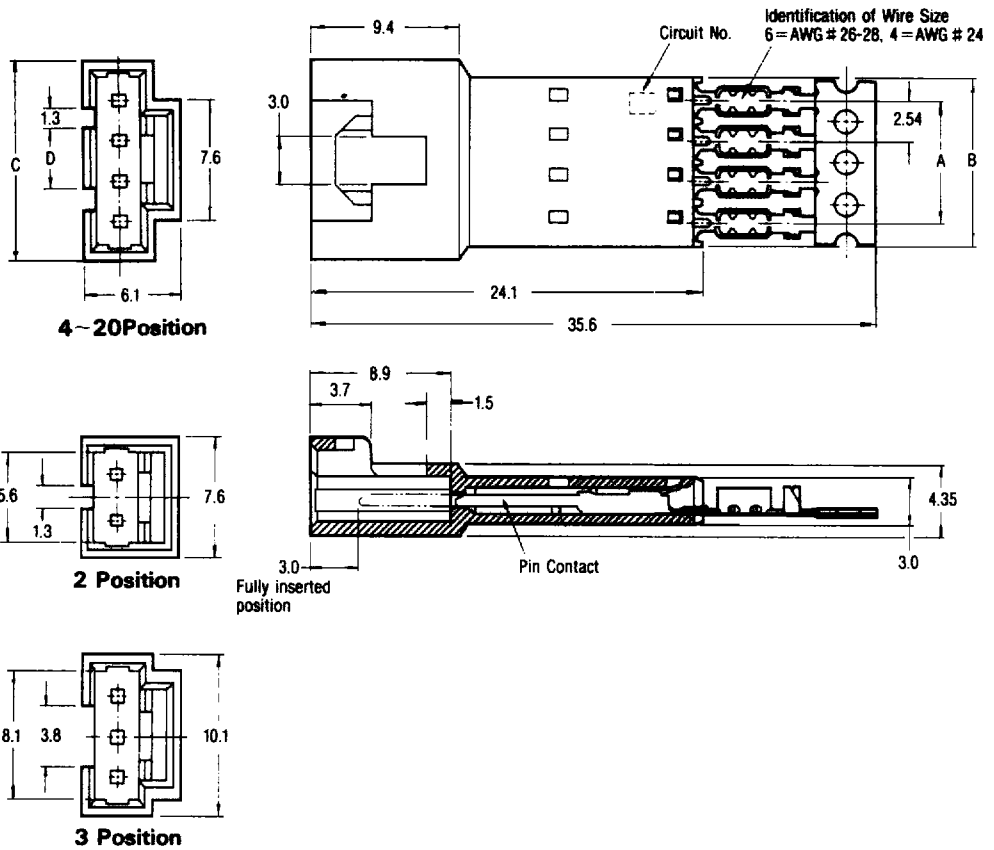
(Preloaded with Insulation Displacement Pin Contact Halfway)

#### Material & Finish:

Housing—UL 94V-0 rated, glass-filled P. B. T.  
(See chart for color)  
Contact—Pre-Tin Brass

#### Applicable Wire Conductor:

Solid (With tin plated)  
7-stranded (With tin plated) and Tin coating stranded



Wire Range AWG(mm <sup>2</sup> )	Insulation Diameter	No. of Position	Dimensions				Part No.				
			A	B	C	D	Black*	Blue*	Red*	Green*	Orange*
28-26 (0.08~0.15)	0.9~1.35	2	2.54	—	—	—	173116-2	2-173116-2	4-173116-2	6-173116-2	8-173116-2
		3	5.08	—	—	—	173116-3	—	—	6-173116-3	8-173116-3
		4	7.62	10.7	12.7	3.8	173116-4	—	4-173116-4	6-173116-4	8-173116-4
		5	10.16	13.2	15.2	6.4	—	—	—	6-173116-5	8-173116-5
		6	12.70	15.8	17.8	8.9	173116-6	2-173116-6	—	6-173116-6	8-173116-6
		8	17.78	20.8	22.8	14.0	—	2-173116-8	4-173116-8	—	8-173116-8
		10	22.86	25.9	27.9	19.1	—	3-173116-0	5-173116-0	—	—
		12	27.94	31.0	33.0	24.1	1-173116-2	3-173116-2	—	—	—
		16	38.10	41.2	43.2	34.3	—	3-173116-6	5-173116-6	—	—
		20	48.26	51.3	53.3	44.5	—	4-173116-0	6-173116-0	—	—
24 (0.2~0.22)	0.9~1.35	2	2.54	—	—	—	173124-2	2-173124-2	—	6-173124-2	8-173124-2
		3	5.08	—	—	—	—	—	—	6-173124-3	8-173124-3
		4	7.62	10.7	12.7	3.8	173124-4	—	—	6-173124-4	8-173124-4
		5	10.16	13.2	15.2	6.4	—	—	—	6-173124-5	8-173124-5
		6	12.70	15.8	17.8	8.9	—	—	—	6-173124-6	8-173124-6
		8	17.78	20.8	22.8	14.0	—	—	—	6-173124-8	8-173124-8
		10	22.86	25.9	27.9	19.1	—	—	—	—	—
		12	27.94	31.0	33.0	24.1	—	—	—	—	—
		16	38.10	41.2	43.2	34.3	—	—	—	—	—
		20	48.26	51.3	53.3	44.5	—	—	—	—	—

\* Housing colors.

**Wire to Board Connectors**  
**AMP ASL Connectors**

**Receptacle Housing Assemblies**

(Preloaded with Insulation Displacement Receptacle Contact Halfway)

**Material & Finish:**

Housing—UL 94V-0 rated, glass-filled P. B. T.

(See chart for color)

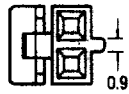
Contact—Pre-Tin Phosphor Bronze

**Applicable Wire Conductor:**

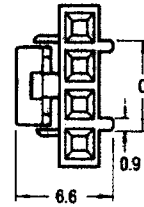
Solid (With tin plated)

7-stranded (With tin plated)

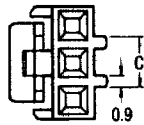
and Tin coating stranded



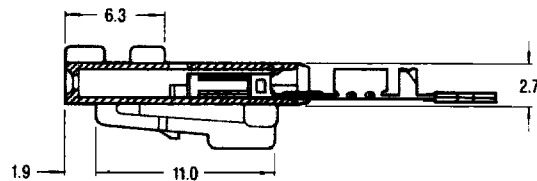
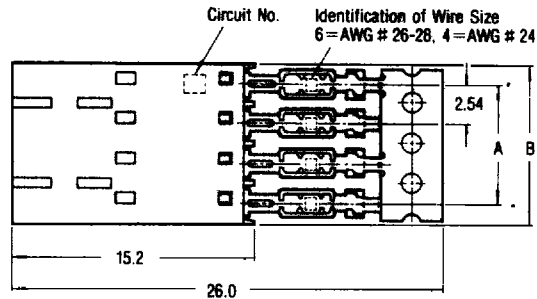
**2 Position**



**4~20 Position**



**3 Position**



Wire Range AWG(mm <sup>2</sup> )	Insulation Diameter	No. of Position	Dimension			Part No.				
			A	B	C	Black*	Blue*	Red*	Green*	Orange*
28-28 (0.08~0.15)	0.9~1.35	2	2.54	5.1	—	<b>173114-2</b>	—	—	—	<b>8-173114-2</b>
		3	5.08	7.6	—	<b>173114-3</b>	—	<b>4-173114-3</b>	<b>6-173114-3</b>	<b>8-173114-3</b>
		4	7.62	10.1	6.0	<b>173114-4</b>	—	<b>4-173114-4</b>	—	<b>8-173114-4</b>
		5	10.16	12.7	8.5	<b>173114-5</b>	<b>2-173114-5</b>	<b>4-173114-5</b>	<b>6-173114-5</b>	<b>8-173114-5</b>
		6	12.70	15.2	11.1	<b>173114-6</b>	<b>2-173114-6</b>	<b>4-173114-6</b>	—	<b>8-173114-6</b>
		8	17.78	20.3	16.1	<b>173114-8</b>	<b>2-173114-8</b>	<b>4-173114-8</b>	<b>6-173114-8</b>	<b>8-173114-8</b>
		10	22.86	25.4	21.2	<b>1-173114-0</b>	<b>3-173114-0</b>	—	—	—
		12	27.94	30.5	26.3	—	<b>3-173114-2</b>	<b>5-173114-2</b>	—	—
		16	38.10	40.6	36.5	—	<b>3-173114-6</b>	—	—	—
		20	48.26	50.8	46.6	<b>2-173114-0</b>	<b>4-173114-0</b>	<b>6-173114-0</b>	—	—
24 (0.2~0.22)	0.9~1.35	2	2.54	5.1	—	<b>173123-2</b>	<b>2-173123-2</b>	<b>4-173123-2</b>	<b>6-173123-2</b>	—
		3	5.08	7.6	—	<b>173123-3</b>	<b>2-173123-3</b>	<b>4-173123-3</b>	—	—
		4	7.62	10.1	6.0	<b>173123-4</b>	—	—	<b>6-173123-4</b>	<b>8-173123-4</b>
		5	10.16	12.7	8.5	<b>173123-5</b>	—	<b>4-173123-5</b>	<b>6-173123-5</b>	<b>8-173123-5</b>
		6	12.70	15.2	11.1	<b>173123-6</b>	<b>2-173123-6</b>	<b>4-173123-6</b>	<b>6-173123-6</b>	<b>8-173123-6</b>
		8	17.78	20.3	16.1	<b>173123-8</b>	—	<b>4-173123-8</b>	<b>6-173123-8</b>	<b>8-173123-8</b>
		10	22.86	25.4	21.2	—	—	—	—	—
		12	27.94	30.5	26.3	—	—	—	—	—
		16	38.10	40.6	36.5	—	—	—	—	—
		20	48.26	50.8	46.6	<b>2-173123-0</b>	—	<b>6-173123-0</b>	—	—

\* Housing Color

**Application Tooling**

**Mini Press**



**Manual Tool Part No.:**

For Cap—758121-1

For Receptacle—758121-2

**Pneumatic Tool Part No.:**

For Cap—758122-1

For Receptacle—758122-2

**DECAM-J Model III**

Fully automatic double end cable assembly machine.

