

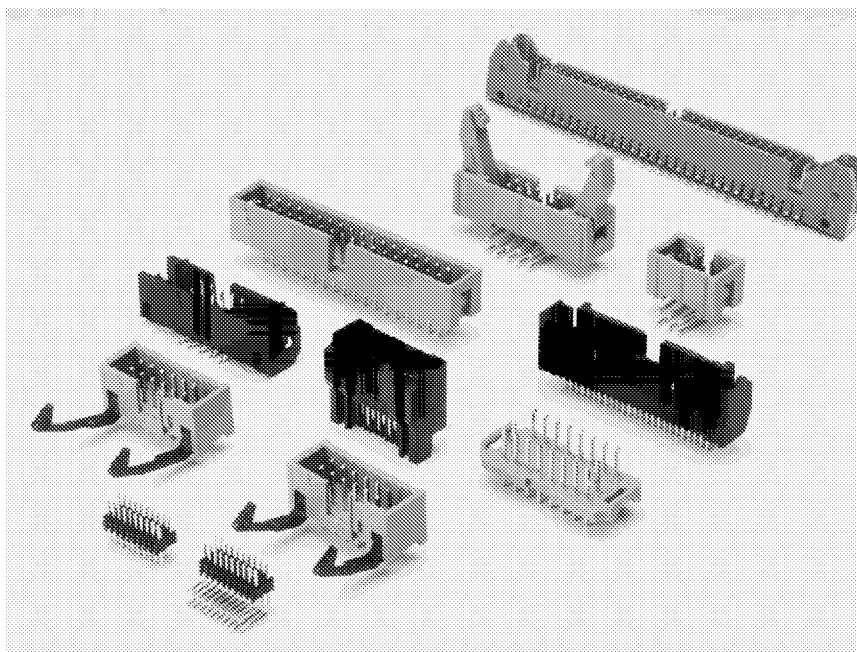
PRODUCT DESCRIPTION

PCB Male Headers provide reliability, convenience and positive polarization when mated with Female Socket Transition Connectors in PC board applications which require repeated connection and disconnection. Optional retainer-ejector latches easily disengage the header and female socket, eliminating stress in the cable termination and solder joint areas during disconnect.

DESIGN ADVANTAGES

- Industry standard polarization mates with center bump as well as dual slot polarized female socket connectors.
- Available in .050 x .100, .100 x .100, .100 x .200 and .100 x .300 center spacing.
- Available in standard, low profile, vertical eject, compliant pin and surface mount configurations.
- Available in high temperature materials.

HEADERS



HEADER INDEX

.050" x .100" 2-Row Straight Tail	14
.050" x .100" 2-Row Right Angle Tails	16
.050" x .100" 4-Row Right Angle Tails	18
.050" x .100" 2-Row Unshrouded Header, Straight	20
.050" x .100" 2-Row Unshrouded Header, Right Angle	21
.100" x .100" Straight Standard Header	22
.100" x .100" Right Angle Standard Header	23
.100" x .100" High Temp. Straight Standard Header	24
.100" x .100" High Temp. Right Angle Standard Header	25
.100" x .100" Low Profile Straight w/ejectors	26
.100" x .100" Low Profile Right Angle w/ejectors	27
.100" x .100" Low Profile Straight	28
.100" x .100" Low Profile Right Angle	29
.100" x .100" Low Profile Straight, High Temp.	30
.100" x .100" Low Profile Right Angle, High Temp.	31
.100" x .100" Low Profile Straight w/latches	32
.100" x .100" Low Profile Right Angle w/latches	33
.100" x .100" Flex-Fit™ with Retainer/Ejector	34
.100" x .100" Flex-Fit™ Low Profile	35
.100" x .100" Surface Mount	36
Pin Strip Headers, Single Row Straight	37
Pin Strip Headers, Single Row Right Angle	38
Pin Strip Headers, Dual Row Straight	39
Pin Strip Headers, Dual Row Right Angle	40
Dip Socket Headers, 14 and 16 Positions	41
Accessories.....	42



SINGLE ROW PIN STRIP HEADERS (STRAIGHT)

.100" CENTERS



PHYSICAL PROPERTIES

INSULATION MATERIAL: Glass reinforced thermoplastic,
rated 94V-0

COLOR: Black

OXYGEN INDEX: 32

CONTACT MATERIAL: Copper alloy, gold or tin/lead
plating over nickel

ELECTRICAL PROPERTIES

CURRENT RATING: 3 Amps/pin

INSULATION RESISTANCE: $>1 \times 10^8$ Ohms

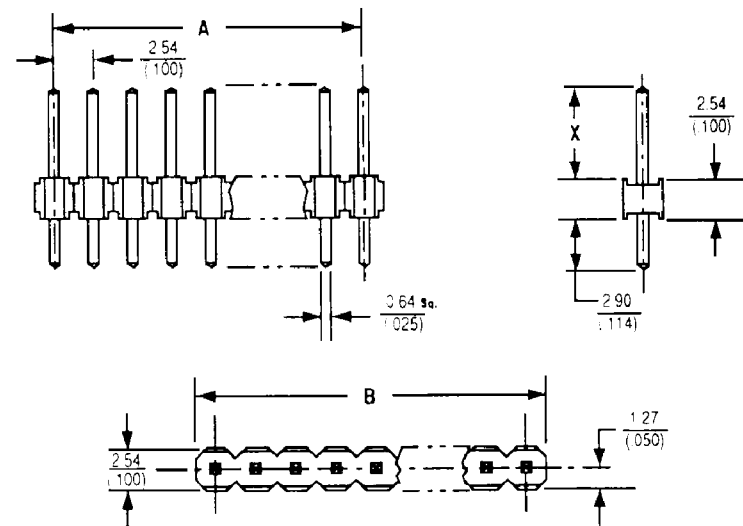
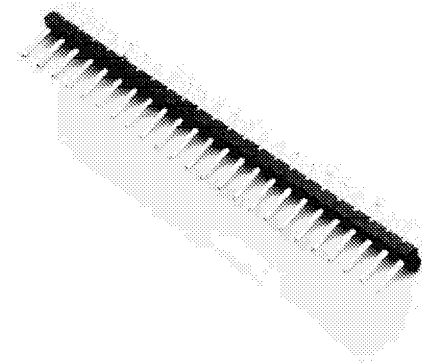
DIELECTRIC STRENGTH: >1000 VAC

ENVIRONMENTAL PROPERTIES

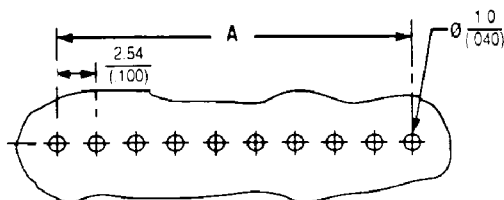
TEMPERATURE RATING: -55°C to 125°C

W	INTERFACE PLATING
G	10 μ " gold over nickel
H	30 μ " gold over nickel
T	100 μ " tin/lead over nickel

X	MATING LENGTH
A	8.1 (.318)
B	5.8 (.230)



Recommended Printed Circuit Board Layout



Ordering Information

NUMBER OF POSITIONS	CATALOG NO. SPECIFY W & X	A	B
1	PS-01SS-WXA	—	2.54 (.100)
2	PS-02SS-WXA	2.54 (.100)	5.08 (.200)
3	PS-03SS-WXA	5.08 (.200)	7.62 (.300)
4	PS-04SS-WXA	7.62 (.300)	10.16 (.400)
5	PS-05SS-WXA	10.16 (.400)	12.70 (.500)
6	PS-06SS-WXA	12.70 (.500)	15.24 (.600)
7	PS-07SS-WXA	15.24 (.600)	17.78 (.700)
8	PS-08SS-WXA	17.78 (.700)	20.32 (.800)
9	PS-09SS-WXA	20.32 (.800)	22.86 (.900)
10	PS-10SS-WXA	22.86 (.900)	25.40 (1.000)
11	PS-11SS-WXA	25.40 (1.000)	27.94 (1.100)
12	PS-12SS-WXA	27.94 (1.100)	30.48 (1.200)
13	PS-13SS-WXA	30.48 (1.200)	33.02 (1.300)
14	PS-14SS-WXA	33.02 (1.300)	35.56 (1.400)
15	PS-15SS-WXA	35.56 (1.400)	38.10 (1.500)
16	PS-16SS-WXA	38.10 (1.500)	40.64 (1.600)
17	PS-17SS-WXA	40.64 (1.600)	43.18 (1.700)
18	PS-18SS-WXA	43.18 (1.700)	45.72 (1.800)
19	PS-19SS-WXA	45.72 (1.800)	48.26 (1.900)
20	PS-20SS-WXA	48.26 (1.900)	50.80 (2.000)
21	PS-21SS-WXA	50.80 (2.000)	53.34 (2.100)
22	PS-22SS-WXA	53.34 (2.100)	55.88 (2.200)
23	PS-23SS-WXA	55.88 (2.200)	58.42 (2.300)
24	PS-24SS-WXA	58.42 (2.300)	60.96 (2.400)
25	PS-25SS-WXA	60.96 (2.400)	63.50 (2.500)
26	PS-26SS-WXA	63.50 (2.500)	66.04 (2.600)
27	PS-27SS-WXA	66.04 (2.600)	68.58 (2.700)
28	PS-28SS-WXA	68.58 (2.700)	71.12 (2.800)
29	PS-29SS-WXA	71.12 (2.800)	73.66 (2.900)
30	PS-30SS-WXA	73.66 (2.900)	76.20 (3.000)
31	PS-31SS-WXA	76.20 (3.000)	78.74 (3.100)
32	PS-32SS-WXA	78.74 (3.100)	81.28 (3.200)
33	PS-33SS-WXA	81.28 (3.200)	83.82 (3.300)
34	PS-34SS-WXA	83.82 (3.300)	86.36 (3.400)
35	PS-35SS-WXA	86.36 (3.400)	88.90 (3.500)
36	PS-36SS-WXA	88.90 (3.500)	91.44 (3.600)
37	PS-37SS-WXA	91.44 (3.600)	93.98 (3.700)
38	PS-38SS-WXA	93.98 (3.700)	96.52 (3.800)
39	PS-39SS-WXA	96.52 (3.800)	99.06 (3.900)
40	PS-40SS-WXA	99.06 (3.900)	101.6 (4.000)

eg. PS-40SS-TBA

SINGLE ROW PIN STRIP HEADERS (RIGHT ANGLE)

.100" CENTERS



PHYSICAL PROPERTIES

INSULATION MATERIAL: Glass reinforced thermoplastic, rated 94V-0

COLOR: Black

OXYGEN INDEX: 32

CONTACT MATERIAL: Copper alloy, gold or tin/lead plating over nickel

ELECTRICAL PROPERTIES

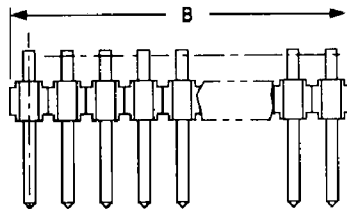
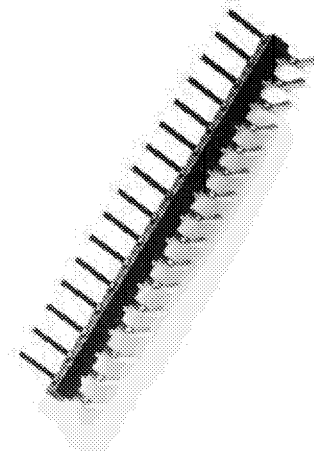
CURRENT RATING: 3 Amps/pin

Insulation Resistance > 1 x 10⁹ Ohms

Dielectric Strength > 1000 VAC

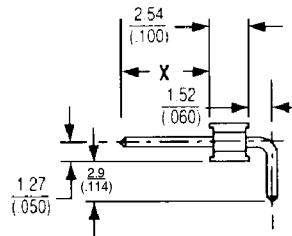
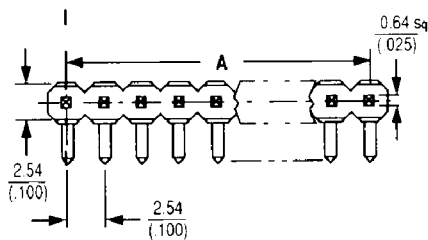
ENVIRONMENTAL PROPERTIES

TEMPERATURE RATING: -55°C to 125°C

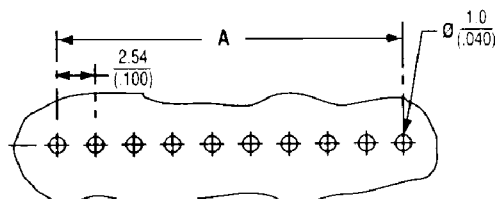


W	INTERFACE PLATING
G	10 μ" gold over nickel
H	30 μ" gold over nickel
T	100 μ" tin/lead over nickel

X	MATING LENGTH
A	8.1 (.318)
B	5.8 (.230)



Recommended Printed Circuit Board Layout



Ordering Information

NUMBER OF POSITIONS	CATALOG NO. SPECIFY W, X	A	B
1	PS-01SR-WXA	—	2.54 (.100)
2	PS-02SR-WXA	2.54 (.100)	5.01 (.200)
3	PS-03SR-WXA	5.08 (.200)	7.62 (.300)
4	PS-04SR-WXA	7.62 (.300)	10.16 (.400)
5	PS-05SR-WXA	10.16 (.400)	12.70 (.500)
6	PS-06SR-WXA	12.70 (.500)	15.24 (.600)
7	PS-07SR-WXA	15.24 (.600)	17.78 (.700)
8	PS-08SR-WXA	17.78 (.700)	20.32 (.800)
9	PS-09SR-WXA	20.32 (.800)	22.86 (.900)
10	PS-10SR-WXA	22.86 (.900)	25.40 (1.000)
11	PS-11SR-WXA	25.40 (1.000)	27.94 (1.100)
12	PS-12SR-WXA	27.94 (1.100)	30.48 (1.200)
13	PS-13SR-WXA	30.48 (1.200)	33.02 (1.300)
14	PS-14SR-WXA	33.02 (1.300)	35.56 (1.400)
15	PS-15SR-WXA	35.56 (1.400)	38.10 (1.500)
16	PS-16SR-WXA	38.10 (1.500)	40.64 (1.600)
17	PS-17SR-WXA	40.64 (1.600)	43.18 (1.700)
18	PS-18SR-WXA	43.18 (1.700)	45.72 (1.800)
19	PS-19SR-WXA	45.72 (1.800)	48.26 (1.900)
20	PS-20SR-WXA	48.26 (1.900)	50.80 (2.000)
21	PS-21SR-WXA	50.80 (2.000)	53.34 (2.100)
22	PS-22SR-WXA	53.34 (2.100)	55.88 (2.200)
23	PS-23SR-WXA	55.88 (2.200)	58.42 (2.300)
24	PS-24SR-WXA	58.42 (2.300)	60.96 (2.400)
25	PS-25SR-WXA	60.96 (2.400)	63.50 (2.500)
26	PS-26SR-WXA	63.50 (2.500)	66.04 (2.600)
27	PS-27SR-WXA	66.04 (2.600)	68.58 (2.700)
28	PS-28SR-WXA	68.58 (2.700)	71.12 (2.800)
29	PS-29SR-WXA	71.12 (2.800)	73.66 (2.900)
30	PS-30SR-WXA	73.66 (2.900)	76.20 (3.000)
31	PS-31SR-WXA	76.20 (3.000)	78.74 (3.100)
32	PS-32SR-WXA	78.74 (3.100)	81.28 (3.200)
33	PS-33SR-WXA	81.28 (3.200)	83.82 (3.300)
34	PS-34SR-WXA	83.82 (3.300)	86.36 (3.400)
35	PS-35SR-WXA	86.36 (3.400)	88.90 (3.500)
36	PS-36SR-WXA	88.90 (3.500)	91.44 (3.600)
37	PS-37SR-WXA	91.44 (3.600)	93.98 (3.700)
38	PS-38SR-WXA	93.98 (3.700)	96.52 (3.800)
39	PS-39SR-WXA	96.52 (3.800)	99.06 (3.900)
40	PS-40SR-WXA	99.06 (3.900)	101.6 (4.000)

eg. PS-40SR-TBA

DUAL ROW PIN STRIP HEADERS STRAIGHT

.100" x .100" CENTERS



PHYSICAL PROPERTIES

INSULATION MATERIAL: Glass reinforced thermo-plastic, rated 94V-0

COLOR: black

OXYGEN INDEX: 32

CONTACT MATERIAL: Copper alloy, gold or tin/lead plating over nickel

ELECTRICAL PROPERTIES

CURRENT RATING: 3 Amps/pin

INSULATION RESISTANCE: > 1 x 10¹² Ohms

DIELECTRIC STRENGTH: > 1000 VAC

ENVIRONMENTAL PROPERTIES

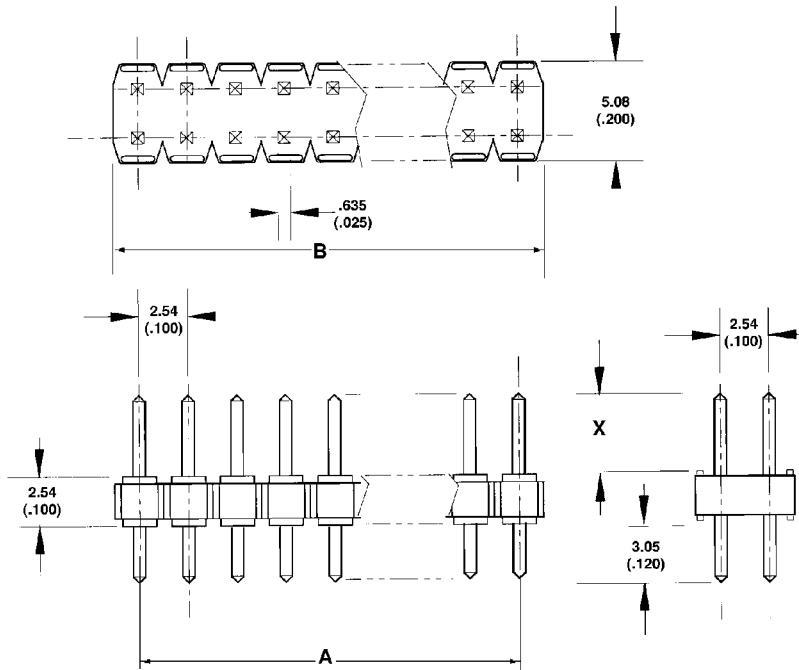
TEMPERATURE RATING: -55°C to 125°C

W	INTERFACE PLATING
G	10 μ" gold over nickel
H	30 μ" gold over nickel
T	100 μ" tin/lead over nickel

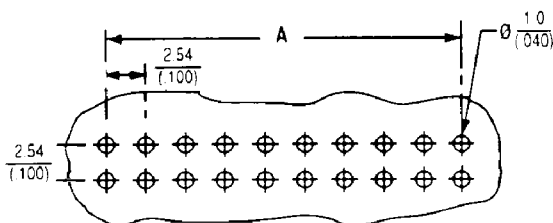
X	MATING LENGTH
A	8.1 (.318)
B	5.8 (.230)

Ordering Information

NUMBER OF POSITIONS	CATALOG NO. SPECIFY W & X	A	B
2	PS-02DS-WXA	2.00 (.079)	4.00 (.158)
4	PS-04DS-WXA	6.00 (.237)	8.00 (.316)
6	PS-06DS-WXA	10.00 (.395)	12.00 (.474)
8	PS-08DS-WXA	14.00 (.553)	16.00 (.632)
10	PS-10DS-WXA	18.00 (.711)	20.00 (.790)
12	PS-12DS-WXA	22.00 (.869)	24.00 (.948)
14	PS-14DS-WXA	26.00 (1.027)	28.00 (1.106)
16	PS-16DS-WXA	30.00 (1.185)	32.00 (1.264)
18	PS-18DS-WXA	34.00 (1.343)	36.00 (1.422)
20	PS-20DS-WXA	38.00 (1.501)	40.00 (1.580)
22	PS-22DS-WXA	42.00 (1.659)	44.00 (1.738)
24	PS-24DS-WXA	46.00 (1.817)	48.00 (1.896)
26	PS-26DS-WXA	50.00 (1.975)	52.00 (2.054)
28	PS-28DS-WXA	54.00 (2.133)	56.00 (2.212)
30	PS-30DS-WXA	58.00 (2.291)	60.00 (2.370)
32	PS-32DS-WXA	62.00 (2.449)	64.00 (2.528)
34	PS-34DS-WXA	66.00 (2.607)	68.00 (2.686)
36	PS-36DS-WXA	70.00 (2.765)	72.00 (2.844)
38	PS-38DS-WXA	74.00 (2.923)	76.00 (3.002)
40	PS-40DS-WXA	78.00 (3.081)	80.00 (3.160)
42	PS-42DS-WXA	82.00 (3.239)	84.00 (3.318)
44	PS-44DS-WXA	86.00 (3.397)	88.00 (3.476)
46	PS-46DS-WXA	90.00 (3.555)	92.00 (3.634)
48	PS-48DS-WXA	94.00 (3.713)	96.00 (3.792)
50	PS-50DS-WXA	98.00 (3.871)	100.00 (3.950)
52	PS-52DS-WXA	102.00 (4.029)	104.00 (4.108)
54	PS-54DS-WXA	106.00 (4.187)	108.00 (4.266)
56	PS-56DS-WXA	110.00 (4.345)	112.00 (4.424)
58	PS-58DS-WXA	114.00 (4.503)	116.00 (4.582)
60	PS-60DS-WXA	118.00 (4.661)	120.00 (4.740)
62	PS-62DS-WXA	122.00 (4.819)	124.00 (4.898)
64	PS-64DS-WXA	126.00 (4.977)	128.00 (5.056)
66	PS-66DS-WXA	130.00 (5.135)	132.00 (5.214)
68	PS-68DS-WXA	134.00 (5.293)	136.00 (5.372)
70	PS-70DS-WXA	138.00 (5.451)	140.00 (5.530)
72	PS-72DS-WXA	142.00 (5.609)	144.00 (5.688)
74	PS-74DS-WXA	146.00 (5.767)	148.00 (5.846)
76	PS-76DS-WXA	150.00 (5.925)	152.00 (6.004)
78	PS-78DS-WXA	154.00 (6.083)	156.00 (6.162)
80	PS-80DS-WXA	158.00 (6.241)	160.00 (6.320)



Recommended Printed Circuit Board Layout



eg. PS-80DS-TAA

DUAL ROW PIN STRIP HEADERS RIGHT ANGLE

.100" x .100" CENTERS



PHYSICAL PROPERTIES

INSULATION MATERIAL: Glass reinforced thermo-plastic, rated 94V-0

COLOR: black

OXYGEN INDEX: 32

CONTACT MATERIAL: Copper alloy, gold or tin/lead plating over nickel

ELECTRICAL PROPERTIES

CURRENT RATING: 3 Amps/pin

INSULATION RESISTANCE: > 1 x 10⁹ Ohms

DIELECTRIC STRENGTH: > 1000 VAC

ENVIRONMENTAL PROPERTIES

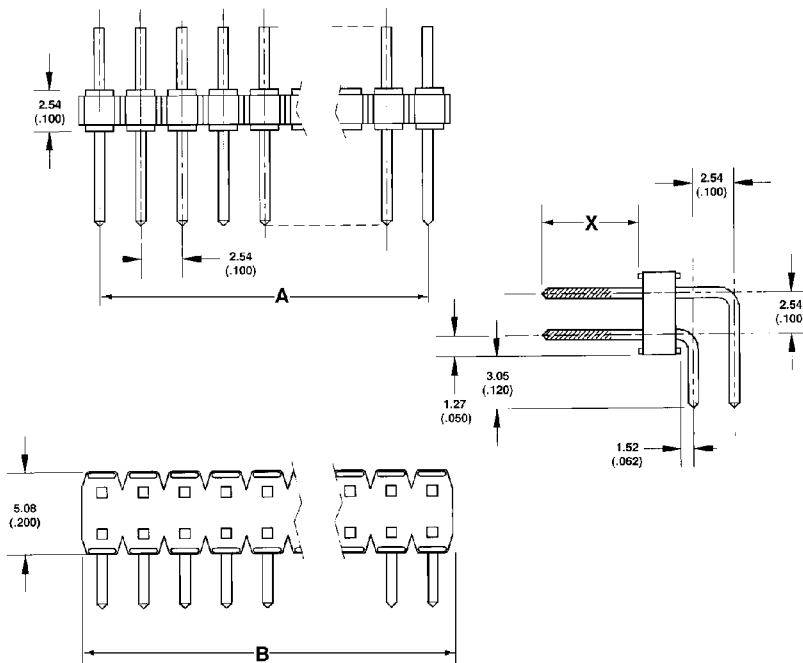
TEMPERATURE RATING: -55°C to 125°C

W	INTERFACE PLATING
G	10 μ" gold over nickel
H	30 μ" gold over nickel
T	100 μ" tin/lead over nickel

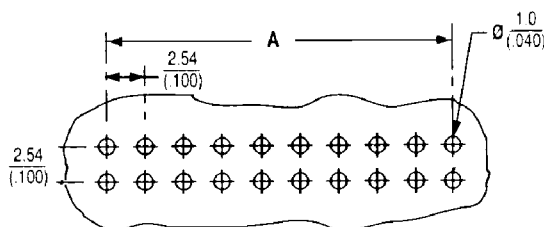
X	MATING LENGTH
A	8.1 (.318)
B	5.8 (.230)

Ordering Information

NUMBER OF POSITIONS	CATALOG NO. SPECIFY W & X	A	B
2	PS-02DR-WXA	2.54 (1.00)	5.08 (.200)
4	PS-04PR-WXA	7.62 (.300)	10.16 (.400)
6	PS-06DR-WXA	12.70 (.500)	15.24 (.600)
8	PS-08DR-WXA	17.78 (.700)	20.32 (.800)
10	PS-10DR-WXA	22.86 (.900)	25.40 (1.000)
12	PS-12DR-WXA	27.94 (1.100)	30.48 (1.200)
14	PS-14DR-WXA	33.02 (1.300)	35.56 (1.400)
16	PS-16DR-WXA	38.10 (1.500)	40.64 (1.600)
18	PS-18DR-WXA	43.18 (1.700)	45.72 (1.800)
20	PS-20DR-WXA	48.26 (1.900)	50.80 (2.000)
22	PS-22DR-WXA	53.34 (2.100)	55.88 (2.200)
24	PS-24DR-WXA	58.42 (2.300)	60.96 (2.400)
26	PS-26DR-WXA	63.50 (2.500)	66.04 (2.600)
28	PS-28DR-WXA	68.58 (2.700)	71.12 (2.800)
30	PS-30DR-WXA	73.66 (2.900)	76.20 (3.000)
32	PS-32DR-WXA	78.74 (3.100)	81.28 (3.200)
34	PS-34DR-WXA	83.82 (3.300)	86.36 (3.400)
36	PS-36DR-WXA	88.90 (3.500)	91.44 (3.600)
38	PS-38DR-WXA	93.98 (3.700)	96.52 (3.800)
40	PS-40DR-WXA	99.06 (3.900)	101.60 (4.000)
42	PS-42DR-WXA	104.14 (4.100)	106.68 (4.200)
44	PS-44DR-WXA	109.22 (4.300)	111.76 (4.400)
46	PS-46DR-WXA	114.30 (4.500)	116.84 (4.600)
48	PS-48DR-WXA	119.38 (4.700)	121.92 (4.800)
50	PS-50DR-WXA	124.46 (4.900)	127.00 (5.000)
52	PS-52DR-WXA	129.54 (5.100)	132.08 (5.200)
54	PS-54DR-WXA	134.62 (5.300)	137.16 (5.400)
56	PS-56DR-WXA	139.70 (5.500)	142.24 (5.600)
58	PS-58DR-WXA	144.78 (5.700)	147.32 (5.800)
60	PS-60DR-WXA	149.86 (5.900)	152.40 (6.000)
62	PS-62DR-WXA	154.94 (6.100)	157.48 (6.200)
64	PS-64DR-WXA	160.02 (6.300)	162.56 (6.400)
66	PS-66DR-WXA	165.10 (6.500)	167.64 (6.600)
68	PS-68DR-WXA	170.18 (6.700)	172.72 (6.800)
70	PS-70DR-WXA	175.26 (6.900)	177.80 (7.000)
72	PS-72DR-WXA	180.34 (7.100)	182.88 (7.200)
74	PS-74DR-WXA	185.42 (7.300)	187.96 (7.400)
76	PS-76DR-WXA	190.50 (7.500)	193.04 (7.600)
78	PS-78DR-WXA	195.58 (7.700)	198.12 (7.800)
80	PS-80DR-WXA	200.66 (7.900)	203.20 (8.000)



Recommended Printed Circuit Board Layout

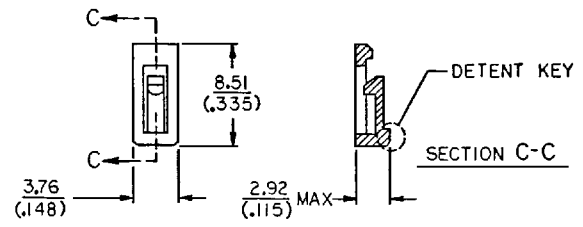


eg. PS-80DR-TBA

ACCESSORIES

POLARIZING KEY ORDERING INFORMATION

CATALOG NUMBER	COLOR/DESCRIPTION
622-0056P	Blue
636-0056P	Black



Polarizing Key