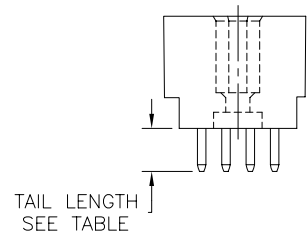
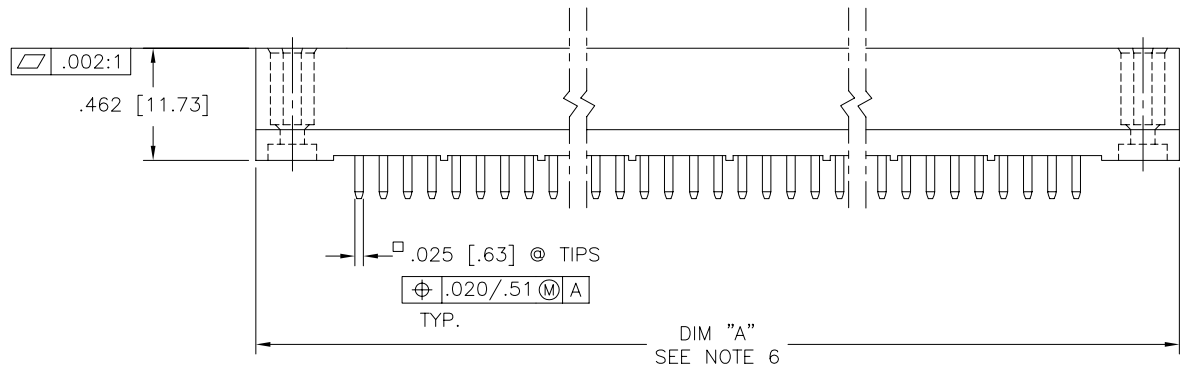
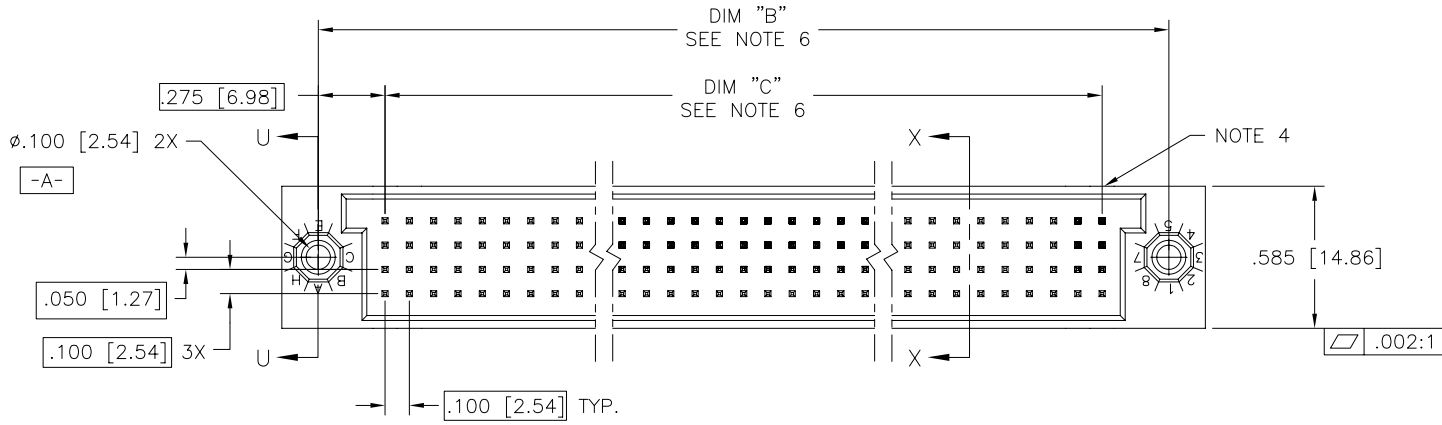


PRODUCT NUMBER  
SEE TABLE



Copyright FCI

mat'l. code NOTE 3		surface ISO 1302 ✓		tolerance ISO 406 ISO 1101		projection INCH/MM		product family HPC	
tolerances unless otherwise specified		angles		linear		scale 1:1		title 4 ROW VERTICAL HEADER DUPLX S.T.B. PINS, 0 G.P.	
ltr	ecn no	dr	date					dwg no	
C	v41072	GAH	7/5/94					sheet 1 of 3 size	
D	v50207	LSS	2/17/95					50776 A3	
E	v91236	HTB	5/14/99	0'±2'				type Product Customer Drawing	
F	v00277	JWS	2/3/00	dr	P.PARSONS	4/5/94			
G	v05-0762	DAI	1018/05	enr	J.AFTON	3/31/94			
H	w06-0283	MHT	7/27/06	chr	G.PETERS	4/13/94			
sheet index		revision	H	H	H				
sheet		1	2	3					

form: A3

PRODUCT NUMBER  
SEE TABLE

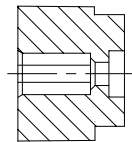
NOTES:

- ① PRODUCT NUMBERING CODE:  
50776 - X YYY Z LF  
LEAD FREE (OPTIONAL)  
TAIL LENGTH SEE TABLE  
NO. OF POSITIONS SEE NOTE 2  
PLATING SEE TABLE  
BASE NUMBER

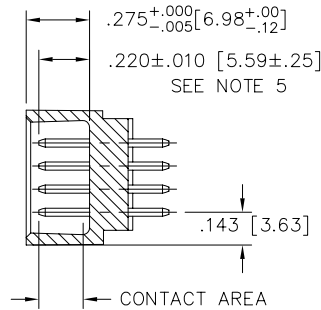
PRODUCT NUMBERING CODE FOR  
SELECT LOAD/SPECIAL PART NUMBERS:

- 50776 - XXYYY LF  
LEAD FREE (OPTIONAL)  
SEQUENCE NUMBER  
ALWAYS 'XX'  
BASE NUMBER

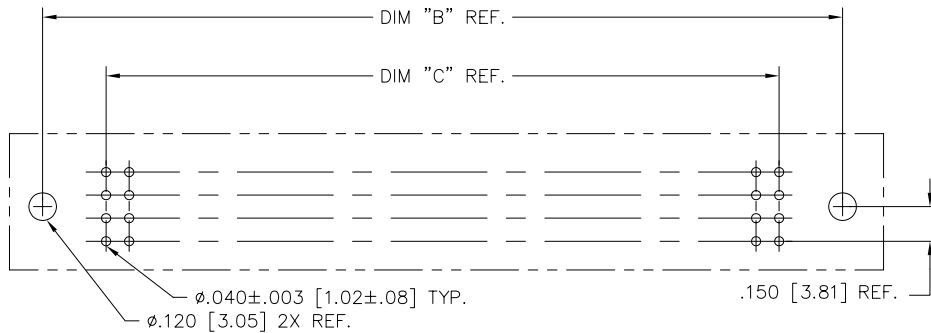
- ② THIS PRODUCT IS CONFIGURED IN SIZES OF 6 thru 80 COLUMNS IN INCREMENTS OF ONE.  
i.e.: 6,7,8,9,.....78,79,80.
- ③ HOUSING MATERIAL: GLASS AND MINERAL FILLED HIGH TEMP. THERMOPLASTIC. FLAME RETARDANT PER UL94V-0. COLOR: BLACK.  
PIN MATERIAL: PHOS BRONZE
- ④ MANUFACTURE'S NAME, PART NUMBER AND LOT CODE TO APPEAR ON THIS SURFACE PER BUS-12-108.
- ⑤ REFERENCE DRAWING 50810 FOR F.M.L.B. AVAILABLE OPTIONS AND WORKSHEET.
- ⑥ LENGTH FORMULAS  
DIM "A" =  $.100/2.54 \times \text{NO. OF COLUMNS} + .750/19.05$   
DIM "B" =  $.100/2.54 \times \text{NO. OF COLUMNS} + .450/11.43$   
DIM "C" =  $.100/2.54 \times \text{NO. OF COLUMNS} - .100/2.54$
7. THIS PRODUCT (WITH "LF" SUFFIX) MEETS EUROPEAN UNION DIRECTIVES AND OTHER COUNTRY REGULATIONS AS DESCRIBED IN GS-22-008.
8. THIS HOUSING WILL WITHSTAND EXPOSURE TO 260° PEAK TEMPERATURE FOR 10-30 SECONDS IN A CONVECTION, INFRA-RED OR VAPOR PHASE OVEN.



SECTION U-U



SECTION X-X



RECOMMENDED PCB LAYOUT  
(ALL HOLES LOCATED ON .100/2.54 GRID UNLESS OTHERWISE SPECIFIED)

mat'l. code NOTE 3		surface ISO 1302 ✓	tolerance ISO 406 ISO 1101	projection ⊕	product family HPC
ltr	ecn	no	dr	date	tolerances unless otherwise specified
H					angles linear .xx±.01/.3
					0'±2' .xxx±.005/.13
					.xxx±.0020/.051
		dr	P.PARSONS	4/5/94	INCH/MM
		enr	J.AFTON	3/31/94	scale 1:1
		chr	G.PETERS	4/13/94	dwg no
		appd	S.CLARK	4/14/94	sheet 2 of 3 size
sheet	revision				50776 A3
index	sheet				type Product Customer Drawing



FCIconnect.com

Copyright FCI

