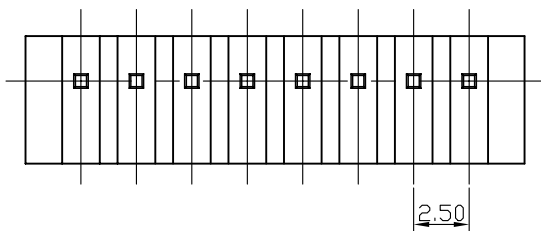
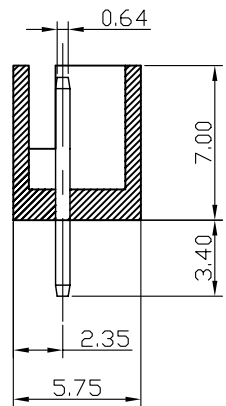
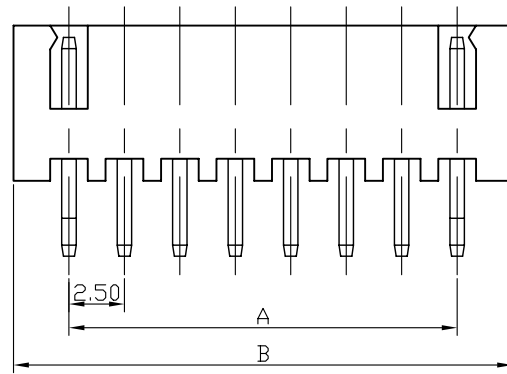


RECOMMENDED P.C.BOARD HOLE DIMM.



Specifications

Current Rating: 3A AC, DC
 Voltage Rating: 250V AC Maximum
 Operating Temp: -25°C ~ +85°C
 Contact Resistance: 10MΩ Max
 Insulation Resistance: 1000MΩ Min
 Terminal Material: Brass/Tin-plated
 Material: Nylon 66, UL94V-0

Poles	Dimension mm (in.)		Part No.
	A	B	
2	2.50 (0.098)	7.50 (0.295)	XH-D-02
3	5.00 (0.197)	10.00 (0.394)	XH-D-03
4	7.50 (0.295)	12.50 (0.492)	XH-D-04
5	10.00 (0.394)	15.00 (0.591)	XH-D-05
6	12.50 (0.492)	17.50 (0.689)	XH-D-06
7	15.00 (0.591)	20.00 (0.787)	XH-D-07
8	17.50 (0.689)	22.50 (0.886)	XH-D-08
9	20.00 (0.787)	25.00 (0.984)	XH-D-09
10	22.50 (0.886)	27.50 (1.082)	XH-D-10
11	25.00 (0.984)	30.00 (1.181)	XH-D-11
12	27.50 (1.082)	32.50 (1.280)	XH-D-12
13	30.00 (1.181)	35.00 (1.378)	XH-D-13
14	32.50 (1.280)	37.50 (1.476)	XH-D-14
15	35.00 (1.378)	40.00 (1.575)	XH-D-15
16	37.50 (1.476)	42.50 (1.673)	XH-D-16
17	40.00 (1.575)	45.00 (1.772)	XH-D-17
18	42.50 (1.673)	47.50 (1.870)	XH-D-18
19	45.00 (1.772)	50.00 (1.969)	XH-D-19
20	47.50 (1.870)	52.50 (2.067)	XH-D-20

MORETHANALL
CONNECTORS
ASSEMBLIES

煜倫有限公司

PART NO. XH-D-xx

DWG NO. XH-D-xx

FILE NO.

UNIT / mm

SCALE 1:1

APPROVED BY CY

DRAWING BY

PROJECTION

TOLERANCES ARE

.X
.XX
.XXX
AWG

DESCRIPTION:

AREA	REVISIONS	HK	DATE