

UNLESS OTHERWISE NOTED TOLERANCES ARE:
 ONE PLACE DECIMALS ±.1 [.3] THREE PLACE DECIMALS ±.005 [.13]
 TWO PLACE DECIMALS ±.01 [.3] FOUR PLACE DECIMALS ±.0020 [.051]

TITLE: HI-TEMP TERMINAL MICRO-SRTIP
 DWG NO: HTMS-1XX-XX-XX-X-RA-XXX
 SHEET 1 OF 1

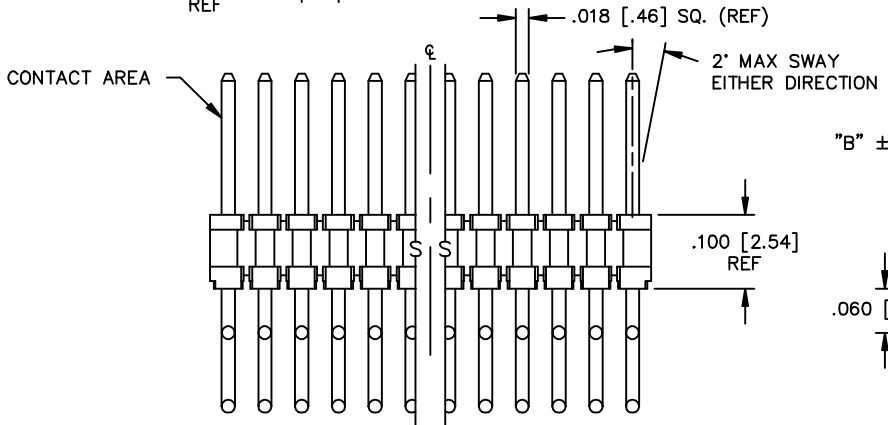
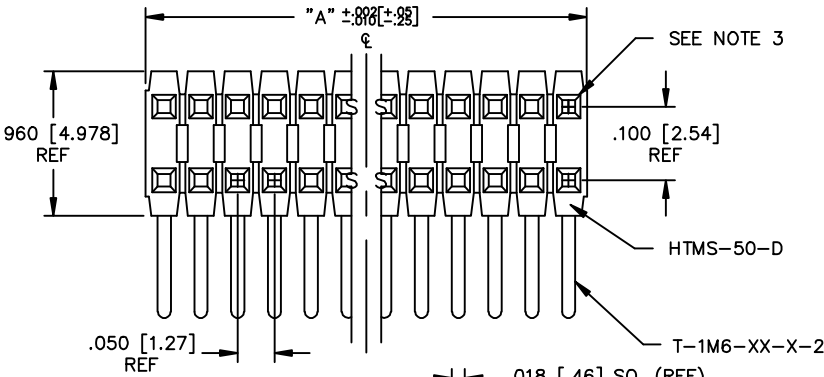
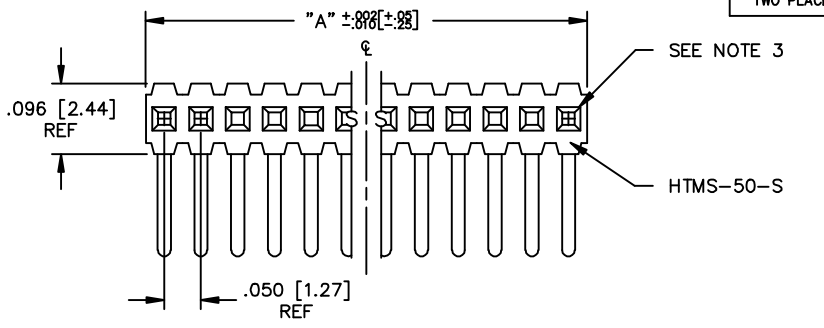


TABLE 1
RIGHT ANGLE

LEAD STYLE	PIN #1	PIN #2	"B"
-01	T-1M6-14-X-2	T-1M6-15-X-2	.230 [5.84]
-02	T-1M6-12-X-2	T-1M6-13-X-2	.100 [2.54]
-03	T-1M6-18-X-2	T-1M6-19-X-2	.125 [3.18]

PACKAGING TUBE TABLE

BODY STYLE	LEAD STYLE	TUBE	PLUG
HTMS-DOUBLE RIGHT ANGLE	-01, -02, -03	PT-1-24-02-66	TP-03
HTMS-SINGLE RIGHT ANGLE	-01, -02, -03	PT-1-24-01-66	TP-24

TABLE 2

LENGTH	"L"	LENGTH	"L"
-01	.440 [11.18]	-16	.825 [20.96]
-02	.410 [10.41]	-17	.320 [8.13]
-03	.610 [15.49]	-18	.450 [11.43]
-04	.505 [12.83]	-19	.650 [16.51]
-05	.705 [17.91]	-21	.505 [12.83]
-12	.425 [10.80]	-25	.330 [8.38]
-13	.625 [15.88]	-26	.373 [9.47]
-14	.555 [14.10]	-27	.398 [10.11]
-15	.755 [19.18]	-28	1.050 [26.67]

* REF FOR PIN LENGTH

HTMS-1XX-XX-XX-X-RA-XXX

BODY LENGTH SPEC
 EXPRESSED IN # POS PER ROW
 (-01 THRU -50)
 "A" = 'XX' x .050 [1.27]

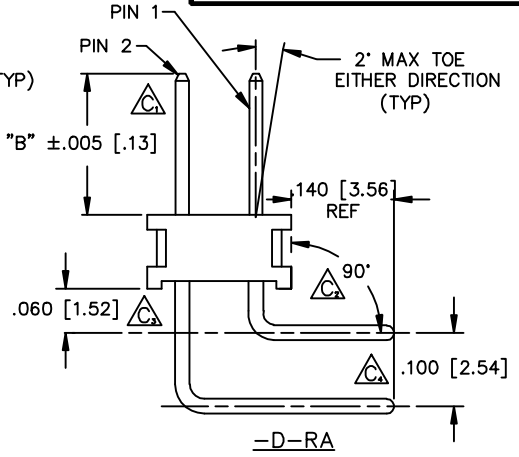
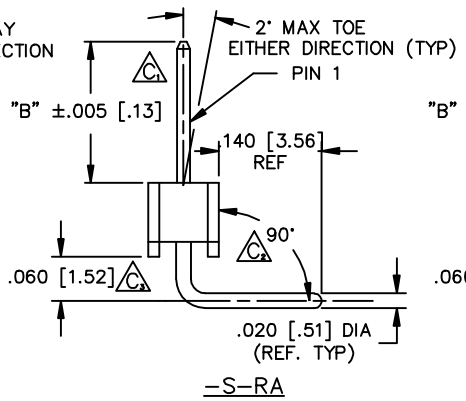
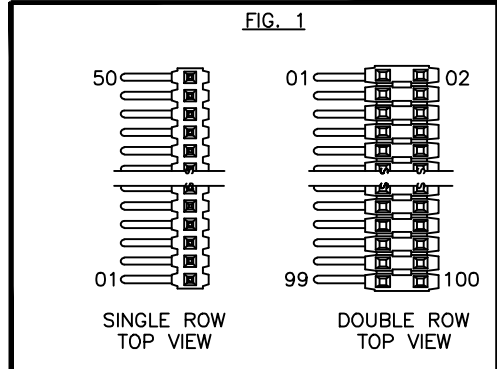
TERMINAL SPEC
 SEE TABLE 1

OPTION
 -POLARIZING SPECIFICATION
 XXX INDICATES POS. TO BE OMITTED
 (SEE FIG. 1)

OPTION
 -RA: RIGHT ANGLE

BODY SPECIFICATION
 -S: SINGLE (USE HTMS-50-S)
 -D: DOUBLE (USE HTMS-50-D)

PLATING SPECIFICATION
 -G: GOLD, SPECIFY -G
 -T: TIN, SPECIFY -T
 -S: SELECTIVE, SPECIFY -S
 -F: FLASH GOLD, SPECIFY -F
 -TM: MATTE TIN
 -SM: SELECTIVE HEAVY GOLD, MATTE TIN TAIL



- NOTES:
1. MAX ALLOWABLE BOW: .005 [.13] INCH/INCH.
 2. TERMINAL PUSHOUT FORCE: 2 lbs. MIN.
 3. MAX PIN ROTATION IN BODY: 2°.
 4. Δ REPRESENTS A CRITICAL DIMENSION FOR STATISTICAL PROCESS CONTROL USE.
 5. PACKAGE POSITIONS -08 THRU -50 IN PACKAGING TUBES; LAYER PACKAGE POSITIONS -01 THRU -07.
 6. CUT FLASH .010 [.25] MAX.

PROPRIETARY NOTE
 THIS DOCUMENT CONTAINS INFORMATION CONFIDENTIAL AND PROPRIETARY TO SAMTEC INC. AND SHALL NOT BE REPRODUCED OR TRANSFERRED TO OTHER DOCUMENTS OR DISCLOSED TO OTHERS OR USED FOR ANY PURPOSE OTHER THAN THAT FOR WHICH IT WAS OBTAINED WITHOUT THE EXPRESSED WRITTEN CONSENT OF SAMTEC INC.

Do not scale from this print

samtec MSC:WKTO HTMS:RANK

520 PARK EAST BLVD. NEW ALBANY, INDIANA 47150
 PHONE (812) 944-6733 P.O. BOX 1147
 CODE 55322

MADE BY: GREG REIDINGER 2-24-92
 CHECKED BY: ECKERT

ENG APPROVAL
 PAE

HTMS-1XX-XX-XX-X-RA-XXX
 SHEET 1 OF 1

PLOT SCALE 1= .1333