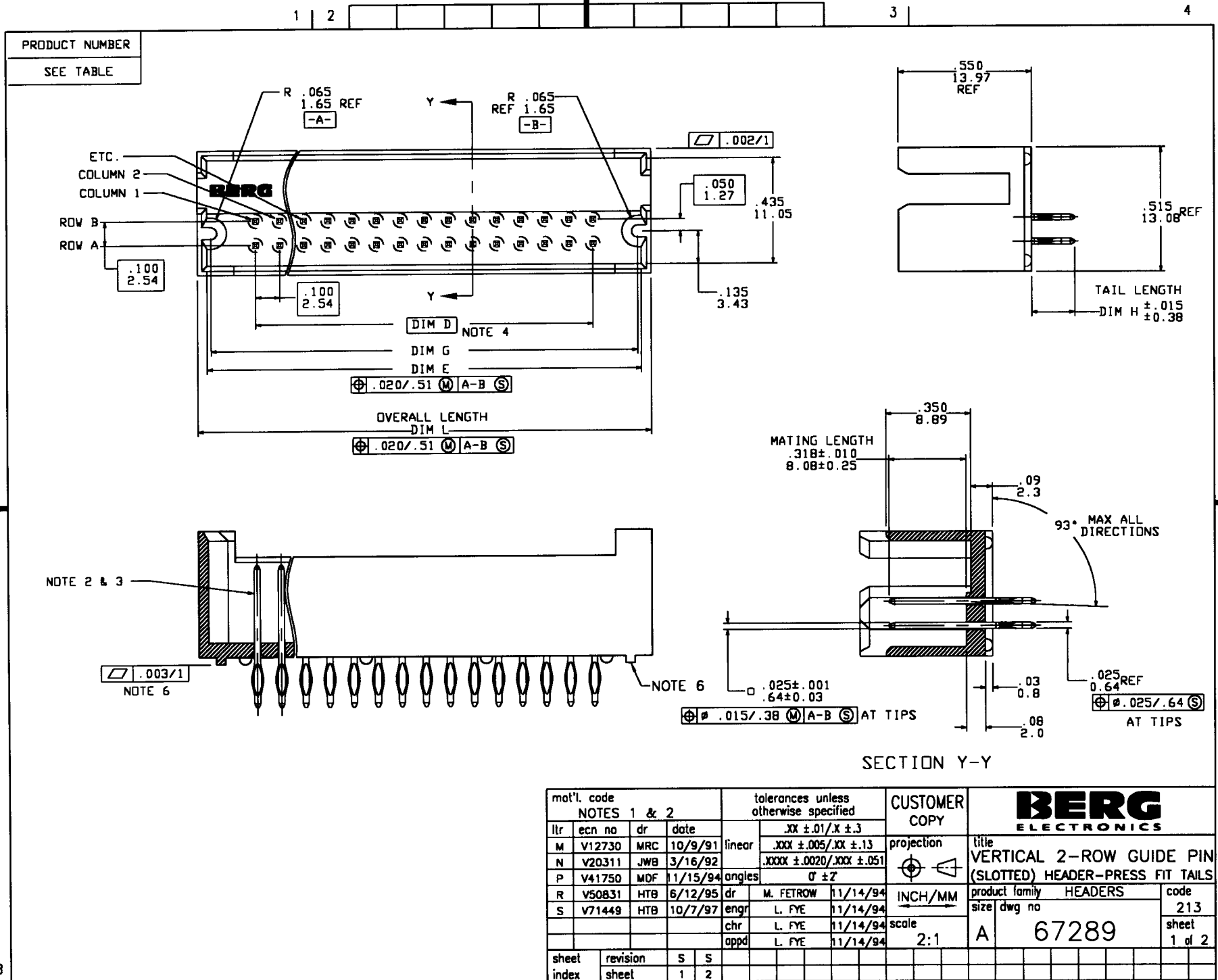


Tous droits strictement reserves. Reproduction ou communication a des tiers interdite sous quelque forme que ce soit sans autorisation écrite du propriétaire. Propriete de ©BERG ELECTRONICS. Droits de reproduction BERG ELECTRONICS INC.

All rights strictly reserved. Reproduction or issue to third parties in any form whatever is not permitted without written authority from the proprietor. Property of ©BERG ELECTRONICS Copyright BERG ELECTRONICS INC.



PRODUCT NUMBER
SEE TABLE

mat'l code				tolerances unless otherwise specified		CUSTOMER COPY	BERG ELECTRONICS	
l/r	ecn no	dr	date	linear	angular	projection	title	code
M	V12730	MRC	10/9/91	.XX ± .01 / .X ± .3	0° ± 2'	INCH/MM	VERTICAL 2-ROW GUIDE PIN (SLOTTED) HEADER-PRESS FIT TAILS	213
N	V20311	JWB	3/16/92	.XXX ± .005 / .XX ± .13		scale	product family HEADERS	sheet 1 of 2
P	V41750	MDF	11/15/94	.XXXX ± .0020 / .XXX ± .051		2:1	size dwg no	
R	V50831	HTB	6/12/95	dr	M. FETROW		A	
S	V71449	HTB	10/7/97	enr	L. FYE		67289	
				chr	L. FYE			
				appd	L. FYE			
sheet index	revision sheet	S 1	S 2				cage code	
							22526	



PRODUCT NUMBER NOTE 5	SIZE NOTE 5	TAIL LENGTH DIM H	DIM D	DIM G	DIM E	OVERALL LENGTH DIM L	PLATING
67289-XXX	2 x XXX	.177/4.50	NOTE 4	.37/9.4+D DIM	.40/10.2+D DIM	.48/12.2+D DIM	30u"/.76u MIN Au OVER 50u"/1.27u Ni
67290-XXX		.177/4.50					15u"/.38u MIN Au OVER 50u"/1.27u Ni
67291-XXX		.177/4.50					GOLD FLASH OVER 50u"/1.27u Ni
67292-XXX		.177/4.50					120u"/3.05u 93/7 Sn/Pb OVER 50u"/1.27u Ni
67958-XXX		.310/7.90					30u"/.76u MIN Au OVER 50u"/1.27u Ni
67961-XXX		.310/7.90					15u"/.38u MIN Au OVER 50u"/1.27u Ni
68251-XXX		.680/17.30					30u"/.76u MIN Au OVER 50u"/1.27u Ni
68509-XXX		.480/12.20					30u"/.76u MIN Au OVER 50u"/1.27u Ni
68521-XXX		.480/12.20					30u"/.76u MIN GXT™ OVER 50u"/1.27u Ni
68830-XXX		.680/17.30					15u"/.38u MIN Au OVER 50u"/1.27u Ni
68831-XXX		.480/12.20					15u"/.38u MIN Au OVER 50u"/1.27u Ni
68832-XXX		.310/7.90					15u"/.38u MIN GXT™ OVER 50u"/1.27u Ni
68833-XXX		.310/7.90					30u"/.76u MIN GXT™ OVER 50u"/1.27u Ni
68834-XXX		.177/4.50					15u"/.38u MIN GXT™ OVER 50u"/1.27u Ni
68835-XXX		.177/4.50					30u"/.76u MIN GXT™ OVER 50u"/1.27u Ni
68836-XXX		.680/17.30					30u"/.76u MIN GXT™ OVER 50u"/1.27u Ni
68837-XXX		.680/17.30					15u"/.38u MIN GXT™ OVER 50u"/1.27u Ni
68838-XXX		.480/12.20					15u"/.38u MIN GXT™ OVER 50u"/1.27u Ni
69275-XXX		.310/7.90					GOLD FLASH OVER 50u"/1.27u Ni
69276-XXX		.310/7.90					120u"/3.05u 93/7 Sn/Pb OVER 50u"/1.27u Ni
69277-XXX		.480/12.20					GOLD FLASH OVER 50u"/1.27u Ni
69278-XXX		.480/12.20					120u"/3.05u 93/7 Sn/Pb OVER 50u"/1.27u Ni
69279-XXX		.680/17.30					GOLD FLASH OVER 50u"/1.27u Ni
69280-XXX		.680/17.30					120u"/3.05u 93/7 Sn/Pb OVER 50u"/1.27u Ni
69283-XXX		.177/4.50					DUPLEX 15u"/.38u Au & 100u"/1.27u 60/40 SnPb OVER 50u"/1.27u Ni
69284-XXX		.177/4.50					DUPLEX 30u"/.76u Au & 100u"/1.27u 60/40 SnPb OVER 50u"/1.27u Ni
69285-XXX		.310/7.90					DUPLEX 15u"/.38u Au & 100u"/1.27u 60/40 SnPb OVER 50u"/1.27u Ni
69286-XXX		.310/7.90					DUPLEX 30u"/.76u Au & 100u"/1.27u 60/40 SnPb OVER 50u"/1.27u Ni
69287-XXX		.480/12.20					DUPLEX 15u"/.38u Au & 100u"/1.27u 60/40 SnPb OVER 50u"/1.27u Ni
69288-XXX		.480/12.20					DUPLEX 30u"/.76u Au & 100u"/1.27u 60/40 SnPb OVER 50u"/1.27u Ni
69289-XXX		.680/17.30					DUPLEX 15u"/.38u Au & 100u"/1.27u 60/40 SnPb OVER 50u"/1.27u Ni
69290-XXX	2 x XXX	.680/17.30	NOTE 4	.37/9.4+D DIM	.40/10.2+D DIM	.48/12.2+D DIM	DUPLEX 30u"/.76u Au & 100u"/1.27u 60/40 SnPb OVER 50u"/1.27u Ni

- NOTES: ① MOLDING MATERIAL: HI-TEMP RESIN PER UL 94V-0
COLOR: BLACK.
- ② TERMINAL MATERIAL: 3/4 HARD PHOS BRONZE UNS C5100.
- ③ PIN RETENTION TO BE 3 LBS/1.36 KG MIN PER PIN IN EITHER DIRECTION.
- ④ DIM D =(NO. OF COLUMNS-1)TIMES .100/2.54
- ⑤ -XXX REPRESENTS NO. OF COLUMNS (i.e. 2X5 PART IS -005)
-001 THRU -004 ARE NOT AVAILABLE
-005 THRU -050 ARE AVAILABLE
- ⑥ FLATNESS IS MEASURED FROM THE BOTTOM OF THE END STANDOFFS.

mot'l. code		tolerances unless otherwise specified		CUSTOMER COPY		BERG ELECTRONICS	
l/r	ecn no	dr	date	linear	.XX ±.01/XX ±.3	projection	title VERTICAL 2-ROW GUIDE PIN (SLOTTED) HEADER-PRESS FIT TAILS
S					.XXX ±.005/XX ±.13		
				angles	.XXX ±.0020/XXX ±.051	INCH/MM	product family HEADERS code size dwg no 213
				dr	0 ±Z	scale	
				engr	M. FETROW 11/14/94	1:1	A
				chr	L. FYE 11/14/94		67289
				appd	L. FYE 11/14/94		sheet 2 of
sheet index	revision sheet		1				