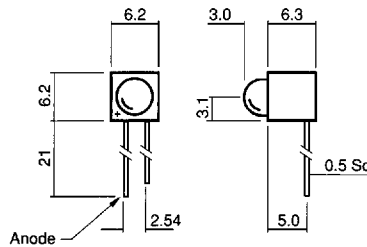


104 Series: | Ø 5 mm LED 90° PCB Mounting Low Profile

- Conforms to DIN std
- Low current models
- MLQ 50
- Colour combinations to order
- MTBF 100,000 hrs, low current models 250,000 hrs



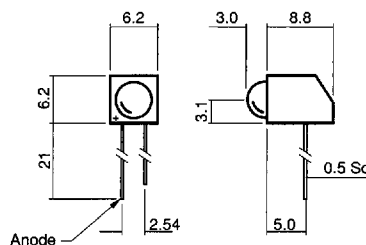
Scale 1 : 1
Dimensions in mm (Typical)

Ordering information and technical characteristics (Ta = 25°C)

Order code	Colour	Typ Fwd Voltage Vf @ Iopr	Forward Current Iopr	Luminous Intensity Iv @ Iopr	Wave Length λp	Viewing Angle 2θ1/2	Operating Temp Topr	Storage Temp Tstg
104 - 555 - 01	Red	1.8	2	0.5	650	44		
104 - 561 - 01	Yellow	1.9	2	0.5	585	44	- 40	- 50
104 - 564 - 01	Green	1.9	2	1.0	563	44	to	to
104 - 555 - 04	Red	2.1	20	13	650	44	+ 85	+ 100
104 - 561 - 04	Yellow	2.2	20	13	585	44		
104 - 564 - 04	Green	2.2	20	20	563	44		
	Diffused	V	mA	mcd	nm	deg	°C	°C

106 Series: | Ø 5 mm LED 90° PCB Mounting Low Profile

- Extra-firm anchorage on PCB
- MLQ 50
- Customised lead lengths
- Low profile projection
- MTBF 100,000 hrs, low current models 250,000 hrs



Scale 1 : 1
Dimensions in mm (Typical)

Ordering information and technical characteristics (Ta = 25°C)

Order code	Colour	Typ Fwd Voltage Vf @ Iopr	Forward Current Iopr	Luminous Intensity Iv @ Iopr	Wave Length λp	Viewing Angle 2θ1/2	Operating Temp Topr	Storage Temp Tstg
106 - 555 - 01	Red	1.8	2	0.5	650	44		
106 - 561 - 01	Yellow	1.9	2	0.5	585	44	- 40	- 50
106 - 564 - 01	Green	1.9	2	1.0	563	44	to	to
106 - 555 - 04	Red	2.1	20	13	650	44	+ 85	+ 100
106 - 561 - 04	Yellow	2.2	20	13	585	44		
106 - 564 - 04	Green	2.2	20	20	563	44		
	Diffused	V	mA	mcd	nm	deg	°C	°C