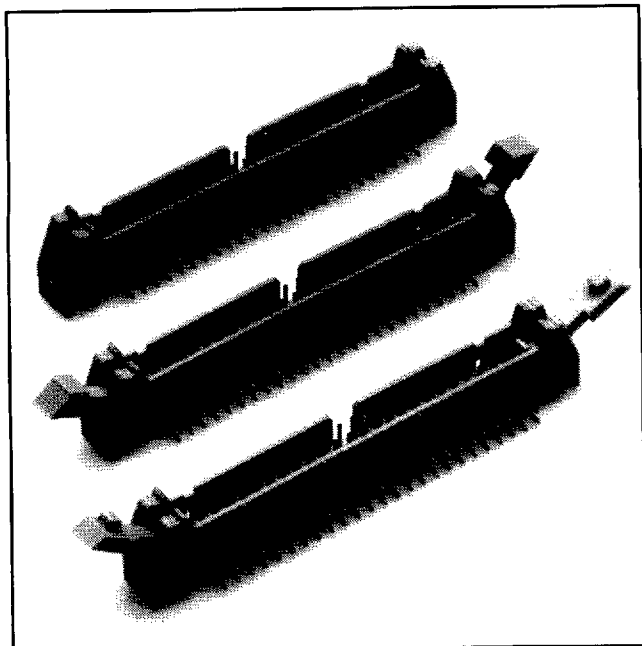


# .100" x .100" Latch/Ejector Header

Right Angle, 4 Wall, High Temp



- Military (with 3M's 3518 polarizing key) and center bump polarizations available
- Optional ejector latches
- Mounting holes for securing header to board
- Shrouded to protect against physical and chemical pin damage
- Solder tail and wrap tail options
- High temperature

84

TS-0492-06  
Sheet 1 of 4

## Physical

### Insulation

Material: Glass Filled Polyester (PBT)  
Flammability: UL 94V-0  
Color: Beige

### Contact

Material: Phosphor Bronze (C510)  
Plating  
Underplate: 100  $\mu$ " [ 2.54  $\mu$ m ] Nickel — QQ-N-290, Class 2  
Wiping Area: 30  $\mu$ " [ 0.76  $\mu$ m ] Gold — MIL-G-45204, Type II, Grade C  
Solder Tails: 200  $\mu$ " [ 5.08  $\mu$ m ] 60/40 Tin Lead — MIL-P-81728  
Marking: 3M Logo, Part Identification Number and Orientation Triangle

## Electrical

Current Rating: 1 A  
Insulation Resistance:  $>1 \times 10^9 \Omega$  at 500 Vdc  
Withstanding Voltage: 1000 Vrms at Sea Level

## Environmental

Temperature Rating:  $-55^\circ\text{C}$  to  $+105^\circ\text{C}$   
Processing: Maximum  $235^\circ\text{C}$ , with 90 seconds over  $215^\circ\text{C}$

UL File No.: E68080  
CSA File No.: LR 40971

3M Electronic Products Division

6801 River Place Blvd.  
Austin, TX 78726-9000

9005413 0000229 977

# .100" x .100" Latch/Ejector Header

Right Angle, 4 Wall, High Temp

Sheet 2 of 4

Pin Qty	3M Part Number	Dimensions						Polarization Notches Provided	
		A	B	C	D		H		
10	3446-50XX	1.26 [32.0]	.71 [18.0]	.865 [21.97]	2.00	[50.8]	1.14	[29.0]	C
	-52XX				2.18	[55.4]	1.32	[33.5]	
	-53XX				2.10	[53.3]	1.24	[31.5]	
10	3662-50XX	1.26 [32.0]	.71 [18.0]	.865 [21.97]	2.00	[50.8]	1.14	[29.0]	B
	-52XX				2.18	[55.4]	1.32	[33.5]	
	-53XX				2.10	[53.3]	1.24	[31.5]	
14	3314-50XX	1.46 [37.1]	.91 [23.1]	1.065 [27.05]	2.20	[55.9]	1.14	[29.0]	B C
	-52XX				2.38	[60.5]	1.32	[33.5]	
	-53XX				2.30	[58.4]	1.24	[31.5]	
16	3408-50XX	1.56 [39.6]	1.01 [25.7]	1.165 [29.59]	2.30	[58.4]	1.14	[29.0]	A B C
	-52XX				2.48	[63.0]	1.32	[33.5]	
	-53XX				2.49	[61.0]	1.24	[31.5]	
20	3428-50XX	1.76 [44.7]	1.21 [30.7]	1.365 [34.67]	2.50	[63.5]	1.14	[29.0]	A B C
	-52XX				2.68	[68.1]	1.32	[33.5]	
	-53XX				2.60	[66.0]	1.24	[31.5]	
24	3627-50XX	1.96 [49.8]	1.41 [35.8]	1.565 [39.75]	2.50	[63.5]	1.14	[29.0]	A B C
	-52XX				2.68	[68.1]	1.32	[33.5]	
	-53XX				2.60	[66.0]	1.24	[31.5]	
26	3429-50XX	2.06 [52.3]	1.51 [38.4]	1.665 [42.29]	2.80	[71.1]	1.14	[29.0]	A B C
	-52XX				2.98	[75.7]	1.32	[33.5]	
	-53XX				2.90	[73.7]	1.24	[31.5]	
30	3440-50XX	2.26 [57.4]	1.71 [43.4]	1.865 [47.37]	3.00	[76.2]	1.14	[29.0]	A B C
	-52XX				3.18	[80.8]	1.32	[33.5]	
	-53XX				3.10	[78.7]	1.24	[31.5]	
34	3431-50XX	2.46 [62.5]	1.91 [48.5]	2.065 [52.45]	3.20	[81.3]	1.14	[29.0]	A B C
	-52XX				3.38	[85.9]	1.32	[33.5]	
	-53XX				3.30	[83.8]	1.24	[31.5]	
40	3432-50XX	2.76 [70.1]	2.21 [56.1]	2.365 [60.07]	3.50	[88.9]	1.14	[29.0]	A B C
	-52XX				3.68	[93.5]	1.32	[33.5]	
	-53XX				3.60	[91.4]	1.24	[31.5]	
50	3433-50XX	3.26 [82.8]	2.71 [68.8]	2.865 [72.77]	4.00	[101.6]	1.14	[29.0]	A B C
	-52XX				4.18	[106.2]	1.32	[33.5]	
	-53XX				4.10	[104.1]	1.24	[31.5]	
60	3372-50XX	3.76 [95.5]	3.21 [81.5]	3.365 [85.47]	4.50	[114.3]	1.14	[29.0]	A B C
	-52XX				4.68	[118.9]	1.32	[33.5]	
	-53XX				4.60	[116.8]	1.24	[31.5]	
64	3764-50XX	3.96 [100.7]	3.41 [86.6]	3.565 [90.55]	4.70	[119.4]	1.14	[29.0]	A B C
	-52XX				4.88	[124.0]	1.32	[33.5]	
	-53XX				4.80	[121.9]	1.24	[31.5]	

3M Part No. Suffix	Contact Tail	Dim E	Dim F		
-5XX2	Solder Tail for .062 [1.57] Thick PC Board	.112 [2.84]	.0245 ± .0005 [0.622]	with .028 ± .001 [0.71]	Diagonals
-5X03	Solder Tail for .094 to .125 [2.39 to 3.18] Thick PC Board	.155 [3.94]	.0245 ± .0005 [0.622]	with .028 ± .001 [0.71]	Diagonals

**Notes:**

- Notches A & C will accommodate 3M Polarizing Keys (3M Part Number 3518 or M3518).
- Accepts rear and front entry: mounting hardware: #4-24 thread cutting screw, 3M Part #3341-5 (.116 [2.95] dia mounting hole). Front Entry (prior to installation of Latch): #2-56 bolt and nut. 3M Part #3341-6 (.106 [2.69] dia mounting hole).
- The recommended PCB hole size for the kinked tail positions on the .112" solder tail connector is .035" ± .002.

**Inch**  
[mm]

Tolerance Unless Noted			
	.0	.00	.000
Inch	±.1	±.01	±.005

[ ] Dimensions for Reference Only

## Ordering Information

N XXXX-5XXX

3M Part Number

Ejector/Latch System

- 0 = No Ejector/Latch
- 2 = Short Ejector/Latch (when non-strain relief socket is used.)
- 3 = Long Ejector/Latch (when socket with strain relief is used.)
- 4 = Ejector Only

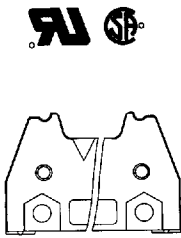
Tail

- 02 = Solder Tails for .062 [1.57] Thick Board.
- K2 = Kinked Solder Tails for .062 [1.57] Thick Board.
- 03 = Solder Tails for .094 to .125 [2.39 to 3.18] Thick Board.

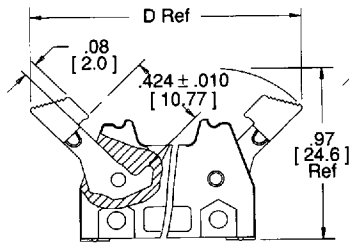
# .100" x .100" Latch/Ejector Header

Right Angle, 4 Wall, High Temp

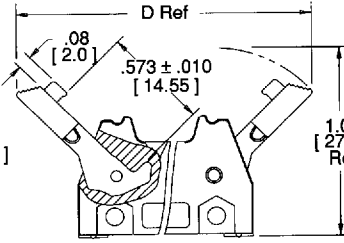
-50XX  
Header With  
No Ejector/Latch



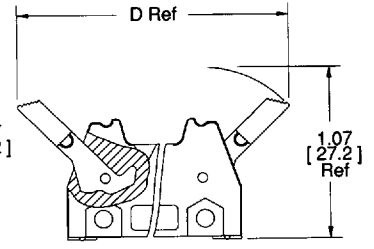
-52XX  
Header With  
Short Ejector/Latch  
(3M Part No. N3505-2)  
for 3M Sockets Without  
Strain Relief



-53XX  
Header With  
Long Ejector/Latch  
(3M Part No. N3505-3)  
for 3M Sockets With  
Strain Relief

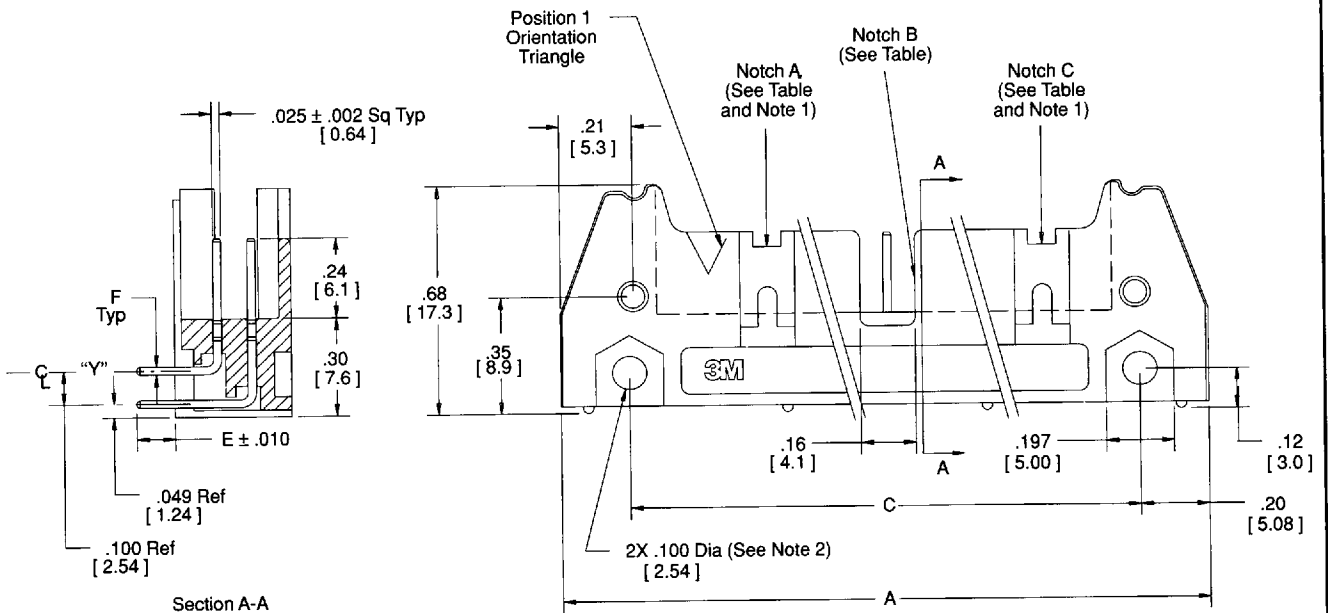
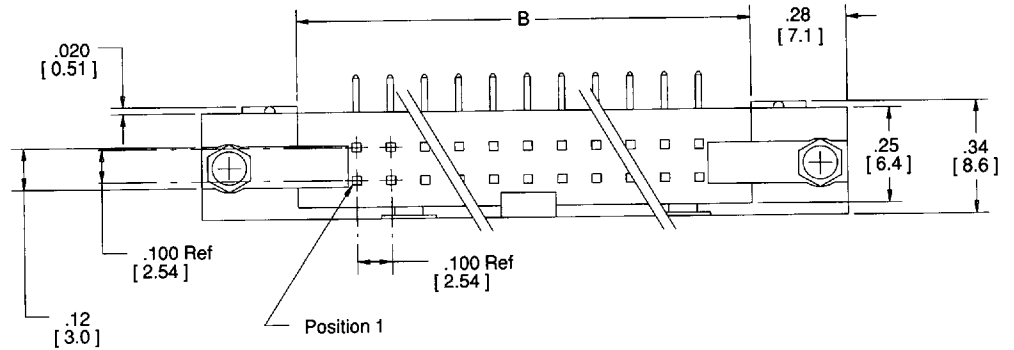


-54XX  
Header With  
Ejector Only  
(3M Part No. 3505-4)



Note - This Ejector  
is a Nickel Plated  
Zinc Alloy Casting.

Sheet 3 of 4



TS-0492-06

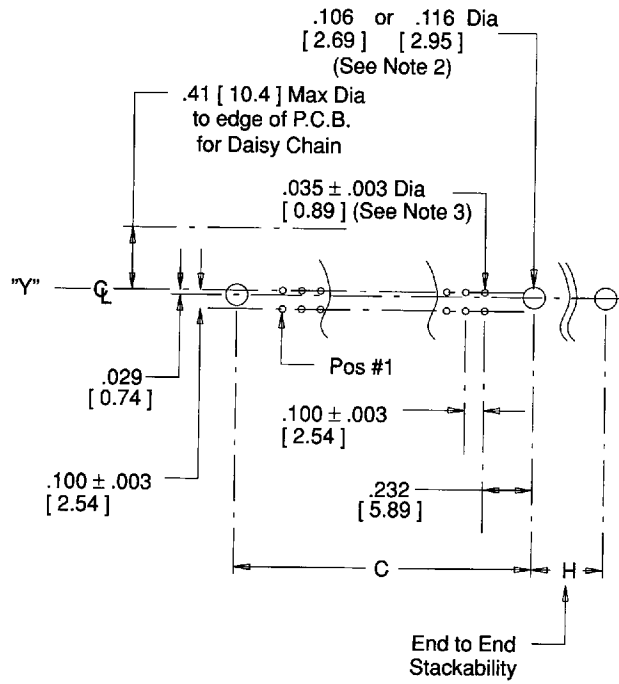
3M Electronic Products Division

6801 River Place Blvd.  
Austin, TX 78726-9000

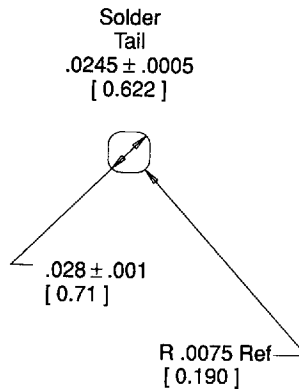
9005413 0000231 525

# .100" x .100" Latch/Ejector Header

Right Angle, 4 Wall, High Temp



Recommended Mounting Hold Pattern



Pin Cross Section

Sheet 4 of 4

TS-0492