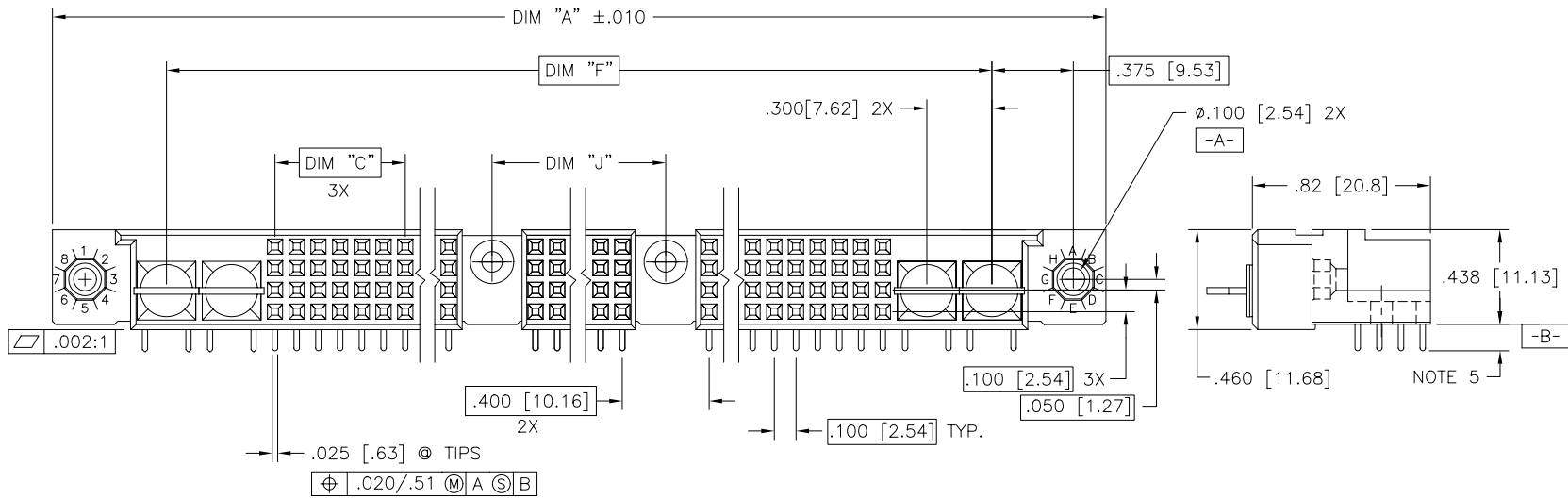
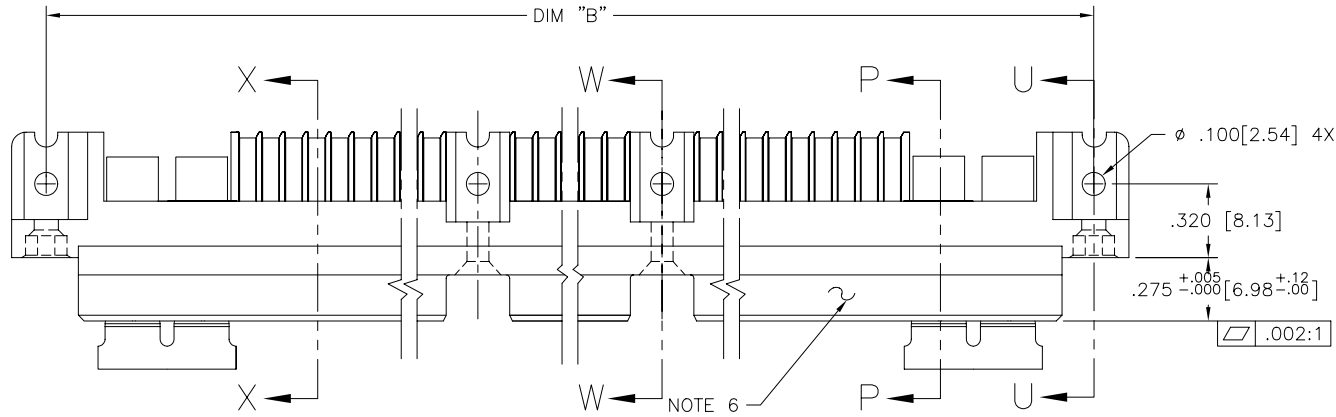


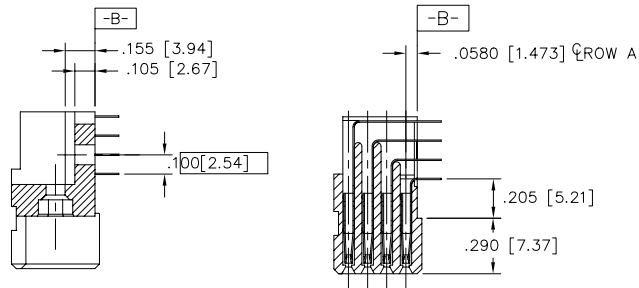
PRODUCT NUMBER  
SEE NOTE 1



mat'l. code NOTE 3		surface ISO 1302 <input checked="" type="checkbox"/>		tolerance ISO 406 ISO 1101		projection 		product family HPC	
ltr		ecn no		date		tolerances unless otherwise specified		title	
A	v23463	JM	10/19/92	angles	linear	.xx $\pm .01/.3$	INCH/MM		4 ROW R/A RECETACLE
B	v40245	PDP	1/13/94			.xxx $\pm .005/.13$	scale 1:1		SOLDER TAIL, 2 G.P., 4 P.P.
C	v91216	HTB	5/18/99	$\sigma \pm 2'$		.xxxx $\pm .0020/.051$			dwg no
D	v00255	LSS	1/13/00	dr	S. SHEAFFER	10/06/92			sheet 1 of 2 size
E	M06-0261	MNR	7/10/06	enfr	S. CLARK	10/06/92	50572		A3
				chr	S. CLARK	10/06/92	type		Product Customer Drawing
				appd	S. CLARK	10/06/92			
sheet index	revision sheet	E	E						
		1	2						

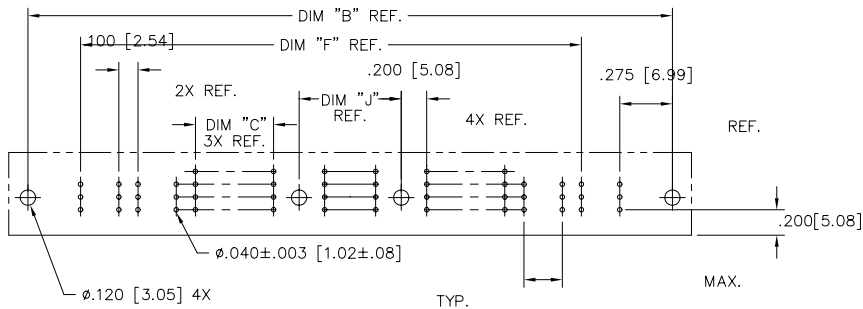
form: A3

PRODUCT NUMBER	DIM.	LENGTH FORMULAS
SEE NOTE 1	DIM A	.100/2.54 X NO. OF COLUMNS + 2.55/64.8
	DIM B	.100/2.54 X NO. OF COLUMNS + 2.250/57.15
	DIM C	.100/2.54 X NO. OF COLUMNS DIVIDED BY 2 - .100/2.54
	DIM F	.100/2.54 X NO. OF COLUMNS + 1.500/38.10
	DIM J	.100/2.54 X NO. OF COLUMNS DIVIDED BY 3 + .300/7.62

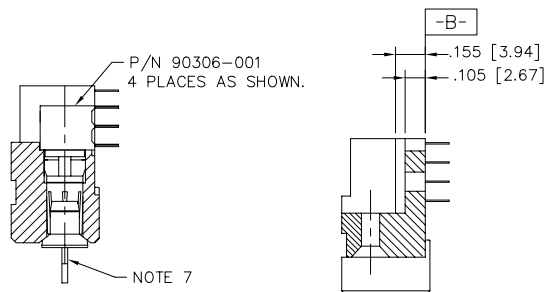


SECTION U-U

SECTION X-X



RECOMMENDED PCB LAYOUT  
(ALL HOLES LOCATED ON .100 [2.54] GRID UNLESS OTHERWISE SPECIFIED)



SECTION P-P

SECTION W-W

NOTES:

- PRODUCT NUMBERING CODE:  
50572 - X YYYZ  
TAIL LENGTH (NOTE 5)  
NO. OF POSITIONS (NOTE 2)  
PLATING (NOTE 4)  
BASE NUMBER
- PRODUCT NUMBERING CODE FOR SELECT LOAD PART NUMBERS:  
50572 - XXYYY  
SEQUENCE NUMBER  
ALWAYS 'XX'  
BASE NUMBER
- THIS PRODUCT IS CONFIGURED IN SIZES OF 30 THRU 138 COLUMNS IN INCREMENTS OF TWO. i.e.: 30,33,36,39.....135,138.
- HOUSING MATERIAL: GLASS AND MINERAL FILLED HIGH-TEMP THERMOPLASTIC FLAME RETARDANT PER UL94V-0 COLOR BLACK  
CONTACT MATERIAL: BeCu
- PLATING CONTACT AREA OPTIONS:  
1 = 30u"/.76u GOLD  
3 = 50u"/1.27u GOLD  
5 = 30u"/.76u GXT  
ALL SOLDER TAILS SnPb  
POWER CONTACTS 30u"/.76u GOLD
- TAIL LENGTH OPTIONS:  
E = .125±.010 / 3.18±.25  
F = .145±.010 / 3.68±.25  
H = .180±.010 / 4.57±.25  
ALL POWER TAILS = .145 / 3.68
- MANUFACTURE'S NAME, PART NUMBER AND LOT CODE TO APPEAR ON THIS SURFACE PER BUS-12-108.
- POWER SOCKET LOCATOR(P/N 50233) TO BE REMOVED AFTER SOLDERING OPERATION.
- FOR DOCUMENTATION MENU, SEE SPEC. BUS-01-057.

mat'l. code		surface ISO 1302 ✓	tolerance ISO 406 ISO 1101	projection INCH/MM	product family HPC
ltr	ecn	no	dr	date	tolerances unless otherwise specified
E					angles linear .xx ±.01/.3 .xxx ±.005/.13 .xxxx ±.0020/.051
dr S. SHEAFFER 10/06/92					scale 1:1
enr S. CLARK 10/06/92					FCJ
chr S. CLARK 10/06/92					
appd S. CLARK 10/06/92					
sheet index	revision sheet				title 4 ROW R/A RECETACLE SOLDER TAIL, 2 G.P., 4 P.P.
					dwg no 50572
					sheet 2 of 2 size A3
					type Product Customer Drawing