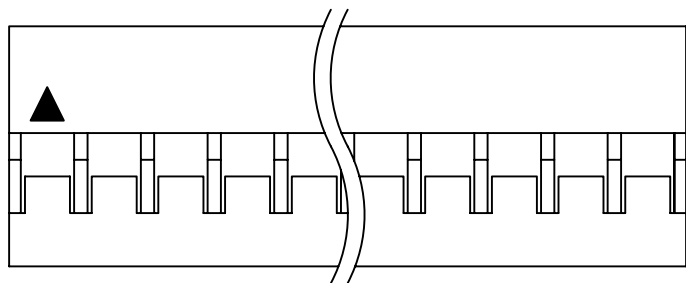
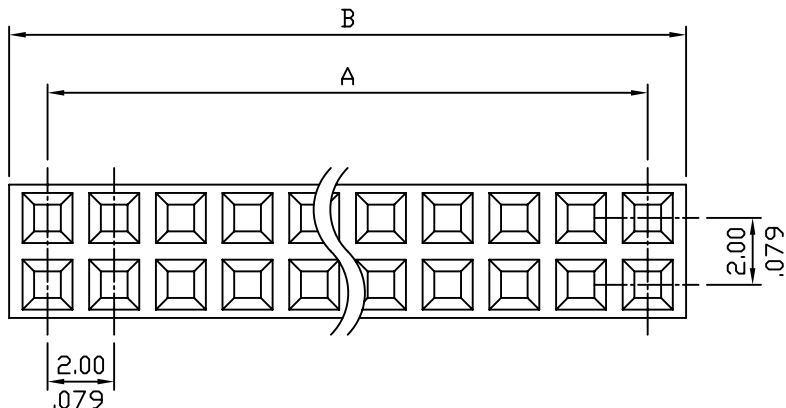


\*\*\* 2066 Series \*\*\*

RoHS COMPLIANT

Material:

Insulator: Thermoplastic



Circuits	Dim A	Dim B	Circuits	Dim A	Dim B
4	2.000(.079)	4.30(.169)	34	32.000(1.260)	34.30(1.350)
6	4.000(.157)	6.30(.248)	36	34.000(1.339)	36.30(1.429)
8	6.000(.236)	8.30(.326)	38	36.000(1.417)	38.30(1.508)
10	8.000(.315)	10.30(.406)	40	38.000(1.496)	40.30(1.587)
12	10.000(.394)	12.30(.484)	42	40.000(1.575)	42.30(1.665)
14	12.000(.472)	14.30(.563)	44	42.000(1.654)	44.30(1.744)
16	14.000(.551)	16.30(.642)			
18	16.000(.630)	18.30(.720)			
20	18.000(.709)	20.30(.799)			
22	20.000(.787)	22.30(.878)			
24	22.000(.866)	24.30(.957)			
26	24.000(.945)	26.30(1.035)			
28	26.000(1.024)	28.30(1.114)			
30	28.000(1.102)	30.30(1.193)			
32	30.000(1.181)	32.30(1.272)			

				<b>leoco</b> LEOCO CORPORATION		APPROVED:		PART NO.:									
				GENERAL TOLERANCES: (UNLESS SPECIFIED)		DATE:		2066S**0000									
D	ES081001					CHECKED:		TITLE:									
						DATE:		HOUSING									
C	ES060831					DRAWN:		DRAWING NO.:									
						DATE:		206602S									
B	ES050839							UNITS		SCALE		SIZE		SHEET		REV.	
A	DWG REL							mm inch		4:1		A4		1/1		D	
REV.	ECO. NO.	CHG.	APP.	ANGULAR ± ( 1° )													