

**SPECIFICATIONS**  
 Voltage rating: 600 VAC/VDC  
 Current rating: See table, page 2  
 Housing material: Nylon 66, UL 94V-2  
 Contact resistance: 10 milliohms max.  
 Withstanding: 1500 VAC/min.  
 Operating temp.: -40°C to +105°C

**RoHS compliant**

A=4.2 X (Pos./2 - 1)  
 B=4.2 X Pos./2 + 1.2  
 C=4.2 X Pos./2 + 4.8

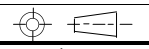
Series	Style	Pins	Mounting
CMF	9360A	XX	XX
Mini fit power connector, .165" (4.2mm)	9360A	02-12	[blank]=Standard F=Flanges P=Pins

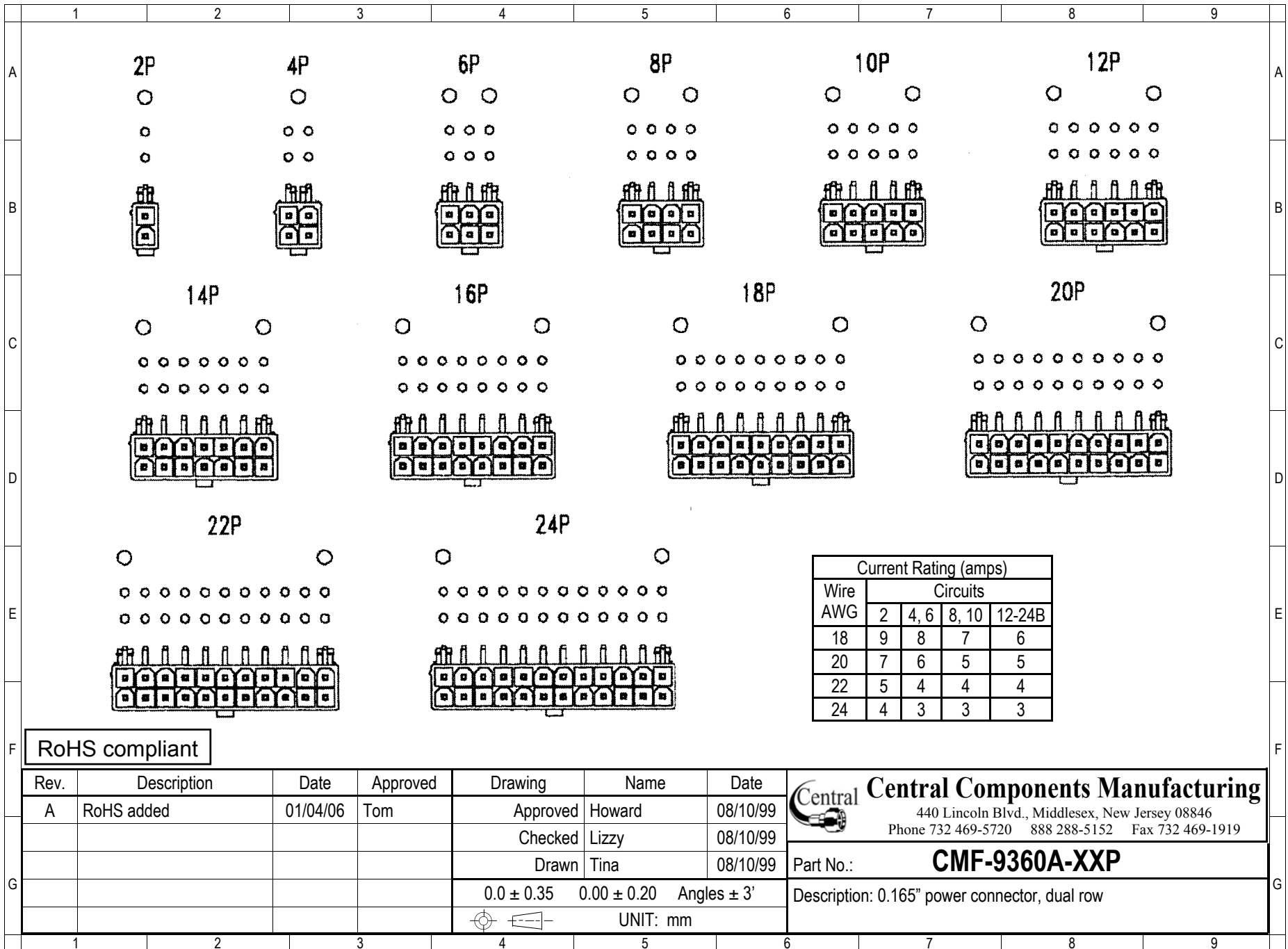
Rev.	Description	Date	Approved	Drawing	Name	Date
A	RoHS added	01/04/06	Tom	Approved	Howard	08/10/99
				Checked	Lizzy	08/10/99
				Drawn	Tina	08/10/99
				0.0 ± 0.35	0.00 ± 0.20	Angles ± 3'
				UNIT: mm		

**Central Components Manufacturing**  
 440 Lincoln Blvd., Middlesex, New Jersey 08846  
 Phone 732 469-5720 888 288-5152 Fax 732 469-1919

Part No.: **CMF-9360A-XXP**

Description: 0.165" power connector, dual row





Wire AWG	Current Rating (amps)			
	Circuits			
	2	4, 6	8, 10	12-24B
18	9	8	7	6
20	7	6	5	5
22	5	4	4	4
24	4	3	3	3

RoHS compliant

Rev.	Description	Date	Approved	Drawing	Name	Date
A	RoHS added	01/04/06	Tom	Approved	Howard	08/10/99
				Checked	Lizzy	08/10/99
				Drawn	Tina	08/10/99
				0.0 ± 0.35	0.00 ± 0.20	Angles ± 3'
					UNIT: mm	

**Central Components Manufacturing**  
 440 Lincoln Blvd., Middlesex, New Jersey 08846  
 Phone 732 469-5720 888 288-5152 Fax 732 469-1919

Part No.: **CMF-9360A-XXP**

Description: 0.165" power connector, dual row