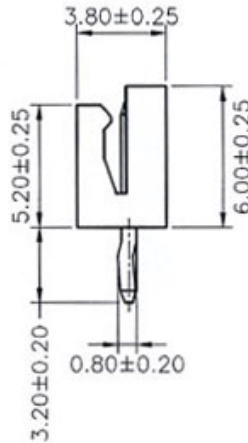
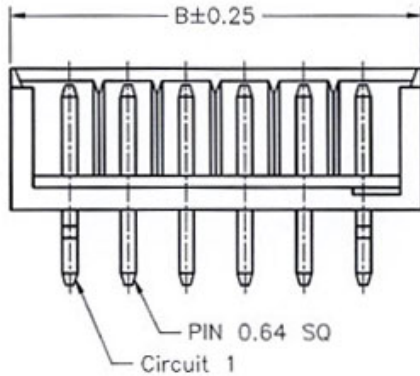
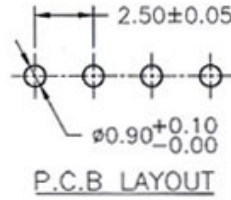
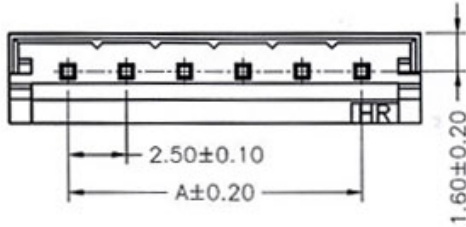
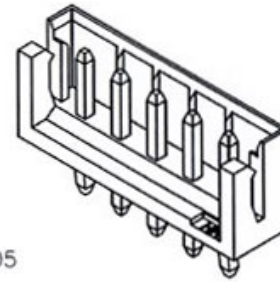


SPECIFICATIONS

Current Rating: 3A AC,DC
 Voltage Rating: 250V AC,DC
 Pin Material: Brass/Tin-Plated
 Contact Resistance: 10mΩ Max.
 Material: Nylon 66,UL94V-0, White
 Insulation Resistance: 1000MΩ Min.
 Withstanding: 800V AC/minute
 Temperature Range: -25°C ~ +85°C



Dimensions		
Pos.	A	B
2	2.50	7.50
3	5.00	10.00
4	7.50	12.50
5	10.00	15.00
6	12.50	17.50
7	15.00	20.00
8	17.50	22.50
9	20.00	25.00
10	22.50	27.50
11	25.00	30.00
12	27.50	32.50
13	30.00	35.00
14	32.50	37.50
15	35.00	40.00

RoHS compliant

Rev.	Description	Date	Approved	Drawing	Name	Date
				Approved	Howard	05/14/06
				Checked	Lizzy	05/14/06
				Drawn	Tina	05/14/06
				0.0 ± 0.35	0.00 ± 0.20	Angles ± 3'
				UNIT: mm		

Central Components Manufacturing
 440 Lincoln Blvd., Middlesex, New Jersey 08846
 Phone 732 469-5720 888 288-5152 Fax 732 469-1919

Part No.: **JS-J-2502WV-XX-TN**

Description: 2.50mm Pitch 180° Wafer