

Customer Information Sheet

DRAWING No.: M20-E01XXXX

SHEET 2 OF 2

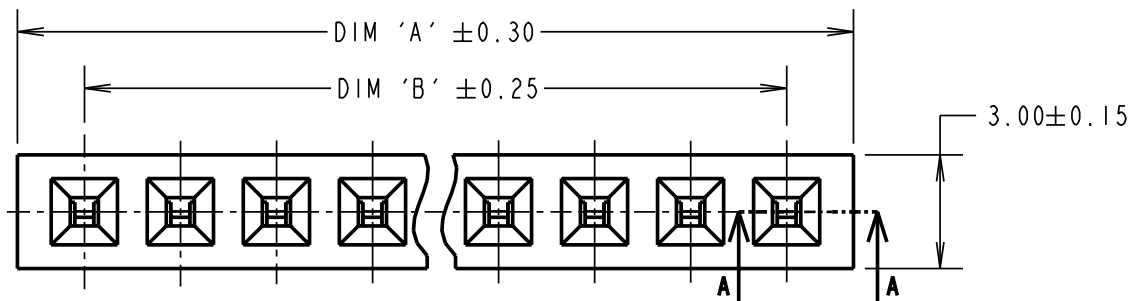
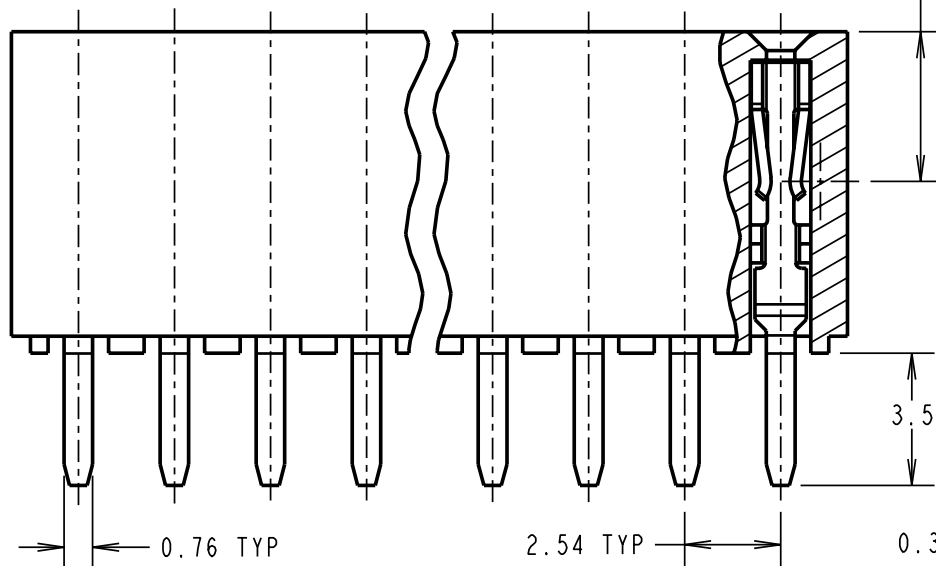
IF IN DOUBT - ASK

©

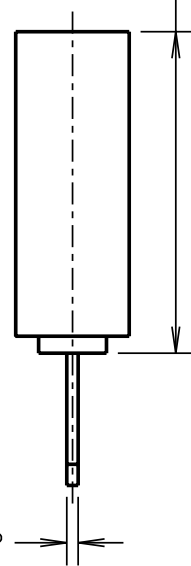
NOT TO SCALE

THIRD ANGLE PROJECTION

ALL DIMENSIONS IN mm

PART
SECTION A-A3.96
CONTACT
POINT

8.50 ± 0.15



NOTES:
1. RECOMMENDED PCB HOLE SIZE = $\varnothing 1.02 \pm 0.05$ mm.

PART No.	No. OF CONTACTS	DIM 'A'	DIM 'B'
M20-E0102XX	2	6.08	2.54
M20-E0103XX	3	8.62	5.08
M20-E0104XX	4	11.16	7.62
M20-E0105XX	5	13.70	10.16
M20-E0110XX	10	26.40	22.86

SPECIFICATIONS:**MATERIAL:**

MOULDING = 30% GLASS-FILLED PA6T, UL94V-0, BLACK
CONTACT = PHOSPHOR BRONZE

FINISH:

CONTACT = 100% TIN OVER NICKEL

ELECTRICAL:

CURRENT RATING = 3A

VOLTAGE RATING = 500V AC/DC

CONTACT RESISTANCE:

INITIAL = 20mΩ MAX

AFTER CONDITIONING = 30mΩ MAX

INSULATION RESISTANCE = 1,000MΩ MIN

DIELECTRIC STRENGTH = 1,000V AC / 1 MINUTE

MECHANICAL:

DURABILITY = 300 OPERATIONS

INSERTION FORCE = 3N MAX

WITHDRAWAL FORCE = 0.3N MIN

ENVIRONMENTAL:

TEMPERATURE RANGE = -40°C TO +105°C

PACKING:

BOX (2-WAY), TUBE

Asia only

ORDER CODE:

M20-E01XXXX

No. OF CONTACTS PER ROW
02, 03, 04, 05, 10

FINISH
46 = 100% TIN

WJB	I	08.02.08	----
NAME	ISS.	DATE	C/NOTE
APPROVED:		R. ADDE	
CHECKED:		M. G. PLESTED	
DRAWN:		W. J. BOURNE	
CUSTOMER REF.:			
ASSEMBLY DRG:			

HARWIN

HARWIN INC U.S.A. TEL: 603 893 5376 FAX: 603 893 5396 mis@harwin.com	HARWIN PLC Europe (U.K.) TEL: 023 9231 4545 FAX: 023 9231 4590 mis@harwin.co.uk	HARWIN PTE Asia (Singapore) TEL: +65 6779 4909 FAX: +65 6779 3868 mis@harwin.com.sg
--	---	---

THIS DRAWING AND ANY
INFORMATION OR DESCRIPTIVE
MATTER SET OUT HEREON ARE
CONFIDENTIAL AND COPYRIGHT
PROPERTY OF THE HARWIN
GROUP AND MUST NOT BE
DISCLOSED, LOANED, COPIED
OR USED FOR MANUFACTURING,
TENDERING OR FOR ANY
OTHER PURPOSE WITHOUT
THEIR WRITTEN PERMISSION.

TOLERANCES

X. = ±1mm
X.X = ±0.25mm
X.XX = ±0.10mm
X.XXX = ±0.01mm

ANGLES = ±5°

UNLESS STATED

MATERIAL:

SEE ABOVE

FINISH: SEE ABOVE

S/AREA: mm²**TITLE:**

2.54mm PITCH SIL VERTICAL
SOCKET ASSEMBLY

DRAWING NUMBER:

M20-E01XXXX

SHT
2
OF
2