

*** 2521 H Series ***

Material :

* Insulator : Nylon 6/6, UL 94V-0

* Contact : Brass

2521P ** H * 0 *
1 2 3

RoHS COMPLIANT

1.No. of circuits

2. Plating :

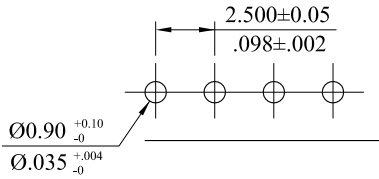
0=Tin plated 120μ" min over 30μ" min. nickel overall

U=Gold flash over 30μ"min. nickel overall

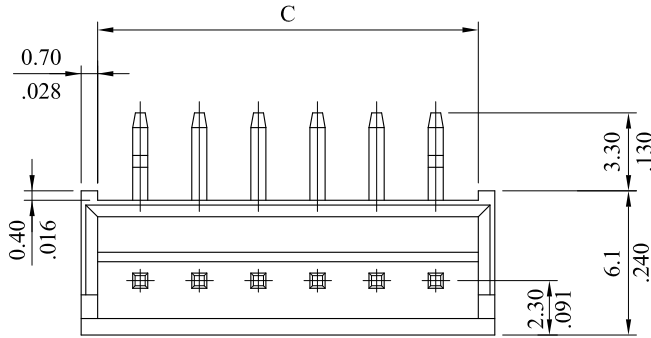
W= 15μ"min. gold over 30μ" min. nickel overall

3. Color

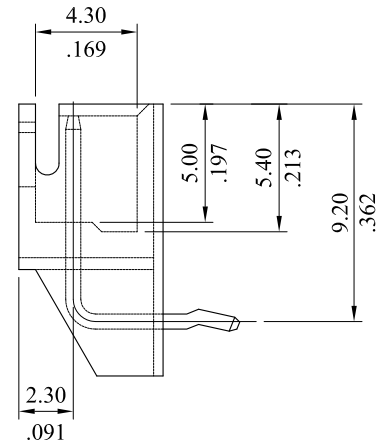
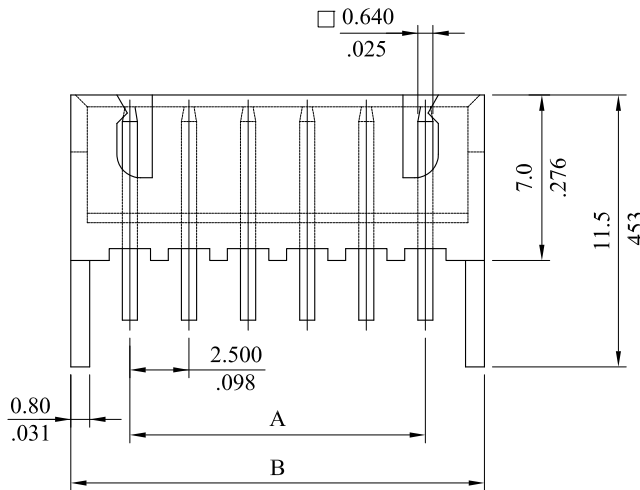
1=Black 3=Red 7=Blue 0=White



Recommended PCB Hole Pattern



circuits	the position of the kink		circuits	the position of the kink	
2P	1st	2nd	10P	1st	10th
3P	1st	3rd	11P	1st	11st
4P	1st	4th	12P	1st	12nd
5P	1st	5th	13P	1st	13rd
6P	1st	6th	14P	1st	14th
7P	1st	7th	15P	1st	15th
8P	1st	8th	16P	1st	16th
9P	1st	9th			



Part No.	DIM. A	DIM. B	DIM. C	Part No.	DIM. A	DIM. B	DIM. C
2521P02H*0*	2.500(.098)	7.50(.295)	6.100(.240)	2521P12H*0*	27.50(1.083)	32.5(1.280)	31.10(1.224)
2521P03H*0*	5.000(.197)	10.00(.394)	8.60(.339)	2521P13H*0*	30.00(1.181)	35.0(1.378)	33.60(1.323)
2521P04H*0*	7.500(.295)	12.50(.492)	11.10(.437)	2521P14H*0*	32.50(1.280)	37.5(1.476)	36.10(1.421)
2521P05H*0*	10.000(.394)	15.00(.591)	13.60(.535)	2521P15H*0*	35.00(1.378)	40.0(1.574)	38.60(1.520)
2521P06H*0*	12.500(.492)	17.50(.689)	16.10(.634)	2521P16H*0*	37.50(1.476)	42.5(1.672)	41.1(1.618)
2521P07H*0*	15.000(.591)	20.00(.787)	18.60(.732)	2521P17H*0*	40.00(1.574)	45.0(1.770)	43.6(1.716)
2521P08H*0*	17.500(.689)	22.5(.886)	21.10(.831)	2521P18H*0*	42.50(1.672)	47.5(1.868)	46.1(1.814)
2521P09H*0*	20.000(.787)	25.0(.984)	23.60(.929)	2521P19H*0*	45.00(1.770)	50.0(1.966)	48.6(1.913)
2521P10H*0*	22.50(.886)	27.5(1.083)	26.10(1.023)	2521P20H*0*	47.50(1.868)	52.5(2.064)	51.1(2.012)
2521P11H*0*	25.00(.984)	30.0(1.181)	28.60(1.126)				

E	ES110206			LECO CORPORATION	APPROVED:	PART NO.:				
D	ES060316				DATE:	2521P**H*0*				
C	ES041122			GENERAL TOLERANCES: (UNLESS SPECIFIED)	CHECKED:	TITLE:				
B	ES030317				DATE:	HEADER				
A	DWG REL				DRAWN:	DRAWING NO.:				
REV.	ECO. NO.	CHG.	APP.		DATE:	252108S				
						UNITS	SCALE	SIZE	SHEET	REV.
						mm inch	3:1	A4	1/1	E