

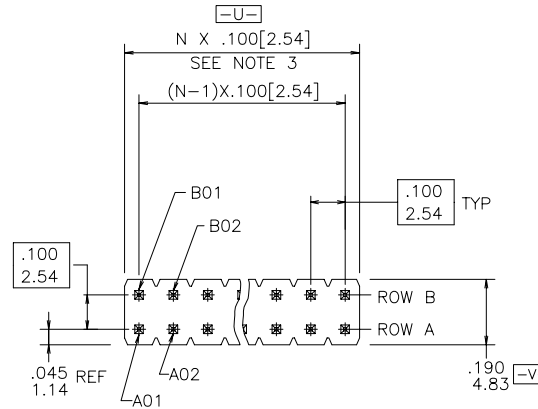
PRODUCT NUMBER

5 4 1 5 2 - X X X - X X - X X X X

PLATING  
 S= 15µ" [0.38µm] GOLD ON CONTACT AREA  
 100µ" [2.54µm] TIN ON TAIL  
 T= 100µ" [2.54µm] TIN ON CONTACT AREA AND ON TAIL  
 (SEE NOTE 10,13)

RETENTION R= RETENTIVE LEG NOTE 6  
 POLARIZATION NOTE 8  
 POSITIONS PER ROW 01 TO 36

PIN STYLE	POST	TAIL	OAL
52	0.230/5.84	0.115/2.92	0.400/10.16
06	0.230/5.84	0.155/3.94	0.440/11.18



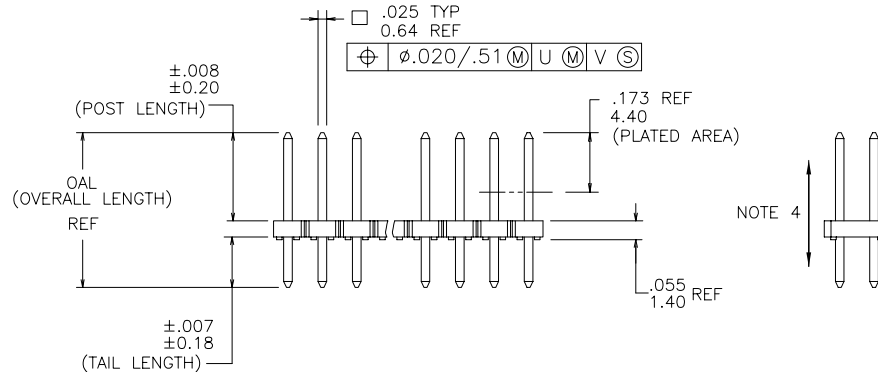
LEAD FREE PRODUCT NUMBER

5 4 1 5 2 - X X X X X X X X LF

PLATING  
 S= 15µ" [0.38µm] GOLD ON CONTACT AREA  
 100µ" [2.54µm] TIN ON TAIL  
 T= 100µ" [2.54µm] TIN ON CONTACT AREA AND ON TAIL  
 (SEE NOTE 10,13)

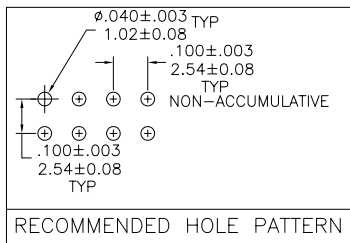
LEAD FREE NOTE 10 & 11  
 RETENTION R= RETENTIVE LEG NOTE 6  
 POLARIZATION NOTE 8  
 POSITIONS PER ROW 01 TO 36

PIN STYLE	POST	TAIL	OAL
52	0.230/5.84	0.115/2.92	0.400/10.16
06	0.230/5.84	0.155/3.94	0.440/11.18



FCIconnect.com

Copyright FCI



mat'l. code SEE NOTES 1 & 2		surface ISO 1302 ✓	tolerance ISO 406 ISO 1101	projection INCH/MM	product family BERGSTIK
ltr	ecn no	dr	date	tolerances unless otherwise specified	title
A	V92811	DAI	08/24/99	angles .XX±.01/0.3	UNSHROUDED HDR. D/R LOW PRO, THRU HOLE
B	V21475	GIP	09/17/02	linear .xxx±.005/0.13	
C	M05-0118	MHT	6/03/05	0'±2'	scale 1:1
D	M06-0268	MHT	7/17/06	dr	D.INGRAM 07/01/99
E	M06-0435	MHT	10/31/06	enr	H.SUNDY 07/21/99
				chr	H.SUNDY 07/21/99
				appd	H.SUNDY 07/21/99
sheet index	revision sheet	E 1	E 2		dwg no 54152
					sheet 1 of 2 size A3
					type Product Customer Drawing

1

2 3

4

5

6

NOTES:

- ① HOUSING MAT'L: HIGH TEMPERATURE THERMOPLASTIC. UL94V-0  
COLOR: BLACK
- ② PIN MATERIAL: PHOSPHOR-BRONZE
- ③ TO DETERMINE DIMENSIONS:  
N = NUMBER OF POSITIONS PER ROW.  
EXAMPLE: 10 POS., N x .100[2.54]=1.00[25.4]
- ④ 1LBS/0.5KG MIN. PIN RETENTION IN EITHER DIRECTION.
- 5. PACKAGED IN POLY BAGS.
- ⑥ RETENTIVE LEG:  
RETENTIVE LEG APPLICABLE TO TAIL LENGTH OF .120/3.05 ONLY.  
5LB/2.3KG MAX INSERTION FORCE AND .25LB./1KG MIN RETENTION FORCE  
PER RETENTIVE PIN USING .062/1.57 THICK CIRCUIT BOARD AND RECOMMENDED  
HOLE PATTERN. RETENTIVE LOCATION AT THE DISCRETION OF THE MANUFACTURER.  
RETENTION IS TWO PINS PER PART, ADJACENT TO ONE ANOTHER.  
IF FEATURE IS NOT APPLICABLE, REMOVE FROM PRODUCT NUMBER.
- 7. UNDERPLATING: 50μ"/1.27μm Ni.
- ⑧ FOR POLARIZATION SPECIFY POSITION NUMBER(i.e.. A03=ROW A POS. 3  
TO OMIT PIN). IF FEATURE IS NOT APPLICABLE, REMOVE FROM PROD. NO..
- 9. PIN TIPS ON TIN/LEAD PLATED PRODUCT MAY HAVE BARE METAL ON TWO SIDES,  
BOTH ENDS.
- ⑩ PART NUMBERS WITH "LF" AT THE END ARE LEAD FREE.
- ⑪ THIS PRODUCT MEETS EUROPEAN UNION DIRECTIVES AND OTHER  
COUNTRY REGULATION AS DESCRIBED IN GS-22-008.
- 12. THE HOUSING WILL WITHSTAND EXPOSURE TO 260°C PEAK TEMPERATURE  
FOR 20 SECONDS IN A CONVECTION, INFRA-RED OR VAPOR PHASE REFLOW  
OVEN. SEE APPLICATION NOTES/PROCEDURES IF THEY ARE AVAILABLE OR  
FOR 15 SECONDS IN A WAVE SOLDER APPLICATION WITH A 1.5mm  
MINIMUM THICK CIRCUIT BOARD.
- ⑬ "THIS PRODUCT HAS 100% PURE TIN PLATING IN THE INTERFACE AND  
HAS NOT BEEN TESTED FOR WHISKER GROWTH IN ALL INTERCONNECT  
ENVIRONMENTS."



FCIconnect.com

Copyright FCI

mat'l. code		surface ISO 1302 ✓		tolerance ISO 406 ISO 1101		projection 		product family BERGSTIK	
ltr	ecn no	dr	date	tolerances unless otherwise specified				title	
E				angles	linear	.XX±.01/0.3 .xxx±.005/0.13 .xxxx±.0020/0.051		UNSHROUDED HDR. D/R LOW PRO, THRU HOLE	
				0'±2'		scale 1:1		dwg no	
		dr	D.INGRAM	07/01/99				sheet 2 of 2 size	
		enr	H.SUNDY	07/21/99				54152 A3	
		chr	H.SUNDY	07/21/99				type Product Customer Drawing	
		appd	H.SUNDY	07/21/99					
sheet index	revision sheet								

form: A3

1

2

3

4

5

6