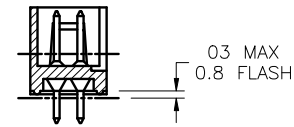
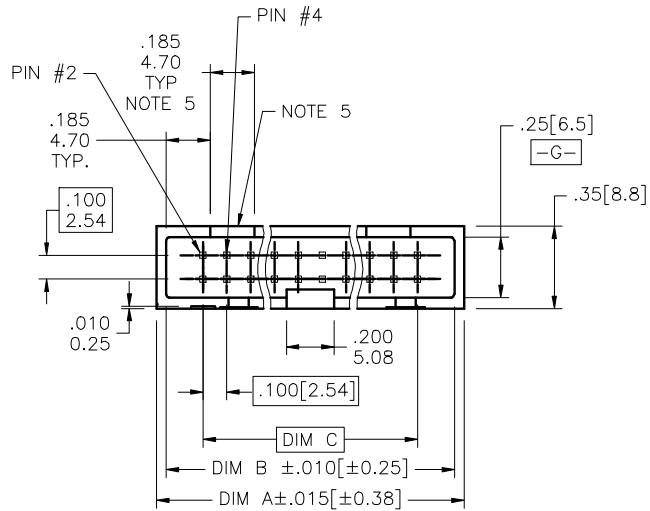
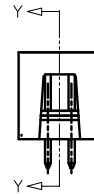
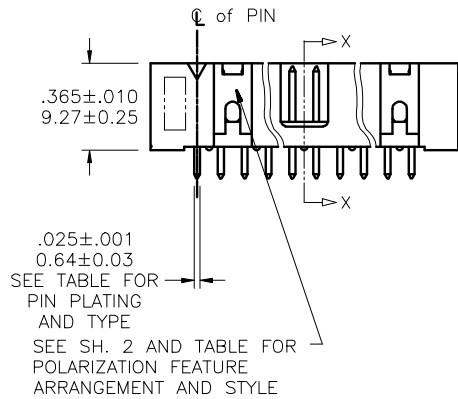


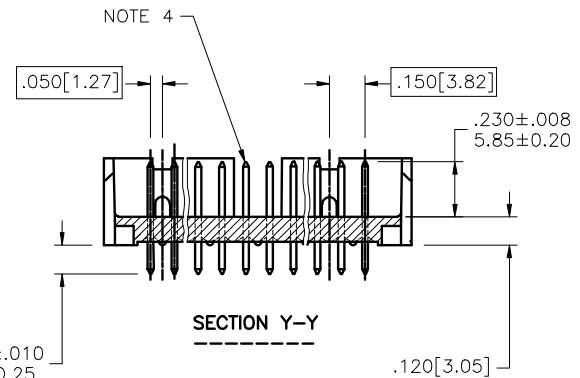
PRODUCT NO.
SEE TABLE



SECTION X-X



TAIL LENGTH ±.010
SEE TABLE ±0.25

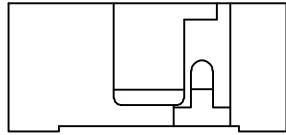


SECTION Y-Y

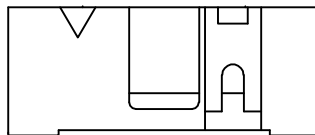
mat'l. code				surface ISO 406 ISO 1101	tolerance ISO 406 ISO 1101	projection INCH/MM	product family HEADERS
ltr	ecn no	dr	date	tolerances unless otherwise specified		scale 1:1	title HEADER, SLIMLINE VERT. ASSEMBLY 4-WALL
D	V70888	SAR	6/06/97	angles	.XX±.01/.XX±0.3		
E	V71117	EPK	9/24/97	linear	.XXX±.06/.XX±0.13		dwg no 72250
F	V80075	SAR	1/19/98	0'±2'	.XXX±.0020/.XXX±.051		
G	v21584	GIP	10/02/02	dr	M. FETROW 9/19/96		sheet 1 of 3 size A3
H	M05-0089	ERE	5/20/05	engr	L. FYE 9/19/96		type Product Customer Drawing
J	M06-0289	AGS	7/29/06	chr	L. FYE 9/19/96		
K	M08-291	MHT	10/08/08	appd	L. FYE 9/19/96		
sheet	revision	K	K	K			
index	sheet	1	2	3			

PRODUCT NUMBER

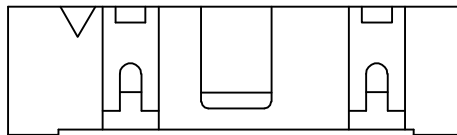
SEE TABLE



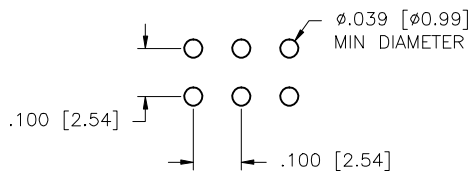
2 X 5
STYLE B - NO TRIANGLE
FOR POSITION #1



2 X 7
STYLE C



2 X 8 & LARGER
STYLE D



RECOMMENDED HOLE PATTERN

NOTES:

- ① PLASTIC MATERIAL: (SEE TABLES)
30% GLASS FILLED OR MINERAL FILLED LCP
FLAME RETARDANT PER UL-94-VO
2. PIN MATERIAL: PHOS BRONZE.
- ③ 4 LBS/1.8 KG MIN PIN RETENTION.
- ④ PIN CONTACT SURFACE IS TO BE FREE OF BURRS,
SCRATCHES AND PLASTIC DEBRIS.
- ⑤ FOR SIZES 2 X 5 & 2 X 7, ONLY ONE POLARIZATION SLOT
ON THE SAME END AS POSITION #1.
- ⑥ PACKAGING: (SEE TABLES)
"O" = TRAY PACKAGE. (THE STANDARD METHOD OF PACKAGING)
"G" = GPAX TAPE AND REEL
"T" = TUBE PACKAGING
- ⑦ PART NUMBERS WITH "R" FOLLOWING THE PART NUMBER
WILL HAVE RETENTIVE TAILS. (ONLY PARTS WITH TAIL
LENGTHS OF .105, .120 AND .150)
TWO PAIR OF PINS LOCATED APPROXIMATELY IN THE CENTER
OF 2X14 AND SMALLER SIZE ARE TO BE KINKED.
TWO PAIR OF PINS LOCATED ON EACH END OF 2X15 AND LARGER
ARE TO HAVE 2 PAIR OF PINS KINKED ON EACH END.
- ⑧ ADD AN "A" ON THE END OF THE PART NUMBER FOR
SPECIAL PRINTING (DATE CODE WEEK/YR)
- ⑨ ADD "LF" SUFFIX AT THE END OF PART NUMBER FOR LEAD FREE OPTION.
10. THE HOUSING WILL WITHSTAND EXPOSURE TO 260°C PEAK TEMPERATURE
FOR 15 SECONDS IN A WAVE SOLDER APPLICATION WITH A 1.5mm
MINIMUM THICK CIRCUIT BOARD. SEE APPLICATION NOTES/PROCEDURES
IF THEY ARE AVAILABLE.
11. IF "LF" P/N THE PRODUCT MEETS EUROPEAN UNION DIRECTIVES AND OTHER
COUNTRY REGULATION AS DESCRIBED IN GS-22-008.
- ⑫ PLATING OPTIONS:
MAY BE EITHER GOLD OR GXT PLATED AT MANUFACTURER'S OPTION.

mat'l. code		surface ISO 1302		tolerance ISO 406 ISO 1101		projection		product family	
litr		ecn no		dr		date		HEADERS	
K				tolerances unless otherwise specified		INCH/MM		title	
				angles linear		XX±.01/XX±0.3 .XXX±.005/XXX±.13 XXXX±.0020/XXX±.05		HEADER, SLIMLINE VERT. ASSEMBLY 4-WALL	
				0°±2'		scale 1:1		dwg no	
				dr		M. FETROW 9/19/96		sheet 2 of 3 size	
				engr		L. FYE 9/19/96		72250	
				chr		L. FYE 9/19/96		A3	
				appd		L. FYE 9/19/96		type Product Customer Drawing	
sheet index		revision sheet							

PRODUCT NO.

7225M - F ZZ T P X A LF

LEAD FREE OPTION
NOTE 9

PLATING NOTE 12	
A	30u"/0.76u Au DUPLEX
B	30u"/0.76u GXT DUPLEX
G	15u"/0.38u DUPLEX
1	30u"/0.76u Au GOLD
2	5u"/0.12u Au GOLD
5	30u"/0.76u GXT
6	15u"/0.38u GXT
9	15u"/0.38u Au GOLD

TAIL LENGTH	
1	.105/2.67
2	.120/3.05
5	.150/3.81
8	.180/4.57

PACKAGING NOTE 6	
0	TRAY PACKAGING
G	GPAX TAPE & REEL
T	TUBE PACKAGING

RETENTION FEATURE NOTE 7	
R	RETENTIVE TAILS

DATE CODE NOTE 8	
	WEEK/YR

	POSITIONS	DIM A	DIM B	DIM C	HDR. STYLE
10	2 x 5	.79/12.1	.710/18.03	.400/10.16	B
14	2 x 7	.99/25.2	.910/23.11	.600/15.24	C
16	2 x 8	1.09/27.7	1.010/25.65	.700/17.78	D
20	2 x 10	1.29/32.8	1.210/30.73	.900/22.86	D
24	2 x 12	1.49/37.9	1.410/35.81	1.100/27.94	D
26	2 x 13	1.59/40.4	1.510/38.35	1.200/30.48	D
30	2 x 15	1.79/45.5	1.710/43.43	1.400/35.56	D
34	2 x 17	1.99/50.6	1.910/48.51	1.600/40.64	D
36	2 x 18	2.09/53.1	2.010/51.05	1.700/43.18	D
40	2 x 20	2.29/58.2	2.210/56.13	1.900/48.26	D
44	2 x 22	2.49/63.3	2.410/61.21	2.100/53.34	D
50	2 x 25	2.79/70.9	2.710/68.83	2.400/60.96	D
60	2 x 30	3.29/83.6	3.210/81.53	2.900/73.66	D

PLASTIC MAT'L NOTE 1		
0	BLACK PCT	SOLID REAR WALL
1	BLACK PCT	REAR POLARIZATION
2	BLUE PBT	SOLID REAR WALL
3	BLUE PBT	REAR POLARIZATION
4	GRAY PBT	SOLID REAR WALL
5	GRAY PBT	REAR POLARIZATION

mat'l. code	surface ISO 1302	tolerance ISO 406 ISO 1101	projection	product family HEADERS
ltr	ecn no	dr	date	title
k				HEADER, SLIMLINE VERT. ASSEMBLY 4-WALL
	angles	linear	linear	INCH/MM
	0'±2'	XXX±.01/XX±.03	XXX±.005/XX±.13	scale 1:1
		XXX±.0020/XXX±.05		
dr	M. FETROW	9/19/96		dwg no
engr	L. FYE	9/19/96		sheet 3 of 3
chr	L. FYE	9/19/96		size
appd	L. FYE	9/19/96		A3
sheet	revision			type
index	sheet			Product Customer Drawing

FCJ
 FCconnect.com
 Copyright FCJ