

## FEATURES AND SPECIFICATIONS

### Features and Benefits

- Size 6 circuits
- Break-away polarizing keys
- Rectangular pins 0.79 by 1.57mm (.031 by .062")
- High temperature version also available

### Reference Information

Product Specification: PS-90331  
 Packaging: Tray  
 UL File No.: E29179  
 CSA File No.: LR19980  
 Mates With: [90331](#)  
 Designed In: Inches

### Electrical

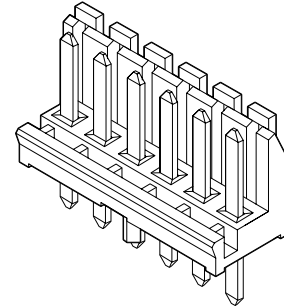
Voltage: 250V  
 Current: 4.0A  
 Insulation Resistance: 500 MΩ min.  
 Dielectric Withstanding Voltage: 1500V AC

### Physical

Housing: Black glass-filled polyester, UL 94V-0  
 High Temperature—Black PCT, UL 94V-0  
 Contact: Copper Alloy  
 Plating: Tin  
 Operating Temperature: -40 to +105°C

# molex® 3.96mm (.156") Pitch Industry Standard Power Supply Header

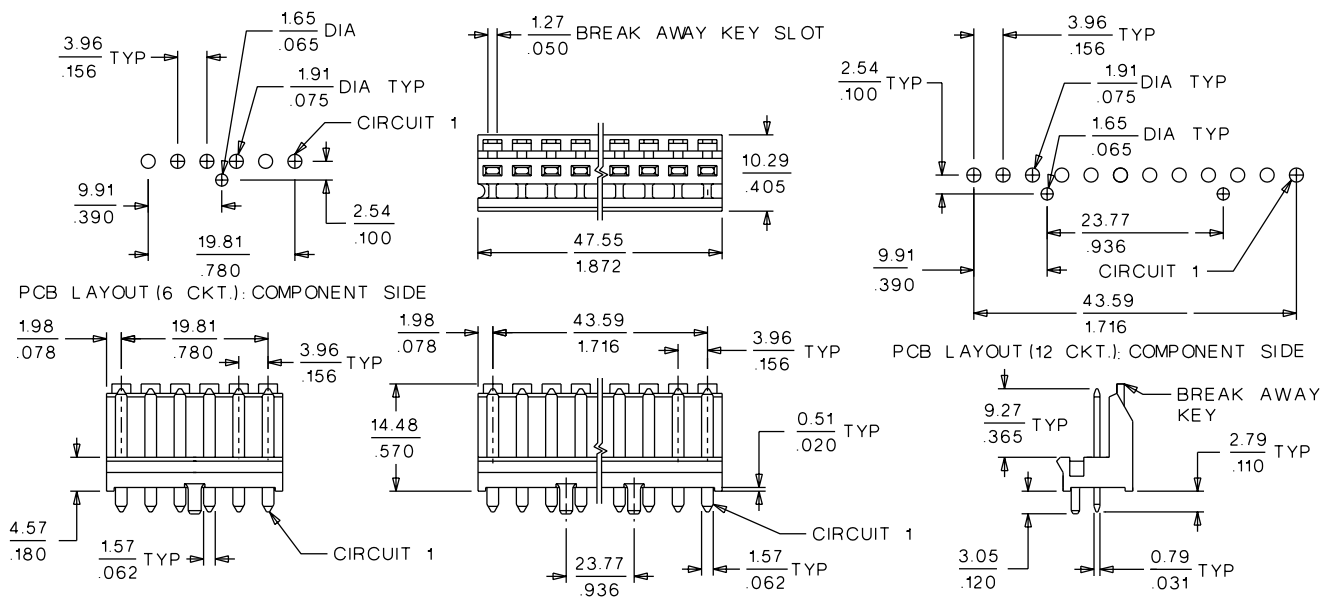
## 8619



Power Connectors

F

## CATALOG DRAWING (FOR REFERENCE ONLY)



## ORDERING INFORMATION

Standard			
Circuits	Order No.	Keys Removed	Mates with Housing
6	15-48-0106	None	
	15-48-0407	Circuit 1	90331-0002
	15-48-0406	Circuit 2	90331-0007
	15-48-0409	Circuit 3	90331-0008
	15-48-0408	Circuit 4	90331-0003
	15-48-0411	Circuit 5	90331-0009
	15-48-0412	Circuit 6	90331-0010

Surface Mount Compatible		
Circuits	Order No.	Keys Removed
6	15-48-0420	None
	15-48-0421	Circuit 1
	15-48-0422	Circuit 2
	15-48-0423	Circuit 3
	15-48-0424	Circuit 4
	15-48-0425	Circuit 5
	15-48-0426	Circuit 6