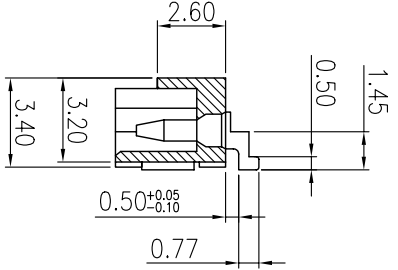
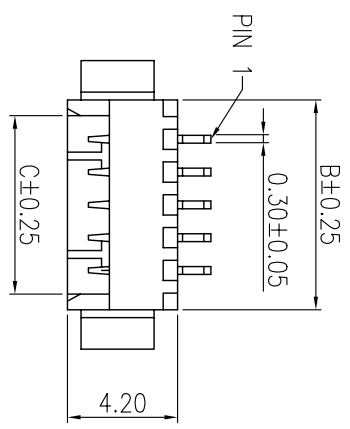
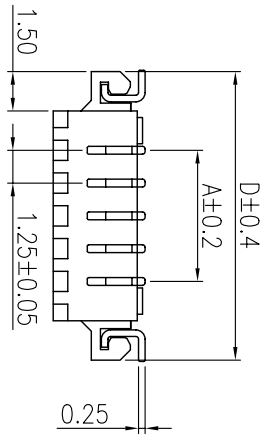


		REVISIONS			
SYM	DISCRIPTION	DATE	APPROVED	SYM	DISCRIPTION
Δ	NOTE ROHS STANDARD	11/NOV/05	AARON	Δ	
Δ				Δ	

**\*\*CUSTOMER DRAWING FOR REFERENCE ONLY, SAMPLES APPROVAL ARE REQUIRED!!**

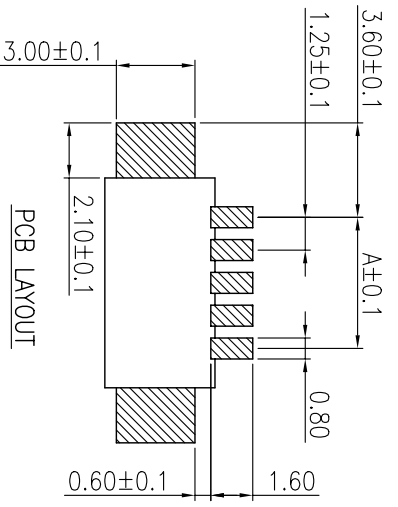
**SPECIFICATIONS:**  
 VOLTAGE RATING: 250V AC, DC  
 CURRENT RATING: 1A, AC, DC  
 WITHSTANDING VOLTAGE: 250V AC/minute  
 INSULATION RESISTANCE: 100MOHM min  
 TEMPERATURE RANGE: -40°C ~ +85°C  
 CONTACT RESISTANCE: INITIAL VALUE/10mOHM max  
 AFTER ENVIRONMENTAL TESTING/20mOHM MAX  
 MATERIAL: NYLON 46 UL94V-0  
 CONTACT: BRASS, TIN PLATED  
 Q' ty: 1500 PCS/REEL

**ORDER INFORMATION:**  
 MCu002-RtXXT  
 MC: WAFER SERIES, WAFER  
 u: PITCH: 1.25 mm  
 002: SERIES NO.  
 Rt: PCB TYPE, RIGHT  
 ANGLE SURFACE MOUNT TYPE  
 XX: NO. OF CONTACTS  
 T: PLATING, TIN PLATING



PART NO.	CIRCUITS	DIMENSION			
		A	B	C	D
MCu002-Rt02T	2	1.25	4.25	3.05	7.25
MCu002-Rt03T	3	2.50	5.50	4.30	8.50
MCu002-Rt04T	4	3.75	6.75	5.55	9.75
MCu002-Rt05T	5	5.00	8.00	6.80	11.00
MCu002-Rt06T	6	6.25	9.25	8.05	12.25
MCu002-Rt07T	7	7.50	10.50	9.30	13.50
MCu002-Rt08T	8	8.75	11.75	10.55	14.75
MCu002-Rt09T	9	10.00	13.00	11.80	16.00
MCu002-Rt10T	10	11.25	14.25	13.05	17.25
MCu002-Rt11T	11	12.50	15.50	14.30	18.50
MCu002-Rt12T	12	13.75	16.75	15.55	19.75
MCu002-Rt13T	13	15.00	18.00	16.80	21.00
MCu002-Rt14T	14	16.25	19.25	18.05	22.25
MCu002-Rt15T	15	17.50	20.50	19.30	23.50

**PACKAGE:**  
 MCu02-RtXXT : TUBE  
 MCu002-RtXXT-TR : TAPE & REEL



MATING		HOUSING		TERMINAL		MODEL	
TOLERANCES UNLESS OTHERWISE SPECIFIED ±0.25		MCu002-XX-H		MCu002-T		MCu002-T	
SIGNATURES		DATE		TITLE		MODEL	
DRAWN TONY		26/AUG/03*		WAFER			
CHECKED ZOLA		26/AUG/03*		NO.		MCu002-Rt__T	
APPROVALS							

**MMT CORPORATION**

