

TC551001APL/AFL/AFTL/ATRL-70L/85L/10L(LT)

SILICON GATE CMOS

131,072 WORD x 8 BIT STATIC RAM

Description

The TC551001APL is a 1,048,576 bit CMOS static random access memory organized as 131,072 words by 8 bits and operated from a single 5V power supply. Advanced circuit techniques provide both high speed and low power features with an operating current of 5mA/MHz (typ.) and a minimum cycle time of 70ns. When $\overline{CE1}$ is a logical high, or $\overline{CE2}$ is low, the device is placed in a low power standby mode in which the standby current is 2 μ A typically. The TC551001APL has three control inputs. Chip enable inputs ($\overline{CE1}$, $\overline{CE2}$) allow for device selection and data retention control, while an output enable input (\overline{OE}) provides fast memory access. The TC551001APL is suitable for use in microprocessor systems where high speed, low power, and battery backup are required. The TC551001APL-L(LT) has an operating temperature range of -20 ~ 70°C so it is suitable for use in low temperature applications.

The TC551001APL is offered in a standard dual-in-line 32-pin plastic package, a small outline plastic package, and a thin small outline plastic package (forward type, reverse type).

Features

- Low power dissipation: 27.5mW/MHz (typ.)
- Standby current: 4 μ A (max.) at $T_a = 25^\circ\text{C}$
- Single 5V power supply
- Access time (max.)

	TC551001APL/AFL/AFTL/ATRL		
	-70L(LT)	-85L(LT)	-10L(LT)
Access Time	70ns	85ns	100ns
$\overline{CE1}$ Access Time	70ns	85ns	100ns
$\overline{CE2}$ Access Time	70ns	85ns	100ns
\overline{OE} Access Time	35ns	45ns	50ns

- Power down feature: $\overline{CE1}$, $\overline{CE2}$
- Data retention supply voltage: 2.0 ~ 5.5V
- Wide operating temperature: -20 ~ 70°C
- Inputs and outputs TTL compatible
- Package
 - TC551001APL : DIP32-P-600
 - TC551001AFL : SOP32-P-525
 - TC551001AFTL : TSOP32-P-0820
 - TC551001ATRL : TSOP32-P-0820A

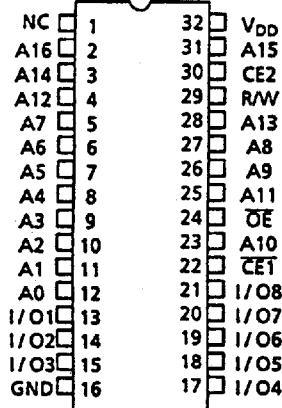
Pin Names

A0 ~ A16	Address Inputs
R/W	Read/Write Control Input
\overline{OE}	Output Enable Input
$\overline{CE1}$, $\overline{CE2}$	Chip Enable Inputs
I/O1 ~ I/O8	Data Input/Output
V_{DD}	Power (+5V)
GND	Ground
NC	No Connection

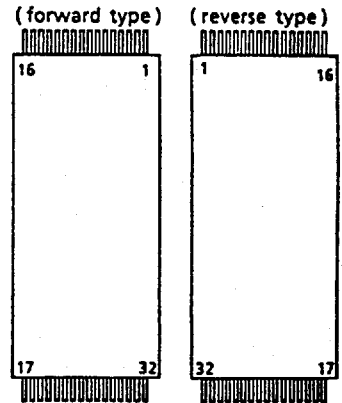
PIN NO.	1	2	3	4	5	6	7	8	9	10	11	12	13	14	15	16
PIN NAME	A ₁₁	A ₉	A ₈	A ₁₃	R/W	CE2	A ₁₅	V _{DD}	NC	A ₁₆	A ₁₄	A ₁₂	A ₇	A ₆	A ₅	A ₄
PIN NO.	17	18	19	20	21	22	23	24	25	26	27	28	29	30	31	32
PIN NAME	A ₃	A ₂	A ₁	A ₀	I/O1	I/O2	I/O3	GND	I/O4	I/O5	I/O6	I/O7	I/O8	$\overline{CE1}$	A ₁₀	\overline{OE}

Pin Connection (Top View)

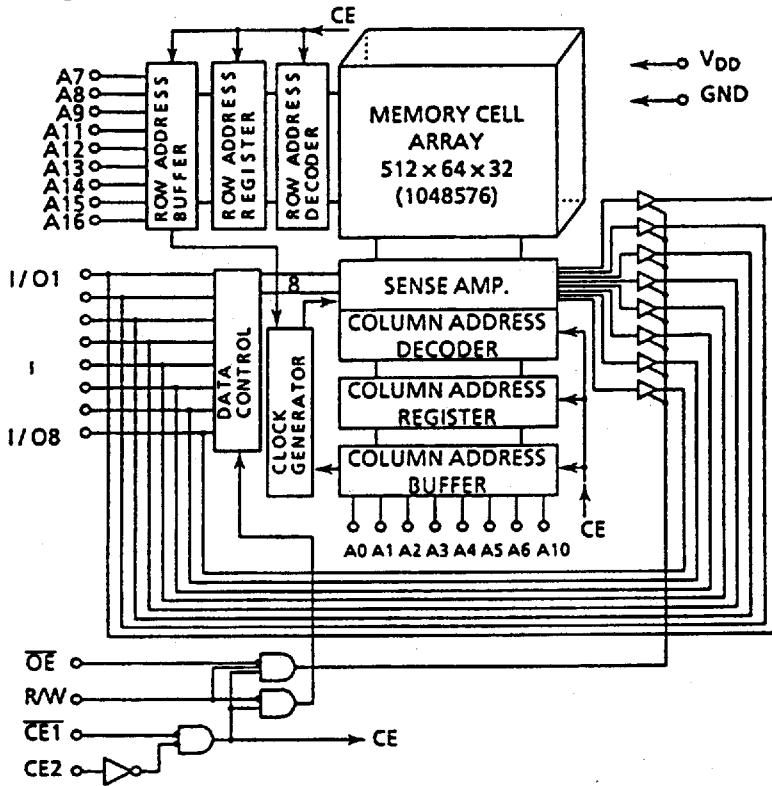
o 32 PIN DIP & SOP



o 32 PIN TSOP



Block Diagram



Operating Mode

MODE \ PIN	CE1	CE2	OE	R/W	I/O1 ~ I/O8	POWER
Read	L	H	L	H	D _{OUT}	I _{DDO}
Write	L	H	*	L	D _{IN}	I _{DDO}
Output Deselect	L	H	H	H	High-Z	I _{DDO}
Standby	H	*	*	*	High-Z	I _{DDS}
	*	L	*	*	High-Z	I _{DDS}

* H or L

Maximum Ratings

SYMBOL	ITEM	RATING	UNIT
V _{DD}	Power Supply Voltage	-0.3 ~ 7.0	V
V _{IN}	Input Voltage	-0.3* ~ 7.0	V
V _{I/O}	Input and Output Voltage	-0.5 ~ V _{DD} + 0.5	V
P _D	Power Dissipation	1.0/0.6**	W
T _{SOLDER}	Soldering Temperature • Time	260 • 10	°C • sec
T _{STRG}	Storage Temperature	-55 ~ 150	°C
T _{OPR}	Operating Temperature	-20 ~ 70	°C

* -3.0V with a pulse width of 50ns

** SOP

DC Recommended Operating Conditions

SYMBOL	PARAMETER	MIN.	TYP.	MAX.	UNIT
V _{DD}	Power Supply Voltage	4.5	5.0	5.5	V
V _{IH}	Input High Voltage	2.4	-	V _{DD} + 0.3	
V _{IL}	Input Low Voltage	-0.3	-	0.6	
V _{DH}	Data Retention Supply Voltage	2.0	-	5.5	

DC Characteristics (Ta = -20 ~ 70°C, V_{DD} = 5V±10%)

SYMBOL	PARAMETER	TEST CONDITION	MIN.	TYP.	MAX.	UNIT	
I _{LI}	Input Leakage Current	V _{IN} = 0 ~ V _{DD}	-	-	±1.0	μA	
I _{LO}	Output Leakage Current	CE1 = V _{IH} or CE2 = V _{IL} or R/W = V _{IL} or OE = V _{IH} , V _{OUT} = 0 ~ V _{DD}	-	-	±1.0	μA	
I _{OH}	Output High Current	V _{OH} = 2.4V	-1.0	-	-	mA	
I _{OL}	Output Low Current	V _{OL} = 0.4V	4.0	-	-	mA	
I _{DDO1}	Operating Current	CE1 = V _{IL} and CE2 = V _{IH} and R/W = V _{IH} , I _{OUT} = 0mA, Other Inputs = V _{IH} /V _{IL}	t _{cycle}	Min.	-	-	70
				1μs	-	-	20
I _{DDO2}		CE1 = 0.2V and CE2 = V _{DD} - 0.2V, R/W = V _{DD} - 0.2V, I _{OUT} = 0mA, Other Inputs = V _{DD} - 0.2V/0.2V	t _{cycle}	Min.	-	-	60
				1μs	-	-	10
I _{DOS1}	Standby Current	CE1 = V _{IH} or CE2 = V _{IL}		-	-	-	3
I _{DOS2} ⁽¹⁾			CE1 = V _{DD} - 0.2V or CE2 = 0.2V, V _{DD} = 2.0V ~ 5.5V				
			Ta = -20 ~ 70°C	-	-	-	30
			Ta = 25°C	-	2	-	4

Note (1): If CE1 ≥ V_{DD} - 0.2V, the specified limits are guaranteed under the condition CE2 ≥ V_{DD} - 0.2V or CE2 ≤ 0.2V.

Capacitance* (Ta = 25°C, f = 1MHz)

SYMBOL	PARAMETER	TEST CONDITION	MAX.	UNIT
C _{IN}	Input Capacitance	V _{IN} = GND	10	pF
C _{OUT}	Output Capacitance	V _{OUT} = GND	10	

*This parameter is periodically sampled and is not 100% tested.

AC Characteristics (Ta = -20 ~ 70°C, V_{DD} = 5V±10%)

Read Cycle

SYMBOL	PARAMETER	TC551001APL/AFL/AFTL/ATRL						UNIT
		-70L(LT)		-85L(LT)		-10L(LT)		
		MIN.	MAX.	MIN.	MAX.	MIN.	MAX.	
t _{RC}	Read Cycle Time	70	-	85	-	100	-	ns
t _{ACC}	Address Access Time	-	70	-	85	-	100	
t _{CO1}	CE1 Access Time	-	70	-	85	-	100	
t _{CO2}	CE2 Access Time	-	70	-	85	-	100	
t _{OE}	Output Enable to Output in Valid	-	35	-	45	-	50	
t _{COE}	Chip Enable (CE1, CE2) to Output in Low-Z	5	-	5	-	5	-	
t _{OEE}	Output Enable to Output in Low-Z	0	-	0	-	0	-	
t _{OD}	Chip Enable (CE1, CE2) to Output in High-Z	-	25	-	30	-	35	
t _{ODO}	Output Enable to Output in High-Z	-	25	-	30	-	35	
t _{OH}	Output Data Hold Time	10	-	10	-	10	-	

Write Cycle

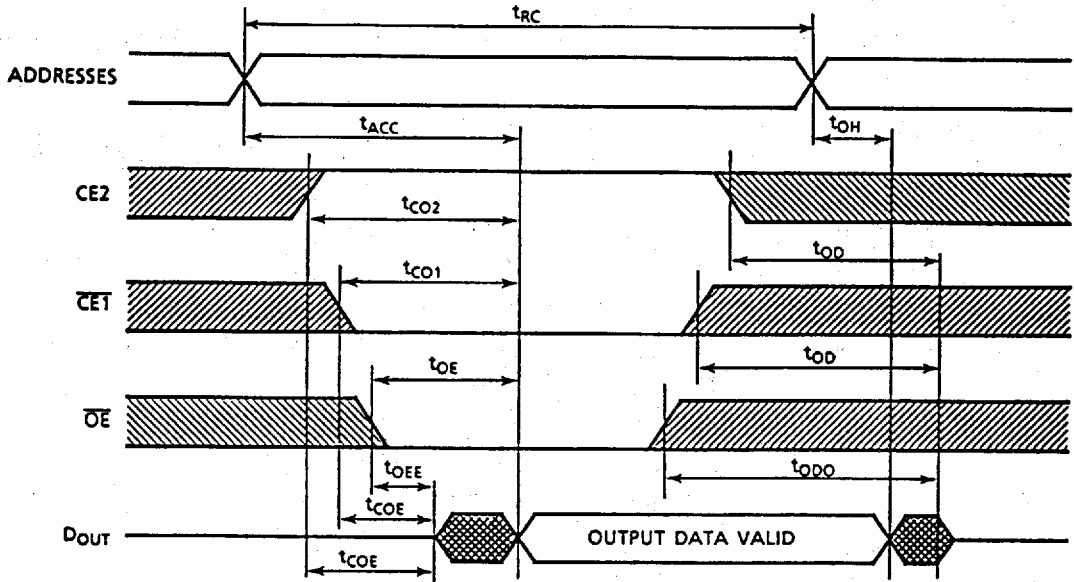
SYMBOL	PARAMETER	TC551001APL/AFL/AFTL/ATRL						UNIT
		-70L(LT)		-85L(LT)		-10L(LT)		
		MIN.	MAX.	MIN.	MAX.	MIN.	MAX.	
t _{WC}	Write Cycle Time	70	-	85	-	100	-	ns
t _{WP}	Write Pulse Width	50	-	60	-	60	-	
t _{CW}	Chip Selection to End of Write	60	-	75	-	80	-	
t _{AS}	Address Setup Time	0	-	0	-	0	-	
t _{WR}	Write Recovery Time	0	-	0	-	0	-	
t _{ODW}	R/W to Output in High-Z	-	25	-	30	-	35	
t _{OEW}	R/W to Output in Low-Z	0	-	0	-	0	-	
t _{DS}	Data Setup Time	30	-	35	-	40	-	
t _{DH}	Data Hold Time	0	-	0	-	0	-	

AC Test Conditions

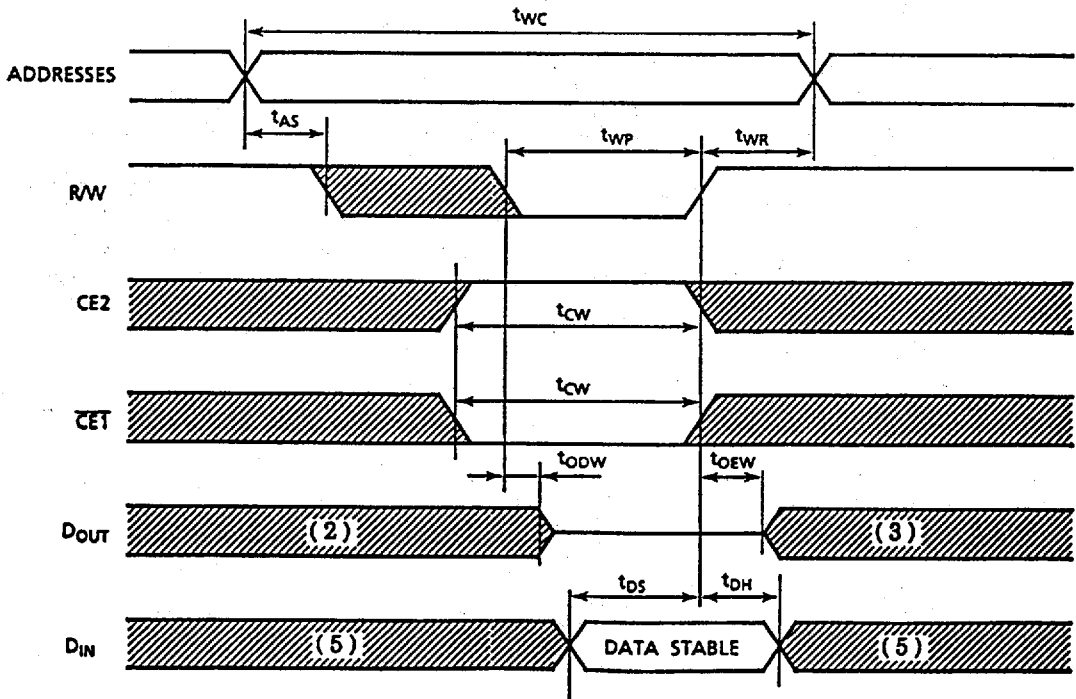
Input Pulse Levels	2.6V/0.4V
Input Pulse Rise and Fall Time	5ns
Input Timing Measurement Reference Levels	1.5V
Output Timing Measurement Reference Levels	1.5V
Output Load	1 TTL Gate and C _L = 100pF

Timing Waveforms

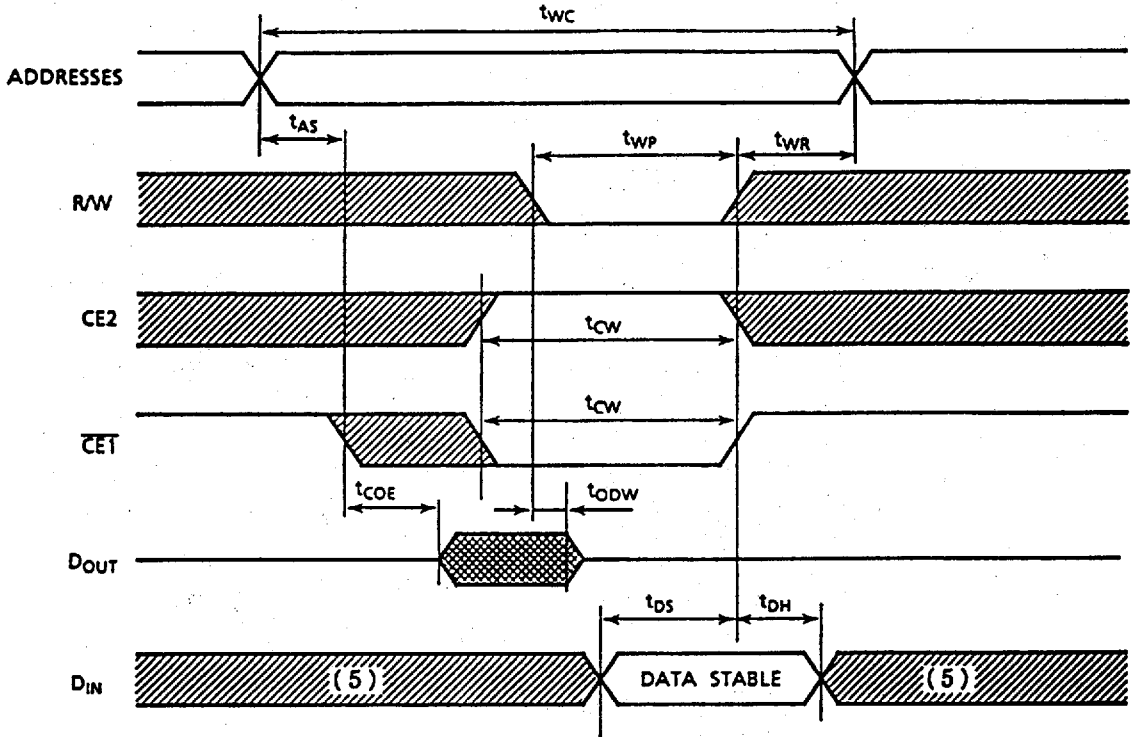
Read Cycle ⁽¹⁾



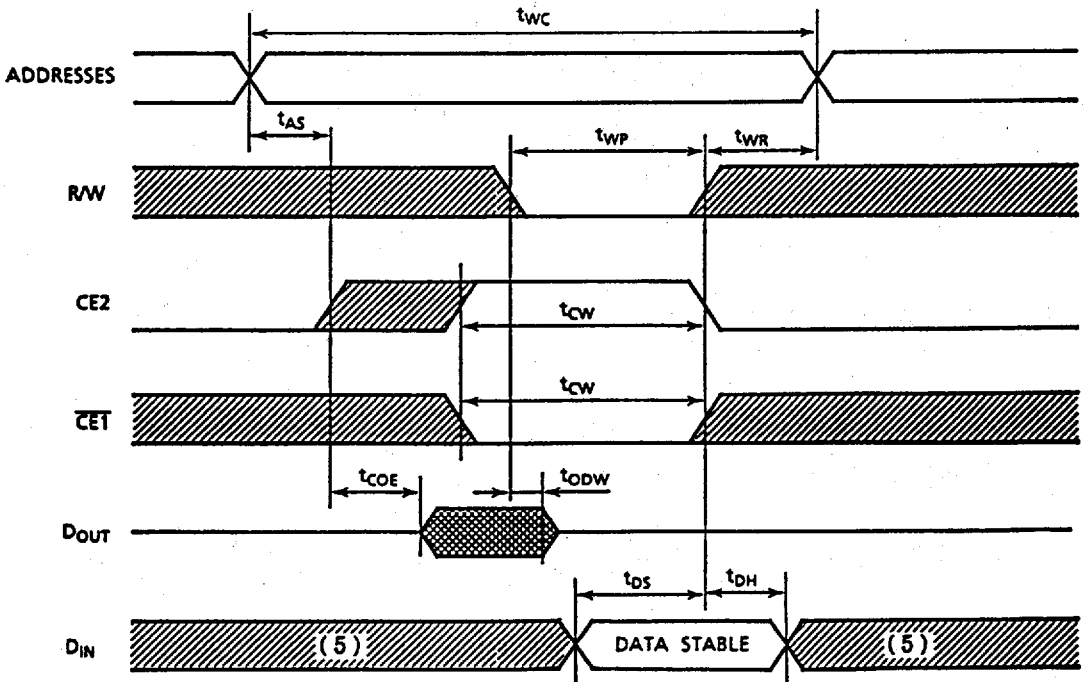
Write Cycle 1 ⁽⁴⁾ (R/W Controlled Write)



Write Cycle 2 ⁽⁴⁾ ($\overline{\text{CE1}}$ Controlled Write)



Write Cycle 3 ⁽⁴⁾ (CE2 Controlled Write)



Notes:

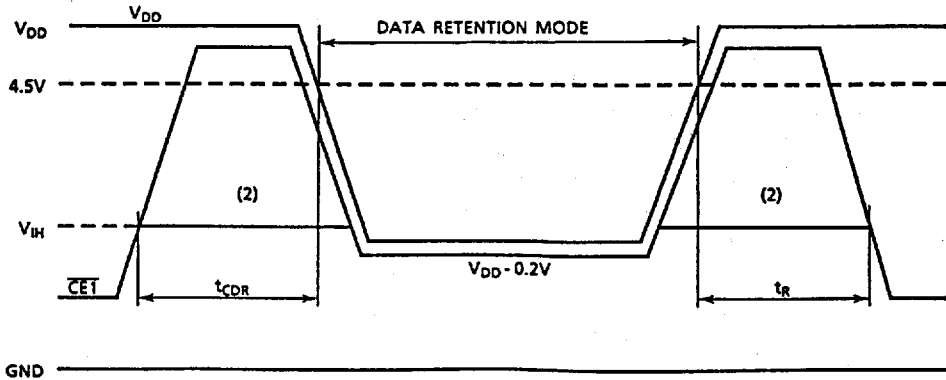
1. R/W is high for read cycles.
2. If the $\overline{CE1}$ low transition or CE2 high transition occurs coincident with or after the R/W low transition, outputs remain in a high impedance state.
3. If the $\overline{CE1}$ high transition or CE2 low transition occurs coincident with or prior to the R/W high transition, outputs remain in a high impedance state.
4. If \overline{OE} is high during a write cycle, the outputs are in a high impedance state during this period.
5. The I/O may be in the output state during this time; therefore input signals of opposite phase must not be applied.

Data Retention Characteristics (Ta = -20 ~ 70°C)

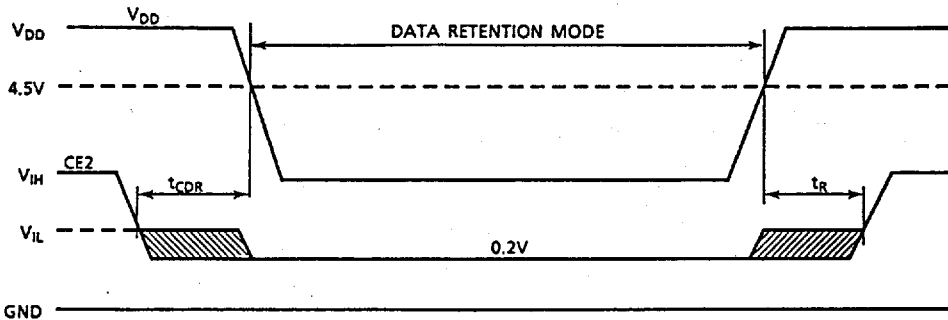
SYMBOL	PARAMETER	MIN.	TYP.	MAX.	UNIT
V _{DH}	Data Retention Supply Voltage	2.0	—	5.5	V
I _{DDS2}	Standby Current	V _{DH} = 3.0V —	—	15*	μA
		V _{DH} = 5.5V —	—	30	
t _{CDR}	Chip Deselect to Data Retention Mode	0	—	—	ns
t _R	Recovery Time	5	—	—	ms

* 3μA (max.) Ta = -20 ~ 40°C

CE1 Controlled Data Retention Mode (1)



CE2 Controlled Data Retention Mode (3)



Notes:

1. In the $\overline{CE1}$ controlled data retention mode, minimum standby current is achieved under the condition $CE2 \leq 0.2V$ or $CE2 \geq V_{DD} - 0.2V$.
2. If the V_{IH} of $\overline{CE1}$ is 2.4V in operation, during the period that the V_{DD} voltage is going down from 4.5V to 2.6V, I_{DDS1} current flows.
3. In the CE2 controlled data retention mode, minimum standby current is achieved under the condition $CE2 \leq 0.2V$.