

PRODUCT NUMBER
5 3 6 3 0 - X X X - X X X

PLATING
G=30µ" [0.76µm] GOLD
ON CONTACT AREA
150µ" [3.81µm] TIN/LEAD
ON TAIL

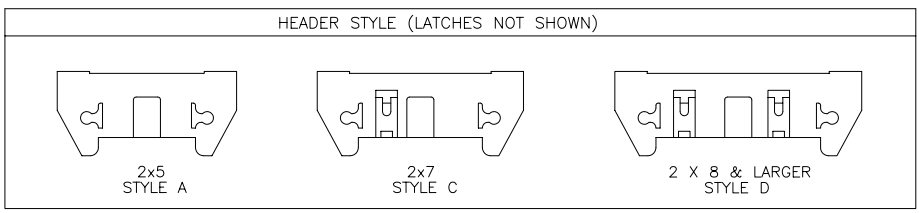
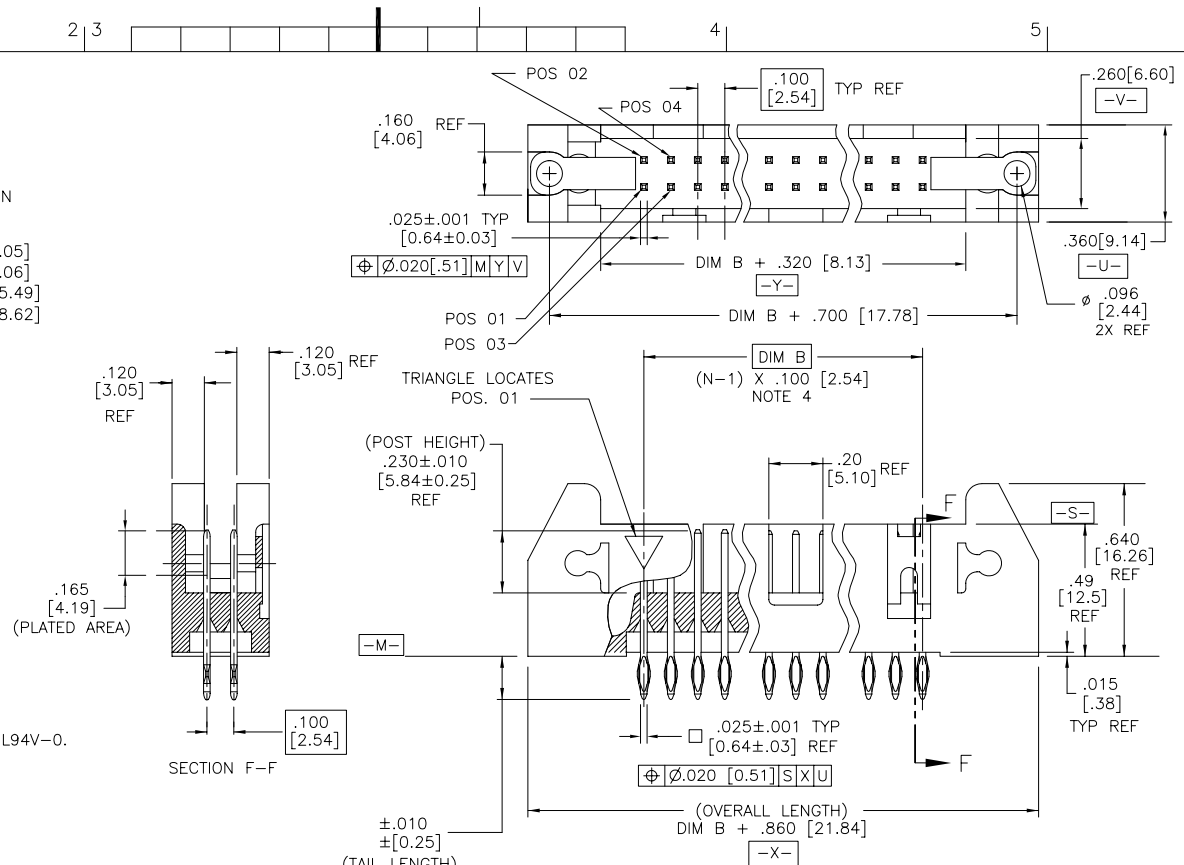
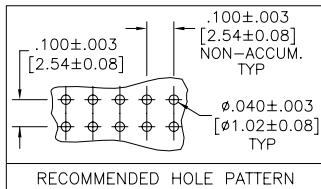
POLARIZATION
NOTE 8

TAIL LENGTH
2 = .120 [3.05]
3 = .160 [4.06]
6 = .610 [15.49]
8 = .733 [18.62]

DASH NO.	POSITIONS	HEADER STYLE
10	2 X 5	A
14	2 X 7	C
16	2 X 8	D
20	2 X 10	D
26	2 X 13	D
34	2 X 17	D
40	2 X 20	D
50	2 X 25	D

NOTES:

- HOUSING MAT'L: HIGH TEMPERATURE THERMOPLASTIC. UL94V-0. COLOR : BLACK
- PIN MATERIAL: PHOSPHOR-BRONZE
- 3 LBS/1.36 KG MIN. RETENTION.
- TO DETERMINE DIMENSIONS:
N = NUMBER OF POSITIONS.
EXAMPLE: 10 POS., (N-1) x .100[2.54]=.900[22.87]
- PACKAGED PER BUS-14-312 IN TRAYS.
- UNDERPLATING: 50µ"/1.27µm Ni.
- FOR POLARIZATION, SPECIFY POSITION NUMBER (i.e.. 03= PIN 3) TO OMIT PIN. OMIT FROM PRODUCT NUMBER IF THIS FEATURE IS NOT APPLICABLE.
- RECOMMENDED PLATED-THRU-HOLE DIMENSIONS ARE:
DRILLED HOLE: .0453/1.604±.0010/.025 DIA
COPPER PLATING THICKNESS .001/.025 TO .003/.076
SOLDER PLATING THICKNESS: .0003/.076 TO .0007/.0178
OVERALL HOLE SIZE: .040/1.016±.003/.076 DIA
- RECOMMENDED MOUNTING SCREW - #2-56 FILLISTER HEAD MACHINE SCREW .25/6.35 LONG FOR .063/1.58 & .094/2.38 BOARDS, .313/7.93 LONG FOR .125/3.18 BOARDS.



mat'l. code		surface ISO 1302 ✓	tolerance ISO 406 ISO 1101	projection INCH/MM	product family QUICKIE
ltr	ecn no dr	date		title	
A	V02362	AZ	9/27/00	.100/2.54cc EJECT LATCH	
B	M06-0289	AGS	7/29/06	SHOROUDED VERTICAL P.F HEADER	
angles		linear		scale 1:1	
0°±2'		.XX±.01/.3 .XXX±.005/.13 .XXXX±.0020/.051		dwg no sheet 1 of 1 size	
dr		A. ZEREBILOV 9/27/00		53630 A3	
enrg		M. MOSTOLLER 9/27/00		type Product Customer Drawing	
chr		M. MOSTOLLER 9/27/00			
app		M. MOSTOLLER 9/27/00			
sheet index	revision sheet	B	1		

FCI
FCIconnect.com
Copyright FCI