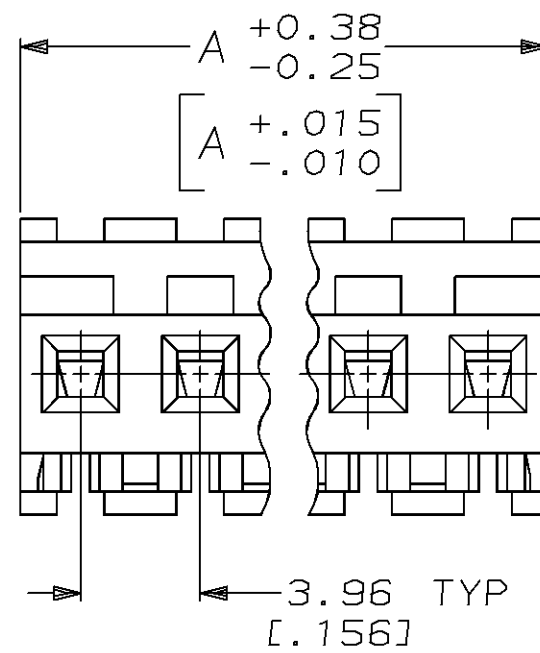
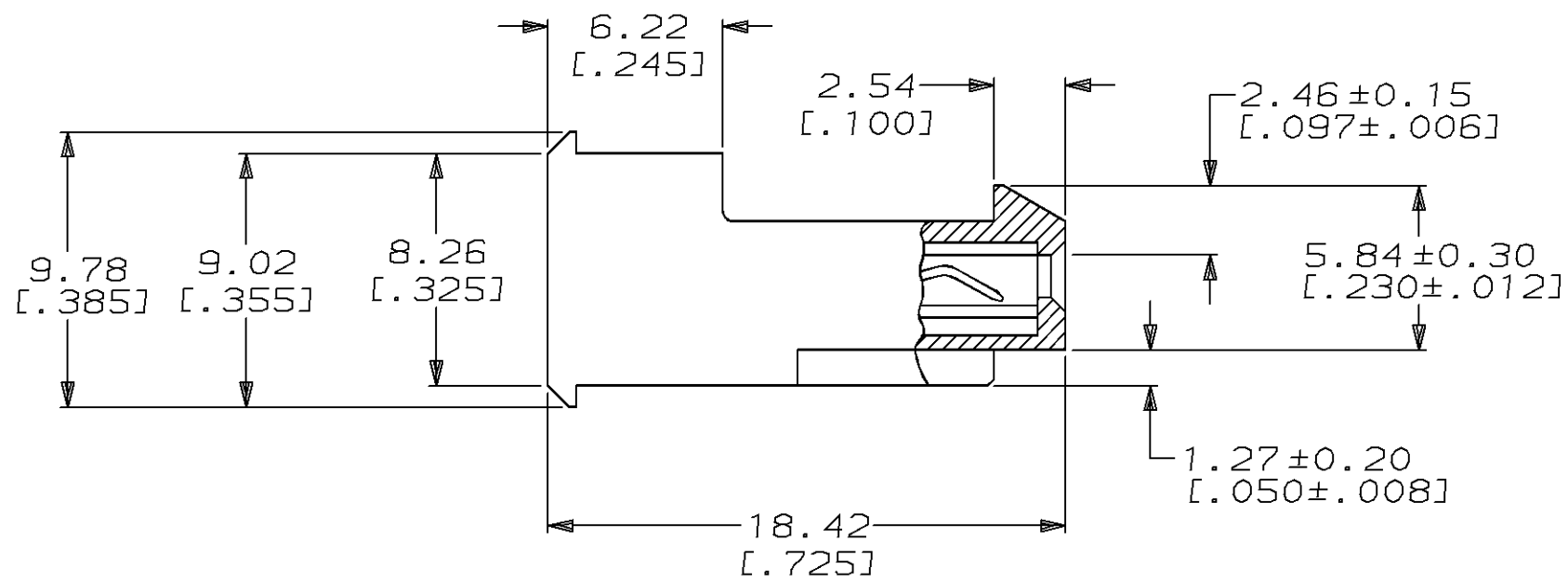
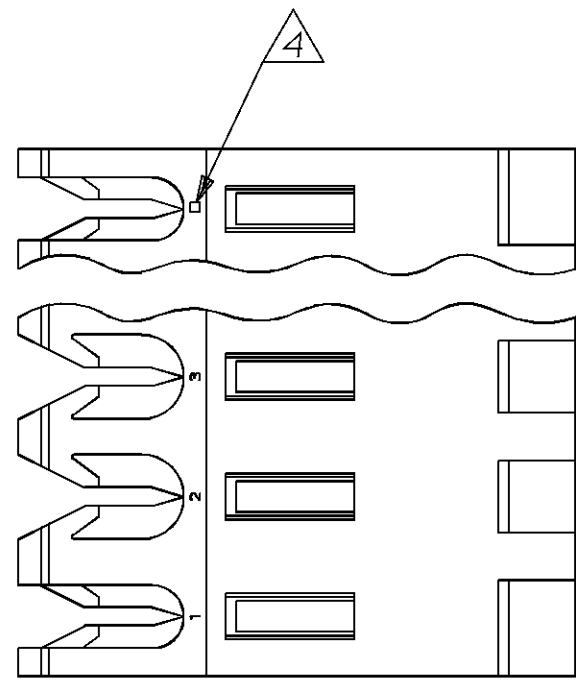


THIS DRAWING IS UNPUBLISHED. RELEASED FOR PUBLICATION
 BY AMP INCORPORATED. ALL RIGHTS RESERVED.

| LOC | DIST | REVISIONS | | | | | |
|-----|------|-----------|-----|--|---------|-----|------|
| | | P | LTR | DESCRIPTION | DATE | DWN | APVD |
| CM | 54 | J | | REACT -2 THRU -24 AND REV PER EC 0730-0242-95 | 3-12-96 | BL | RS |



- 1 MATERIAL: CONNECTOR - NYLON UL94V-2 (YELLOW).
CONTACTS - 0.30 [.012] THICK COPPER ALLOY
(0.00076 [.000030] GOLD)
- 2. CONTACTS ACCEPT 20 AWG WIRE WITH 2.41 [.095] MAX INSULATION DIAMETER.
- 3. CONTACTS MUST ACCEPT 1.14 ± 0.03 [.045 ± .001] SQUARE POST AND REMAIN LOCKED IN POSITION.
- 4 IDENTIFICATION NUMBER FOR LAST CIRCUIT MAY NOT APPEAR ON ALL ASSEMBLIES.
- 5. DIMENSIONS IN BRACKETS ARE IN INCHES.
- 6. HOUSING FEATURES ARE: FEED-THRU WITH LOCKING RAMP.

| | | | |
|-------|---------|----------------|------------|
| 95.10 | [3.744] | 24 | 2-641228-4 |
| 91.14 | [3.588] | 23 | 2-641228-3 |
| 87.17 | [3.432] | 22 | 2-641228-2 |
| 83.21 | [3.276] | 21 | 2-641228-1 |
| 79.25 | [3.120] | 20 | 2-641228-0 |
| 75.29 | [2.964] | 19 | 1-641228-9 |
| 71.32 | [2.808] | 18 | 1-641228-8 |
| 67.36 | [2.652] | 17 | 1-641228-7 |
| 63.40 | [2.496] | 16 | 1-641228-6 |
| 59.44 | [2.340] | 15 | 1-641228-5 |
| 55.47 | [2.184] | 14 | 1-641228-4 |
| 51.51 | [2.028] | 13 | 1-641228-3 |
| 47.55 | [1.872] | 12 | 1-641228-2 |
| 43.59 | [1.716] | 11 | 1-641228-1 |
| 39.62 | [1.560] | 10 | 1-641228-0 |
| 35.66 | [1.404] | 9 | 641228-9 |
| 31.70 | [1.248] | 8 | 641228-8 |
| 27.74 | [1.092] | 7 | 641228-7 |
| 23.77 | [.936] | 6 | 641228-6 |
| 19.81 | [.780] | 5 | 641228-5 |
| 15.85 | [.624] | 4 | 641228-4 |
| 11.89 | [.468] | 3 | 641228-3 |
| 7.92 | [.312] | 2 | 641228-2 |
| DIM A | | NO OF CIRCUITS | PART NO |

| | | | |
|--|--|------------------------------|---|
| <small>THIS DRAWING IS A CONTROLLED DOCUMENT FOR AMP INCORPORATED. IT IS SUBJECT TO CHANGE AND THE CONTROLLING ENGINEERING ORGANIZATION SHOULD BE CONTACTED FOR THE LATEST REVISION.</small> | | DWN B. LEWIS 3-12-96 | AMP Incorporated Harrisburg, PA 17105-3608 |
| <small>DIMENSIONS: mm [INCHES]</small> | | CHK R. SWING 3-12-96 | |
| <small>TOLERANCES UNLESS OTHERWISE SPECIFIED:</small> 0 PLC ±- 1 PLC ±- 2 PLC ±- 3 PLC ±0.13 [] 4 PLC ±- ANGLES ±0°30' FINISH | | APVD D. CLARK 3-12-96 | NAME MTA-156 CONNECTOR ASSEMBLY, 20 AWG, STANDARD |
| | | PRODUCT SPEC 108-1051 | SIZE A2 |
| MATERIAL 1 | | APPLICATION SPEC 114-1020 | CAGE CODE 00779 |
| | | WEIGHT - | DRAWING NO C=641228 |
| CUSTOMER DRAWING | | SCALE 4:1 | SHEET 1 OF 1 REV J |

METRIC