

FEATURES AND SPECIFICATIONS

Features and Benefits

- Sizes 4 to 25 circuits
- Terminates membrane switches, flat connector flat cable and flexible circuitry
- Insulation piercing terminals pre-assembled into housing
- Stripping of insulation not required

Reference Information

Product Specification: PSX40556-0001
 Packaging: Tube
 Tooling Information: See page F-41
 UL File No.: E29179
 CSA File No.: LR19980
 Mates With: 70431 and .025" pins
 Designed In: Inches

Electrical

Voltage: 250V
 Current: 1.0A
 Contact Resistance: 10mΩ max.
 Dielectric Withstanding Voltage: 500V AC
 Insulation Resistance: 1000 MΩ min.

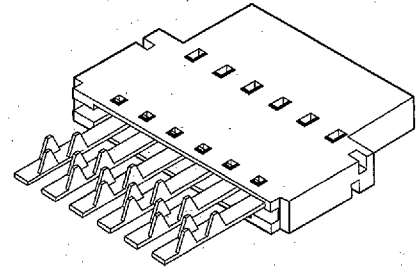
Physical

Housing: Polyester, UL 94V-0
 Contact: Copper Alloy
 Plating: See Table
 Temperature: -40 to +120°C

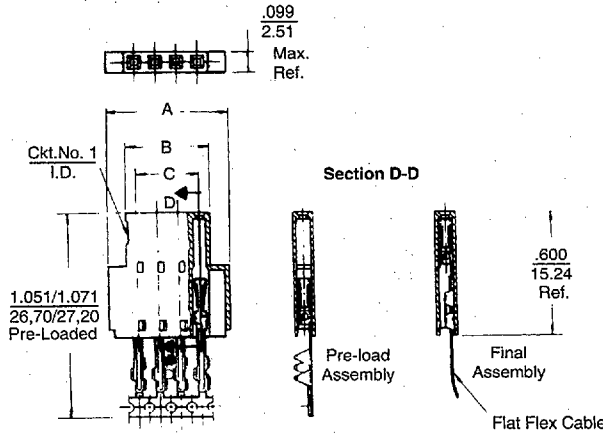


2.54mm (.100") Pitch Flex-C-Term™ Connector

40556



FFC/FPC Connectors



Delivered on a carrier with 20 pieces per strip.

Actual Size **Universal Polarizing Pin 40713-1**
 Order No. 15-04-0292

ORDERING INFORMATION AND DIMENSIONS

Circuits	Order No.		Dimension		
	Plating No. 1	Plating No. 2	A	B	C
4	• 22-41-9043	• 22-51-9043	14.74 (.580)	10.13 (.399)	7.62 (.300)
5	• 22-41-9053	• 22-51-9053	17.28 (.680)	12.67 (.499)	10.16 (.400)
6	• 22-41-9063	• 22-51-9063	19.82 (.780)	15.21 (.599)	12.70 (.500)
7	• 22-41-9073	• 22-51-9073	22.36 (.880)	17.75 (.699)	15.24 (.600)
8	• 22-41-9083	• 22-51-9083	24.90 (.980)	20.29 (.799)	17.78 (.700)
9	• 22-41-9093	• 22-51-9093	27.44 (1.080)	22.83 (.899)	20.32 (.800)
10	• 22-41-9103	• 22-51-9103	29.98 (1.180)	25.37 (.999)	22.86 (.900)
11	• 22-41-9113	• 22-51-9113	32.52 (1.280)	27.91 (1.099)	25.40 (1.000)
12	• 22-41-9123	• 22-51-9123	35.06 (1.380)	30.45 (1.199)	27.94 (1.100)
13	• 22-41-9133	• 22-51-9133	37.60 (1.480)	32.99 (1.299)	30.48 (1.200)
14	• 22-41-9143	• 22-51-9143	40.14 (1.580)	35.53 (1.399)	33.02 (1.300)
15	• 22-41-9153	• 22-51-9153	42.68 (1.680)	38.07 (1.499)	35.56 (1.400)
16	• 22-41-9163	• 22-51-9163	45.22 (1.780)	40.61 (1.599)	38.10 (1.500)

Circuits	Order No.		Dimension		
	Plating No. 1	Plating No. 2	A	B	C
17	• 22-41-9173	• 22-51-9173	47.76 (1.880)	43.15 (1.699)	40.64 (1.600)
18	• 22-41-9183	• 22-51-9183	50.30 (1.980)	45.69 (1.799)	43.18 (1.700)
19	• 22-41-9193	• 22-51-9193	52.84 (2.080)	48.23 (1.899)	45.72 (1.800)
20	• 22-41-9203	• 22-51-9203	55.38 (2.180)	50.77 (1.999)	48.26 (1.900)
21	• 22-41-9213	• 22-51-9213	57.92 (2.280)	53.31 (2.099)	50.80 (2.000)
22	• 22-41-9223	• 22-51-9223	60.46 (2.380)	55.85 (2.199)	53.34 (2.100)
23	• 22-41-9233	• 22-51-9233	63.00 (2.480)	58.39 (2.299)	55.88 (2.200)
24	• 22-41-9243	• 22-51-9243	65.54 (2.580)	60.93 (2.399)	58.42 (2.300)
25	• 22-41-9253	• 22-51-9253	68.08 (2.680)	63.47 (2.499)	60.96 (2.400)

Arbor Press Termination Tooling

Type	Order No.
Manual	11-04-0592
Pneumatic	11-04-0617

• US Standard Product, available through Molex franchised distributors

Plating No. 1: 200µ" min. Tin over 100µ" Copper

Plating No. 2: 15µ" Gold in contact area, 75µ" min. Tin/Lead in termination area all over 50µ" Nickel