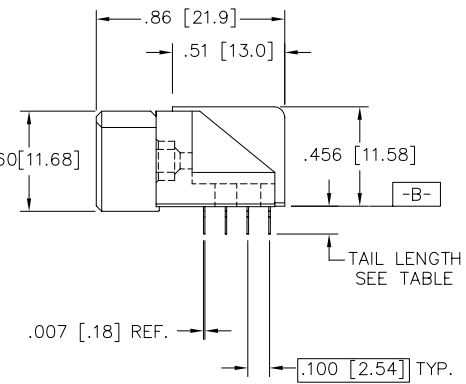
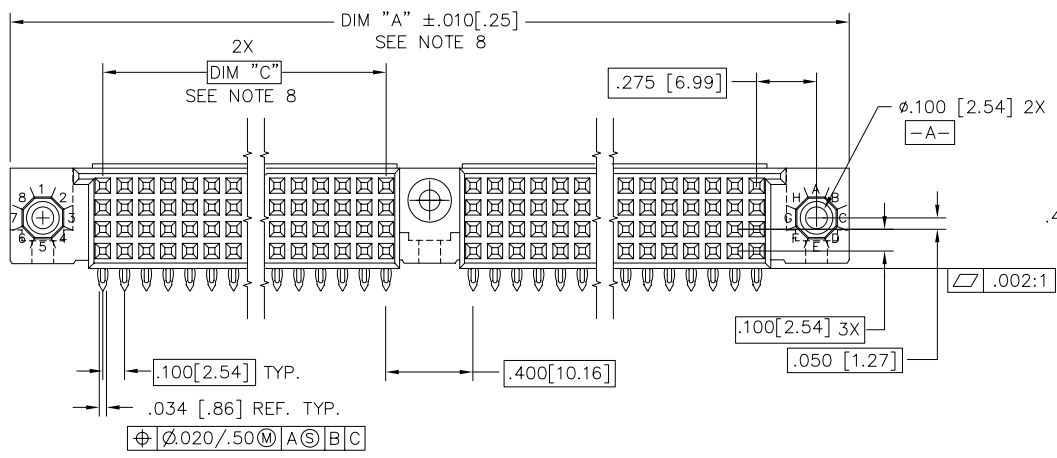
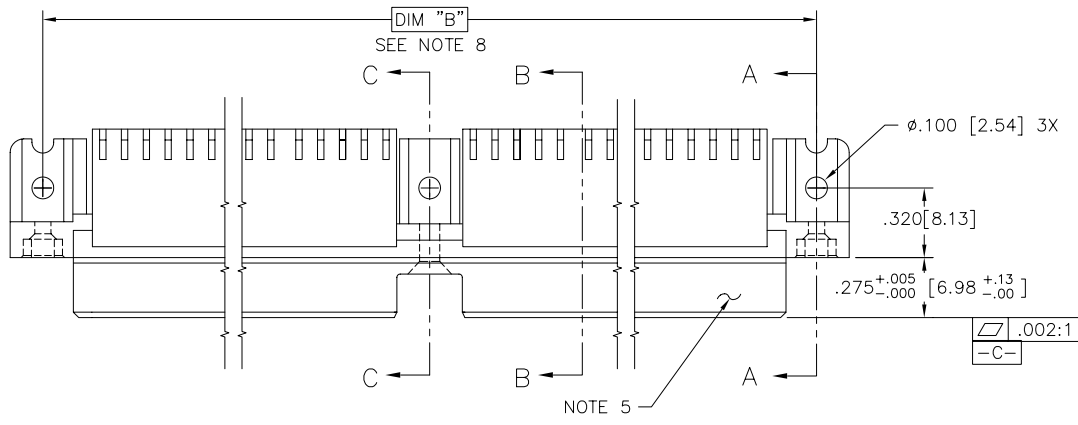




FCIconnect.com

Copyright FCI

PRODUCT NUMBER  
SEE TABLE

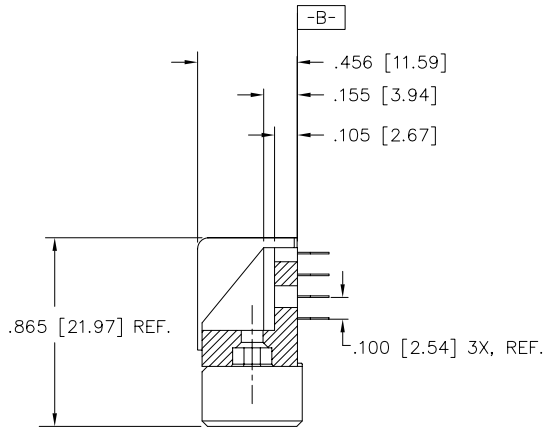


mat'l. code NOTE 3		surface ISO 1302 ✓		tolerance ISO 406 ISO 1101		projection INCH/MM		product family HPC	
ltr	ecn no	dr	date	tolerances unless otherwise specified		INCH/MM		title	
N	v91490	DLW	7/13/99	angles	linear	.xx±.01/.3		4 ROW R/A RECEPTACLE	
P	v00266	JWS	1/28/00			.xxx±.005/.13		PRESS FIT, 1 GUIDE PIN	
R	v10825	JRW	2/7/01	0'±2'		.xxxx±.0020/.051		scale 1:1	
S	v10960	MEM	3/14/01	dr	G.PETERS	6/10/93		dwg no	
T	v05-0969	DAI	10/25/05	enr	S.CLARK	6/10/93		sheet 1 of 4 size	
U	M06-0255	MHT	7/06/06	chr	S.CLARK	6/10/93		50643 A3	
sheet index		revision	U	U	U	U	U	type Product Customer Drawing	
sheet		sheet	1	2	3	4			

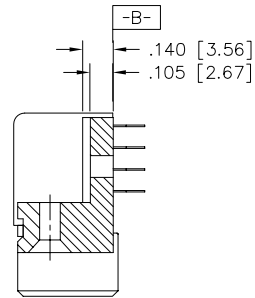


form: A3

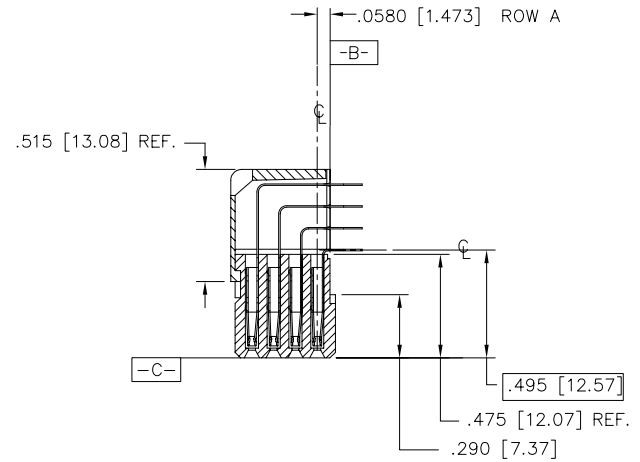
PRODUCT NUMBER  
SEE TABLE



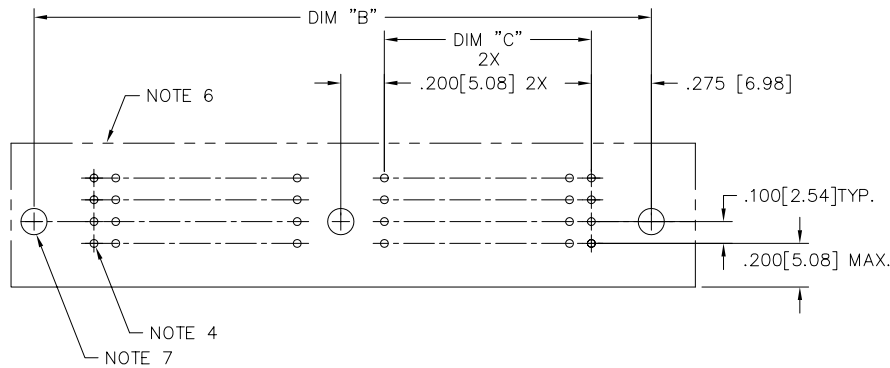
SECTION A-A



SECTION C-C



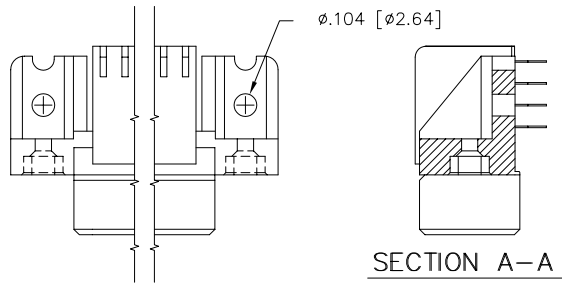
SECTION B-B



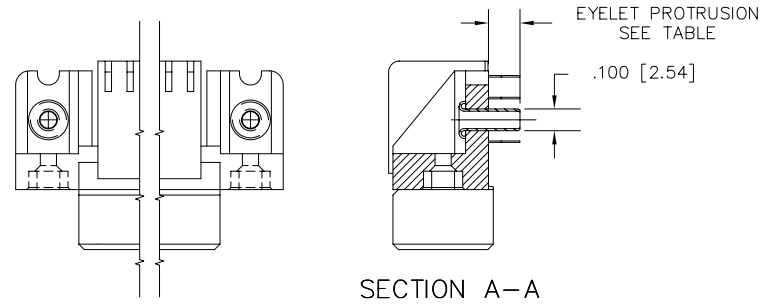
RECOMMENDED PCB LAYOUT  
(ALL HOLES LOCATED ON .100 [2.54]  
GRID UNLESS OTHERWISE SHOWN)

mat'l. code NOTE 3		surface ISO 1302 ✓	tolerance ISO 406 ISO 1101	projection INCH/MM	product family HPC
ltr	ecr	no	dr	date	title
U					4 ROW R/A RECEPTACLE PRESS FIT, 1 GUIDE PIN
				scale 1:1	dwg no 50643
				dr	G.PETERS 6/10/93
				enr	S.CLARK 6/10/93
				chr	S.CLARK 6/10/93
				appd	S.CLARK 6/10/93
sheet index	revision sheet				type Product Customer Drawing
					sheet 2 of 4 size A3

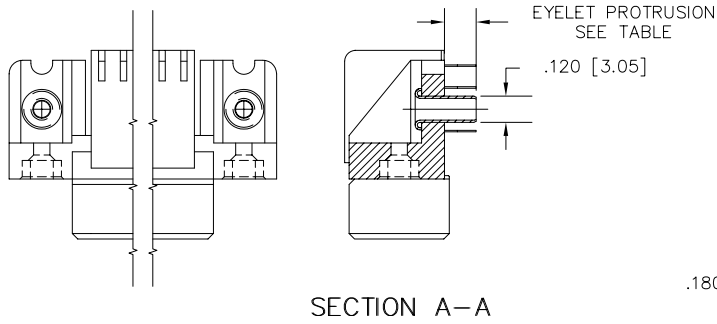
PRODUCT NUMBER  
SEE TABLE



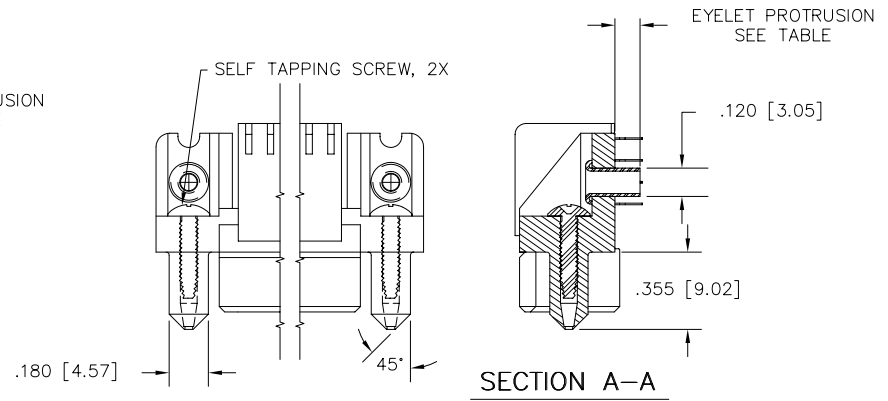
SPECIAL FEATURE OPTION A  
SEE NOTE 7



SPECIAL FEATURE OPTION B  
SEE NOTE 7



SPECIAL FEATURE OPTION C  
SEE NOTE 7



SPECIAL FEATURE OPTION D  
SEE NOTE 7

FCI  
FCIconnect.com

Copyright FCI

mat'l. code NOTE 3		surface ISO 1302 ✓	tolerance ISO 406 ISO 1101	projection ⊕	product family HPC
ltr	ecn	no	dr	date	tolerances unless otherwise specified
U					angles linear .xx±.01/.3
					0°±2' .xxx±.005/.13
					.xxx±.0020/.051
		dr	G.PETERS	6/10/93	
		enr	S.CLARK	6/10/93	
		chr	S.CLARK	6/10/93	
		app	S.CLARK	6/10/93	
sheet index	revision sheet				

title  
4 ROW R/A RECEPTACLE  
PRESS FIT, 1 GUIDE PIN

dwg no  
50643

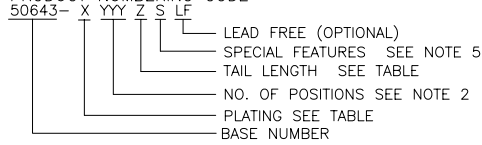
sheet 3 of 4 size  
A3

type Product Customer Drawing

PRODUCT NUMBER	NUMBER OF POSITIONS NOTE 2	TAIL LENGTH	SPECIAL FEATURES SEE NOTE 7	SOLDER TAIL PLATING	CONTACT PLATING	EYELET PROTRUSION	GUIDE PINS
50643-1YYYE	YYY	.125±.010/3.18±.25	N/A	TIN-LEAD	30u"/.76u Au	N/A	NONE
50643-2YYYELF	YYY	.125±.010/3.18±.25	N/A	TIN	30u"/.76u GXT	N/A	NONE
50643-1YYYEA	YYY	.125±.010/3.18±.25	"A"	TIN-LEAD	30u"/.76u Au	N/A	NONE
50643-2YYYEALF	YYY	.125±.010/3.18±.25	"A"	TIN	30u"/.76u GXT	N/A	NONE
50643-1YYYEB	YYY	.125±.010/3.18±.25	"B"	TIN-LEAD	30u"/.76u Au	.145/3.68	NONE
50643-2YYYEBLF	YYY	.125±.010/3.18±.25	"B"	TIN	30u"/.76u GXT	.145/3.68	NONE
50643-1YYYEC	YYY	.125±.010/3.18±.25	"C"	TIN-LEAD	30u"/.76u Au	.115/2.92	NONE
50643-2YYYECLF	YYY	.125±.010/3.18±.25	"C"	TIN	30u"/.76u GXT	.115/2.92	NONE
50643-1YYYED	YYY	.125±.010/3.18±.25	"D"	TIN-LEAD	30u"/.76u Au	.115/2.92	2
50643-2YYYEDLF	YYY	.125±.010/3.18±.25	"D"	TIN	30u"/.76u GXT	.115/2.92	2
50643-1YYYYF	YYY	.145±.010/3.68±.25	N/A	TIN-LEAD	30u"/.76u Au	N/A	NONE
50643-1YYYYFLF	YYY	.145±.010/3.68±.25	N/A	TIN	30u"/.76u GXT	N/A	NONE
50643-1YYYYFA	YYY	.145±.010/3.68±.25	"A"	TIN-LEAD	30u"/.76u Au	N/A	NONE
50643-2YYYYFALF	YYY	.145±.010/3.68±.25	"A"	TIN	30u"/.76u GXT	N/A	NONE
50643-1YYYYFC	YYY	.145±.010/3.68±.25	"C"	TIN-LEAD	30u"/.76u Au	.145/3.68	NONE
50643-1YYYYFCLF	YYY	.145±.010/3.68±.25	"C"	TIN	30u"/.76u GXT	.145/3.68	NONE
50643-1YYYYFD	YYY	.145±.010/3.68±.25	"D"	TIN-LEAD	30u"/.76u Au	.145/3.68	2
50643-1YYYYFDLF	YYY	.145±.010/3.68±.25	"D"	TIN	30u"/.76u GXT	.145/3.68	2

NOTES:

① PRODUCT NUMBERING CODE



⑧ LENGTH FORMULAS:

DIM "A" = .100[2.54] x NO. of COLUMNS + 1.05[26.7]  
 DIM "B" = .100[2.54] x NO. of COLUMNS + .750[19.05]  
 DIM "C" = .100[2.54] x NO. of COLUMNS DIVIDED BY 2 - .100[2.54]

9. THIS PRODUCT (WITH "LF" SUFFIX) MEETS EUROPEAN UNION DIRECTIVES AND OTHER COUNTRY REGULATIONS AS DESCRIBED IN GS-22-008.
10. THIS HOUSING WILL WITHSTAND EXPOSURE TO 260°C PEAK TEMPERATURE FOR 10-30 SECONDS IN A CONVECTION, INFRA-RED OR VAPOR PHASE REFLOW OVEN.

② THIS PRODUCT IS CONFIGURED IN SIZES OF 20 thru 140 COLUMNS IN INCREMENTS OF TWO. i.e.: 20,22,24,.....136,138,140.

③ PRESS BLOCK MATERIAL: HIGH TEMP. THERMOPLASTIC  
 HOUSING MATERIAL: GLASS AND MINERAL FILLED  
 HIGH TEMP. THERMOPLASTIC, FLAME RETARDANT  
 PER UL94V-0. COLOR: BLACK.  
 CONTACT MATERIAL: BeCu.

④ DRILLED HOLE DIA. OF .0453±.001 FINISHED TO .04000±.0030 BY PLATING SnPb(60/40), .0003 - .0006 w/Cu UNDERPLATING AS NEEDED.

⑤ MANUFACTURE'S LOGO, P/N, AND LOT CODE TO APPEAR ON THIS SURFACE.

⑥ FOR PCB STAY AWAY ZONE SEE TA-0954.

⑦ SPECIAL FEATURES:

- = IF NO SPECIAL FEATURE CODE IS SELECTED, CONNECTOR WILL APPEAR AS SHOWN. PCB MOUNTING HOLE DIMENSION TO BE  $\phi.120\pm.003$  [3.05±0.07]
- "A" = IF SPECIFIED, CONNECTOR WILL APPEAR AS SHOWN ON SHEET 3. PCB MOUNTING HOLE DIMENSION TO BE  $\phi.100\pm.003$  [2.54±0.07].
- "B" = IF SPECIFIED, CONNECTOR WILL HAVE PRE-INSTALLED EYELET FOR P.C.B. ATTACHMENT IN A  $\phi.100\pm.003$  [2.54±0.07] MOUNTING HOLE. SEE SHEET 3. (AVAILABLE IN "E" TAIL LENGTH. ONLY).
- "C" = IF SPECIFIED, CONNECTOR WILL HAVE PRE-INSTALLED EYELET FOR P.C.B. ATTACHMENT IN A  $\phi.120\pm.003$  [2.54±0.07] MOUNTING HOLE. SEE SHEET 3.
- "D" = IF SPECIFIED, CONNECTOR WILL HAVE PRE-INSTALLED EYELET WITH MOLDED GUIDE PINS FOR P.C.B. ATTACHMENT IN A  $\phi.120\pm.003$  [2.54±0.07] MOUNTING HOLE. SEE SHEET 3.

mat'l. code NOTE 3		surface ISO 1302 ✓	tolerance ISO 406 ISO 1101	projection 	product family HPC
ltr	ecn	no	dr	date	title
U					4 ROW R/A RECEPTACLE PRESS FIT, 1 GUIDE PIN
				angles	linear
				0°±2'	.xx±.01/.3 .xxx±.005/.13 .xxxx±.0020/.05
				dr	G.PETERS 6/10/93
				enr	S.CLARK 6/10/93
				chr	S.CLARK 6/10/93
				appd	S.CLARK 6/10/93
sheet index	revision sheet				scale 1:1
				dwg no 50643 sheet 4 of 4 size A3	
				type Product Customer Drawing	