



CONNECTORS MANUFACTURER

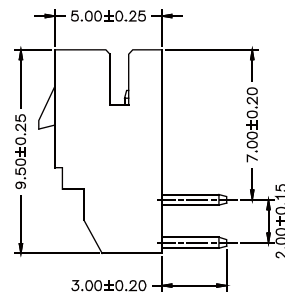
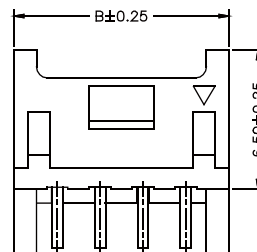
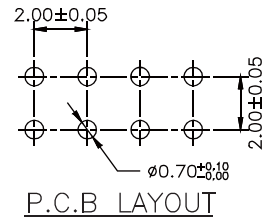
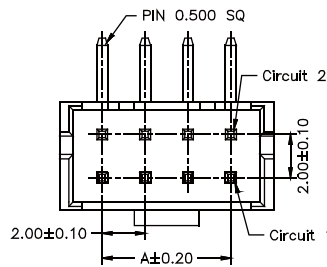
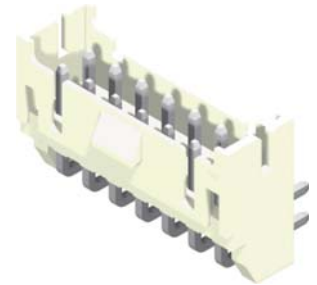
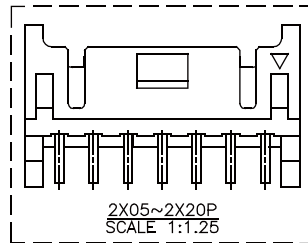
2.0mm Wafer Right Angle / Straight Front Latch Type

Specifications

Current Rating: 3A AC,DC
 Voltage Rating: 250V AC,DC
 Temperature Range: -25°C to +85°C
 Contact Resistance: 10mΩ Max
 Insulation Resistance: 1000MΩ Min
 Withstanding Voltage: 800V AC/minute
 Terminal: Brass / Tin Plated
 Material: Nylon 66, UL94V-0
 *Mates With 2004H-2XXW2-L

Part No.	Dimensions	
	A	B
2004R-202TW2-L	2.00	6.00
2004R-203TW2-L	4.00	8.00
2004R-204TW2-L	6.00	10.00
2004R-205TW2-L	8.00	12.00
2004R-206TW2-L	10.00	14.00
2004R-207TW2-L	12.00	16.00
2004R-208TW2-L	14.00	18.00
2004R-209TW2-L	16.00	20.00
2004R-210TW2-L	18.00	22.00
2004R-211TW2-L	20.00	24.00
2004R-212TW2-L	22.00	26.00
2004R-213TW2-L	24.00	28.00
2004R-214TW2-L	26.00	30.00
2004R-215TW2-L	28.00	32.00
2004R-216TW2-L	30.00	34.00
2004R-217TW2-L	32.00	36.00
2004R-218TW2-L	34.00	38.00
2004R-219TW2-L	36.00	40.00
2004R-220TW2-L	38.00	42.00
2004R-221TW2-L	40.00	44.00

Part No.: 2004R-2XXTW2-L



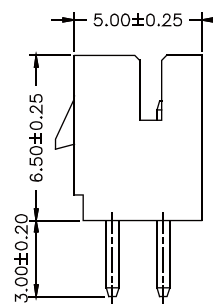
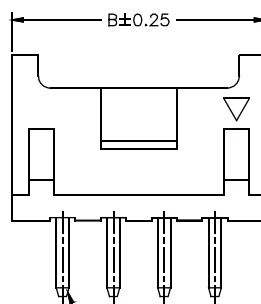
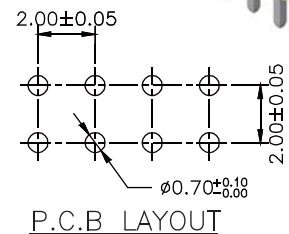
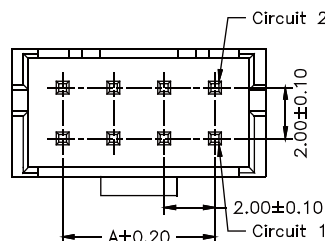
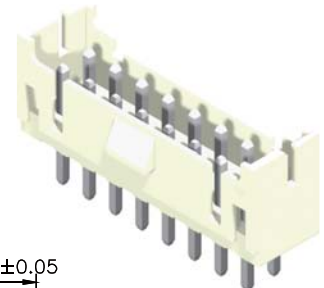
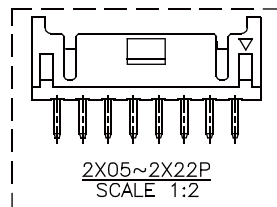
2X02~2X04P

Specifications

Current Rating: 3A AC,DC
 Voltage Rating: 250V AC,DC
 Temperature Range: -25°C to +85°C
 Contact Resistance: 10mΩ Max
 Insulation Resistance: 1000MΩ Min
 Withstanding Voltage: 800V AC/minute
 Terminal: Brass / Tin Plated
 Material: Nylon 66, UL94V-0
 *Mates With 2004H-2XXW2-L

Part No.	Dimensions	
	A	B
2004S-202TW2-L	2.00	6.00
2004S-203TW2-L	4.00	8.00
2004S-204TW2-L	6.00	10.00
2004S-205TW2-L	8.00	12.00
2004S-206TW2-L	10.00	14.00
2004S-207TW2-L	12.00	16.00
2004S-208TW2-L	14.00	18.00
2004S-209TW2-L	16.00	20.00
2004S-210TW2-L	18.00	22.00
2004S-211TW2-L	20.00	24.00
2004S-212TW2-L	22.00	26.00
2004S-213TW2-L	24.00	28.00
2004S-214TW2-L	26.00	30.00
2004S-215TW2-L	28.00	32.00
2004S-216TW2-L	30.00	34.00
2004S-217TW2-L	32.00	36.00
2004S-218TW2-L	34.00	38.00
2004S-219TW2-L	36.00	40.00
2004S-220TW2-L	38.00	42.00
2004S-221TW2-L	40.00	44.00
2004S-222TW2-L	42.00	46.00

Part No.: 2004S-2XXTW2-L



PIN 0.500 SQ
2X02~2X04P

Housing wafer Terminal



ROHS