

## FEATURES AND SPECIFICATIONS

### Features and Benefits

- Polarized
- Latch window retains positive lock on 70013 after mating
- 4 wall shielding provides unmated pin protection
- Standoffs minimize flux retention
- 4-sided smooth surface pin for quality interface

### Reference Information

Product Specification: PS-8723

Packaging: Tube

UL File No.: E29179 (H)

Mates With: 8724 Version A—C-Grid Receptacles, and  
70450A crimp housing  
8724 Version B—70013A (10 to 50 circuits)

Designed In: Inches

### Electrical

Voltage: 250V

Current: 3.0A

Contact Resistance: 15mΩ max.

Dielectric Withstanding Voltage: 1500V

Insulation Resistance: 1000 MΩ min.

### Mechanical

Pin Retention to Housing: 17.79N (4 lb)

Durability: 25 cycles Tin/Lead and 50 cycles Gold

### Physical

Housing: Glass-filled nylon, UL 94V-0

Contact: Phosphor Bronze

Plating: See Table

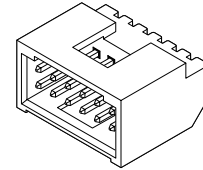
Operating Temperature: -40 to +105°C

**molex®** 2.54mm (.100") Pitch  
**C-Grid®**

**Shrouded Header**

**8724**

**Dual Row  
Right Angle**

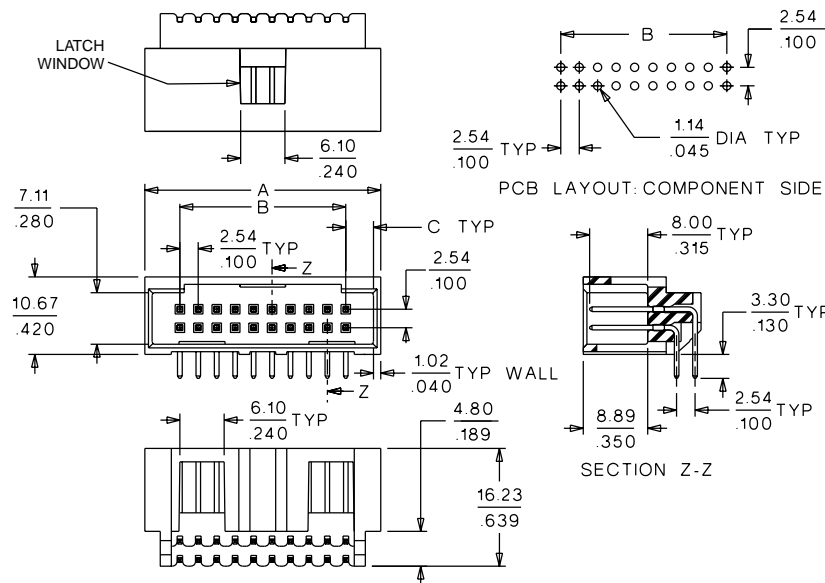


**C**

**2.54mm (.100") Pitch**

## CATALOG DRAWING (FOR REFERENCE ONLY)

**Not For Use With C-Grid III™ Components**



## ORDERING INFORMATION AND DIMENSIONS

Plating Option	Order No.	
	Version A <sup>1</sup> C = 1.68mm (.066")	Version B C = 3.81mm (.150")
15μm Gold	• 15-29-70XX	15-29-72XX
30μm Gold	• 15-41-80XX	15-41-82XX
150μm Tin/Lead	• 15-42-70XX	15-42-72XX

Replace XX with no. of circuits, 06-72 (even only)

Circuits	Dimension			
	Version A		Version B	
	A	B	A	B
6*	10.47 (.412)	5.08 (.200)	14.74 (.580)	5.08 (.200)
8*	13.01 (.512)	7.62 (.300)	17.28 (.680)	7.62 (.300)
10	15.55 (.612)	10.16 (.400)	19.82 (.780)	10.16 (.400)
12	18.09 (.712)	12.70 (.500)	22.36 (.880)	12.70 (.500)
14	20.63 (.812)	15.24 (.600)	24.90 (.980)	15.24 (.600)
16	23.17 (.912)	17.78 (.700)	27.44 (1.080)	17.78 (.700)
18	25.71 (1.012)	20.32 (.800)	29.98 (1.180)	20.32 (.800)
20	28.25 (1.112)	22.86 (.900)	32.52 (1.280)	22.86 (.900)
22	30.79 (1.212)	25.40 (1.000)	35.06 (1.380)	25.40 (1.000)
24	33.33 (1.312)	27.94 (1.100)	37.60 (1.480)	27.94 (1.100)
26	35.87 (1.412)	30.48 (1.200)	40.14 (1.580)	30.48 (1.200)
28	38.41 (1.512)	33.02 (1.300)	42.68 (1.680)	33.02 (1.300)
30	40.95 (1.612)	35.56 (1.400)	45.22 (1.780)	35.56 (1.400)
32	43.49 (1.712)	38.10 (1.500)	47.76 (1.880)	38.10 (1.500)
34	46.03 (1.812)	40.64 (1.600)	50.30 (1.980)	40.64 (1.600)
36	48.57 (1.912)	43.18 (1.700)	52.84 (2.080)	43.18 (1.700)
38	51.11 (2.012)	45.72 (1.800)	55.38 (2.180)	45.72 (1.800)

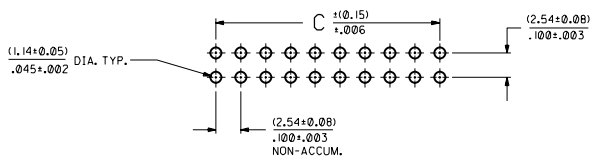
Circuits	Dimension			
	Version A		Version B	
	A	B	A	B
40	53.65 (2.112)	48.26 (1.900)	57.92 (2.280)	48.26 (1.900)
42	56.19 (2.212)	50.80 (2.000)	60.46 (2.380)	50.80 (2.000)
44	58.73 (2.312)	53.34 (2.100)	63.00 (2.480)	53.34 (2.100)
46	61.27 (2.412)	55.88 (2.200)	65.54 (2.580)	55.88 (2.200)
48	63.81 (2.512)	58.42 (2.300)	68.08 (2.680)	58.42 (2.300)
50	66.35 (2.612)	60.96 (2.400)	70.62 (2.780)	60.96 (2.400)
52	68.89 (2.712)	63.50 (2.500)	73.16 (2.880)	63.50 (2.500)
54	71.43 (2.812)	66.04 (2.600)	75.70 (2.980)	66.04 (2.600)
56	73.97 (2.912)	68.58 (2.700)	78.24 (3.080)	68.58 (2.700)
58	76.51 (3.012)	71.12 (2.800)	80.78 (3.180)	71.12 (2.800)
60	79.05 (3.112)	73.66 (2.900)	83.32 (3.280)	73.66 (2.900)
62	81.59 (3.212)	76.20 (3.000)	85.86 (3.380)	76.20 (3.000)
64	84.13 (3.312)	78.74 (3.100)	88.40 (3.480)	78.74 (3.100)
66	86.67 (3.412)	81.28 (3.200)	90.94 (3.580)	81.28 (3.200)
68	89.21 (3.512)	83.82 (3.300)	93.48 (3.680)	83.82 (3.300)
70	91.75 (3.612)	86.36 (3.400)	96.02 (3.780)	86.36 (3.400)
72	94.29 (3.712)	88.90 (3.500)	98.56 (3.880)	88.90 (3.500)

\* US Standard Product, available through Molex franchised distributors

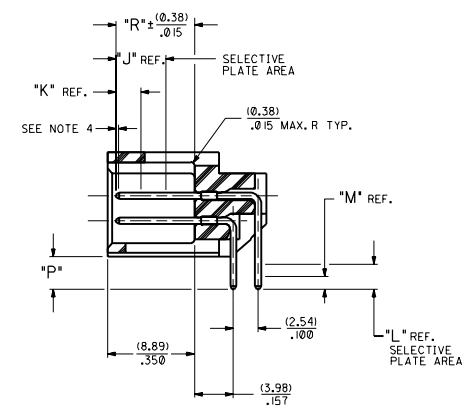
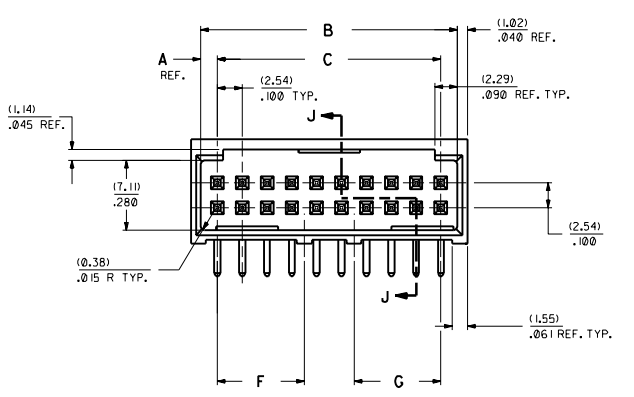
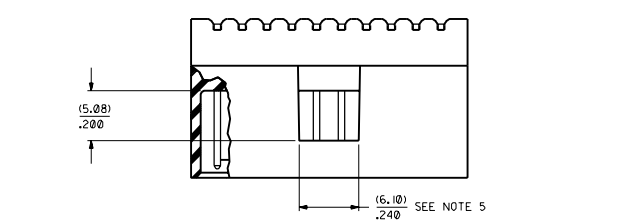
\* Note: No latching window available for 6-circuit and 8-circuit—Version A; No latching window available for 6-circuit—Version B

<sup>1</sup> Version A is never to be used with interim clips

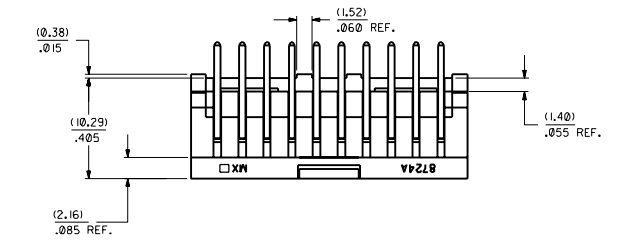
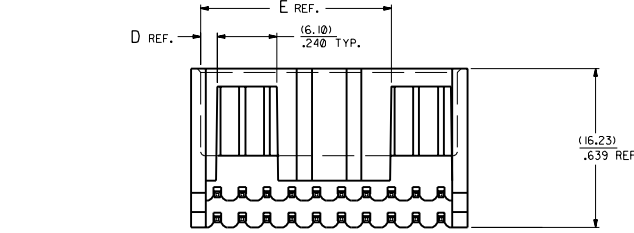
Note: Dimension C = End Wall



RECOMMENDED P.C. BOARD HOLE LAYOUT



SECTION J-J



NOTES:

- 20 CIRCUIT SIZE SHOWN FOR ILLUSTRATION PURPOSES.
- PIN PUSHOUT FORCE: (11.79 N) 1/4 LBS.
- PINS MUST MEET SOLDERABILITY SPEC. MIL-STD-202 METHOD 208B.
- ROW TO ROW PIN HEIGHT VARIATION MUST NOT EXCEED (0.13)±.005 IN.
- WINDOW NOT AVAILABLE ON 6 OR 8 CIRCUIT SIZE.
- FOR CHARTED DIMENSIONS AND ASSEMBLY N.O.S NOT SHOWN ON THIS SHEET - SEE SHEET 2.
- PRODUCT CONFORMS TO PS-8723.

CKT.	8724						
	DIM. 'A'	DIM. 'B'	DIM. 'C'	DIM. 'D'	DIM. 'E'	DIM. 'F'	DIM. 'G'
06	(1.68)±.066	(8.43)±.332	(5.08)±.200	(1.68)±.066			
08	(1.68)±.066	(10.37)±.432	(7.62)±.300	(1.68)±.066			
10	(1.68)±.066	(13.51)±.532	(10.16)±.400	(1.68)±.066			
12	(1.68)±.066	(16.05)±.632	(12.70)±.500	(1.68)±.066			
14	(1.68)±.066	(18.59)±.732	(15.24)±.600	(1.68)±.066			
16	(1.68)±.066	(21.13)±.832	(17.78)±.700	(1.68)±.066			
18	(1.68)±.066	(23.67)±.932	(20.32)±.800	(1.68)±.066			
20	(1.68)±.066	(26.21)±.1.032	(22.86)±.900	(1.68)±.066	(19.46)±.766		
22	(1.68)±.066	(28.75)±.1.132	(25.40)±.1.000	(1.68)±.066	(22.00)±.866		
24	(1.68)±.066	(31.29)±.1.232	(27.94)±.1.100	(1.68)±.066	(24.54)±.966	(16.64)±.655	
26	(1.68)±.066	(33.83)±.1.332	(30.48)±.1.200	(1.68)±.066	(27.08)±.1.066	(16.64)±.655	
28	(1.68)±.066	(36.37)±.1.432	(33.02)±.1.300	(1.68)±.066	(29.62)±.1.166	(16.64)±.655	
30	(1.68)±.066	(38.91)±.1.532	(35.56)±.1.400	(1.68)±.066	(32.16)±.1.266	(16.64)±.655	
32	(1.68)±.066	(41.45)±.1.632	(38.10)±.1.500	(1.68)±.066	(34.70)±.1.366	(16.64)±.655	
34	(1.68)±.066	(43.99)±.1.732	(40.64)±.1.600	(1.68)±.066	(37.24)±.1.466	(16.64)±.655	
36	(1.68)±.066	(46.53)±.1.832	(43.18)±.1.700	(1.68)±.066	(39.78)±.1.566	(16.64)±.655	
38	(1.68)±.066	(49.07)±.1.932	(45.72)±.1.800	(1.68)±.066	(42.32)±.1.666	(16.64)±.655	
40	(1.68)±.066	(51.61)±.2.032	(48.26)±.1.900	(1.68)±.066	(44.86)±.1.766	(16.64)±.655	
42	(1.68)±.066	(54.15)±.2.132	(50.80)±.2.000	(1.68)±.066	(47.40)±.1.866	(16.64)±.655	
44	(1.68)±.066	(56.69)±.2.232	(53.34)±.2.100	(1.68)±.066	(49.94)±.1.966	(16.64)±.655	
46	(1.68)±.066	(59.23)±.2.332	(55.88)±.2.200	(1.68)±.066	(52.48)±.2.066	(16.64)±.655	
48	(1.68)±.066	(61.77)±.2.432	(58.42)±.2.300	(1.68)±.066	(55.02)±.2.166	(16.64)±.655	
50	(1.68)±.066	(64.31)±.2.532	(60.96)±.2.400	(1.68)±.066	(57.56)±.2.266	(16.64)±.655	
52	(1.68)±.066	(66.85)±.2.632	(63.50)±.2.500	(1.68)±.066	(60.10)±.2.366	(16.64)±.655	
54	(1.68)±.066	(69.39)±.2.732	(66.04)±.2.600	(1.68)±.066	(62.64)±.2.466	(16.64)±.655	
56	(1.68)±.066	(71.93)±.2.832	(68.58)±.2.700	(1.68)±.066	(65.18)±.2.566	(16.64)±.655	
58	(1.68)±.066	(74.47)±.2.932	(71.12)±.2.800	(1.68)±.066	(67.72)±.2.666	(16.64)±.655	
60	(1.68)±.066	(77.01)±.3.032	(73.66)±.2.900	(1.68)±.066	(70.26)±.2.766	(16.64)±.655	
62	(1.68)±.066	(79.55)±.3.132	(76.20)±.3.000	(1.68)±.066	(72.80)±.2.866	(16.64)±.655	
64	(1.68)±.066	(82.09)±.3.232	(78.74)±.3.100	(1.68)±.066	(75.34)±.2.966	(16.64)±.655	
66	(1.68)±.066	(84.63)±.3.332	(81.28)±.3.200	(1.68)±.066	(77.88)±.3.066	(16.64)±.655	
68	(1.68)±.066	(87.17)±.3.432	(83.82)±.3.300	(1.68)±.066	(80.42)±.3.166	(16.64)±.655	
70	(1.68)±.066	(89.71)±.3.532	(86.36)±.3.400	(1.68)±.066	(82.96)±.3.266	(16.64)±.655	
72	(1.68)±.066	(92.25)±.3.632	(88.90)±.3.500	(1.68)±.066	(85.50)±.3.366	(16.64)±.655	

MATERIAL:

SHROUDED WAFER: GLASS FILLED NYLON, COLOR: BLACK, UL94 V-0.  
PINS: PHOSPHOR BRONZE, SEE SHEET 2 FOR FINISHES.

ASSEMBLY STYLES "A", "B", AND "G"

SALES ASSEMBLY  
WAFER - RIGHT ANGLE FULLY SHROUDED  
.100 GRID-FOR USE W/ .025 SQ. PINS  
WITH .066 END WALLS

MOLEX INCORPORATED  
SEE CHART SDA-8724-\*\*\*\*\*

REVISIONS

REV.	DATE	BY	DESCRIPTION
1			
2			
3			
4			
5			
6			
7			
8			
9			
10			

ENGINEERING PART NUMBER A-8724-	RELEASE FOR MANUFACTURE	P REF.	PLATING (SEE NOTES ON THIS SHEET)	CONNECTOR END PLATING				P.C. BOARD END PLATING			PACKAGING (INFORMATION) PK-70873-	
				TYPE	J LENGTH	K MEAS.	R ±(0.38) .015	TYPE	L LENGTH	M MEAS.		
				TIN-LEAD	(2.54) .100	(8.00) .315	(0.00)	TIN-LEAD	(2.54) .100	(8.00) .315		
06A164 / 72A164	RFM	(3.30) .130	TIN-LEAD	TIN-LEAD	(2.54) .100	(8.00) .315	(0.00)	TIN-LEAD	(2.54) .100	(8.00) .315	(0.00)	0019
06B164 / 72B164	RFM	(5.08) .200	TIN-LEAD	TIN-LEAD	(2.54) .100	(8.00) .315	(0.00)	TIN-LEAD	(2.54) .100	(8.00) .315	(0.00)	0019
06A571 / 72A571	RFM	(3.30) .130	15 GOLD	GOLD	(5.08) .200	(2.54) .100	(8.00) .315	TIN-LEAD	(2.54) .100	(8.00) .315	(1.27) .050	0019
06B571 / 72B571	RFM	(5.08) .200	15 GOLD	GOLD	(5.08) .200	(2.54) .100	(8.00) .315	TIN-LEAD	(2.54) .100	(8.00) .315	(1.27) .050	0019
06A574 / 72A574	RFM	(3.30) .130	30 GOLD	GOLD	(5.08) .200	(2.54) .100	(8.00) .315	TIN-LEAD	(2.54) .100	(8.00) .315	(1.27) .050	0019
06B574 / 72B574	RFM	(5.08) .200	30 GOLD	GOLD	(5.08) .200	(2.54) .100	(8.00) .315	TIN-LEAD	(2.54) .100	(8.00) .315	(1.27) .050	0019
06C164 / 72C164	RFM	(3.30) .130	TIN-LEAD	TIN-LEAD	(2.54) .100	(6.35) .250	(0.00)	TIN-LEAD	(2.54) .100	(8.00) .315	(1.27) .050	0019

**PLATING FINISHES:**

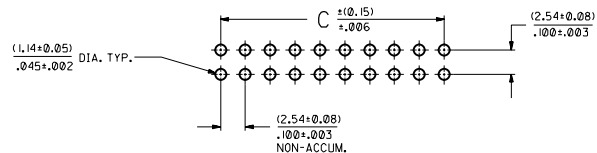
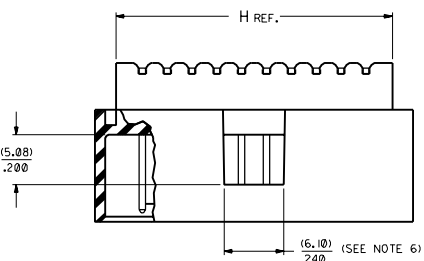
**TIN-LEAD** TIN-LEAD (Sn-Pb) ALLOY OVER ENTIRE PIN;  
THICKNESS=(3.75 MICROMETER)/75 MICROINCH MINIMUM;  
NICKEL (Ni) UNDERPLATE OVER ENTIRE PIN.

**15 GOLD** SELECTIVE GOLD (Au) IN THE CONTACT AREA;  
THICKNESS=(0.37 MICROMETER)/15 MICROINCH MINIMUM;  
SELECTIVE TIN-LEAD (Sn-Pb) ALLOY IN THE PC TAIL AREA;  
THICKNESS=(1.88 MICROMETER)/75 MICROINCH MINIMUM;  
NICKEL (Ni) UNDERPLATE OVER ENTIRE PIN.

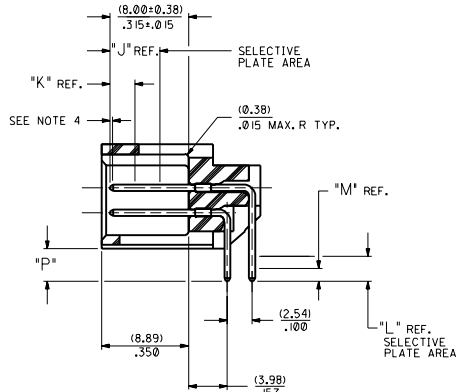
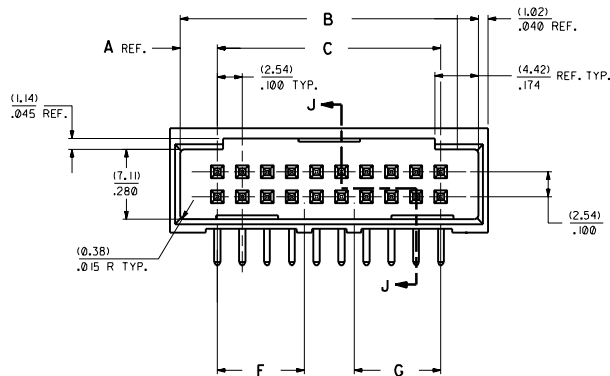
**30 GOLD** SELECTIVE GOLD (Au) IN THE CONTACT AREA;  
THICKNESS=(0.75 MICROMETER)/30 MICROINCH MINIMUM;  
SELECTIVE TIN-LEAD (Sn-Pb) ALLOY IN THE PC TAIL AREA;  
THICKNESS=(1.88 MICROMETER)/75 MICROINCH MINIMUM;  
NICKEL (Ni) UNDERPLATE OVER ENTIRE PIN.

NO. OF CKTS	**A164		**B164		**A571		**B571		**A574		**B574		**G164	
	EDP NUMBER	ENG NUMBER	EDP NUMBER	ENG NUMBER	EDP NUMBER	ENG NUMBER	EDP NUMBER	ENG NUMBER	EDP NUMBER	ENG NUMBER	EDP NUMBER	ENG NUMBER	EDP NUMBER	ENG NUMBER
06	15-42-7006	A-8724-06A164	15-42-7106	A-8724-06B164	15-29-7006	A-8724-06A571	15-29-7106	A-8724-06B571	15-41-8006	A-8724-06A574	15-41-8106	A-8724-06B574	15-41-9106	A-8724-06G164
08	15-42-7008	A-8724-08A164	15-42-7108	A-8724-08B164	15-29-7008	A-8724-08A571	15-29-7108	A-8724-08B571	15-41-8008	A-8724-08A574	15-41-8108	A-8724-08B574	15-41-9108	A-8724-08G164
10	15-42-7010	A-8724-10A164	15-42-7110	A-8724-10B164	15-29-7010	A-8724-10A571	15-29-7110	A-8724-10B571	15-41-8010	A-8724-10A574	15-41-8110	A-8724-10B574	15-41-9110	A-8724-10G164
12	15-42-7012	A-8724-12A164	15-42-7112	A-8724-12B164	15-29-7012	A-8724-12A571	15-29-7112	A-8724-12B571	15-41-8012	A-8724-12A574	15-41-8112	A-8724-12B574	15-41-9112	A-8724-12G164
14	15-42-7014	A-8724-14A164	15-42-7114	A-8724-14B164	15-29-7014	A-8724-14A571	15-29-7114	A-8724-14B571	15-41-8014	A-8724-14A574	15-41-8114	A-8724-14B574	15-41-9114	A-8724-14G164
16	15-42-7016	A-8724-16A164	15-42-7116	A-8724-16B164	15-29-7016	A-8724-16A571	15-29-7116	A-8724-16B571	15-41-8016	A-8724-16A574	15-41-8116	A-8724-16B574	15-41-9116	A-8724-16G164
18	15-42-7018	A-8724-18A164	15-42-7118	A-8724-18B164	15-29-7018	A-8724-18A571	15-29-7118	A-8724-18B571	15-41-8018	A-8724-18A574	15-41-8118	A-8724-18B574	15-41-9118	A-8724-18G164
20	15-42-7020	A-8724-20A164	15-42-7120	A-8724-20B164	15-29-7020	A-8724-20A571	15-29-7120	A-8724-20B571	15-41-8020	A-8724-20A574	15-41-8120	A-8724-20B574	15-41-9120	A-8724-20G164
22	15-42-7022	A-8724-22A164	15-42-7122	A-8724-22B164	15-29-7022	A-8724-22A571	15-29-7122	A-8724-22B571	15-41-8022	A-8724-22A574	15-41-8122	A-8724-22B574	15-41-9122	A-8724-22G164
24	15-42-7024	A-8724-24A164	15-42-7124	A-8724-24B164	15-29-7024	A-8724-24A571	15-29-7124	A-8724-24B571	15-41-8024	A-8724-24A574	15-41-8124	A-8724-24B574	15-41-9124	A-8724-24G164
26	15-42-7026	A-8724-26A164	15-42-7126	A-8724-26B164	15-29-7026	A-8724-26A571	15-29-7126	A-8724-26B571	15-41-8026	A-8724-26A574	15-41-8126	A-8724-26B574	15-41-9126	A-8724-26G164
28	15-42-7028	A-8724-28A164	15-42-7128	A-8724-28B164	15-29-7028	A-8724-28A571	15-29-7128	A-8724-28B571	15-41-8028	A-8724-28A574	15-41-8128	A-8724-28B574	15-41-9128	A-8724-28G164
30	15-42-7030	A-8724-30A164	15-42-7130	A-8724-30B164	15-29-7030	A-8724-30A571	15-29-7130	A-8724-30B571	15-41-8030	A-8724-30A574	15-41-8130	A-8724-30B574	15-41-9130	A-8724-30G164
32	15-42-7032	A-8724-32A164	15-42-7132	A-8724-32B164	15-29-7032	A-8724-32A571	15-29-7132	A-8724-32B571	15-41-8032	A-8724-32A574	15-41-8132	A-8724-32B574	15-41-9132	A-8724-32G164
34	15-42-7034	A-8724-34A164	15-42-7134	A-8724-34B164	15-29-7034	A-8724-34A571	15-29-7134	A-8724-34B571	15-41-8034	A-8724-34A574	15-41-8134	A-8724-34B574	15-41-9134	A-8724-34G164
36	15-42-7036	A-8724-36A164	15-42-7136	A-8724-36B164	15-29-7036	A-8724-36A571	15-29-7136	A-8724-36B571	15-41-8036	A-8724-36A574	15-41-8136	A-8724-36B574	15-41-9136	A-8724-36G164
38	15-42-7038	A-8724-38A164	15-42-7138	A-8724-38B164	15-29-7038	A-8724-38A571	15-29-7138	A-8724-38B571	15-41-8038	A-8724-38A574	15-41-8138	A-8724-38B574	15-41-9138	A-8724-38G164
40	15-42-7040	A-8724-40A164	15-42-7140	A-8724-40B164	15-29-7040	A-8724-40A571	15-29-7140	A-8724-40B571	15-41-8040	A-8724-40A574	15-41-8140	A-8724-40B574	15-41-9140	A-8724-40G164
42	15-42-7042	A-8724-42A164	15-42-7142	A-8724-42B164	15-29-7042	A-8724-42A571	15-29-7142	A-8724-42B571	15-41-8042	A-8724-42A574	15-41-8142	A-8724-42B574	15-41-9142	A-8724-42G164
44	15-42-7044	A-8724-44A164	15-42-7144	A-8724-44B164	15-29-7044	A-8724-44A571	15-29-7144	A-8724-44B571	15-41-8044	A-8724-44A574	15-41-8144	A-8724-44B574	15-41-9144	A-8724-44G164
46	15-42-7046	A-8724-46A164	15-42-7146	A-8724-46B164	15-29-7046	A-8724-46A571	15-29-7146	A-8724-46B571	15-41-8046	A-8724-46A574	15-41-8146	A-8724-46B574	15-41-9146	A-8724-46G164
48	15-42-7048	A-8724-48A164	15-42-7148	A-8724-48B164	15-29-7048	A-8724-48A571	15-29-7148	A-8724-48B571	15-41-8048	A-8724-48A574	15-41-8148	A-8724-48B574	15-41-9148	A-8724-48G164
50	15-42-7050	A-8724-50A164	15-42-7150	A-8724-50B164	15-29-7050	A-8724-50A571	15-29-7150	A-8724-50B571	15-41-8050	A-8724-50A574	15-41-8150	A-8724-50B574	15-41-9150	A-8724-50G164
52	15-42-7052	A-8724-52A164	15-42-7152	A-8724-52B164	15-29-7052	A-8724-52A571	15-29-7152	A-8724-52B571	15-41-8052	A-8724-52A574	15-41-8152	A-8724-52B574	15-41-9152	A-8724-52G164
54	15-42-7054	A-8724-54A164	15-42-7154	A-8724-54B164	15-29-7054	A-8724-54A571	15-29-7154	A-8724-54B571	15-41-8054	A-8724-54A574	15-41-8154	A-8724-54B574	15-41-9154	A-8724-54G164
56	15-42-7056	A-8724-56A164	15-42-7156	A-8724-56B164	15-29-7056	A-8724-56A571	15-29-7156	A-8724-56B571	15-41-8056	A-8724-56A574	15-41-8156	A-8724-56B574	15-41-9156	A-8724-56G164
58	15-42-7058	A-8724-58A164	15-42-7158	A-8724-58B164	15-29-7058	A-8724-58A571	15-29-7158	A-8724-58B571	15-41-8058	A-8724-58A574	15-41-8158	A-8724-58B574	15-41-9158	A-8724-58G164
60	15-42-7060	A-8724-60A164	15-42-7160	A-8724-60B164	15-29-7060	A-8724-60A571	15-29-7160	A-8724-60B571	15-41-8060	A-8724-60A574	15-41-8160	A-8724-60B574	15-41-9160	A-8724-60G164
62	15-42-7062	A-8724-62A164	15-42-7162	A-8724-62B164	15-29-7062	A-8724-62A571	15-29-7162	A-8724-62B571	15-41-8062	A-8724-62A574	15-41-8162	A-8724-62B574	15-41-9162	A-8724-62G164
64	15-42-7064	A-8724-64A164	15-42-7164	A-8724-64B164	15-29-7064	A-8724-64A571	15-29-7164	A-8724-64B571	15-41-8064	A-8724-64A574	15-41-8164	A-8724-64B574	15-41-9164	A-8724-64G164
66	15-42-7066	A-8724-66A164	15-42-7166	A-8724-66B164	15-29-7066	A-8724-66A571	15-29-7166	A-8724-66B571	15-41-8066	A-8724-66A574	15-41-8166	A-8724-66B574	15-41-9166	A-8724-66G164
68	15-42-7068	A-8724-68A164	15-42-7168	A-8724-68B164	15-29-7068	A-8724-68A571	15-29-7168	A-8724-68B571	15-41-8068	A-8724-68A574	15-41-8168	A-8724-68B574	15-41-9168	A-8724-68G164
70	15-42-7070	A-8724-70A164	15-42-7170	A-8724-70B164	15-29-7070	A-8724-70A571	15-29-7170	A-8724-70B571	15-41-8070	A-8724-70A574	15-41-8170	A-8724-70B574	15-41-9170	A-8724-70G164
72	15-42-7072	A-8724-72A164	15-42-7172	A-8724-72B164	15-29-7072	A-8724-72A571	15-29-7172	A-8724-72B571	15-41-8072	A-8724-72A574	15-41-8172	A-8724-72B574	15-41-9172	A-8724-72G164

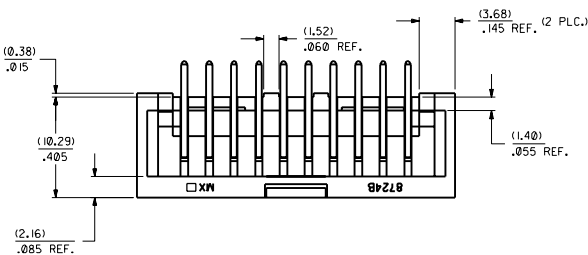
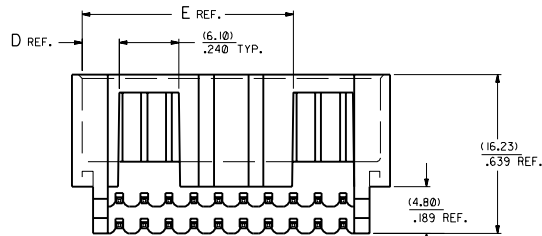
Q	SEE SHEET 1	DIMENSIONS SHOWN IN METRIC INCH	REVISIONS ONLY ON CAD SYSTEM
O	SEE SHEET 1	SHEET CHANGE SPECIFIED TO PREVIOUS SHEET IN LOT	SALES ASSEMBLY
M	SEE SHEET 1	UNIT: INCH / METRIC	WAFER-RIGHT ANGLE FULLY SHROUDED
L2	SEE SHEET 1	PLATE 1 2	.100 GRID-FOR USE W/ .025 SQ. PINS
L1	SEE SHEET 1	PLATE 2 2	WITH .060 END WALLS
L	SEE SHEET 1	PLATE 3 2	
K	SEE SHEET 1	DATE: 06/26/86	
J	SEE SHEET 1	DRAWN BY: J L	SCALE: 1:1
I	SEE SHEET 1	CHECKED BY: WAZ	APPROVED BY: RB
LTR.	REVISIONS	DATE: 06/26/86	MOLEX INCORPORATED



RECOMMENDED P.C. BOARD HOLE LAYOUT



SECTION J-J



NOTES:

- 1- 20 CIRCUIT SIZE SHOWN FOR ILLUSTRATION PURPOSES.
- 2- PIN PUSHOUT FORCE: (11.79 N) 1/4 LBS.
- 3- PINS MUST MEET SOLDERABILITY SPEC. MIL-STD-202 METHOD 208B.
- 4- ROW TO ROW PIN HEIGHT VARIATION MUST NOT EXCEED (0.13) / .005 IN.
- 5- FOR CHARTED DIMENSIONS AND ASSEMBLY NOS. NOT SHOWN ON THIS SHEET - SEE SHEET 4.
- 6- WINDOW NOT AVAILABLE ON 6 CIRCUIT.

CKT.	8724							
	DIM. 'A'	DIM. 'B'	DIM. 'C'	DIM. 'D'	DIM. 'E'	DIM. 'F'	DIM. 'G'	DIM. 'H'
06	(3.81) .150	(12.70) .500	(5.08) .200	(3.81) .150				(10.46) .412
08	(3.81) .150	(15.24) .600	(7.62) .300	(3.81) .150				(13.00) .512
10	(3.81) .150	(17.78) .700	(10.16) .400	(6.35) .250				(15.54) .612
12	(3.81) .150	(20.32) .800	(12.70) .500	(6.35) .250				(18.08) .712
14	(3.81) .150	(22.86) .900	(15.24) .600	(8.89) .350				(20.62) .812
16	(3.81) .150	(25.40) 1.000	(17.78) .900	(8.89) .350				(23.16) .912
18	(3.81) .150	(27.94) 1.100	(20.32) .800	(11.43) .450				(25.70) 1.012
20	(3.81) .150	(30.48) 1.200	(22.86) .900	(3.81) .150	(21.59) .850			(28.24) 1.112
22	(3.81) .150	(33.02) 1.300	(25.40) 1.000	(3.81) .150	(24.13) .950			(30.78) 1.212
24	(3.81) .150	(35.56) 1.400	(27.94) 1.100	(3.81) .150	(26.67) 1.050	(16.64) .655		(33.32) 1.312
26	(3.81) .150	(38.10) 1.500	(30.48) 1.200	(3.81) .150	(29.21) 1.150	(16.64) .655		(35.86) 1.412
28	(3.81) .150	(40.64) 1.600	(33.02) 1.300	(3.81) .150	(31.75) 1.250	(16.64) .655		(38.40) 1.512
30	(3.81) .150	(43.18) 1.700	(35.56) 1.400	(3.81) .150	(34.29) 1.350	(16.64) .655		(40.94) 1.612
32	(3.81) .150	(45.72) 1.800	(38.10) 1.500	(3.81) .150	(36.83) 1.450	(16.64) .655		(43.48) 1.712
34	(3.81) .150	(48.26) 1.900	(40.64) 1.600	(3.81) .150	(39.37) 1.550	(16.64) .655	(16.76) .660	(46.02) 1.812
36	(3.81) .150	(50.80) 2.000	(43.18) 1.700	(3.81) .150	(41.91) 1.650	(16.64) .655	(16.76) .660	(48.56) 1.912
38	(3.81) .150	(53.34) 2.100	(45.72) 1.800	(3.81) .150	(44.45) 1.750	(16.64) .655	(16.76) .660	(51.10) 2.012
40	(3.81) .150	(55.88) 2.200	(48.26) 1.900	(3.81) .150	(46.99) 1.850	(16.64) .655	(16.76) .660	(53.64) 2.112
42	(3.81) .150	(58.42) 2.300	(50.80) 2.000	(3.81) .150	(49.53) 1.950	(16.64) .655	(16.76) .660	(56.18) 2.212
44	(3.81) .150	(60.96) 2.400	(53.34) 2.100	(3.81) .150	(52.07) 2.050	(16.64) .655	(16.76) .660	(58.72) 2.312
46	(3.81) .150	(63.50) 2.500	(55.88) 2.200	(3.81) .150	(54.61) 2.150	(19.05) .750	(16.76) .660	(61.26) 2.412
48	(3.81) .150	(66.04) 2.600	(58.42) 2.300	(3.81) .150	(57.15) 2.250	(19.05) .750	(16.76) .660	(63.80) 2.512
50	(3.81) .150	(68.58) 2.700	(60.96) 2.400	(3.81) .150	(59.69) 2.350	(19.05) .750	(16.76) .660	(66.34) 2.612
52	(3.81) .150	(71.12) 2.800	(63.50) 2.500	(3.81) .150	(62.23) 2.450	(19.05) .750	(16.76) .660	(68.88) 2.712
54	(3.81) .150	(73.66) 2.900	(66.04) 2.600	(3.81) .150	(64.77) 2.550	(21.59) .850	(21.84) .860	(71.42) 2.812
56	(3.81) .150	(76.20) 3.000	(68.58) 2.700	(3.81) .150	(67.31) 2.650	(21.59) .850	(21.84) .860	(73.96) 2.912
58	(3.81) .150	(78.74) 3.100	(71.12) 2.800	(3.81) .150	(69.85) 2.750	(21.84) .860	(26.92) 1.060	(76.50) 3.012
60	(3.81) .150	(81.28) 3.200	(73.66) 2.900	(3.81) .150	(72.39) 2.850	(21.84) .860	(26.92) 1.060	(79.04) 3.112
62	(3.81) .150	(83.82) 3.300	(76.20) 3.000	(3.81) .150	(74.93) 2.950	(21.84) .860	(26.92) 1.060	(81.58) 3.212
64	(3.81) .150	(86.36) 3.400	(78.74) 3.100	(3.81) .150	(77.47) 3.050	(21.84) .860	(26.92) 1.060	(84.12) 3.312
66	(3.81) .150	(88.90) 3.500	(81.28) 3.200	(3.81) .150	(80.01) 3.150	(21.84) .860	(26.92) 1.060	(86.66) 3.412
68	(3.81) .150	(91.44) 3.600	(83.82) 3.300	(3.81) .150	(82.55) 3.250	(21.84) .860	(26.92) 1.060	(89.20) 3.512
70	(3.81) .150	(93.98) 3.700	(86.36) 3.400	(3.81) .150	(85.09) 3.350	(21.84) .860	(26.92) 1.060	(91.74) 3.612
72	(3.81) .150	(96.52) 3.800	(88.90) 3.500	(3.81) .150	(87.63) 3.450	(21.84) .860	(26.92) 1.060	(94.28) 3.712

MATERIAL:

SHROUDED WAFER: GLASS FILLED NYLON, COLOR: BLACK, UL94 V-0.  
 PINS: PHOSPHOR BRONZE, SEE SHEET 4 FOR FINISHES.

ASSEMBLY STYLES "C" & "D"

DIMENSIONS SHOWN METRIC INCH  
 TITLE: SALES ASSEMBLY  
 WAFER - RIGHT ANGLE FULLY SHROUDED  
 .100 GRID-FOR USE W/ .025 SQ. PINS  
 WITH .150 END WALLS  
 MOLEX INCORPORATED  
 SEE CHART SDA-8724-\*\*\*\*\*  
 SCALE: 4 : 1  
 REV. LTR. REVISIONS  
 REVISE ONLY ON CAD SYSTEM  
 DATE: 06/26/86  
 DA D

NO. OF CKTS	ENGINEERING PART NUMBER A-8724-		P REF.	PLATING (SEE NOTES ON THIS SHEET)	CONNECTOR END PLATING			P.C. BOARD END PLATING			PACKAGING INFORMATION PK-70873-
	RELEASE FOR MANUFACTURE	TYPE			J LENGTH	K MEAS.	TYPE	L LENGTH	M MEAS.		
	06C164 / 72C164	RFM	(3.30) .130	TIN-LEAD	TIN-LEAD		(2.54) .100	TIN-LEAD		(1.27) .050	0019
	06D164 / 72D164	RFM	(5.08) .200	TIN-LEAD	TIN-LEAD		(2.54) .100	TIN-LEAD		(1.27) .050	0019
	06C571 / 72C571	RFM	(3.30) .130	15 GOLD	GOLD		(2.54) .100	TIN-LEAD		(1.27) .050	0019
	06D571 / 72D571	RFM	(5.08) .200	15 GOLD	GOLD		(2.54) .100	TIN-LEAD		(1.27) .050	0019
	06C574 / 72C574	RFM	(3.30) .130	30 GOLD	GOLD		(2.54) .100	TIN-LEAD		(1.27) .050	0019
	06D574 / 72D574	RFM	(5.08) .200	30 GOLD	GOLD		(2.54) .100	TIN-LEAD		(1.27) .050	0019

PLATING FINISHES:

TIN-LEAD TIN-LEAD (Sn-Pb) ALLOY OVER ENTIRE PIN;  
THICKNESS=(3.75 MICROMETER)/75 MICROINCH MINIMUM;  
NICKEL (Ni) UNDERPLATE OVER ENTIRE PIN.

15 GOLD SELECTIVE GOLD (Au) IN THE CONTACT AREA;  
THICKNESS=(0.37 MICROMETER)/15 MICROINCH MINIMUM;  
SELECTIVE TIN-LEAD (Sn-Pb) ALLOY IN THE PC TAIL AREA;  
THICKNESS=(1.88 MICROMETER)/75 MICROINCH MINIMUM;  
NICKEL (Ni) UNDERPLATE OVER ENTIRE PIN.

30 GOLD SELECTIVE GOLD (Au) IN THE CONTACT AREA;  
THICKNESS=(0.75 MICROMETER)/30 MICROINCH MINIMUM;  
SELECTIVE TIN-LEAD (Sn-Pb) ALLOY IN THE PC TAIL AREA;  
THICKNESS=(1.88 MICROMETER)/75 MICROINCH MINIMUM;  
NICKEL (Ni) UNDERPLATE OVER ENTIRE PIN.

NO. OF CKTS	**C164		**D164		**C571		**D571		**C571		**D574									
	EDP NUMBER	ENG NUMBER	EDP NUMBER	ENG NUMBER	EDP NUMBER	ENG NUMBER	EDP NUMBER	ENG NUMBER	EDP NUMBER	ENG NUMBER	EDP NUMBER	ENG NUMBER	EDP NUMBER	ENG NUMBER	EDP NUMBER	ENG NUMBER	EDP NUMBER	ENG NUMBER	EDP NUMBER	ENG NUMBER
06	15-42-7206	A-8724-06C164	15-42-7306	A-8724-06D164	15-29-7206	A-8724-06C571	15-29-7306	A-8724-06D571	15-41-8206	A-8724-06C571	15-41-8306	A-8724-06D574								
08	15-42-7208	A-8724-08C164	15-42-7308	A-8724-08D164	15-29-7208	A-8724-08C571	15-29-7308	A-8724-08D571	15-41-8208	A-8724-08C571	15-41-8308	A-8724-08D574								
10	15-42-7210	A-8724-10C164	15-42-7310	A-8724-10D164	15-29-7210	A-8724-10C571	15-29-7310	A-8724-10D571	15-41-8210	A-8724-10C571	15-41-8310	A-8724-10D574								
12	15-42-7212	A-8724-12C164	15-42-7312	A-8724-12D164	15-29-7212	A-8724-12C571	15-29-7312	A-8724-12D571	15-41-8212	A-8724-12C571	15-41-8312	A-8724-12D574								
14	15-42-7214	A-8724-14C164	15-42-7314	A-8724-14D164	15-29-7214	A-8724-14C571	15-29-7314	A-8724-14D571	15-41-8214	A-8724-14C571	15-41-8314	A-8724-14D574								
16	15-42-7216	A-8724-16C164	15-42-7316	A-8724-16D164	15-29-7216	A-8724-16C571	15-29-7316	A-8724-16D571	15-41-8216	A-8724-16C571	15-41-8316	A-8724-16D574								
18	15-42-7218	A-8724-18C164	15-42-7318	A-8724-18D164	15-29-7218	A-8724-18C571	15-29-7318	A-8724-18D571	15-41-8218	A-8724-18C571	15-41-8318	A-8724-18D574								
20	15-42-7220	A-8724-20C164	15-42-7320	A-8724-20D164	15-29-7220	A-8724-20C571	15-29-7320	A-8724-20D571	15-41-8220	A-8724-20C571	15-41-8320	A-8724-20D574								
22	15-42-7222	A-8724-22C164	15-42-7322	A-8724-22D164	15-29-7222	A-8724-22C571	15-29-7322	A-8724-22D571	15-41-8222	A-8724-22C571	15-41-8322	A-8724-22D574								
24	15-42-7224	A-8724-24C164	15-42-7324	A-8724-24D164	15-29-7224	A-8724-24C571	15-29-7324	A-8724-24D571	15-41-8224	A-8724-24C571	15-41-8324	A-8724-24D574								
26	15-42-7226	A-8724-26C164	15-42-7326	A-8724-26D164	15-29-7226	A-8724-26C571	15-29-7326	A-8724-26D571	15-41-8226	A-8724-26C571	15-41-8326	A-8724-26D574								
28	15-42-7228	A-8724-28C164	15-42-7328	A-8724-28D164	15-29-7228	A-8724-28C571	15-29-7328	A-8724-28D571	15-41-8228	A-8724-28C571	15-41-8328	A-8724-28D574								
30	15-42-7230	A-8724-30C164	15-42-7330	A-8724-30D164	15-29-7230	A-8724-30C571	15-29-7330	A-8724-30D571	15-41-8230	A-8724-30C571	15-41-8330	A-8724-30D574								
32	15-42-7232	A-8724-32C164	15-42-7332	A-8724-32D164	15-29-7232	A-8724-32C571	15-29-7332	A-8724-32D571	15-41-8232	A-8724-32C571	15-41-8332	A-8724-32D574								
34	15-42-7234	A-8724-34C164	15-42-7334	A-8724-34D164	15-29-7234	A-8724-34C571	15-29-7334	A-8724-34D571	15-41-8234	A-8724-34C571	15-41-8334	A-8724-34D574								
36	15-42-7236	A-8724-36C164	15-42-7336	A-8724-36D164	15-29-7236	A-8724-36C571	15-29-7336	A-8724-36D571	15-41-8236	A-8724-36C571	15-41-8336	A-8724-36D574								
38	15-42-7238	A-8724-38C164	15-42-7338	A-8724-38D164	15-29-7238	A-8724-38C571	15-29-7338	A-8724-38D571	15-41-8238	A-8724-38C571	15-41-8338	A-8724-38D574								
40	15-42-7240	A-8724-40C164	15-42-7340	A-8724-40D164	15-29-7240	A-8724-40C571	15-29-7340	A-8724-40D571	15-41-8240	A-8724-40C571	15-41-8340	A-8724-40D574								
42	15-42-7242	A-8724-42C164	15-42-7342	A-8724-42D164	15-29-7242	A-8724-42C571	15-29-7342	A-8724-42D571	15-41-8242	A-8724-42C571	15-41-8342	A-8724-42D574								
44	15-42-7244	A-8724-44C164	15-42-7344	A-8724-44D164	15-29-7244	A-8724-44C571	15-29-7344	A-8724-44D571	15-41-8244	A-8724-44C571	15-41-8344	A-8724-44D574								
46	15-42-7246	A-8724-46C164	15-42-7346	A-8724-46D164	15-29-7246	A-8724-46C571	15-29-7346	A-8724-46D571	15-41-8246	A-8724-46C571	15-41-8346	A-8724-46D574								
48	15-42-7248	A-8724-48C164	15-42-7348	A-8724-48D164	15-29-7248	A-8724-48C571	15-29-7348	A-8724-48D571	15-41-8248	A-8724-48C571	15-41-8348	A-8724-48D574								
50	15-42-7250	A-8724-50C164	15-42-7350	A-8724-50D164	15-29-7250	A-8724-50C571	15-29-7350	A-8724-50D571	15-41-8250	A-8724-50C571	15-41-8350	A-8724-50D574								
52	15-42-7252	A-8724-52C164	15-42-7352	A-8724-52D164	15-29-7252	A-8724-52C571	15-29-7352	A-8724-52D571	15-41-8252	A-8724-52C571	15-41-8352	A-8724-52D574								
54	15-42-7254	A-8724-54C164	15-42-7354	A-8724-54D164	15-29-7254	A-8724-54C571	15-29-7354	A-8724-54D571	15-41-8254	A-8724-54C571	15-41-8354	A-8724-54D574								
56	15-42-7256	A-8724-56C164	15-42-7356	A-8724-56D164	15-29-7256	A-8724-56C571	15-29-7356	A-8724-56D571	15-41-8256	A-8724-56C571	15-41-8356	A-8724-56D574								
58	15-42-7258	A-8724-58C164	15-42-7358	A-8724-58D164	15-29-7258	A-8724-58C571	15-29-7358	A-8724-58D571	15-41-8258	A-8724-58C571	15-41-8358	A-8724-58D574								
60	15-42-7260	A-8724-60C164	15-42-7360	A-8724-60D164	15-29-7260	A-8724-60C571	15-29-7360	A-8724-60D571	15-41-8260	A-8724-60C571	15-41-8360	A-8724-60D574								
62	15-42-7262	A-8724-62C164	15-42-7362	A-8724-62D164	15-29-7262	A-8724-62C571	15-29-7362	A-8724-62D571	15-41-8262	A-8724-62C571	15-41-8362	A-8724-62D574								
64	15-42-7264	A-8724-64C164	15-42-7364	A-8724-64D164	15-29-7264	A-8724-64C571	15-29-7364	A-8724-64D571	15-41-8264	A-8724-64C571	15-41-8364	A-8724-64D574								
66	15-42-7266	A-8724-66C164	15-42-7366	A-8724-66D164	15-29-7266	A-8724-66C571	15-29-7366	A-8724-66D571	15-41-8266	A-8724-66C571	15-41-8366	A-8724-66D574								
68	15-42-7268	A-8724-68C164	15-42-7368	A-8724-68D164	15-29-7268	A-8724-68C571	15-29-7368	A-8724-68D571	15-41-8268	A-8724-68C571	15-41-8368	A-8724-68D574								
70	15-42-7270	A-8724-70C164	15-42-7370	A-8724-70D164	15-29-7270	A-8724-70C571	15-29-7370	A-8724-70D571	15-41-8270	A-8724-70C571	15-41-8370	A-8724-70D574								
72	15-42-7272	A-8724-72C164	15-42-7372	A-8724-72D164	15-29-7272	A-8724-72C571	15-29-7372	A-8724-72D571	15-41-8272	A-8724-72C571	15-41-8372	A-8724-72D574								

DIMENSIONS SHOWN UNLESS OTHERWISE SPECIFIED		SALES ASSEMBLY													
UNLESS OTHERWISE SPECIFIED TO OTHERWISE INDICATED		WAFER-RIGHT ANGLE FULLY SHROUDED													
		.100 GRID-FOR USE W/.025 SQ. PINS													
		WITH .150 END WALLS													
<table border="1"> <tr><td>PLATE 1</td><td>2</td></tr> <tr><td>PLATE 2</td><td>2</td></tr> <tr><td>PLATE 3</td><td>2</td></tr> </table>		PLATE 1	2	PLATE 2	2	PLATE 3	2	<table border="1"> <tr><td>DATE</td><td>06/26/86</td></tr> <tr><td>DRG. NO.</td><td>4</td></tr> <tr><td>REV. NO.</td><td>0002</td></tr> </table>		DATE	06/26/86	DRG. NO.	4	REV. NO.	0002
PLATE 1	2														
PLATE 2	2														
PLATE 3	2														
DATE	06/26/86														
DRG. NO.	4														
REV. NO.	0002														
MOLEX INCORPORATED		SEE CHART SDA-8724-*****													
<table border="1"> <tr><td>DRG. NO.</td><td>J L</td></tr> <tr><td>SCALE</td><td>1:1</td></tr> <tr><td>DATE</td><td>WAZ</td></tr> </table>		DRG. NO.	J L	SCALE	1:1	DATE	WAZ	<table border="1"> <tr><td>DRG. NO.</td><td>RB</td></tr> <tr><td>SCALE</td><td>1:1</td></tr> <tr><td>DATE</td><td>WAZ</td></tr> </table>		DRG. NO.	RB	SCALE	1:1	DATE	WAZ
DRG. NO.	J L														
SCALE	1:1														
DATE	WAZ														
DRG. NO.	RB														
SCALE	1:1														
DATE	WAZ														
LTR. REVISIONS		LTR. REVISIONS													