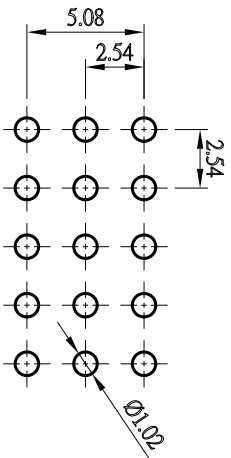


Z=	Code:	(B)	(C)
0	3959803CXX4Y0	6.0	3.0
1	3959803CXX4Y1	7.0	3.0
2	3959803CXX4Y2	8.0	3.0
3	3959803CXX4Y3	9.0	3.0
4	3959803CXX4Y4	10.0	3.0
5	3959803CXX4Y5	11.0	3.0



Recommended PCB Layout  
(PCB TOLERANCE ±0.05)

A	02-09-04	UPDATING	
INDEX	DATE		
Material	Pin: copper alloy		MODIFICATION
Platings	Y= 0: GOLD PLATED 0.25µm	Y= 1: GOLD FLASH	Y= 4: TIN PLATED
Protection	XX= N: Number of contacts per row (02=50)	Z= see plan	Insulator: P.B.T.
	Y= 6: SELECTIVE GOLD FLASH	Y= 7: SELECTIVE GOLD 0.25µm	



Denomination  
**PIN HEADER 2.54mm RIGHT ANGLE TYPE**

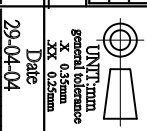
Cod. **3959803CXX4YZ**

File: 3959803CXX4YZ

Dis. Nr. \_\_\_\_\_

\_\_\_\_\_

Design  
Pandisica M.  
Contr.  
Chiappini R.



Date  
29-04-04