

Ordering Information:

2006 P $\frac{**}{1}$ $\frac{*}{2}$ L $\frac{**}{3}$

Material :

Insulator : UL 94V-0 PBT

Contact : Brass

1. No. of circuits available in 2 through 40 circuits

2. Plating:

F=Selective gold flash over 30~50μ" nickel overall

J=15μ" gold plated selective over 30~50μ" nickel overall

K=30μ" gold plated selective over 30~50μ" nickel overall

T=Tin plated 120μ" min. over 30~50μ" nickel overall

U=Gold flash over 30~50μ" nickel overall

W=15μ" gold over 30~50μ" nickel overall

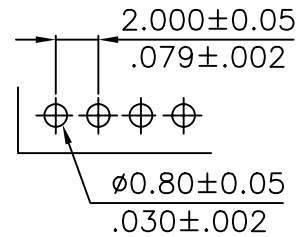
Z=30μ" gold over 30~50μ" nickel overall

G=50μ" gold over 30~50μ" nickel overall

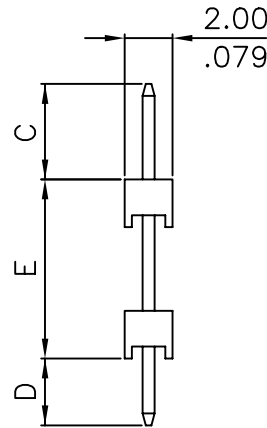
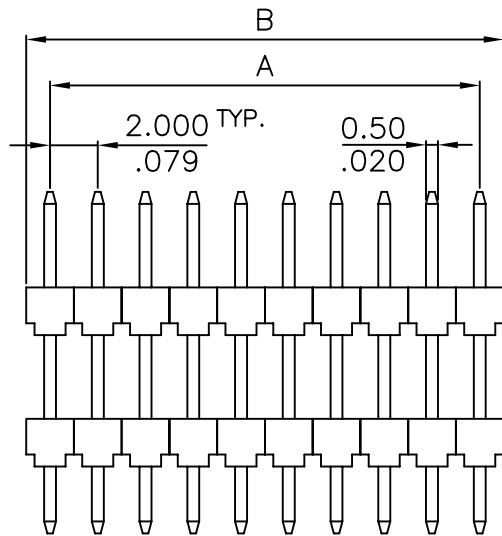
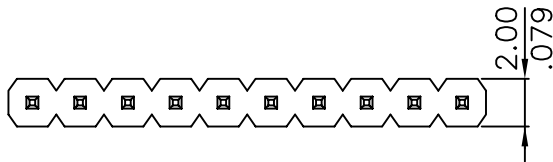
3. Special options:

Pin Length = Dim.C + Dim.D + Dim.E

(See Next Page)



Recommended Hole Pattern



A = 2.00mm(.079") * No. of Spaces

B = A + 2.00mm(.079")

 臺灣龍傑股份有限公司
LEOCO CORPORATION

GENERAL TOLERANCE

.X	± 0.30 .012	.X°	± 1°
.XX	± 0.20 .008	.XX°	± 0.5°
.XXX	± 0.10 .004	.XXX°	± 0.1°

APPROVED BY:

PART NO.:

2006P***L**

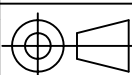
CHECKED BY:

TITLE: 2.00mm(.079")
Single Row Breakaway Header

DRAW BY:

DRAWING NO.:

200601S



UNITS
mm/inch

SCALE	SIZE	SHEET	REV.
3:1	A4	1/2	H

REV.	ECO. NO.	CHG	APPD.
H	E000221		
G	E970363		
F	E970211		

No.	Part No.	Pin Part No.	Dim.C	Dim.D	Dim.E
1	2006P***L02	*SP05002000	3.00(.118)	2.80(.110)	14.20(.560)
2	2006P**0L03	*SP05002600	3.00(.118)	3.00(.118)	20.00(.787)
3	2006P**0L04	*SP05001680	4.00(.157)	2.80(.110)	10.00(.394)
4	2006P**0L05	*SP05001270	2.60(.102)	2.60(.102)	7.50(.295)
5	2006P**0L06	*SP05001263	3.71(.146)	3.00(.118)	5.92(.233)
6	2006P***L07	*SP05001360	4.00(.157)	2.60(.102)	7.00(.276)
7	2006P***L08	*SP05001100	4.00(.157)	3.00(.118)	4.00(.157)
8	2006P***L09	*SP05002260	2.80(.110)	2.80(.110)	17.00(.669)
9	2006P***L10	*SP05001309	4.00(.157)	3.19(.126)	5.90(.232)
10	2006P***L11	*SP05002380	4.00(.157)	2.80(.110)	17.00(.669)
11	2006P***L12	*SP05001830	4.00(.157)	2.80(.110)	11.50(.453)
12	2006P***L13	*SP05001710	5.50(.217)	2.60(.102)	9.00(.354)
13	2006P***L14	*SP05001060	4.00(.157)	2.60(.102)	4.00(.157)
14	2006P***L15	*SP05001000	2.50(.098)	2.50(.098)	5.00(.197)
15	2006P***L16	*SP05001100	2.50(.098)	2.50(.098)	6.00(.236)
16					
17					
18					
19					
20					
21					
22					
23					
24					
25					
26					
27					
28					
29					
30					
31					
32					
33					
34					

 臺灣龍傑股份有限公司
LECO CORPORATION

APPROVED BY:

PART NO.:
2006P***L**

GENERAL TOLERANCE

CHECKED BY:

TITLE: 2.00mm(.079")
Single Row Breakaway
Header

H E000221

G E970363

F E970211

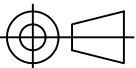
.X ± 0.30 / .012 .X° ± 1°

.XX ± 0.20 / .008 .XX° ± 0.5°

.XXX ± 0.10 / .004 .XXX° ± 0.1°

DRAW BY:

DRAWING NO.:
200601S



UNITS
mm/inch

SCALE	SIZE	SHEET	REV.
3:1	A4	2/2	H

REV.	ECO. NO.	CHG	APPD.